

# MAR 20140002: OXBOW

Oxbow-A report on Gold exploration near the North Saskatchewan River, Edmonton Alberta.

Received date: Feb 27, 2014

Public release date: Feb 23, 2015

## **DISCLAIMER**

By accessing and using the Alberta Energy website to download or otherwise obtain a scanned mineral assessment report, you ("User") agree to be bound by the following terms and conditions:

- a) Each scanned mineral assessment report that is downloaded or otherwise obtained from Alberta Energy is provided "AS IS", with no warranties or representations of any kind whatsoever from Her Majesty the Queen in Right of Alberta, as represented by the Minister of Energy ("Minister"), expressed or implied, including, but not limited to, no warranties or other representations from the Minister, regarding the content, accuracy, reliability, use or results from the use of or the integrity, completeness, quality or legibility of each such scanned mineral assessment report;
- b) To the fullest extent permitted by applicable laws, the Minister hereby expressly disclaims, and is released from, liability and responsibility for all warranties and conditions, expressed or implied, in relation to each scanned mineral assessment report shown or displayed on the Alberta Energy website including but not limited to warranties as to the satisfactory quality of or the fitness of the scanned mineral assessment report for a particular purpose and warranties as to the non-infringement or other non-violation of the proprietary rights held by any third party in respect of the scanned mineral assessment report;
- c) To the fullest extent permitted by applicable law, the Minister, and the Minister's employees and agents, exclude and disclaim liability to the User for losses and damages of whatever nature and howsoever arising including, without limitation, any direct, indirect, special, consequential, punitive or incidental damages, loss of use, loss of data, loss caused by a virus, loss of income or profit, claims of third parties, even if Alberta Energy have been advised of the possibility of such damages or losses, arising out of or in connection with the use of the Alberta Energy website, including the accessing or downloading of the scanned mineral assessment report and the use for any purpose of the scanned mineral assessment report so downloaded or retrieved.
- d) User agrees to indemnify and hold harmless the Minister, and the Minister's employees and agents against and from any and all third party claims, losses, liabilities, demands, actions or proceedings related to the downloading, distribution, transmissions, storage, redistribution, reproduction or exploitation of each scanned mineral assessment report obtained by the User from Alberta Energy.

FEB 27 2014

Assessment Report No. 20140002

## **PART B**

(Technical Report)

### **ASSESSMENT REPORT**

Metallic and Industrial Mineral Permit Number  
9306020543

Project Name : Oxbow

SE 12-54-23-W4

For

ELDON GALLOWAY

Submitted by

ELDON GALLOWAY

January 1, 2014

Confidentiality Report End Date:  
**February 21<sup>st</sup>, 2015**

**General Files CSMAR-MAR20140002**  
Metallic & Industrial Minerals Assessment  
Report – **Oxbow**  
Submitted by: Eldon Galloway



## Table of Contents

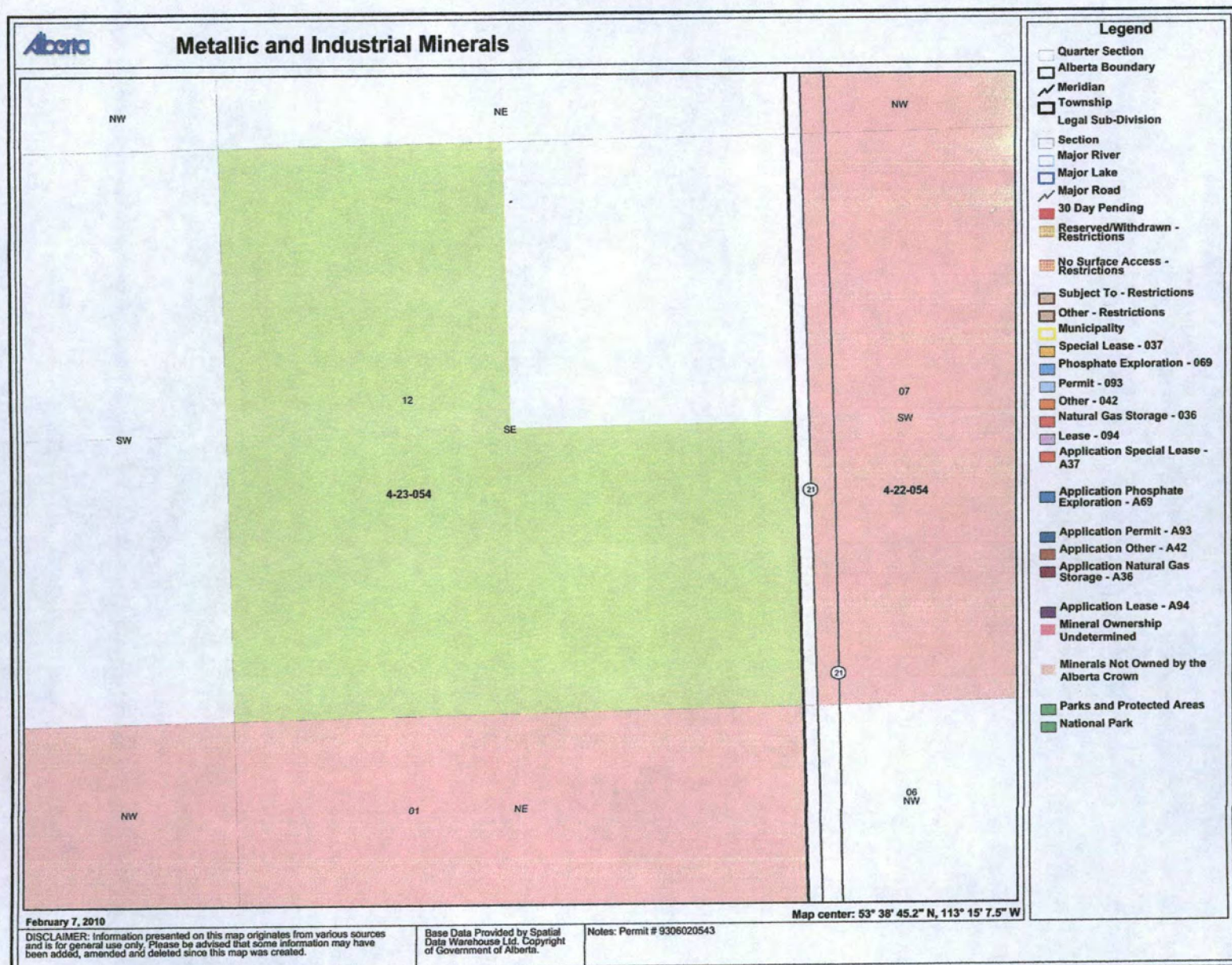
<b>PART B - TECHNICAL REPORT</b>	<b>Page</b>
Map of Current Permit and Boundaries.....	3
Map of Current Permit and Boundaries (A).....	4
Summary.....	5
Introduction.....	5
Regional Geology.....	5
Exploration.....	5
Conclusion.....	6
Detail of Expenditures.....	6
Summary of Expenditures.....	6
Qualifications.....	7
Sample Location Map.....	8
Sample Logs.....	9



# Map of Current Permit and Boundaries

Permit No. 9306020543

4-23-054: 12L1,L2,L7



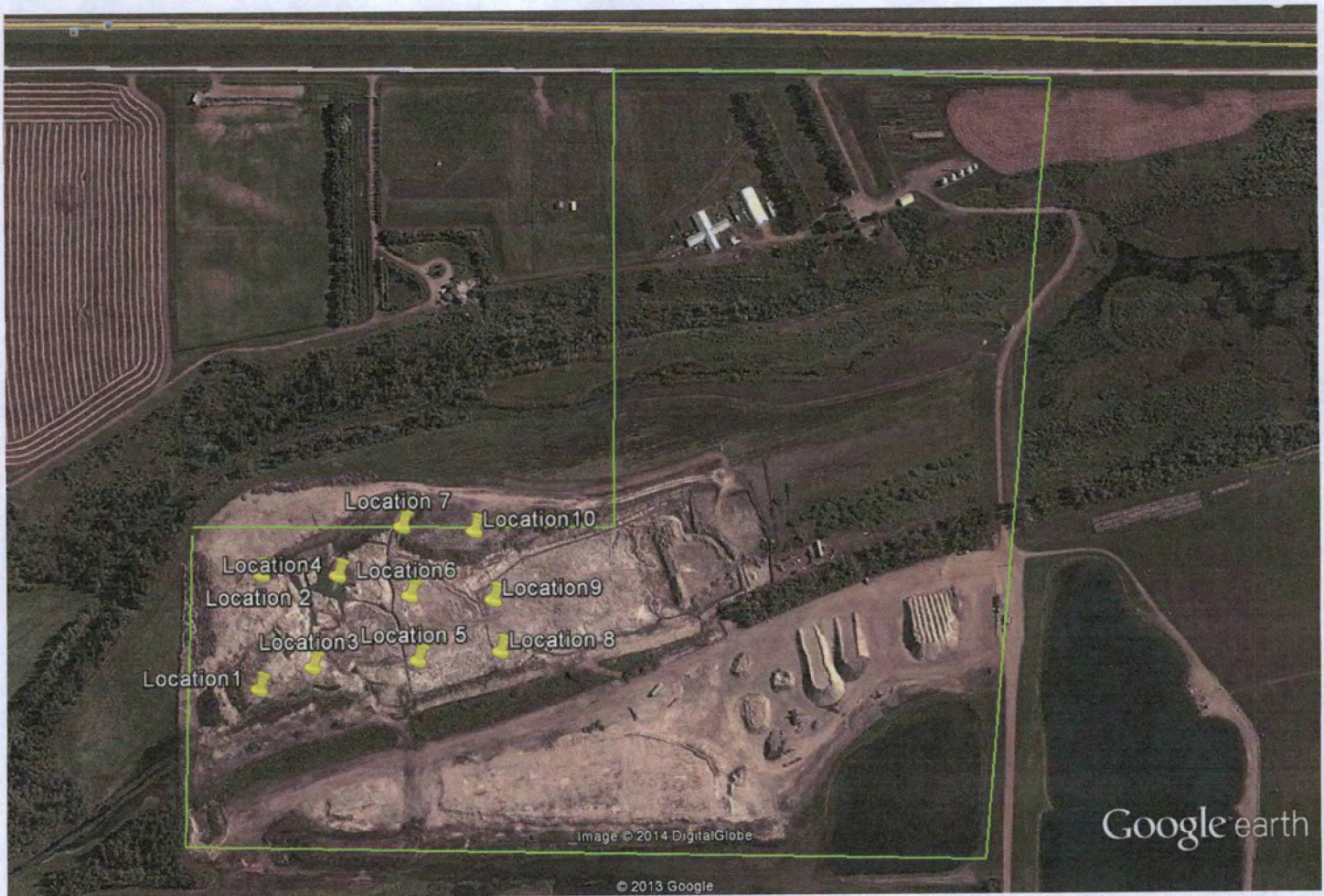
SE 12-54-23-W4, Part B

Eldon Galloway

January 1, 2014

Page 3 of 9





Google earth

feet 2000  
meters 600



## Map of Current Permit and Boundaries (A)

Permit No. 9306020543

4-23-054: 12L1,L2,L7

SE 12-54-23-W4, Part B

Eldon Galloway

January 1, 2014

Page 4 of 9

**SUMMARY**



## **SUMMARY**

An aggregate operation began removal of overburden, sand and gravel in 2010 allowing for easier access of samples at various depths, from surface to bedrock. As extraction has progressed, Everlasting Treasures Ltd and the aggregate operator have been panning samples taken from stock piles, and at specific sites of the open face wall to try to establish higher concentrations of placer gold or economic feasibility of washing product for mineral removal.

Sample hole locations are indicated on the accompanying map, PART B, Page 8. Sample logs can be found on PART B, Page 9. Aggregate sources have indicated some mineral deposits, by way of panning.

## **INTRODUCTION**

The aggregate operator, River Rock Sand and Gravel, has removed about one half of salable material from this site. After establishing that there was a quantity of gold present, through panning, we have been discussing the viability, economics, and logistics of incorporating a wash plant into the operation, with a sluice operator and the pit operator. Mineral extraction could increase return on each tonne of washed aggregate, and also increase the total amount of economically viable aggregate.

## **REGIONAL GEOLOGY**

The North Saskatchewan River oxbow, in which this property lies on the east edge of, has had a great deal of sand and gravel excavated from it over the last 50 years. To our knowledge, mineral extraction from the aggregate has not occurred, however historical working of the North Saskatchewan would indicate that gold may be present in the oxbow. Drill holes suggest there is approximately 16 hectare of sand and gravel aggregate on the exploration site running parallel to the oxbow bank. This is where we are concentrating our testing. The water table is within 2 feet of the surface.

## **EXPLORATION**

Geography, historical mining in the area, and drill hole testing suggested an economical gravel operation may be feasible. To further the study, a backhoe was brought in to substantiate initial tests as indicated in our 2010 report. Holes were dug to the maximum reach of the hoe, or to the hardpan. Samples from various depths of the hole were taken and analyzed by panning samples for gold, and platinum content. Traces of gold/platinum were found in about 50% of the samples which led to the conclusion that further study was required.



With the commencement of the gravel operation in 2010, Everlasting Treasure Ltd. was hired to acquire, pan, analyze and report on samples taken from various locations within the pit as dated on the logs, Page 9. The pit operator, River Rock Sand and Gravel duplicates our efforts and from aggregate stockpiles, as well. We have been attempting to find areas of higher concentration of gold, with consultation with the operator, but no trends have clearly developed. Mapping and Sample Logs are attached on Pages 8 and 9 of this report.

A small sluice was set up by the gravel operator in an attempt to evaluate the recovery rates, however this proved unsatisfactory due to the fineness of the gold.

## CONCLUSION

The initial backhoe testing confirmed the aggregate resource and that some placer gold was present. If mineral extraction is viable, it could increase return on each tonne of washed aggregate, and also increase the total amount of economically viable aggregate that is removed.

Extrapolation of test results could indicate viability of washing some of the aggregate if the process is incorporated into the operation. Wash plant operator cost/ return, pit operator cost/ return, washed rock marketability, and recovery are all part of the feasibility study being undertaken. Attempts at washing with a small sluice had its challenges, due to the fineness of the gold. Recovery rates were less than ideal due to the fact that the flour gold seemed to float through the sluice. We have had no clear trends of increased concentrations to date, but will continue to monitor.

## Detailed Expenditure Statement

Category	Description	Total Cost
Subcontracting Services		
Geological Contractor	Meet and coordinate activities with Gravel Operator Gather Samples, Log Location, Analyze samples, Report.	\$1700
GRAND TOTAL		\$1700

## Summary of Expenditures


\$1700 has been spent on expenditures for exploration and assessment during this reporting period.



## AUTHOR QUALIFICATIONS

I, Eldon Galloway, residing at Fort Saskatchewan, Alberta, Canada, do hereby certify that:

1. I am an independent prospector.
2. I have only become a recreational prospector in Alberta since 2006, and have very limited practical experience.
3. I am not aware of any material fact or material change with respect to the subject matter of the Report that is not reflected in the Report, or the omission to disclose which makes the Report misleading.



Eldon Galloway

Fort Saskatchewan Alberta, Canada

Jan 30<sup>'14</sup>  
Date





Google earth

feet  
meters

2000  
600



## **SAMPLE LOCATION MAP**

### **SE-12-54-23-W4**

SE 12-54-23-W4, Part B  
Eldon Galloway  
January 1, 2010  
Page 8 of 9



# Oxbow Sample Logs

Date	Sample Number	Location Reference #	Geographical Coordinates	Overburden Depth m	Aggregate Depth m	Sample Depth m	Sample Size	Analysis		
								No. Colors	Extrapolation col/T	gm/T (1)
06-03-2011	1	1	53° 38' 58.65" N 113° 15' 21.02" W	0-3.0	3.0-5.1	3	4kg+/-	0	0	0
06-03-2011	2		53° 38' 58.65" N 113° 15' 21.02" W			4		0	0	0
06-03-2011	3		53° 38' 58.65" N 113° 15' 21.02" W			5.1		2	500	0.3888025
08-06-2011	4	2	53° 38' 58.64" N 113° 15' 14.96" W	0-3.8	3.8-5	3.8		0	0	0
08-06-2011	5		53° 38' 58.64" N 113° 15' 14.96" W			4.4		1	250	0.1944012
08-06-2011	6		53° 38' 58.64" N 113° 15' 14.96" W			5		1	250	0.1944012
08-06-2011	7	3	53° 38' 56.97" N 113° 15' 19.85" W	0-2.8	2.8-5.5	2.8		2	500	0.3888025
08-06-2011	8		53° 38' 56.97" N 113° 15' 19.85" W			4		3	750	0.5832037
08-06-2011	9		53° 38' 56.97" N 113° 15' 19.85" W			5.5		2	500	0.3888025
10/15/11	10	4	53° 38' 56.21" N 113° 15' 14.98" W	0-4.2	4.2-5.1	4.2		0	0	0
10/15/11	11		53° 38' 56.21" N 113° 15' 14.98" W			4.7		0	0	0
10/15/11	12		53° 38' 56.21" N 113° 15' 14.98" W			5.1		1	250	0.1944012
06/17/12	13	5	53° 38' 53.65" N 113° 15' 19.45" W	0-2.1	2.1-5.4	2.1		1	250	0.1944012
06/17/12	14		53° 38' 53.65" N 113° 15' 19.45" W			3.8		2	500	0.3888025
06/17/12	15		53° 38' 53.65" N 113° 15' 19.45" W			5.4		2	500	0.3888025
06/17/12	16	6	53° 38' 53.92" N 113° 15' 16.02" W	0-2.1	2.1-4.2	2.1		0	0	0
06/17/12	17		53° 38' 53.92" N 113° 15' 16.02" W			3.1		1	250	0.1944012
06/17/12	18		53° 38' 53.92" N 113° 15' 16.02" W			4.2		2	500	0.3888025
10/23/12	19	7	53° 38' 54.20" N 113° 15' 12.35" W	0-4.2	4.2-4.9	4.2		1	250	0.1944012
10/23/12	20		53° 38' 54.20" N 113° 15' 12.35" W			4.9		1	250	0.1944012
05/27/13	21	8	53° 38' 51.04" N 113° 15' 18.95" W	0-1.4	1.4-4.1	1.4		2	500	0.3888025
05/27/13	22		53° 38' 51.04" N 113° 15' 18.95" W					3	750	0.5832037
05/27/13	23		53° 38' 51.04" N 113° 15' 18.95" W			4.1		2	500	0.3888025
05/27/13	24	9	53° 38' 51.28" N 113° 15' 16.19" W	0-2.2	2.2-4.6	2.2		1	250	0.1944012
05/27/13	25		53° 38' 51.28" N 113° 15' 16.19" W					0	0	0
05/27/13	26		53° 38' 51.28" N 113° 15' 16.19" W			4.6		2	500	0.3888025
05/27/13	27	10	53° 38' 51.91" N 113° 15' 12.56" W	0-4.1	4.1-4.7	4.1		0	0	0
05/27/13	28		53° 38' 51.91" N 113° 15' 12.56" W			4.7		0	0	0

Note 1 based on 1286 colors / gm

SE 12-54-23-W4, Part B

Eldon Galloway

01-Jan-14

Page 9 of 9