

MAR 20040002: LUNDBRECK SANDSTONE

Received date: Apr 19, 2004

Public release date: Apr 22, 2005

DISCLAIMER

By accessing and using the Alberta Energy website to download or otherwise obtain a scanned mineral assessment report, you ("User") agree to be bound by the following terms and conditions:

- a) Each scanned mineral assessment report that is downloaded or otherwise obtained from Alberta Energy is provided "AS IS", with no warranties or representations of any kind whatsoever from Her Majesty the Queen in Right of Alberta, as represented by the Minister of Energy ("Minister"), expressed or implied, including, but not limited to, no warranties or other representations from the Minister, regarding the content, accuracy, reliability, use or results from the use of or the integrity, completeness, quality or legibility of each such scanned mineral assessment report;
- b) To the fullest extent permitted by applicable laws, the Minister hereby expressly disclaims, and is released from, liability and responsibility for all warranties and conditions, expressed or implied, in relation to each scanned mineral assessment report shown or displayed on the Alberta Energy website including but not limited to warranties as to the satisfactory quality of or the fitness of the scanned mineral assessment report for a particular purpose and warranties as to the non-infringement or other non-violation of the proprietary rights held by any third party in respect of the scanned mineral assessment report;
- c) To the fullest extent permitted by applicable law, the Minister, and the Minister's employees and agents, exclude and disclaim liability to the User for losses and damages of whatsoever nature and howsoever arising including, without limitation, any direct, indirect, special, consequential, punitive or incidental damages, loss of use, loss of data, loss caused by a virus, loss of income or profit, claims of third parties, even if Alberta Energy have been advised of the possibility of such damages or losses, arising out of or in connection with the use of the Alberta Energy website, including the accessing or downloading of the scanned mineral assessment report and the use for any purpose of the scanned mineral assessment report so downloaded or retrieved.
- d) User agrees to indemnify and hold harmless the Minister, and the Minister's employees and agents against and from any and all third party claims, losses, liabilities, demands, actions or proceedings related to the downloading, distribution, transmissions, storage, redistribution, reproduction or exploitation of each scanned mineral assessment report obtained by the User from Alberta Energy.

ASSESSMENT REPORT

Metallic and Industrial Minerals Permit No. 9302010075

LUNDBRECK SANDSTONE PROJECT

PAT DWYER CONSTRUCTION INC.

P.O. BOX 38

LUNDBRECK, AB T0K 1H0

June 23, 2004

Re-submitted with requested
modifications by: Pat Dwyer

TABLE OF CONTENTS

Statement of Expenses.....	3
Cancellations and Amendments.....	4
Allocation of Expenses.....	4
Summary Report of Activities.....	5
Authorization to Reproduce or Copy.....	6

Attached:
Permit Location Map

STATEMENT OF EXPENSES

Description	Costs (\$)	Total Cost (\$)
Salary and wages Supervision – 2 days @ 350 Report preparation – 2 days @ 150 Clerical – 1 day @ 120 Equipment operators – 1 day @ 150	700 300 120 150	1270
Equipment –rate includes fuel & moving Pickup truck – 2 days @ 120 Backhoe – 1 day @ 800	240 800	1040
Contract Services Lab tests	400	400
Office Charges, Fees, Admin., General Office overhead (5%)	135.50	135.50
Grand total		2845.50

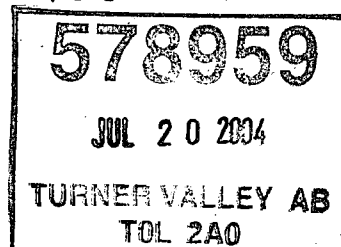
I certify that these expenditures are valid and were incurred in conducting assessment work on the above permit.

Signed: _____

for: Pat Dwyer Construction Inc.

Signature/Stamp
Commissioner for Oaths

B. Dwyer



CANCELLATIONS AND AMENDMENTS

PERMIT NO. 9302010075

Land retained:

1. In NE ¼ Section 21, Twp. 7, Rge. 2, W5 *820/9*
 - That portion of LSD 13 lying in the extreme NW corner of the ¼, bounded on the south by Highway 3A and on the north by the road allowance on the section line
 - All of LSD 2, SE28, T7, R2, W5.

Total retained 18.28 ha

The balance of the lands under this permit is to be returned to the Crown.

ALLOCATION OF EXPENSES

Permit No. 9302010075

Area: 4189 ha.

Expenditure required: \$20,945

Expenditure assigned: \$2845.50

Lands retained: 18.28 ha.

Expenditure required: \$91.40

Expenditure in excess: \$2754.10

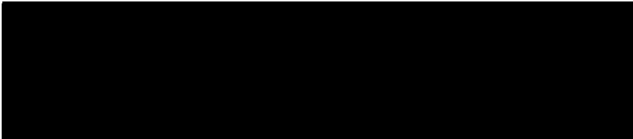
SUMMARY REPORT

Assessment work on Metallic and Industrial Minerals Permit No. 9302010075 for the initial two year period consisted of defining locations for extraction of suitable sandstone rock of various sizes primarily for landscaping. Road access into most of the area already existed.

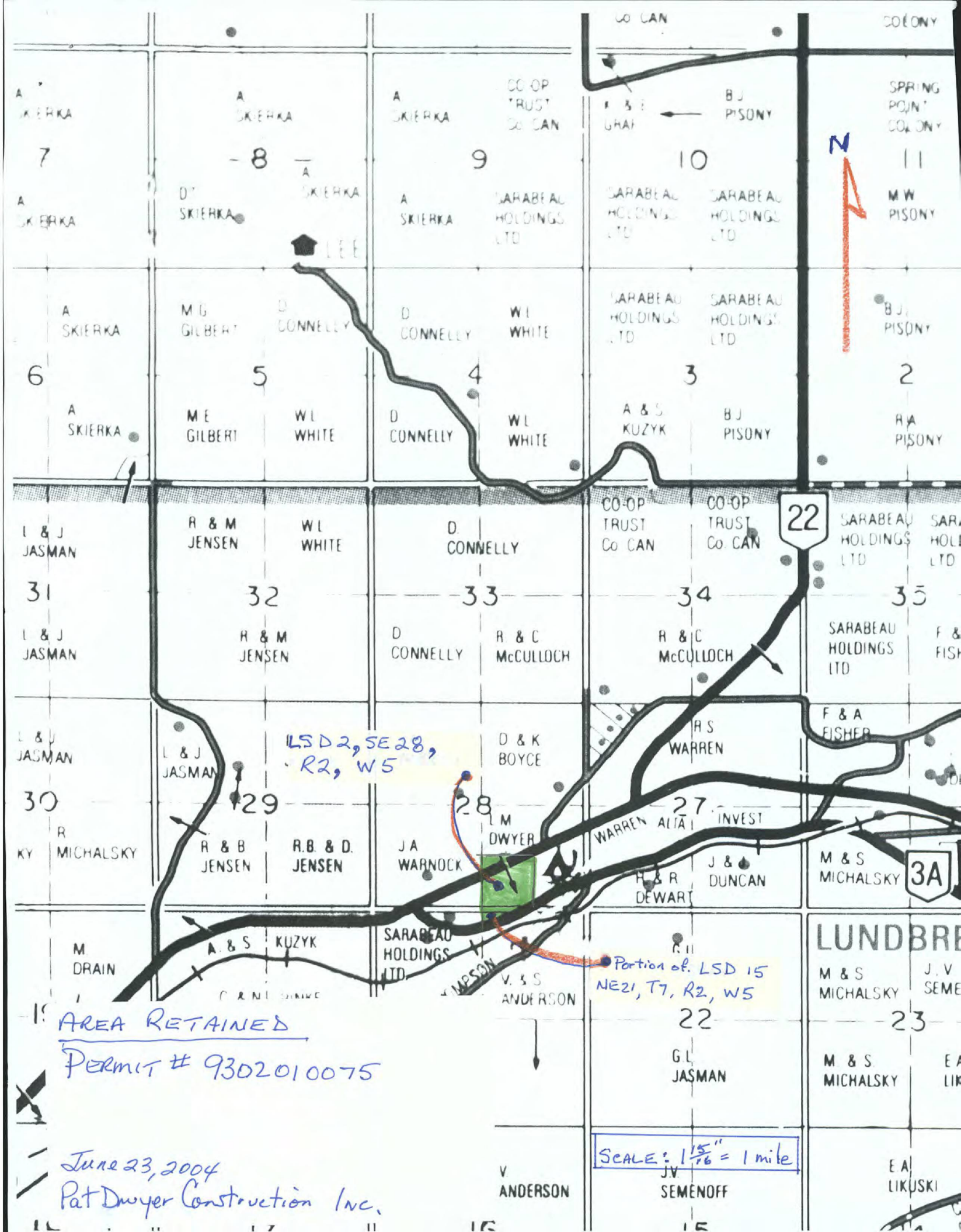
Total costs for initial assessment work during the two year period were \$2845.50, which exceeds the two year expenditure required for the 18.28 ha. retained by the amount of \$2754.10. It is our understanding that this excess amount will be credited against the minimum spending requirements for any subsequent two-year period, consistent with Sec. 14 (2) and 14 (3) of Alberta Regulation 66/93, Mines and Minerals Act, METALLIC AND INDUSTRIAL MINERALS REGULATION.

Authorization to Reproduce or Copy

Pat Dwyer Construction Inc. hereby authorizes the Government of Alberta to reproduce or copy the attached Assessment Report at the end of the one-year confidentiality period.



Pat Dwyer, President
Pat Dwyer Construction Inc.



Map grid labels (top section):
7: A SKIERKA
8: A SKIERKA, D SKIERKA, LEE (house icon)
9: A SKIERKA, SARABEAU HOLDINGS LTD
10: CO-OP TRUST Co CAN, BJ PISONY, SARABEAU HOLDINGS LTD
6: A SKIERKA, M G GILBERT, ME GILBERT, WL WHITE, D CONNELLY
5: M G GILBERT, WL WHITE, D CONNELLY
4: WL WHITE, D CONNELLY
3: WL WHITE, D CONNELLY, A & S KUZYK, BJ PISONY

Map grid labels (middle section):
31: L & J JASMAN
32: R & M JENSEN, WL WHITE, D CONNELLY
33: D CONNELLY, R & C McCULLOCH
34: CO-OP TRUST Co CAN, CO-OP TRUST Co CAN, R & C McCULLOCH
35: SARABEAU HOLDINGS LTD, SARABEAU HOLDINGS LTD, F & A FISHER
30: L & J JASMAN, R MICHALSKY, R & B JENSEN, R.B. & D. JENSEN, JA WARNOCK, L M DWYER (green box), WARREN ALIA INVEST, J & R DEWART, J & DUNCAN, M & S MICHALSKY (3A shield)

Map grid labels (bottom section):
1: M DRAIN, A & S KUZYK, SARABEAU HOLDINGS LTD, V & S ANDERSON, V ANDERSON
22: G L JASMAN
23: M & S MICHALSKY, M & S MICHALSKY, J.V. SEMENOFF, EA LIKUSKI

LSD 2, SE 28, R2, W5

Portion of LSD 15 NE 21, T7, R2, W5

AREA RETAINED
Permit # 9302010075

June 23, 2004
Pat Dwyer Construction Inc.

SCALE: 1 15/16" = 1 mile

608103

EBA Engineering Consultants Ltd.

Creating and Delivering Better Solutions

FACSIMILE COVER SHEET

442 - 10 Street, N., Lethbridge, Alberta T1H 2C7 CANADA

Telephone: (403) 329-9009 Facsimile: (403) 328-8817

Internet: lethbridge@eba.ca

Date: December 8, 2003 Time Sent: 8:20:10 AM

Attention: Mr. Pat Dwyer

Company: Three River Rentals Ltd.

Fax No.: 628-3781 2191 Telephone: _____

From: M. Sabourin File No.: 0404-4400496

Subject: OC Testing - Milk River Ridger Reservoir

MESSAGE:

TOTAL NUMBER OF PAGES (including this page): 3
Please circle as appropriate

Original to follow	YES/NO
By Mail/other	YES/NO

FAX 01v



EBA Engineering Consultants Ltd.

Creating and Delivering Better Solutions

December 5, 2003

Three River Rentals Ltd.
Box 38
Lundbreck AB T0K 1H0

EBA File: 0404-4400496

Attention: Mr. Pat Dwyer

Dear Sir:

**Subject: QC Testing – Milk River Ridge Reservoir
Rip-Rap Testing**

Pursuant to your request, EBA Engineering Consultants Ltd. (EBA) have completed the required testing for riprap samples delivered to our Calgary laboratory.

The material is composed of well-graded, well-cemented conglomerate. The pebbles are rounded to subrounded in dense sand-sized matrix. Lamination of matrix was not identified.

The quality of the riprap materials was tested in accordance with the California Division of Highways, test method No. 206 (Specific Gravity and Absorption of Coarse Aggregate – Procedure for Rock Slope Protection) and test method 229 (Method of Test for Durability Index).

The results are summarized below.

Test	Result	Specification
Apparent Specific Gravity	2.62/2.61	>2.6
Absorption (%)	1.67/1.69	<2
Durability Index	80	>51
Durability Absorption Ratio (DAR)	30	>23

- Two tests were conducted for specific gravity and absorption

These results satisfy the California Division of Highways quality control criteria and indicate that the rock is suitable for use as a riprap material.



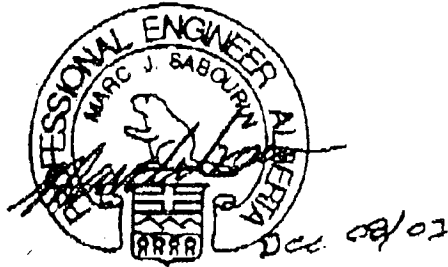
0404-4400496
Mr. P. Dwyer

- 2 -

December 5, 2003

We trust this information meets your present requirements. Should you have any questions, please contact our office.

Respectfully submitted,
EBA Engineering Consultants Ltd.



Bozena Czarnecki, P.Eng.
Senior Project Engineer

Marc Sabourin, P.Eng.
Project Director

BC:MJS:mnc

PERMIT TO PRACTICE EBA ENGINEERING CONSULTANTS LTD. Signature <u>Marc Sabourin</u> Date <u>Dec 08/03</u> PERMIT NUMBER: P245 The Association of Professional Engineers, Geologists and Geophysicists of Alberta
--

Respectfully yours

A solid black rectangular redaction box covering the signature of Don Townsend.

Don Townsend

For: Pat Dwyer Construction Inc.

Cc: Hazel Henson
Twyla Cyr
Ralph Jamieson