

MAR 19970002: LYNDO CREEK

Received date: Apr 01, 1997

Public release date: Apr 02, 1998

DISCLAIMER

By accessing and using the Alberta Energy website to download or otherwise obtain a scanned mineral assessment report, you ("User") agree to be bound by the following terms and conditions:

- a) Each scanned mineral assessment report that is downloaded or otherwise obtained from Alberta Energy is provided "AS IS", with no warranties or representations of any kind whatsoever from Her Majesty the Queen in Right of Alberta, as represented by the Minister of Energy ("Minister"), expressed or implied, including, but not limited to, no warranties or other representations from the Minister, regarding the content, accuracy, reliability, use or results from the use of or the integrity, completeness, quality or legibility of each such scanned mineral assessment report;
- b) To the fullest extent permitted by applicable laws, the Minister hereby expressly disclaims, and is released from, liability and responsibility for all warranties and conditions, expressed or implied, in relation to each scanned mineral assessment report shown or displayed on the Alberta Energy website including but not limited to warranties as to the satisfactory quality of or the fitness of the scanned mineral assessment report for a particular purpose and warranties as to the non-infringement or other non-violation of the proprietary rights held by any third party in respect of the scanned mineral assessment report;
- c) To the fullest extent permitted by applicable law, the Minister, and the Minister's employees and agents, exclude and disclaim liability to the User for losses and damages of whatsoever nature and howsoever arising including, without limitation, any direct, indirect, special, consequential, punitive or incidental damages, loss of use, loss of data, loss caused by a virus, loss of income or profit, claims of third parties, even if Alberta Energy have been advised of the possibility of such damages or losses, arising out of or in connection with the use of the Alberta Energy website, including the accessing or downloading of the scanned mineral assessment report and the use for any purpose of the scanned mineral assessment report so downloaded or retrieved.
- d) User agrees to indemnify and hold harmless the Minister, and the Minister's employees and agents against and from any and all third party claims, losses, liabilities, demands, actions or proceedings related to the downloading, distribution, transmissions, storage, redistribution, reproduction or exploitation of each scanned mineral assessment report obtained by the User from Alberta Energy.

FAX

19710002

Box 1585
Blairmore, AB T0K 0E0

Lyndo Creek

Date 03/25/97

Number of pages including cover sheet 6

To: ALTA ENERGY

ATTEN: Brian Hudson

RE: Permit # 9394090006

From: ARTHUR A. LYSTEN

Phone 403-427-7707

Fax Phone 427-0382

CC: _____

Phone 403-562-7182

Fax Phone 403-562-~~7182~~

REMARKS:

Urgent For your review Reply ASAP Please comment

Page 1: Rates and Expenses
Cost Outline

Page 2: Cost Outline Continued

Page 3: Land Description to be Retained
Tells where work was done
Affidavit RE: Preparing Report

Page 4: Explains ACCUMETER

Page 5: Map of Land to be retained

**PROSPECTING WORK DONE ON
METALLIC AND INDUSTRIAL MINERALS
PERMIT #9394090006 FROM SEPT. 14/94 TO SEPT.13/96**

Rates for Equipment, Labour, Transportation, Etc.

1. 3/4 Ton 4 X 4	\$ 40.00 / day
2. Suzuki Quad	30.00 / day
3. <i>Accumeter</i> Underground Surveyor	40.00 / day
4. Trailer to Haul Quad	10.00 / day
5. Foreman	18.00 / hour
6. Labourer	12.00 / hour
7. Board & Room per man	30.00 / hour
8. Transportation Rated at 20% of total cost	

SEPTEMBER 21/94 THROUGH SEPTEMBER 28/94

#'s 1,2,3 & 4	
\$ 120.00 / day @ eight days	\$ 960.00
One each of #'s 5 & 6	
@ \$ 30.00 / hour for eight hours: \$ 240.00 / day @ eight days	\$ 1920.00
#7 Board & Room for Two Men	
@ \$ 30.00/day: \$ 60.00 @ eight days	<u>\$ 480.00</u>
Sub Total	\$ 3360.00
#8 Transportation @ 20% of Total	<u>\$ 672.00</u>
Total	\$ 4032.00

OCTOBER 6/94 THROUGH OCTOBER 11/94

#'s 1,2,3 & 4	
@ \$ 120.00 /day for six days	\$ 720.00
# 5 & 6	
One of each @ \$ 30.00/hour for 8 hours/day for six days	\$ 1440.00
#7 for Two Men	
@ 30.00 each/day for six days	<u>\$ 360.00</u>
Sub Total	\$ 2520.00
#8 Transportation	
@ 20% of Total	<u>\$ 504.00</u>
Total	\$ 3024.00

JUNE 14/95 THROUGH JUNE 20/95

#'s 1,2, ³ & 4	
@ \$ 120.00/day for seven days	\$ 840.00
#'s 5 & 6	
One of each = \$ 30.00/hr., eight hrs/day = \$ 240.00 X seven days	1680.00
# 7 for Two Men	
@ \$ 30.00 each/day = seven days X \$ 60.00/hr.	<u>420.00</u>
Sub Total	\$ 2940.00
# 8 Transportation	
@ 20% of Total =	<u>588.00</u>
Total	\$ 3528.00

JULY 2/95 THROUGH JULY 12/95

#'s 1,2,&3 ⁴ ₁₁	
@ \$ 120.00/day X seven days =	\$ 1320.00
#'s 5 & 6 Two Labourers & One Foreman	
= \$ 42.00/hr X 8 hrs/day X 11 days	\$ 3,696.00
# 7 for Three Men	
@ \$ 30.00 each/day = \$ 90.00/day X 11 days	<u>\$ 990.00</u>
Sub Total	\$6006.00
# 8 Transportation	
@ 20% of Total =	<u>\$ 1201.20</u>
Grand Total	\$ 7207.20

AUGUST 4/96 THROUGH AUGUST 11/95

#'s 1,2,3 & 4	
= \$ 120.00/day X eight days	\$ 960.00
#'s 5 & 6 for One Foreman & Two Labourers	
= \$ 42.00/hr @ eight hrs/day X eight days =	\$ 2688.00
#7 for Three Men	
@ \$ 30.00 each /day for eight days =	<u>\$ 720.00</u>
Sub Total	\$ 4368.00
# 8 Transportation @ 20% of Total =	<u>\$ 873.60</u>
Total	\$ 5241.60

GRAND TOTAL**\$ 23032.80**

To Cover 17 and 3/4 sections of land which converts to:
 4586.19 hectares @ \$ 5.00/hectare = \$ 22930.96

Land Description to be retained on Permit # 9394090006

2 1/2 Sec.

TP. 12 R.2 W-5

Sec. 33 & 34 W1/2 35

8 1/4 Sec.

TP. 13 R.2 W-5

Sec. 4, 3 W1/2 2, 9, 10, W1/2 11, NE 11, W1/2 13, E1/2 24, 24 & 36

7 Sec.

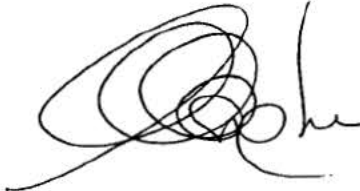
TP. 13 R.1 W-5

Sec. 27, 28, 29, 30, 31, S 1/2 32, S 1/2 33 & 34

⇒ We worked several locations in the permit area, but most of the work was done in the area to be retained as shown on the enclosed map. The circles and dots indicate where we had planned to drill, however we did not get the drilling done and did not take any samples.

I, Arthur Alvin Lyste of Box 1585 Blairmore, AB have prepared the assessment report, RE: Metallic & Industrial Minerals permit No. 9394090006 and attest to the veracity of the expenses incurred in conducting the assessment work.

signed ~~this~~ at the Town of Blairmore in the Province of Alberta this 25th day of March, 1997

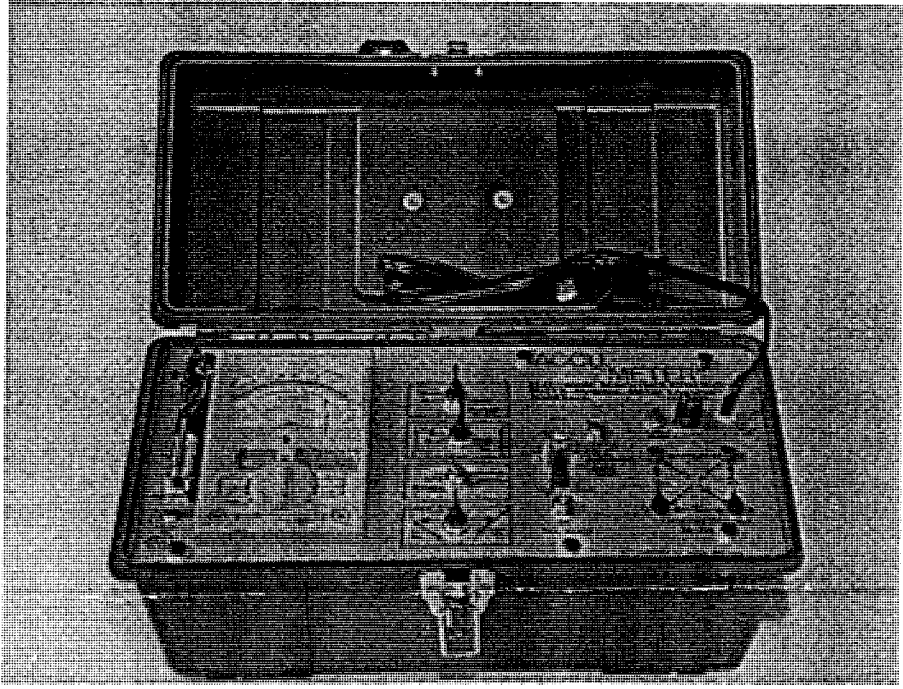
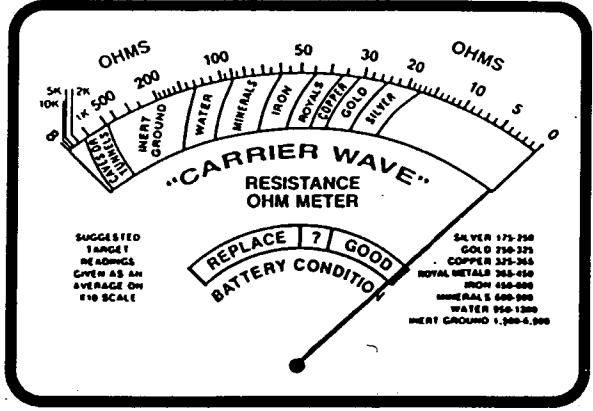
 COMM FOR OATHS Exp Aug 31 1998
 ALAN MARTINI

ACCU-METER®

UNDERGROUND GEO/SURVEYOR

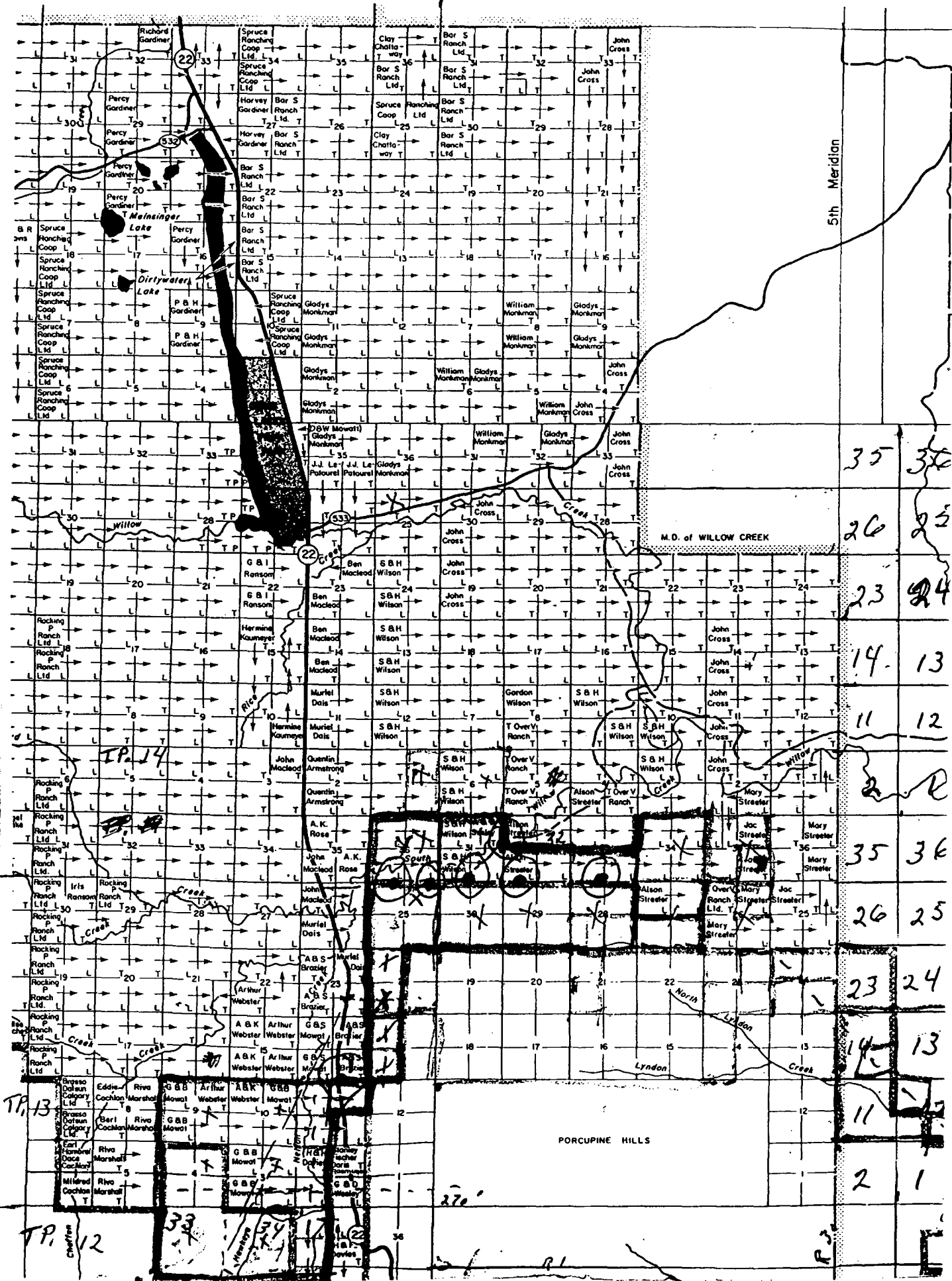
ACCURATELY LOCATES...

- GOLD
 - SILVER
 - COPPER
 - ROYAL METALS
 - IRON
 - MINERALS
- BURIED TREASURE
 - PLACER DEPOSITS
 - ORE BODIES
 - TUNNELS & CAVES
 - SUBSURFACE WATER
 - THE "MOTHER LODE"



NOW WHAT IT IS ... WHERE IT IS... AND HOW DEEP IT IS!

- 10,000 SQUARE FOOT SEARCH AREA!**
- DETERMINES DEPTH DOWN TO 100 FEET!**
- ACCURATE AND SCIENTIFIC - NO GUESSWORK!**
- METER & LIGHT INDICATORS**
- EASY TO USE - COMPACT AND LIGHT WEIGHT!**
- PROFESSIONAL EQUIPMENT FOR PROFESSIONAL RESULTS!**



5th Meridian

M.D. of WILLOW CREEK

PORCUPINE HILLS

35 30
 26 25
 23 24
 14 13
 11 12
 2 10
 35 36
 26 25
 23 24
 14 13
 11 12
 2 1

TP. 13

TP. 12

33
 34
 35
 270
 R. 1

