

# MAR 19720009: BIGHORN

Received date: Dec 31, 1972

Public release date: Jan 01, 1974

## **DISCLAIMER**

By accessing and using the Alberta Energy website to download or otherwise obtain a scanned mineral assessment report, you ("User") agree to be bound by the following terms and conditions:

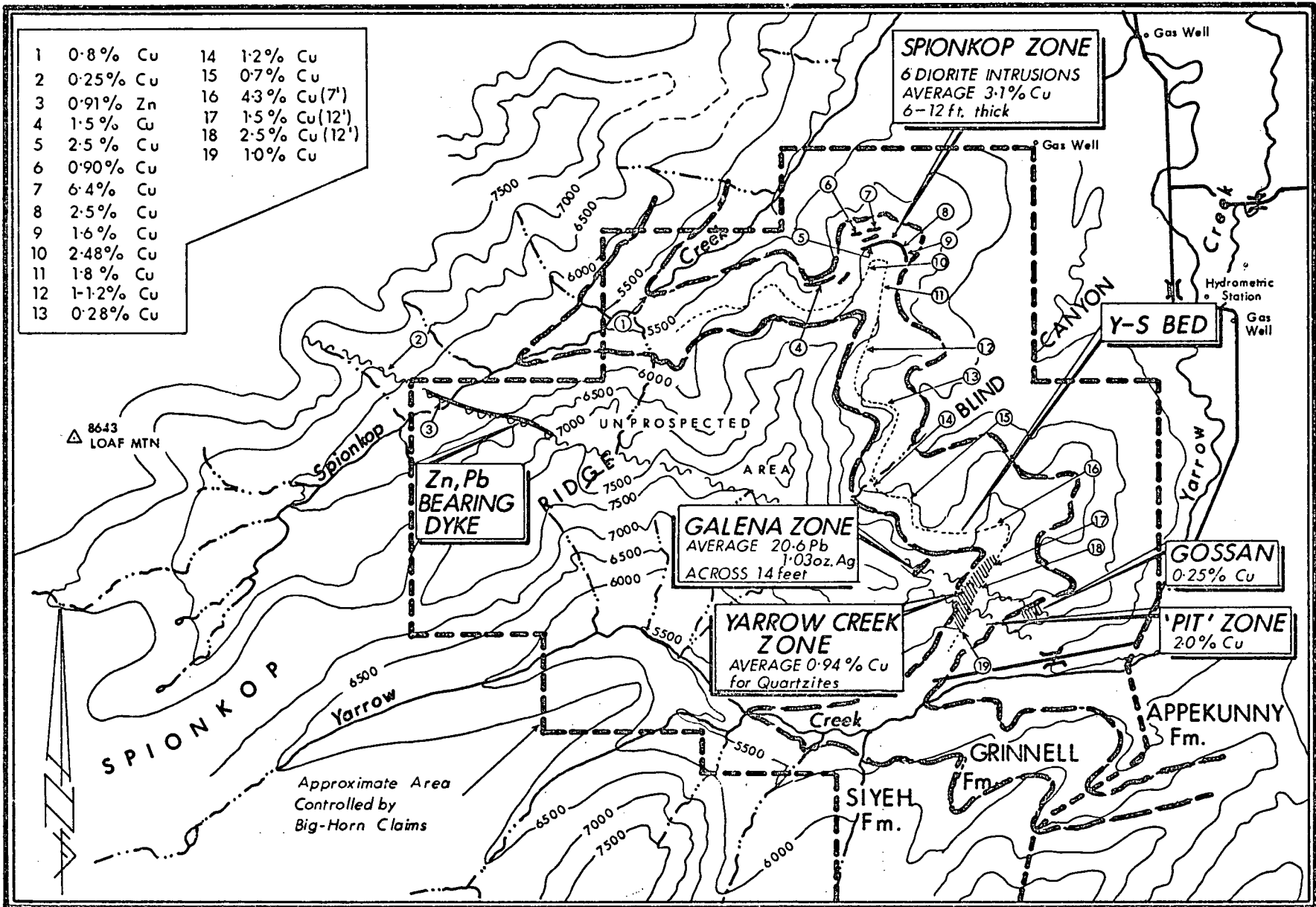
- a) Each scanned mineral assessment report that is downloaded or otherwise obtained from Alberta Energy is provided "AS IS", with no warranties or representations of any kind whatsoever from Her Majesty the Queen in Right of Alberta, as represented by the Minister of Energy ("Minister"), expressed or implied, including, but not limited to, no warranties or other representations from the Minister, regarding the content, accuracy, reliability, use or results from the use of or the integrity, completeness, quality or legibility of each such scanned mineral assessment report;
- b) To the fullest extent permitted by applicable laws, the Minister hereby expressly disclaims, and is released from, liability and responsibility for all warranties and conditions, expressed or implied, in relation to each scanned mineral assessment report shown or displayed on the Alberta Energy website including but not limited to warranties as to the satisfactory quality of or the fitness of the scanned mineral assessment report for a particular purpose and warranties as to the non-infringement or other non-violation of the proprietary rights held by any third party in respect of the scanned mineral assessment report;
- c) To the fullest extent permitted by applicable law, the Minister, and the Minister's employees and agents, exclude and disclaim liability to the User for losses and damages of whatsoever nature and howsoever arising including, without limitation, any direct, indirect, special, consequential, punitive or incidental damages, loss of use, loss of data, loss caused by a virus, loss of income or profit, claims of third parties, even if Alberta Energy have been advised of the possibility of such damages or losses, arising out of or in connection with the use of the Alberta Energy website, including the accessing or downloading of the scanned mineral assessment report and the use for any purpose of the scanned mineral assessment report so downloaded or retrieved.
- d) User agrees to indemnify and hold harmless the Minister, and the Minister's employees and agents against and from any and all third party claims, losses, liabilities, demands, actions or proceedings related to the downloading, distribution, transmissions, storage, redistribution, reproduction or exploitation of each scanned mineral assessment report obtained by the User from Alberta Energy.

GRINNELL TYPE SECTION - YARROW CREEK

<u>Unit #</u>	<u>Thickness</u>	<u>Description</u>
27	5'	massive white quartzite - TOP OF GRINNELL
26	18'	reddish clastic quartzite, minor red argillite
25	12'	dominantly red argillite, minor red clasty quartzite with ripple marks
24	9'	bedded reddish quartzite, bottom 2' limy bed (somewhat rusty) with very well developed load casts; quite massive, ripple marks on top MINERALIZATION DETECTED
23	21'	soft, clasty poorly bedded red quartzite, minor red argillite; topped by 6" of red argillite, quartzite immediately below having good ripple marks MINERALIZATION DETECTED 14' BELOW TOP
22	10'	dominantly red argillite, two thin bands of reddish clasty quartzite
21	14'	poorly bedded soft red clasty quartzite, one 2' band of bedded greenish quartzite in center
20	8½'	mainly red argillite, one 1' band of clasty red quartzite in middle
19	7'	mainly hard greenish-white quartzite <u>top 2'</u> - coarse grained massive 'cap' showing large irregular flute casts and good cross bedding, much darker than 3' directly below <u>next 3'</u> - very massive hard green quartzite weathering reddish on bottom half, some cross bedding <u>next 1'</u> - less massive dirtier quartzite with some cross-bedding, few pebbles <u>bottom 1'</u> - soft thin bedded quartzite containing green argillite pebbles, coarse grained MINERALIZATION DETECTED
18	30'	poorly bedded clasty red quartzite, bottom 1½' cross bedded hard white quartzite, one band of hard white quartzite 1' thick in middle
17	3'	mainly red argillite with two thin quartzite beds in middle
16	7'	<u>top 5'</u> - massive hard greenish quartzite, weathers reddish; some green pebbles <u>middle 1'</u> - red argillite <u>bottom 1'</u> - massive dirty clasty reddish quartzite
15	23'	mainly red argillite with minor clasty red quartzite; 2' band of massive greenish quartzite 10' from base

<u>Unit #</u>	<u>Thickness</u>	<u>Description</u>
14	8'	three bands of hard white quartzite separated by distinct bands of red argillite <u>top 1¼'</u> - top of band hard massive white quartzite with some green pebbles, bottom of band reddish clasty quartzite with good cross bedding; good ripple marks on top of band <u>next 3'</u> - red argillite <u>middle 1'</u> - hard white quartzite with green argillite pebbles, weathers reddish <u>next 1¼'</u> - red argillite <u>bottom 1½'</u> - hard white quartzite
13	45'	red clasty quartzite, red argillite; resistant bands of quartzite up to 1' thick occur at 20' from base. MINERALIZATION DETECTED 20' FROM BASE
12	7½'	massive greenish and reddish quartzite, weathered colour light red; minor black-red argillite pebbles near base, greenish quartzite tends to be in middle; minor interbedded discontinuous red argillite bands
11	7'	mainly red argillite, band of 1½' of quartzite through center, band consists of two beds of greenish quartzite topped by one bed of clasty red quartzite with very well developed ripple marks
10	5½'	<u>top 3½'</u> - massive reddish quartzite with minor pebbles, top 1' cleaner and harder with good ripple marks <u>middle ½'</u> - red argillite <u>bottom 1½'</u> - massive greenish quartzite with irregular ripple marks, some green argillite pebbles
9	15'	reddish clasty quartzite and red argillite, no definite beds
8	5'	massive greenish white quartzite; top 2' dark reddish clasty quartzite with cross bedding; next 2½' massive greenish white quartzite with very good cross bedding; bottom 6" heavily weathered greenish white quartzite with green argillite pebbles and poorly developed ripple marks MINERALIZATION DETECTED
7	5½'	mainly red argillite, minor bands of red quartzite
6	7'	three beds of white quartzite separated by 1'-2' of red argillite <u>top 2'</u> - clasty reddish quartzite with red argillite pebbles <u>next 1½'</u> - red argillite <u>middle 1½'</u> - top 3"-5" hard reddish quartzite with irregular ripple marks and flute casts, middle 6" hard reddish quartzite with good ripple marks, bottom 4"-8" clasty reddish quartzite with red and green argillite pebbles

<u>Unit #</u>	<u>Thickness</u>	<u>Description</u>
		<u>next 1/4'</u> - red argillite
		<u>bottom 3/4'</u> - hard swell sorted white quartzite with green argillite pebbles near bottom; ripple marks
5	26 1/2'	mainly red argillite with irregular bands of soft clasty red quartzite; eight definite bands of reddish quartzite up to 8" thick, quartzite beds better developed near base
4	1 1/2'	reddish clasty quartzite, ripple marks
3	7'	mainly red argillite, two 2"-3" beds of reddish quartzite
2	10'	fine grained very well sorted hard reddish white quartzite; top 8' massive reddish white quartzite, next 1' red argillite, bottom 1' clasty red quartzite tipped with moderately sorted ripple marked red quartzite
1	250'-280' ?	LOWER GRINNELL mainly red argillite, minor greenish argillite, and reddish quartzite



SCALE 0 1 2 MILES

E. Goble July, 1972.

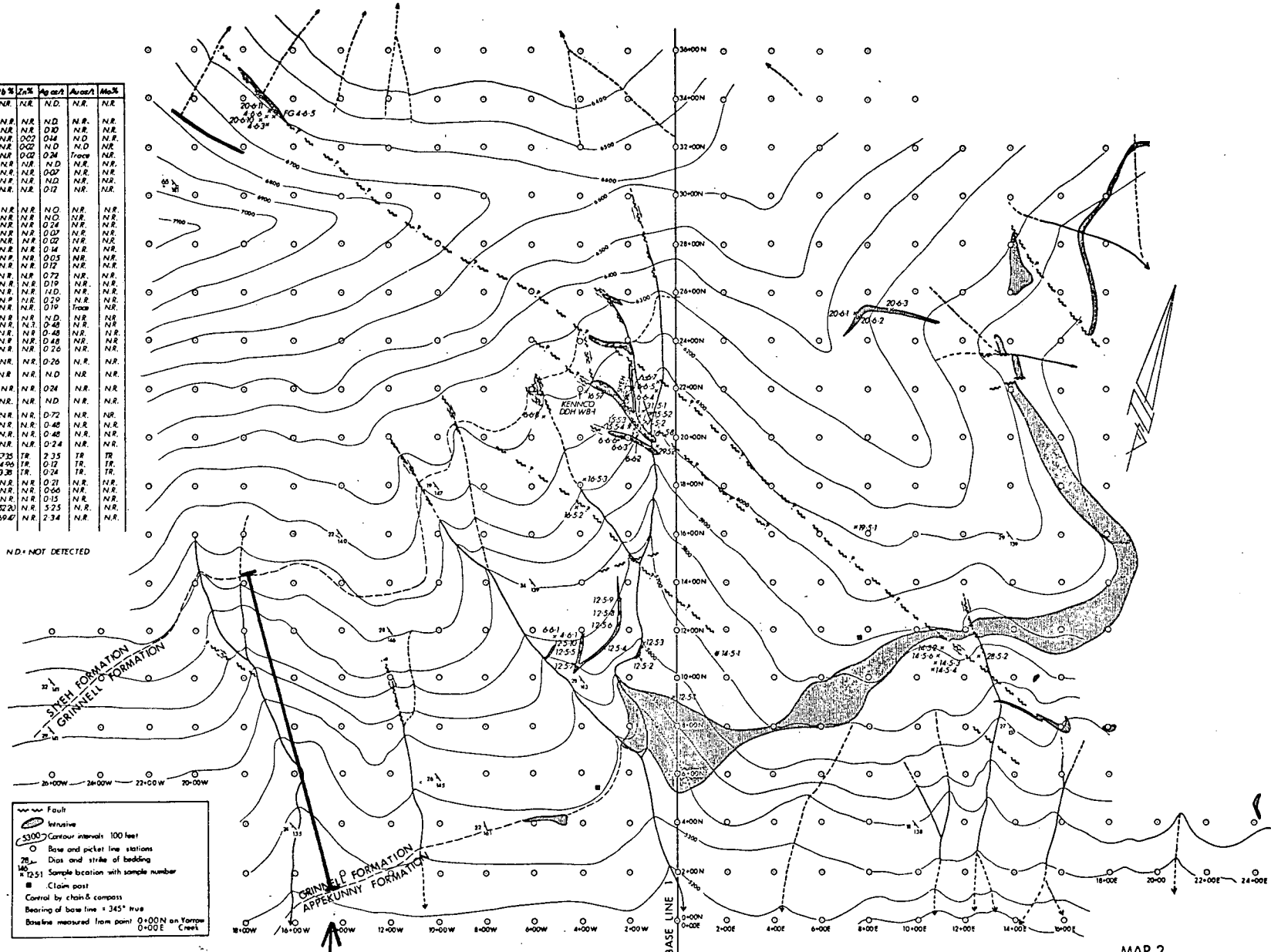
KINTLA EXPLORATIONS LTD  
ZONES OF MINERALIZATION  
BIG-HORN CLAIMS

Map 1.

19720529

Sample	Thick	C%	P&S	Z%	Sp. wt.	Ave. wt.	Mod.	
46-1	0'	1.26	NR	NR	N.D.	N.R.	N.R.	
12-52	10'	0.38	NR	NR	N.D.	N.R.	N.R.	
12-53	10'	0.07	NR	NR	N.D.	N.R.	N.R.	
12-54	12'	1.30	NR	NR	0.02	0.44	N.D.	N.R.
12-55	12'	0.40	NR	NR	0.02	N.D.	N.R.	N.R.
12-56	12'	1.26	NR	NR	0.02	0.34	Trace	NR
12-57	12'	0.97	NR	NR	N.D.	N.R.	N.R.	N.R.
12-58	12'	0.52	NR	NR	0.07	N.R.	N.R.	N.R.
12-59	12'	0.69	NR	NR	N.D.	N.R.	N.R.	N.R.
12-59	12'	0.94	NR	NR	0.17	N.R.	N.R.	N.R.
14-52		0.15	NR	NR	N.D.	N.R.	N.R.	N.R.
14-52#1		0.03	NR	NR	N.D.	N.R.	N.R.	N.R.
14-52#2		0.01	NR	NR	0.04	N.R.	N.R.	N.R.
14-52#3		0.29	NR	NR	0.07	N.R.	N.R.	N.R.
14-52#4		0.21	NR	NR	0.02	N.R.	N.R.	N.R.
14-52#5		0.32	NR	NR	0.14	N.R.	N.R.	N.R.
14-52#6		0.26	NR	NR	0.05	N.R.	N.R.	N.R.
14-53	10'	0.3	NR	NR	0.12	N.R.	N.R.	N.R.
16-5	7'	1.20	NR	NR	0.72	N.R.	N.R.	N.R.
16-51	8'	1.04	NR	NR	0.19	N.R.	N.R.	N.R.
15-52	8'	0.84	NR	NR	N.D.	N.R.	N.R.	N.R.
15-53	8'	1.08	NR	NR	0.19	N.R.	N.R.	N.R.
15-54	4'	0.89	NR	NR	0.19	Trace	N.R.	N.R.
16-51	10'	0.55	NR	NR	N.D.	N.R.	N.R.	N.R.
16-6	10'	0.32	NR	NR	0.48	N.R.	N.R.	N.R.
16-7	6'	0.32	NR	NR	0.48	N.R.	N.R.	N.R.
16-8	10'	1.76	NR	NR	0.48	N.R.	N.R.	N.R.
16-57	8'	0.45	NR	NR	0.26	N.R.	N.R.	N.R.
16-51	12'	0.49	NR	NR	0.26	N.R.	N.R.	N.R.
20-52	16'	0.11	NR	NR	N.D.	N.R.	N.R.	N.R.
20-52	9'	1.39	NR	NR	0.24	N.R.	N.R.	N.R.
31-51	20'	0.54	NR	NR	N.D.	N.R.	N.R.	N.R.
6-61	10'	0.86	NR	NR	0.72	N.R.	N.R.	N.R.
6-62	7'	1.84	NR	NR	0.48	N.R.	N.R.	N.R.
6-63	8'	0.65	NR	NR	0.48	N.R.	N.R.	N.R.
6-64	10'	0.82	NR	NR	0.24	N.R.	N.R.	N.R.
4-6	4'	0.07	57.25	TR	2.35	TR	TR	TR
4-63	10'	0.03	4.90	TR	0.17	TR	TR	TR
4-2	3'	0.07	3.36	TR	0.34	TR	TR	TR
20-61	1'	0.08	NR	NR	0.21	N.R.	N.R.	N.R.
20-62	5'	4.00	NR	NR	0.66	N.R.	N.R.	N.R.
20-63	5'	1.01	NR	NR	0.15	N.R.	N.R.	N.R.
20-64	4'	11.8	NR	NR	5.23	N.R.	N.R.	N.R.
20-611	4'	NR	69.6	NR	2.34	N.R.	N.R.	N.R.

NR = NOT REQUIRED, ND = NOT DETECTED  
TR = TRACE

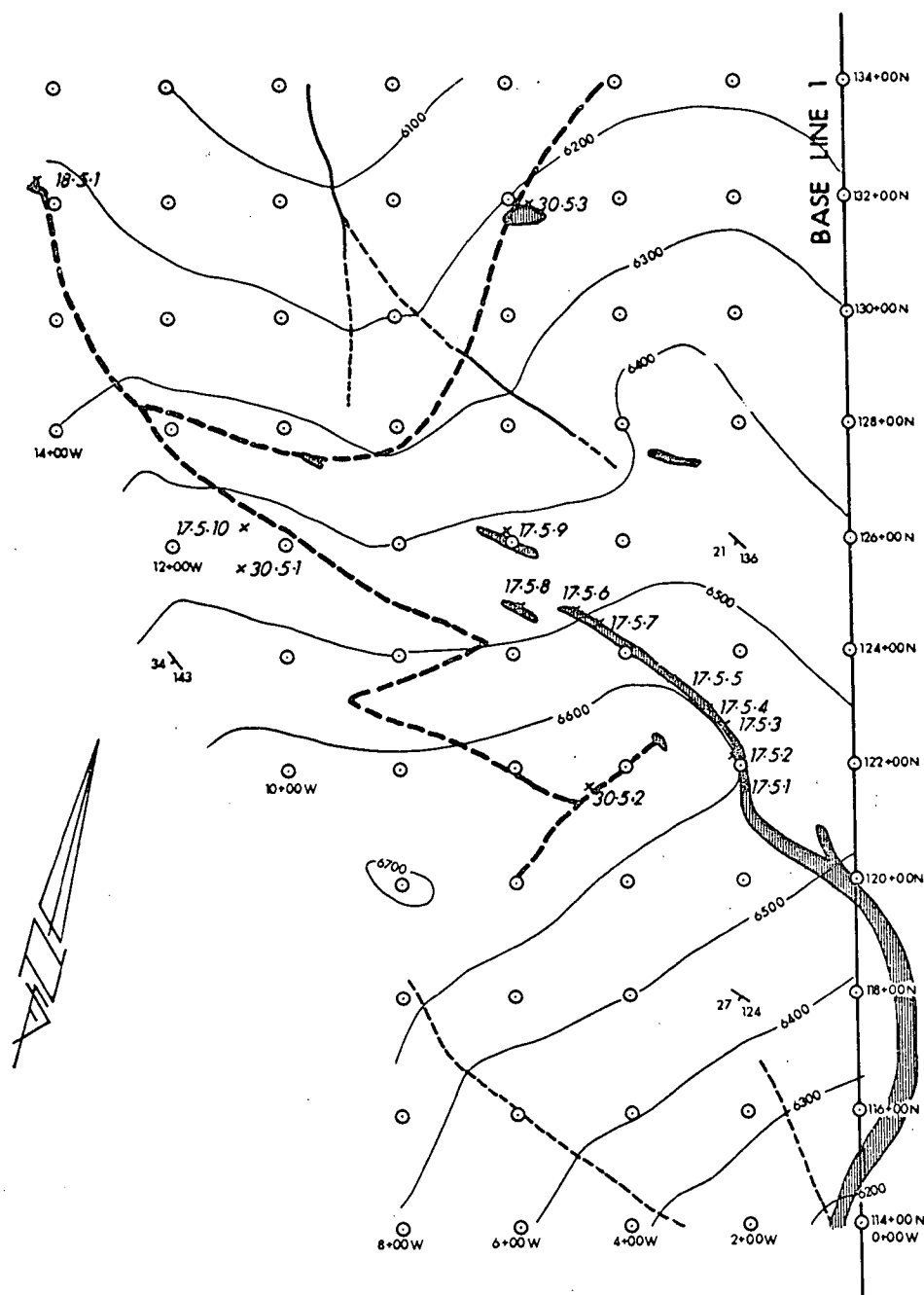


Fault  
 Invasive  
 Contour intervals 100 feet  
 Base and picket line stations  
 Dip and strike of bedding  
 Sample location with sample number  
 Claim post  
 Control by chain & compass  
 Bearing of base line = 345° True  
 Baseline measured from point 0+00N on Yarrow Creek

SHELL WATERLOO NO.  
**Type Section**

MAP 2.  
**KINTLA EXPLORATIONS LTD.**  
 SAMPLE LOCATION MAP  
 ZONE 1  
 Big Horn - Claims - Yarrow Creek Area  
 SW - Alberta  
 SCALE 0 200 400 FEET  
 R.Goble June 1972

1972056

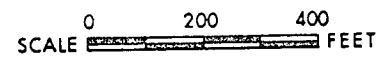


Sample	Thick.	Cu %	Zn %	Au oz/t	Ag oz/t
17-5-1	7'	2.52	N.R.	N.R.	0.02
17-5-2	30'	2.32	N.R.	N.R.	0.10
17-5-3	2'	6.48	N.R.	N.R.	N.D.
17-5-4	6'	2.44	N.R.	N.R.	N.D.
17-5-5	7'	1.88	N.R.	N.R.	N.D.
17-5-6	4'	2.68	N.R.	N.R.	0.22
17-5-7	9'	2.36	N.R.	N.R.	0.10
17-5-8	5'	1.60	N.R.	N.R.	0.07
17-5-9	8'	0.90	N.R.	N.R.	0.12
17-5-10	8'	2.48	N.R.	N.R.	0.12
18-5-1	5'	0.32	N.R.	N.R.	N.D.
30-5-1	8'	0.86	N.R.	N.R.	0.12
30-5-2	7'	1.78	N.R.	N.R.	0.24
30-5-3	10'	0.62	N.R.	N.R.	N.D.

N.R. = NOT REQUIRED  
N.D. = NOT DETECTED

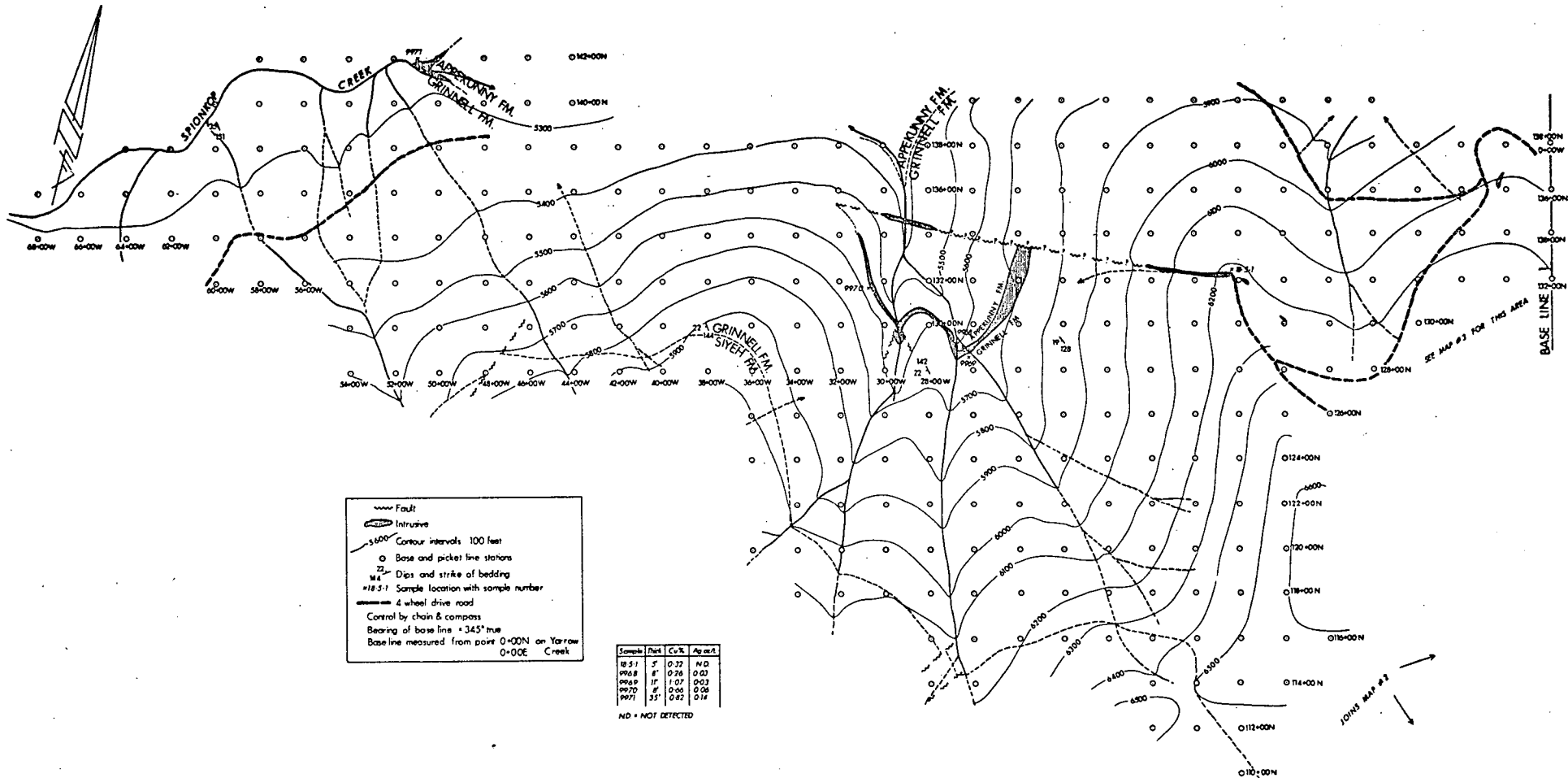
Intrusive  
 Contour intervals 100 ft.  
 Base and picket line stations  
 Dips and strike of bedding  
 Sample location with sample number  
 4 wheel drive road  
 Control by chain & compass  
 Bearing of base line = 345° true  
 Base line measured from point 0+00N on Yarrow Creek

MAP 3  
 KINTLA EXPLORATIONS LTD.  
 SAMPLE LOCATION MAP  
 ZONE 2  
 Big Horn - Claims — Spionkop Ridge Area  
 SW-Alberta



R. Goble — June 1972

19720009



MAP 4,  
**KINTLA EXPLORATIONS LTD.**  
 SAMPLE LOCATION MAP  
 ZONE 2

Big Horn - Claims - Spionkop Creek Area  
 SW - Alberta

SCALE 0 200 400 FEET  
 R. Golbe - July, 1972

19720809