

# MAR 19720005: BIGHORN

Received date: Dec 31, 1972

Public release date: Jan 01, 1974

## **DISCLAIMER**

By accessing and using the Alberta Energy website to download or otherwise obtain a scanned mineral assessment report, you ("User") agree to be bound by the following terms and conditions:

- a) Each scanned mineral assessment report that is downloaded or otherwise obtained from Alberta Energy is provided "AS IS", with no warranties or representations of any kind whatsoever from Her Majesty the Queen in Right of Alberta, as represented by the Minister of Energy ("Minister"), expressed or implied, including, but not limited to, no warranties or other representations from the Minister, regarding the content, accuracy, reliability, use or results from the use of or the integrity, completeness, quality or legibility of each such scanned mineral assessment report;
- b) To the fullest extent permitted by applicable laws, the Minister hereby expressly disclaims, and is released from, liability and responsibility for all warranties and conditions, expressed or implied, in relation to each scanned mineral assessment report shown or displayed on the Alberta Energy website including but not limited to warranties as to the satisfactory quality of or the fitness of the scanned mineral assessment report for a particular purpose and warranties as to the non-infringement or other non-violation of the proprietary rights held by any third party in respect of the scanned mineral assessment report;
- c) To the fullest extent permitted by applicable law, the Minister, and the Minister's employees and agents, exclude and disclaim liability to the User for losses and damages of whatsoever nature and howsoever arising including, without limitation, any direct, indirect, special, consequential, punitive or incidental damages, loss of use, loss of data, loss caused by a virus, loss of income or profit, claims of third parties, even if Alberta Energy have been advised of the possibility of such damages or losses, arising out of or in connection with the use of the Alberta Energy website, including the accessing or downloading of the scanned mineral assessment report and the use for any purpose of the scanned mineral assessment report so downloaded or retrieved.
- d) User agrees to indemnify and hold harmless the Minister, and the Minister's employees and agents against and from any and all third party claims, losses, liabilities, demands, actions or proceedings related to the downloading, distribution, transmissions, storage, redistribution, reproduction or exploitation of each scanned mineral assessment report obtained by the User from Alberta Energy.

YARROW CREEK ZONE

<u>all beds</u>	<u>Average strike length</u>	<u>Assumed depth</u>	<u>Thickness</u>	<u>Cubic feet per ton</u>	<u>Estimated Tonnage</u>	<u>Average Surface Grade</u>	<u>Value per ton</u>
	1600'	800'	150'	10	192 million	0.5%Cu 0.2oz. Ag	\$5.32
			<u>Estimated mining costs per ton (open pit)</u>	<u>Estimated Profit per ton</u>	<u>Estimated Profit</u>		
			\$5.00	32¢	\$61.44 million		

Y - S BED

a)	2500'	5000'	12'	10	15 million	1.5% Cu	\$15.00
	1000'	5000'	10'	10	5 million	1.0% Cu	\$10.00
	1000'	5000'	7'	10	3.5 million	3.0%Cu	\$30.00
	2000'	5000'	6'	10	6 million	1.0% Cu	\$10.00
	1500'	5000'	8'	10	6 million	1.3% Cu	\$13.00
	2000'	5000'	8'	10	8 million	1.8% Cu	\$18.00
	10000'	total strike length					

<u>Estimated mining costs per ton (underground)</u>	<u>Estimated Profit</u>
\$10.00	\$75 million
\$10.00	\$ 0
\$10.00	\$70 million
\$10.00	\$ 0
\$10.00	\$18 million
\$10.00	<u>\$64 million</u>

TOTAL ESTIMATED PROFIT: \$227 million

b) Assuming depth at 1/10 strike length:

TOTAL ESTIMATED PROFIT: \$45.4 million

SPIONKOP ZONE:

2000'	1000'	8'	10	1.6 million	3.1% Cu 0.2oz Ag	\$31.32
\$10.00	\$21.32	\$34.1 million				

BLIND CANYON (GALENA) ZONE:

a)	800'	400'	4'	5	253,000	59.7%Pb 3.31oz. Ag	\$184.40
-----							
	\$10.00	\$174.40	\$44.1 million				

b)	800'	400'	14'	10	448,000	20.6%Pb 1.03oz. Ag	\$62.52
-----							
	\$10.00	\$52.52	\$23.5 million				

c)	800'	400'	19'	10	608,000	16.2%Pb 0.82oz. Ag	\$49.91
-----							
	\$10.00	\$39.91	\$24.3 million				

SUMMARY:

SPIONKOP ZONE: 1.6 million tons averaging 3.1% Cu, 0.2 oz. per ton Ag.

Yarrow Creek Zone:

- a) if open pitted: 192 million tons averaging 0.5% Cu, 0.2 oz. Ag  
This is assuming a depth of 800 feet. A new discovery in the Blind Canyon indicates at least 3000 feet of mineralized quartzite.
- b) Y - S Bed alone: 43.5 million tons averaging 1.29%Cu,  
Assuming depth at 1/10 strike length gives 8.7 million tons.

Blind Canyon Zone: 253,000 tons averaging 59.7% Pb, 3.31 oz per ton Ag, or  
448,000 tons averaging 20.6% Pb, 1.03 oz per ton Ag, or  
608,000 tons averaging 16.2% Pb, 0.82 oz per ton Ag.

TENTATIVE PROFIT ESTIMATE:

A tentative estimate of profit from these zones was calculated using \$10.00 per ton as a break-even value for underground mining and \$5.00 per ton for open pit mining. The results are:

Spionkop Zone - \$34.1 million

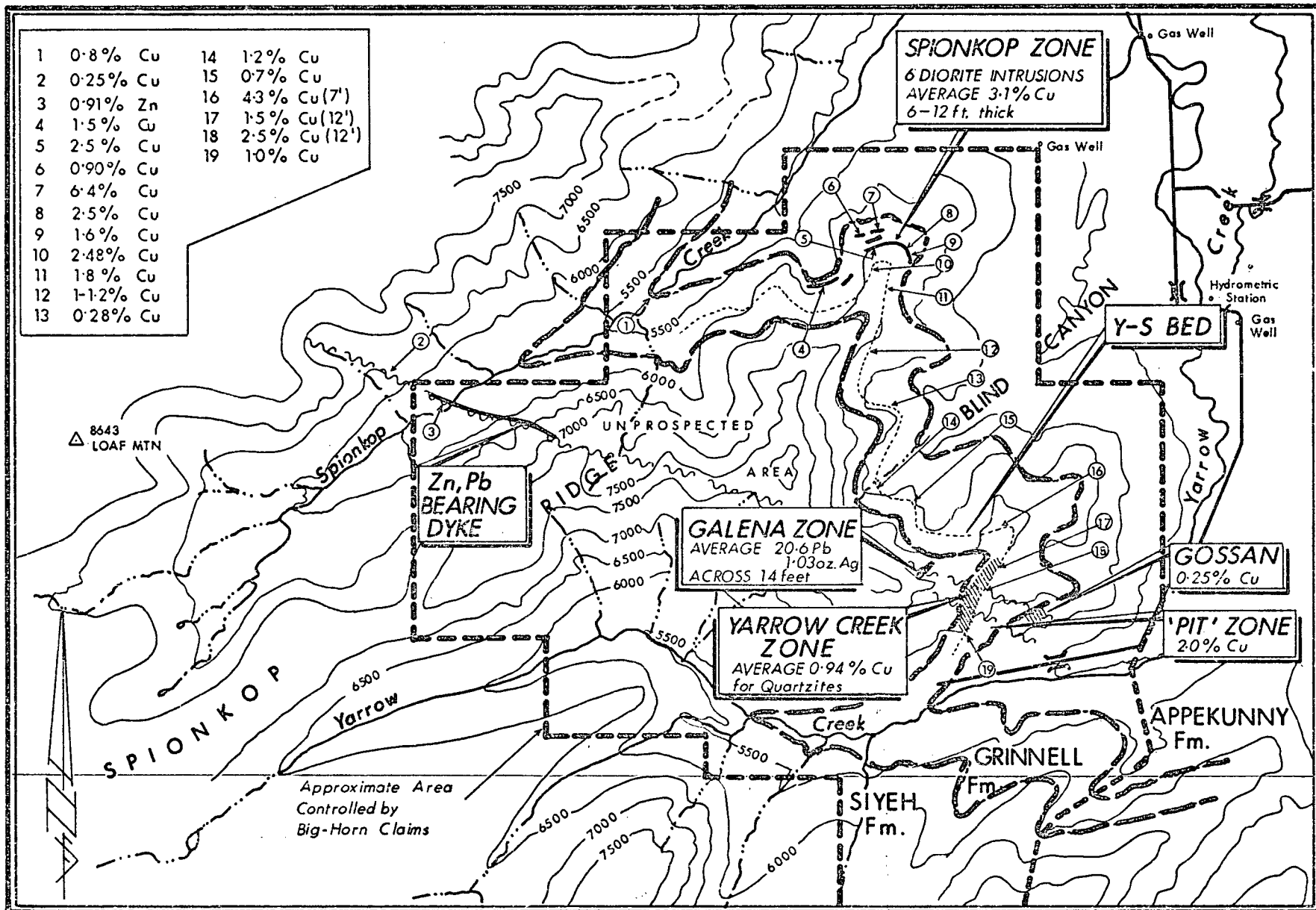
Yarrow Creek Zone - \$61.44 million

Y - S Bed alone - \$227 million

Y - S Bed using 1/10 - \$45.4 million  
strike as depth

Blind Canyon (Galena)Zone -

- a) - \$44.1 million
- b) - \$23.5 million
- c) - \$24.3 million



SCALE 0 1 2 MILES

E. Goble July, 1972.

Scale  $\approx$  1:50,000

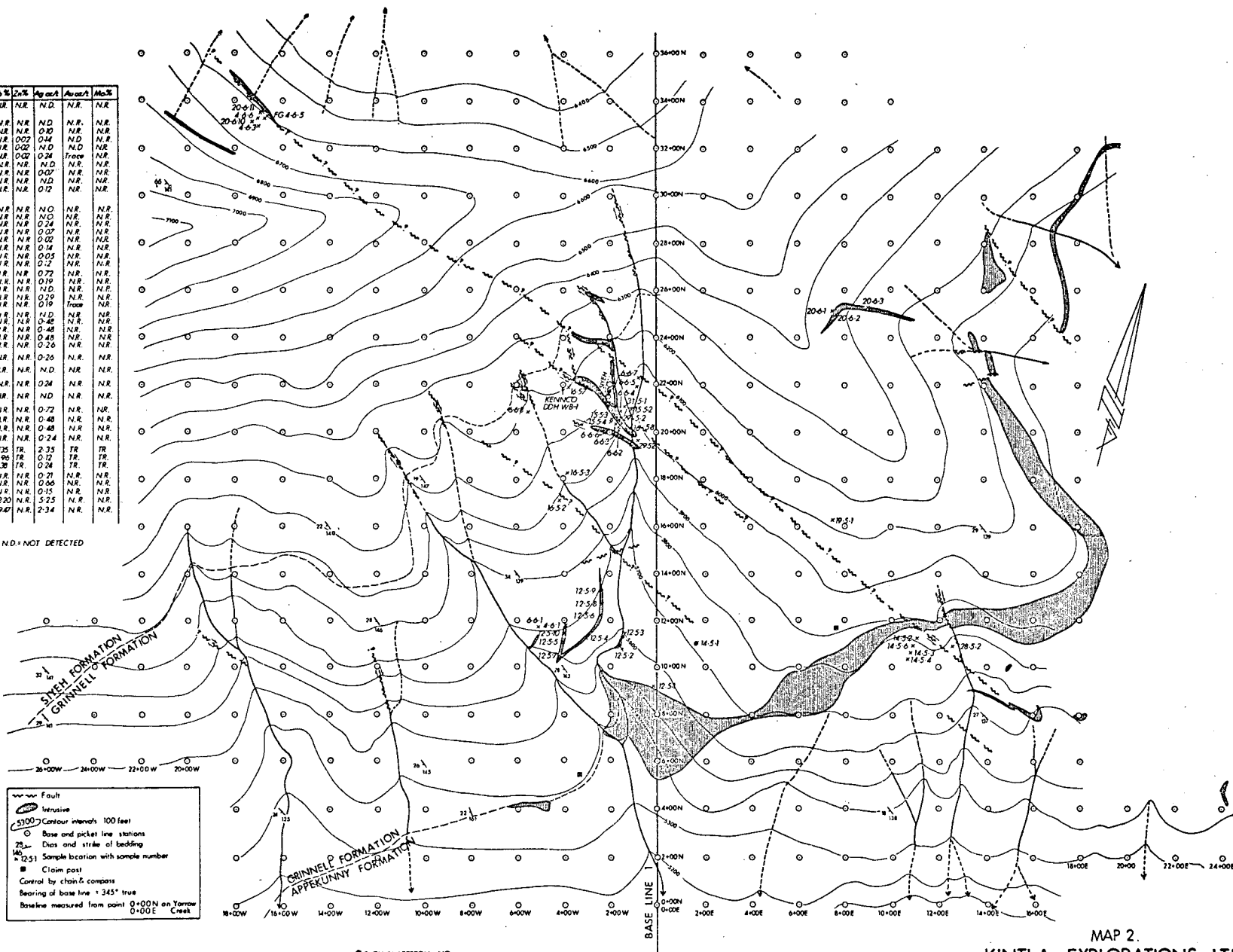
KINTLA EXPLORATIONS LTD  
ZONES OF MINERALIZATION  
BIG-HORN CLAIMS

Map 1.

1972005

Sample	Thick	Co %	Pb %	Zn %	Ag cont	Au cont	Mo %
4-01	9'	1.20	NR	NR	N.D.	NR	NR
12-52	27'	0.38	NR	NR	N.D.	NR	NR
12-53	5'	0.00	NR	NR	0.80	NR	NR
12-54	12'	1.30	NR	0.02	0.44	NR	NR
12-55	7'	0.42	NR	0.02	N.D.	NR	NR
12-56	7'	3.26	NR	0.02	0.24	Trace	NR
12-57	12'	0.97	NR	NR	N.D.	NR	NR
12-58	12'	0.52	NR	NR	0.07	NR	NR
12-59	7'	0.98	NR	NR	N.D.	NR	NR
12-60	10'	0.94	NR	NR	0.12	NR	NR
14-52		0.15	NR	NR	N.O.	NR	NR
14-52#2		0.13	NR	NR	N.O.	NR	NR
14-52#3		0.09	NR	NR	0.24	NR	NR
14-52#4		0.29	NR	NR	0.07	NR	NR
14-52#5		0.21	NR	NR	0.02	NR	NR
14-52#6		0.32	NR	NR	0.14	NR	NR
14-52#7		0.26	NR	NR	0.05	NR	NR
14-52#8		0.29	NR	NR	0.2	NR	NR
16-52	7'	1.20	NR	NR	0.72	NR	NR
16-51	8'	1.04	NR	NR	0.19	NR	NR
15-52	8'	0.84	NR	NR	N.D.	NR	NR
15-53	6'	1.08	NR	NR	0.19	Trace	NR
15-54	4'	0.89	NR	NR	N.D.	NR	NR
16-53	7'	0.51	NR	NR	0.48	NR	NR
6-6-0	10'	0.32	NR	NR	0.48	NR	NR
6-6-7	6'	1.76	NR	NR	0.18	NR	NR
6-6-8	10'	0.43	NR	NR	0.26	NR	NR
10-51	12'	0.49	NR	NR	0.26	NR	NR
28-52	16'	0.01	NR	NR	N.D.	NR	NR
29-52	9'	1.39	NR	NR	0.24	NR	NR
31-51	20'	0.54	NR	NR	N.D.	NR	NR
6-6-1	10'	0.86	NR	NR	0.72	NR	NR
6-6-2	7'	1.84	NR	NR	0.48	NR	NR
6-6-3	6'	0.65	NR	NR	0.48	NR	NR
6-6-4	10'	0.82	NR	NR	0.24	NR	NR
4-6-4	4'	0.07	TR	2.35	TR	TR	TR
4-6-5	12'	0.05	TR	0.12	TR	TR	TR
4-6-5	5'	0.02	TR	0.24	TR	TR	TR
20-6-1	1'	0.98	NR	NR	0.21	NR	NR
20-6-2	5'	4.80	NR	NR	0.06	NR	NR
20-6-3	5'	1.03	NR	NR	0.15	NR	NR
20-6-4	4'	NR	NR	NR	5.25	NR	NR
20-6-11	4'	NR	NR	NR	2.34	NR	NR

NR = NOT REQUIRED, N.D. = NOT DETECTED  
TR = TRACE

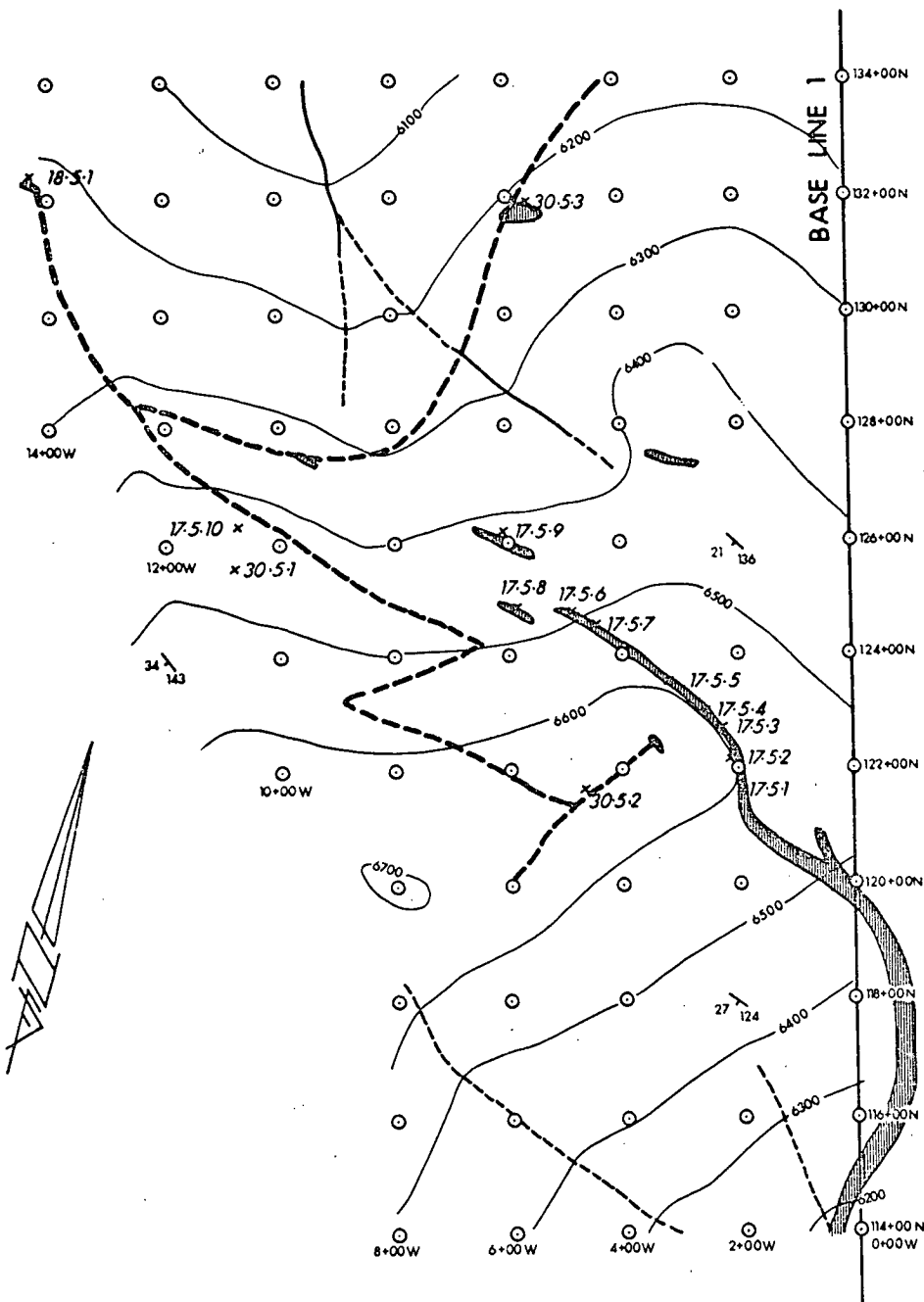


© SHELL WATERTON NO.

MAP 2.  
KINTLA EXPLORATIONS LTD.  
SAMPLE LOCATION MAP  
ZONE 1  
Big Horn - Claims - Yarrow Creek Area  
SW - Alberta  
SCALE 0 200 400 FEET  
R.Gable June 1972

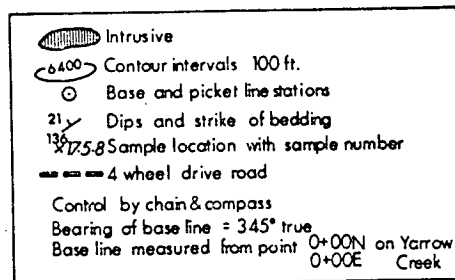
Scale  $\approx$  1:7,300  
1 cm = 73 m

19720005



Sample	Thick.	Cu %	Zn %	Au oz/t.	Ag oz/t.
17-5-1	7'	2.52	N.R.	N.R.	0.02
17-5-2	30'	2.32	N.R.	N.R.	0.10
17-5-3	2'	6.48	N.R.	N.R.	N.D.
17-5-4	6'	2.44	N.R.	N.R.	N.D.
17-5-5	7'	1.88	N.R.	N.R.	N.D.
17-5-6	4'	2.68	N.R.	N.R.	0.22
17-5-7	9'	2.36	N.R.	N.R.	0.10
17-5-8	5'	1.60	N.R.	N.R.	0.07
17-5-9	8'	0.90	N.R.	N.R.	0.12
17-5-10	8'	2.48	N.R.	N.R.	0.12
18-5-1	5'	0.32	N.R.	N.R.	N.D.
30-5-1	8'	0.86	N.R.	N.R.	0.12
30-5-2	7'	1.78	N.R.	N.R.	0.24
30-5-3	10'	0.62	N.R.	N.R.	N.D.

N.R. = NOT REQUIRED  
N.D. = NOT DETECTED



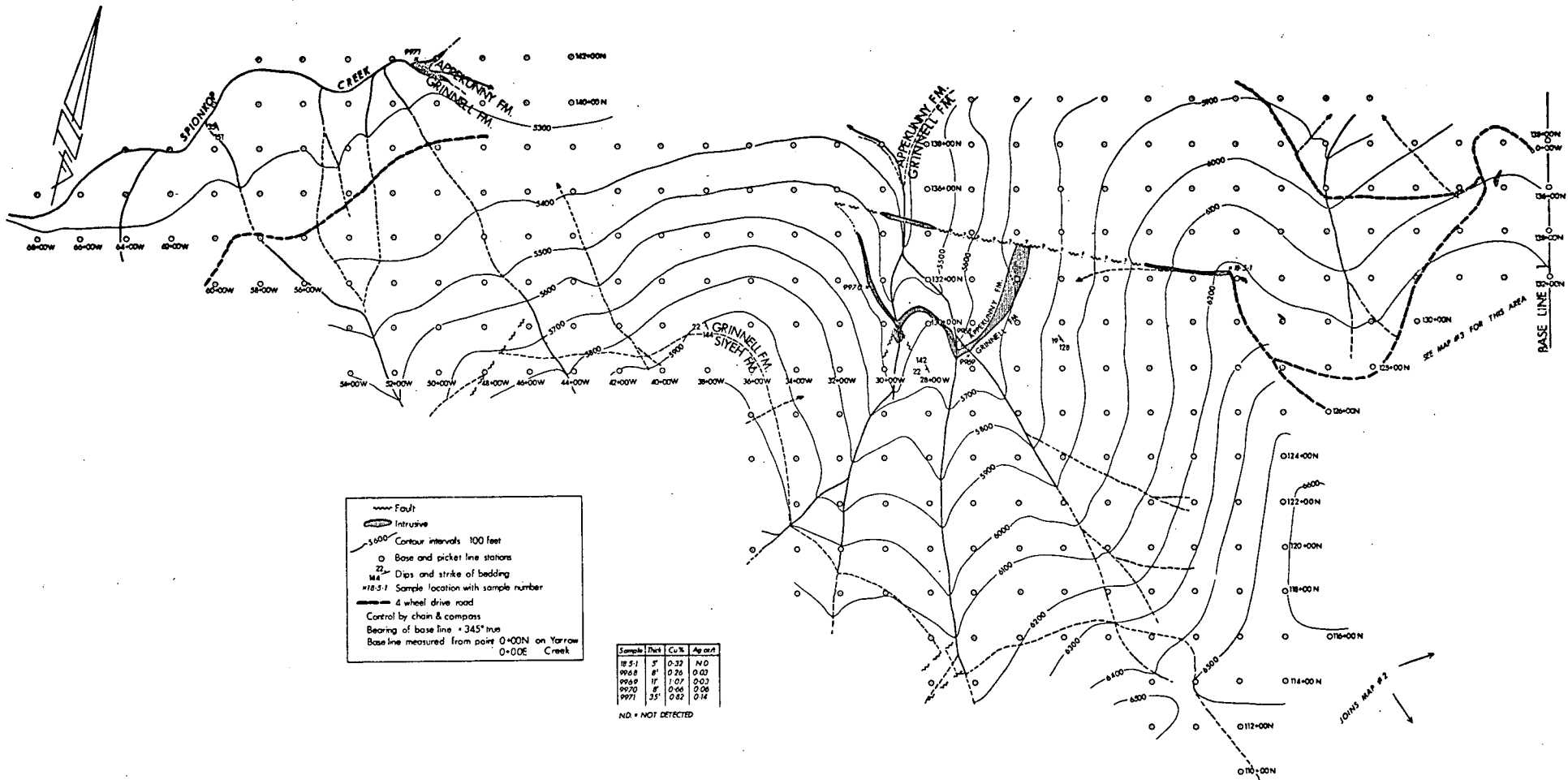
MAP 3.  
KINTLA EXPLORATIONS LTD.  
SAMPLE LOCATION MAP  
ZONE 2  
Big Horn - Claims — Spionkop Ridge Area  
SW-Alberta

SCALE 0 200 400 FEET

R. Goble — June 1972

Scale  $\approx$  1:4,000

1972005



- - - - Fault  
 [Symbol] Intrusive  
 1000 Contour intervals 100 feet  
 O Base and picket line stations  
 22 Dips and strike of bedding  
 #18-5-1 Sample location with sample number  
 - - - - 4 wheel drive road  
 Control by chain & compass  
 Bearing of base line = 345° true  
 Base line measured from point 0+00N on Yarrow  
 0+00E Creek

Sample	Thk	Cu%	Ag cont
9969	5'	0.32	N.G.
9968	4'	0.26	0.03
9969	1'	1.07	0.03
9970	8'	0.66	0.06
9971	35'	0.62	0.14

ND = NOT DETECTED

MAP 4.  
**KINTLA EXPLORATIONS LTD.**  
 SAMPLE LOCATION MAP  
 ZONE 2  
 Big Horn-Claims — Spionkop Creek Area  
 SW-Alberta  
 SCALE 0 200 400 FEET  
 R. Gable - July, 1972

Scale ≈ 1:8,500

19720005



19720005

BIBLIOGRAPHY OF TECHNICAL REPORTS  
CERTIFICATES OF RECORDS  
KINTLA EXPLORATIONS LTD.

MISSING?

Department of Energy, Mines & Resources, 1968, 1973: Map of Waterton Lake, Alberta and Sage Creek, B.C. - Alta.

599 Kintla Explorations Ltd., 1972: Estimates of Tonnage, Mining Costs, Mining Profit, Cert's., The Bighorn Claims, S.W. Alberta. CU-AF-041(1)

601 Kintla Explorations Ltd., 1972: Sample Location Maps - Zones of Mineralization - Bighorn Claims, S.W. Alberta. CU-AF-041(2)

604 Goble, E. O., Goble, R.J., 1974: Final Geological Report, 1972-1973 Programs, Bighorn Claims Yarrow Creek - Spionkop Creek Southwestern Alberta. Kintla Explorations Ltd., Report. CU-AF-041(3)

605 Goble, E. O., 1974: Geological Report 1974 Diamond Drilling Program, Bighorn Claims Yarrow Creek - Spionkop Creek Southwestern Alberta. Kintla Explorations Ltd., Report. CU-AF-041(4)

607 Goble, E. O., 1973: Geological Report #V - P1 June - September 1972, Permit Areas #171, 172, 173. Southwestern Alberta. Kintla Explorations Ltd., Report. CU-AF-041(5)

609 Goble, E. O., 1976: Report on the 1976 Prospecting Program Undertaken by Kintla Explorations Ltd. in Southwestern Alberta. CU-AF-041(6)

612 Goble, E. O., 1972: Spring Program 1972, Bighorn, Beth, Commerce, Forum, Lin, Opal, and Sage Claims. Kintla Explorations Ltd., Report. CU-AF-041(7)

613 Goble, E. O., Goble, R. J. Morton, R., 1974: Sulphide Deposits Associated with Precambrian Belt - Purcell Strata in Alberta and British Columbia Canada. Kintla Explorations Ltd., Report. CU-AF-041(8)

643 Goble, R. J., 1972: Geological Report No. B1 Spring Program - 1972, Bighorn Claim Yarrow Creek - Spionkop Creek Southwestern Alberta. Kintla Explorations Ltd., Report. CU-AF-041(9)

677 Goble, R. J., 1972: Grinnell Type Section, Yarrow Creek. Kintla Explorations Ltd., Report. CU-AF-041(10)

679 Morton, R.D., 1971: Report on the Geology and Economic Potential of the Properties of Kintla Exploration Ltd. Within Southeast British Columbia & Southwest Alberta. CU-AF-041(11)

715 Morton, R. D., 1972: Supplementary Report on Recent Discoveries on the Bighorn Claim Group of Kintla Explorations Ltd. in Southwest Alberta. CU-AF-041(12)

594-601 Stevenson, R. W., 1968: Final Report - 1967, Waterton Copper Project, Waterton Area, Alberta. Kennco Explorations (Western) Ltd., Report. CU-AF-041(13)