

MAR 19690037: NORTHEASTERN ALBERTA

Received date: Dec 31, 1969

Public release date: Jan 01, 1971

DISCLAIMER

By accessing and using the Alberta Energy website to download or otherwise obtain a scanned mineral assessment report, you ("User") agree to be bound by the following terms and conditions:

- a) Each scanned mineral assessment report that is downloaded or otherwise obtained from Alberta Energy is provided "AS IS", with no warranties or representations of any kind whatsoever from Her Majesty the Queen in Right of Alberta, as represented by the Minister of Energy ("Minister"), expressed or implied, including, but not limited to, no warranties or other representations from the Minister, regarding the content, accuracy, reliability, use or results from the use of or the integrity, completeness, quality or legibility of each such scanned mineral assessment report;
- b) To the fullest extent permitted by applicable laws, the Minister hereby expressly disclaims, and is released from, liability and responsibility for all warranties and conditions, expressed or implied, in relation to each scanned mineral assessment report shown or displayed on the Alberta Energy website including but not limited to warranties as to the satisfactory quality of or the fitness of the scanned mineral assessment report for a particular purpose and warranties as to the non-infringement or other non-violation of the proprietary rights held by any third party in respect of the scanned mineral assessment report;
- c) To the fullest extent permitted by applicable law, the Minister, and the Minister's employees and agents, exclude and disclaim liability to the User for losses and damages of whatsoever nature and howsoever arising including, without limitation, any direct, indirect, special, consequential, punitive or incidental damages, loss of use, loss of data, loss caused by a virus, loss of income or profit, claims of third parties, even if Alberta Energy have been advised of the possibility of such damages or losses, arising out of or in connection with the use of the Alberta Energy website, including the accessing or downloading of the scanned mineral assessment report and the use for any purpose of the scanned mineral assessment report so downloaded or retrieved.
- d) User agrees to indemnify and hold harmless the Minister, and the Minister's employees and agents against and from any and all third party claims, losses, liabilities, demands, actions or proceedings related to the downloading, distribution, transmissions, storage, redistribution, reproduction or exploitation of each scanned mineral assessment report obtained by the User from Alberta Energy.

R. Wood,

Edmonton 31, Alta

Mr. R. A. Seaton,
Director,
Minerals Division,
Edmonton, Alta.

Dear Mr. Seaton:

Sorry for the delay in gathering up the information to write this letter since our phone conversation some time ago in regards to the land on Mineral Permit #114.

Two trips were made in prospecting and preliminary work on the above block. One on July 2 to 5, 1969 and Aug. 6 to Aug. 9, 1969. We flew in from Laramie City in a Cessna 180. C. French Scintometer SP3 was used on both trips. No readings were

encountered that would consider further work. Very interesting formation and much faulting with mineralized stain was noted at the north end of the block.

I would very much like to prospect this area over this summer if the ground is open and a grub stake can be raised.

The total expenses for the two trips, rent of accommodations, flying, wages, etc were approx \$1,550.00

The reason no further work was done was due to the tight money situation and the Mining Co. I was with at the time ran short of funds. And money spent and work done by myself for the last two months was of my own.

The reason I am requesting the bond be returned is for a grub stake for another season prospecting.

Yours Truly,

139101

FEC:AWB

April 30, 1970.

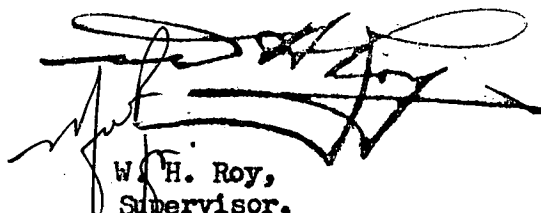
Dear Sir:

Re: Quartz Mineral Exploration Permit
No. 114

see

I enclose herewith Cheque No. TC 74927 in the amount of \$1,000.00 being the refund of the cash deposit held in connection with this permit.

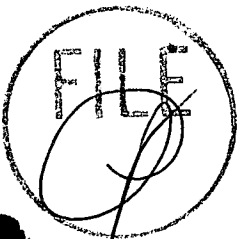
Yours very truly,

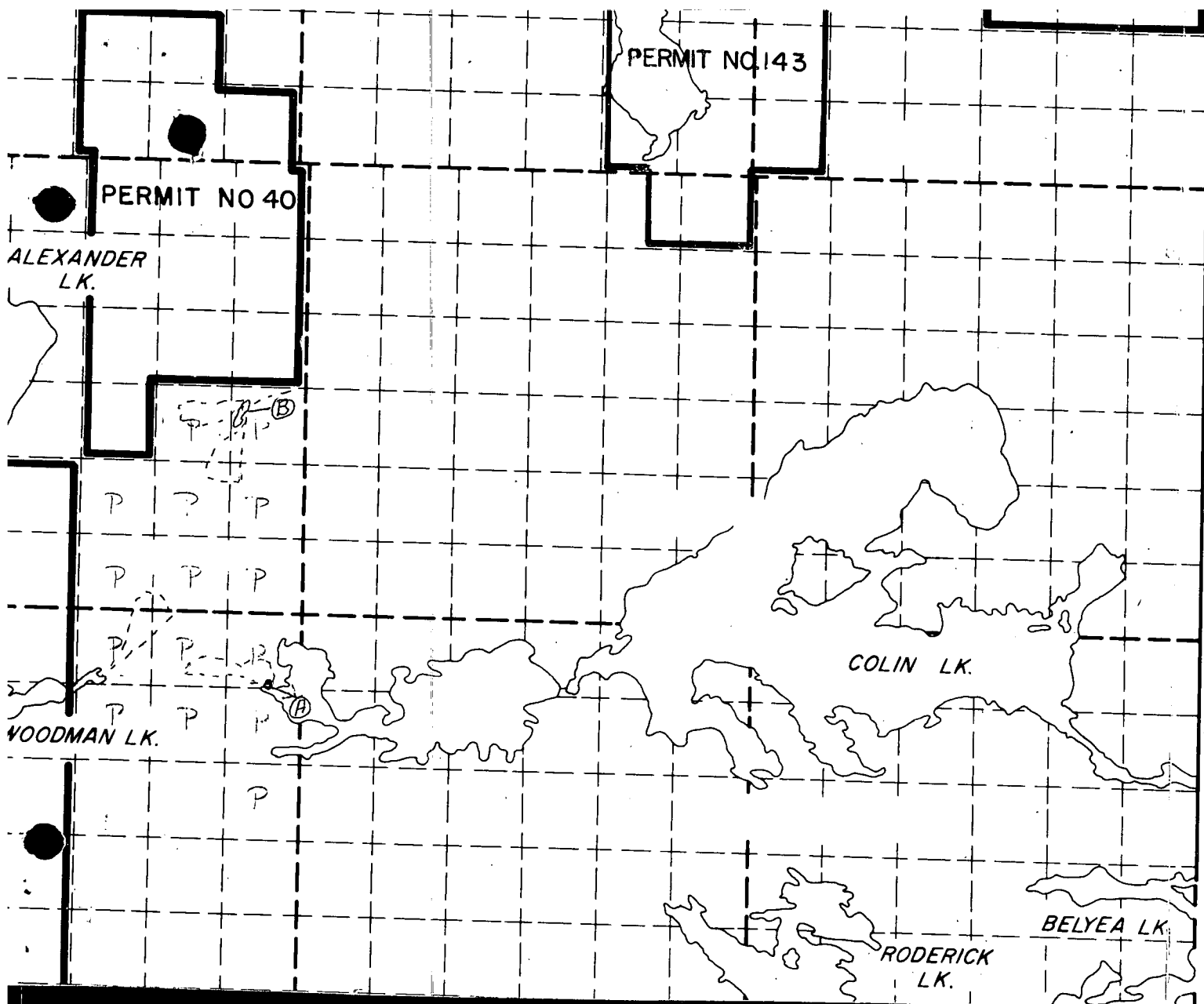


W. H. Roy,
Supervisor,
Reservations, Permits and Licences.

Mr. Anthony Wood,
[REDACTED]
EDMONTON 15, Alberta.

Encl.





A- Location of landing and Camp site July 2/69.

B- Location of landing on small lake or shown on this map in Aug. 6/69.

Location B is a very interesting area and recommend this area **TP122** for further prospecting for base metals.

----- approximate location of traverse made on foot.

South end of block. Very little outcroppings, mostly overburden, glacial til, sand etc.

North end of block **TP121** is hosted, much faulting and has faulting.

QUARTZ MINERAL EXPLORATION PERMIT No. 114

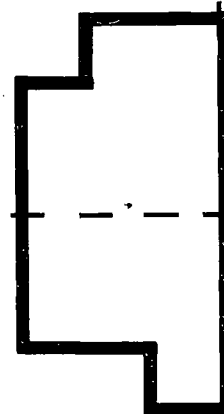
19690037

ANTHONY WOOD,

EDMONTON, ALBERTA

DATE OF ISSUE — DECEMBER 27, 1968

AREA — 9,600 ACRES



TP. 122

TP. 121

R. 3

R. 2 W. 4 M.