

# MAR 19690011: LAKE ATHABASCA

Received date: Dec 31, 1969

Public release date: Jan 01, 1971

## **DISCLAIMER**

By accessing and using the Alberta Energy website to download or otherwise obtain a scanned mineral assessment report, you ("User") agree to be bound by the following terms and conditions:

- a) Each scanned mineral assessment report that is downloaded or otherwise obtained from Alberta Energy is provided "AS IS", with no warranties or representations of any kind whatsoever from Her Majesty the Queen in Right of Alberta, as represented by the Minister of Energy ("Minister"), expressed or implied, including, but not limited to, no warranties or other representations from the Minister, regarding the content, accuracy, reliability, use or results from the use of or the integrity, completeness, quality or legibility of each such scanned mineral assessment report;
- b) To the fullest extent permitted by applicable laws, the Minister hereby expressly disclaims, and is released from, liability and responsibility for all warranties and conditions, expressed or implied, in relation to each scanned mineral assessment report shown or displayed on the Alberta Energy website including but not limited to warranties as to the satisfactory quality of or the fitness of the scanned mineral assessment report for a particular purpose and warranties as to the non-infringement or other non-violation of the proprietary rights held by any third party in respect of the scanned mineral assessment report;
- c) To the fullest extent permitted by applicable law, the Minister, and the Minister's employees and agents, exclude and disclaim liability to the User for losses and damages of whatsoever nature and howsoever arising including, without limitation, any direct, indirect, special, consequential, punitive or incidental damages, loss of use, loss of data, loss caused by a virus, loss of income or profit, claims of third parties, even if Alberta Energy have been advised of the possibility of such damages or losses, arising out of or in connection with the use of the Alberta Energy website, including the accessing or downloading of the scanned mineral assessment report and the use for any purpose of the scanned mineral assessment report so downloaded or retrieved.
- d) User agrees to indemnify and hold harmless the Minister, and the Minister's employees and agents against and from any and all third party claims, losses, liabilities, demands, actions or proceedings related to the downloading, distribution, transmissions, storage, redistribution, reproduction or exploitation of each scanned mineral assessment report obtained by the User from Alberta Energy.

19690011

ECONOMIC MINERALS

FILE REPORT No.

U-AF-017(2)

810 - 955 Marine Drive  
West Vancouver, B. C.  
December 19, 1969

Western Exploration Company, Limited  
775 - 555 Burrard Street  
Vancouver 1, B. C.

Dear Sirs,

Re: Ground Scintillometer Survey - Permits #43 and #45, Lake Athabasca

Two experienced men utilizing Scintrex Model BGS #IS Scintillometers were conducting a preliminary ground Scintillometer survey of Permits #43 and #45 from September 4th to September 15th, 1969.

The program was confined to the areas where anomalies had been picked up by a previous airborne radiometric survey. Lines across the formation were traversed at approximate 400' intervals.

The areas were found to be of high background, generally reading around 200 counts per second on the Scintrex machine. This high background is due to mass effect, the areas being high ridges of granitic rocks. Isolated readings up to 600 counts per second were obtained. However, no favourable geological structures or continuity was found with these odd high readings.

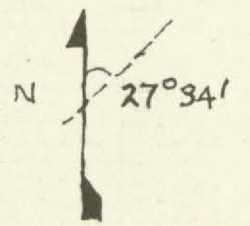
It is believed that the Permit areas were thoroughly investigated and that the cause of the airborne anomalies ascertained to be due to mass effect. No further radiometric surveys are recommended.

Respectfully submitted,



James D. Mason  
Professional Engineer



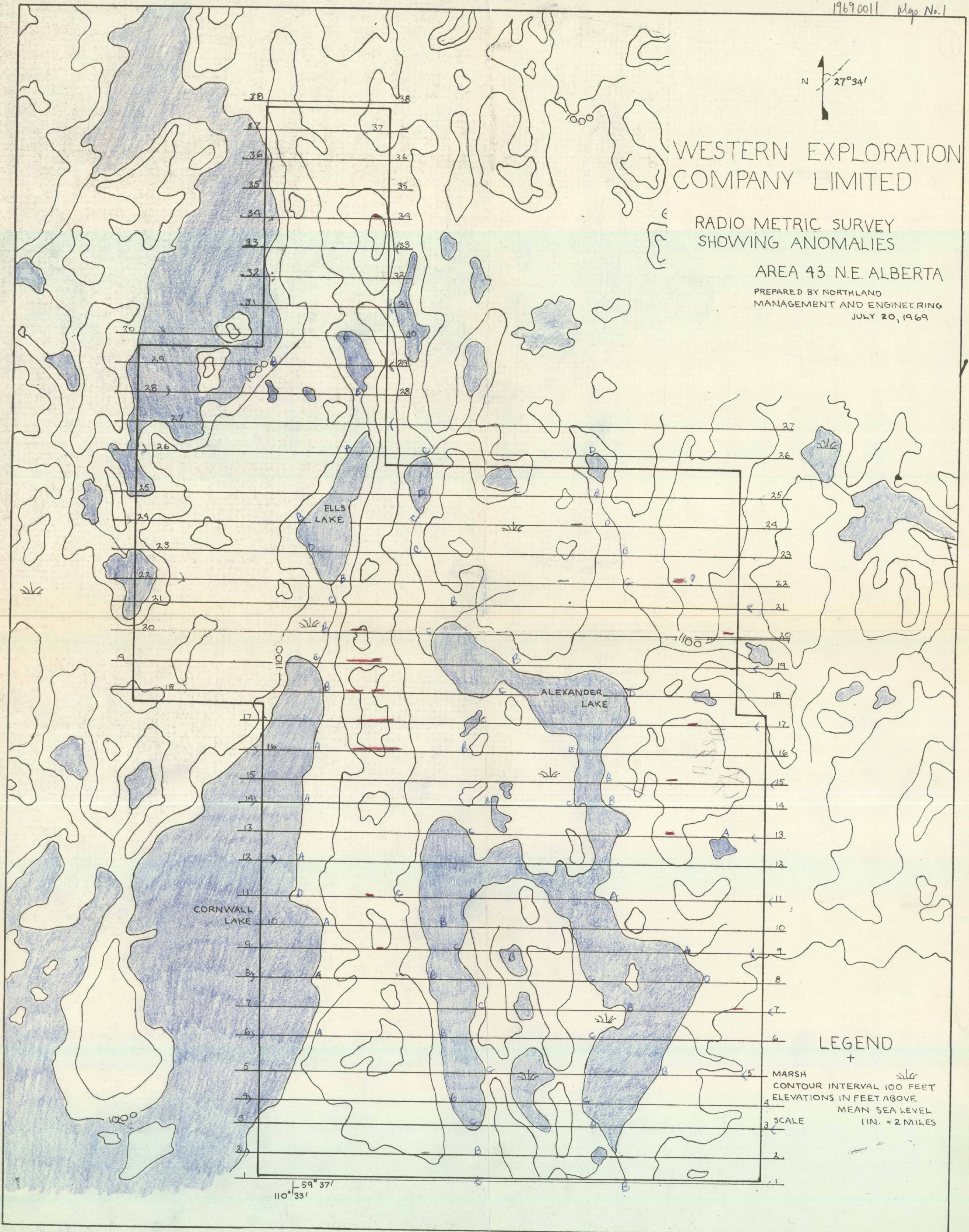


# WESTERN EXPLORATION COMPANY LIMITED

RADIO METRIC SURVEY  
SHOWING ANOMALIES

AREA 43 N.E. ALBERTA

PREPARED BY NORTHLAND  
MANAGEMENT AND ENGINEERING  
JULY 20, 1969



## LEGEND

MARSH  
 CONTOUR INTERVAL 100 FEET  
 ELEVATIONS IN FEET ABOVE  
 MEAN SEA LEVEL  
 SCALE 1 IN. = 2 MILES



INDIANAPOLIS, IND., U.S.A.

CHART NO. 4305-D

4 PM

~~10~~ ~~11~~ ~~12~~

10

11

3 PM

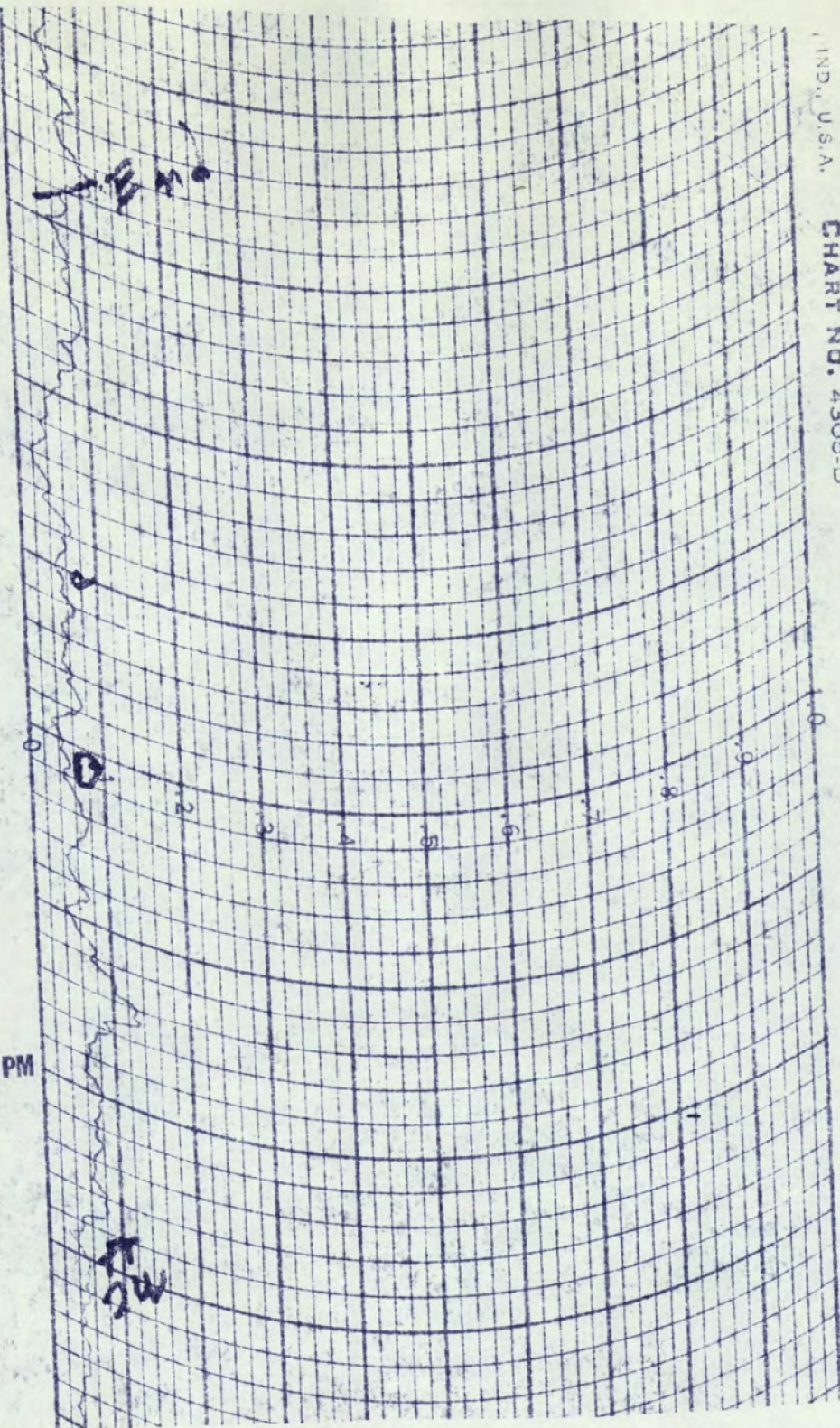
Line #1 East



10 PM

IND., U.S.A. CHART NO. 4305-D

9 PM





1  
←  
B md

10

11 PM

10

0 1 2 3 4 5 6 7 8 9 10

3 4 5 6 7 8 9 10

ESTERLINE ANGUS

INDIANA

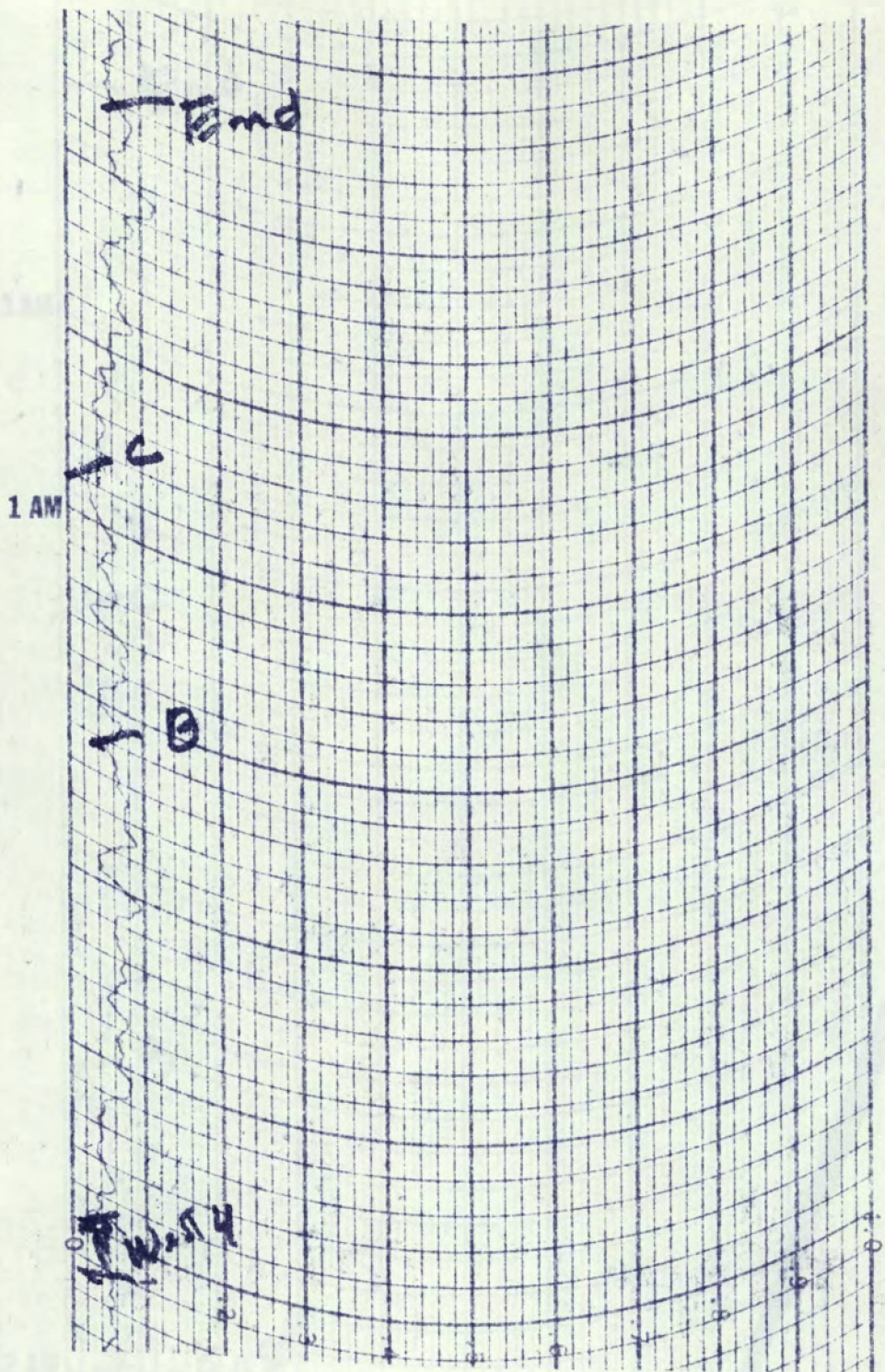


CE IN U.S.A.

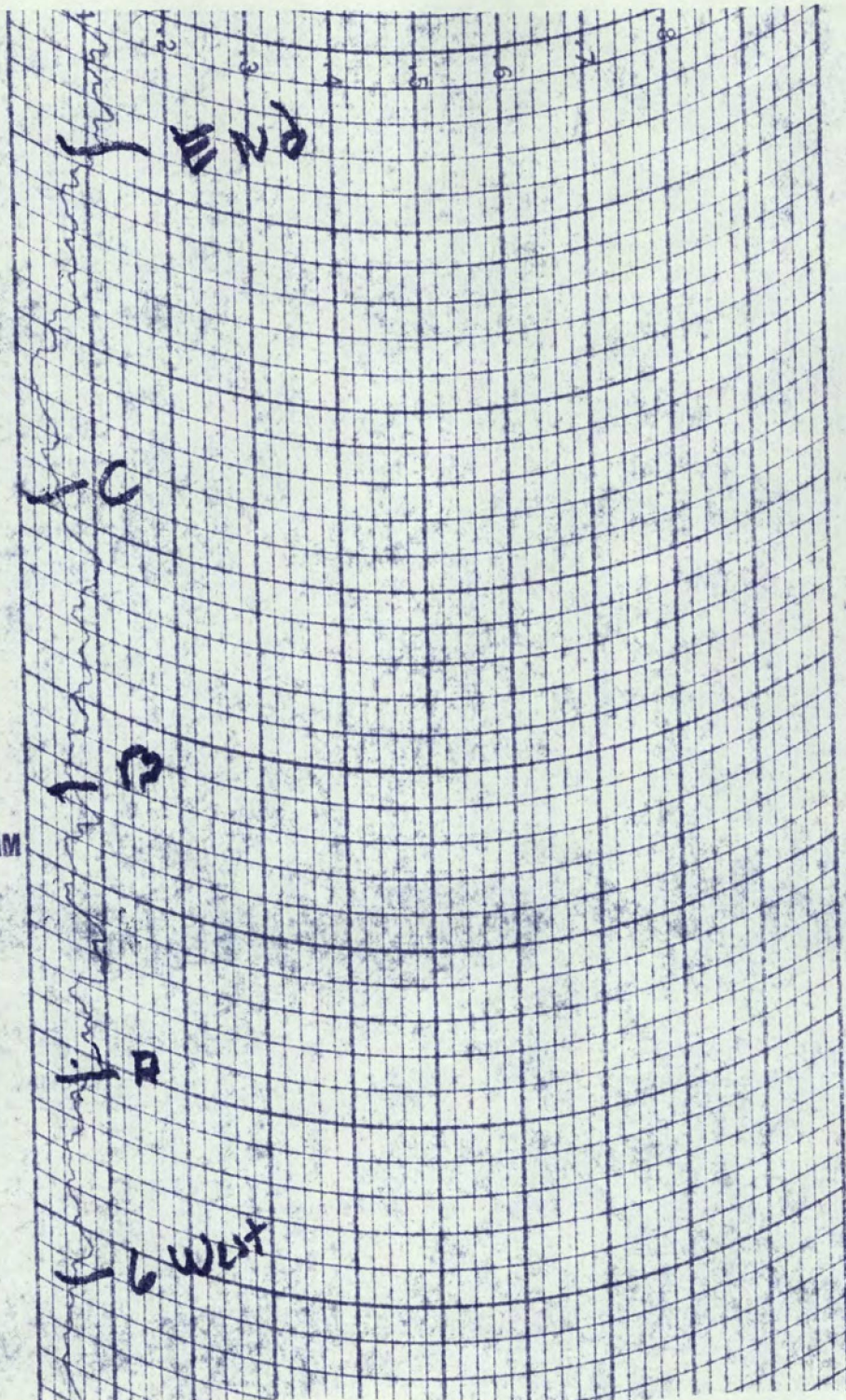
**ESTERLINE ANCOOS**

INDIANAPOLIS, IND., U.S.A.

.6.7.







ESTERLINE AIRCRAFTS

INDIANAPOLIS, IND., U.S.A.

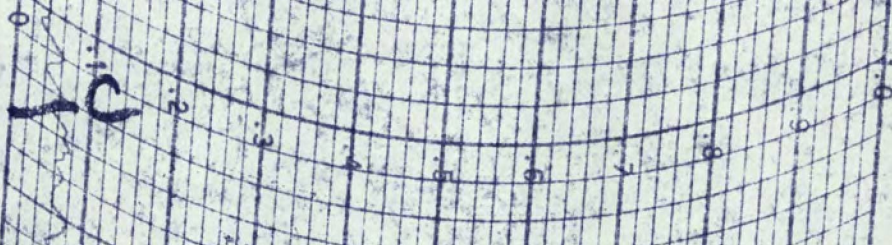
CHART NO. 4305-D



APOLIS, IND., U.S.A.

.6.7.

1 E 2

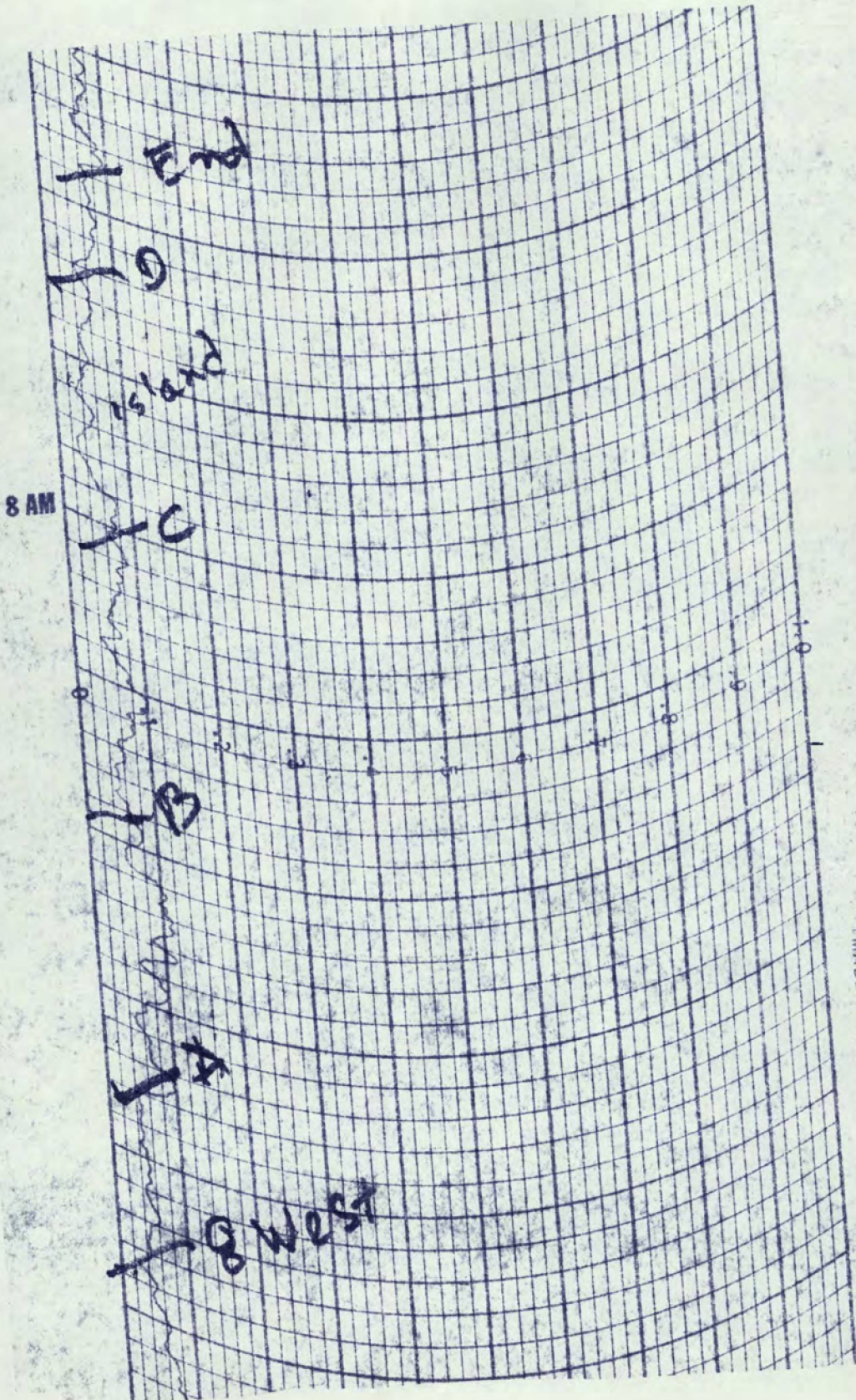


6 AM

1 B

1 A 2 1





MADE IN U.S.A.

ESTERLINE



ESTERLINE ANGLUS

INDIANAPOLIS, IND., U.S.A.

CHART NO. 4305-D

10 AM

9 AM

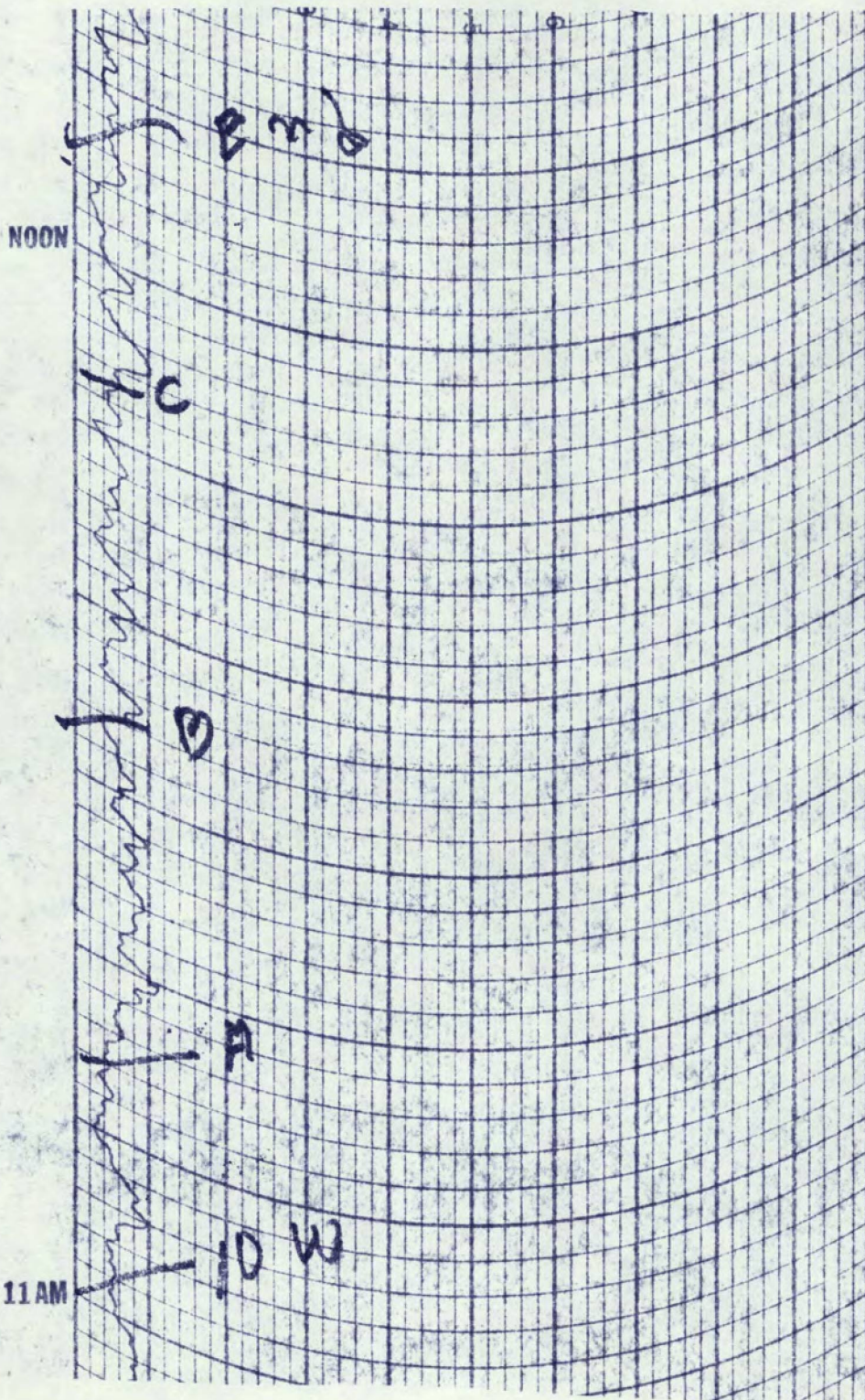
End  
Late

C

B

12  
11  
10  
9  
8  
7  
6  
5  
4  
3  
2  
1  
0







2 PM

E-10

P

B

1 PM

17  
11E-06

MADE IN U.S.A.

ESTERLINE ZINGUS

INDIANAPOLIS, IND



JS

INDIANAPOLIS, IND., U.S.A.

CHART NO. 4305-D

4 PM

End

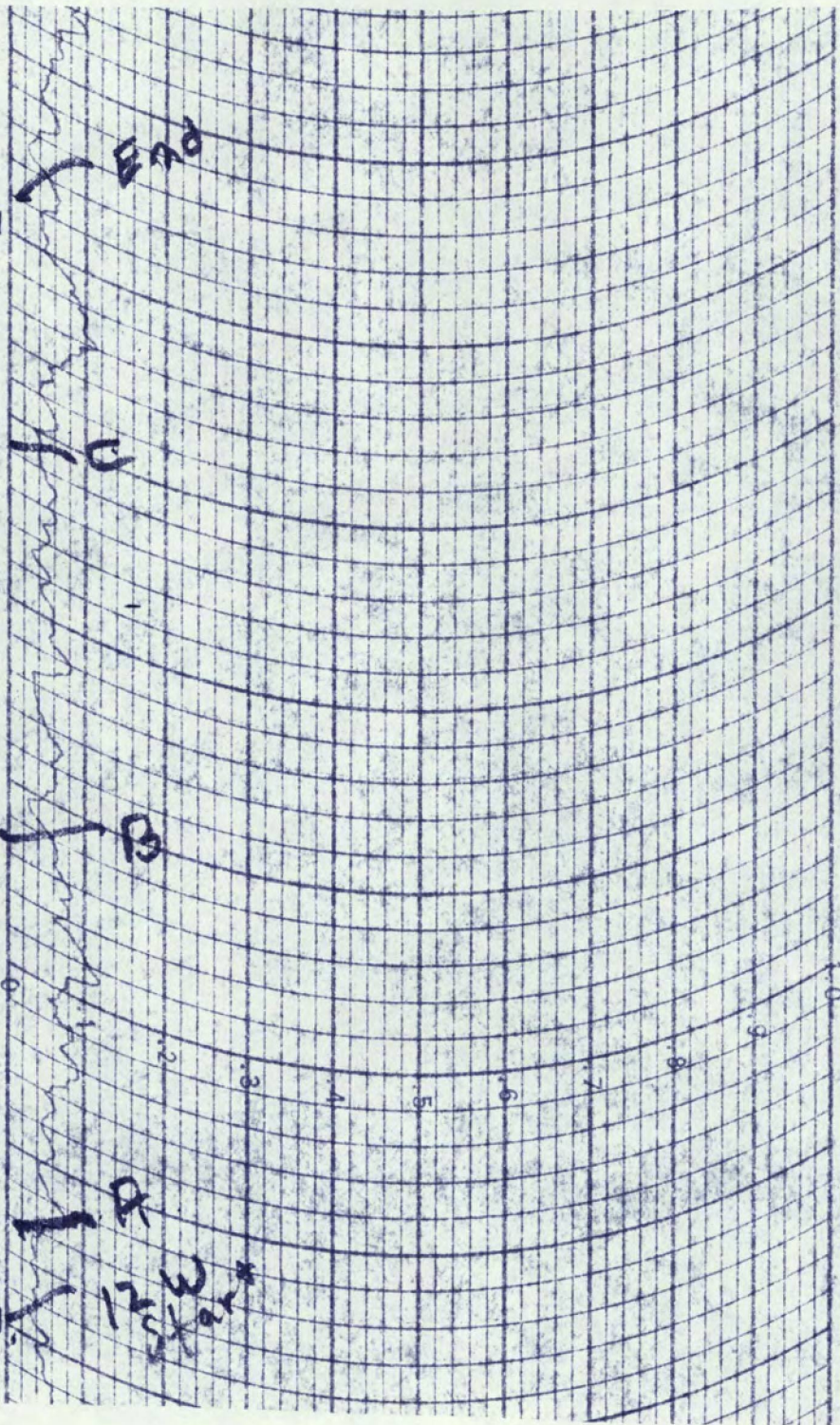
10

10

3 PM

10

12 W  
Start





6 PM

Emb

Lak

C

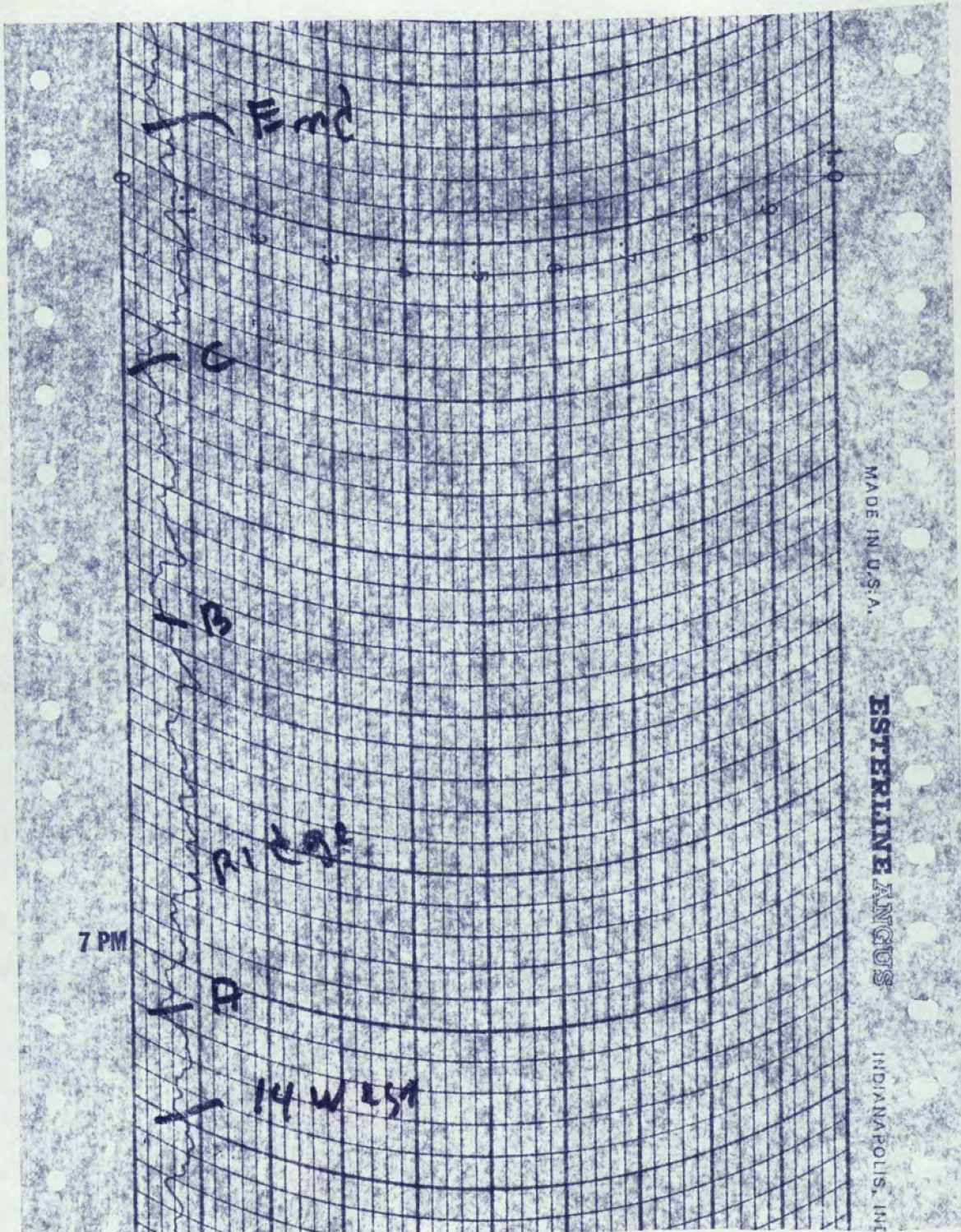
B

5 PM

Lak

13 East







ANAPOLIS, IND., U.S.A. CHART NO. 4305-D

10 PM

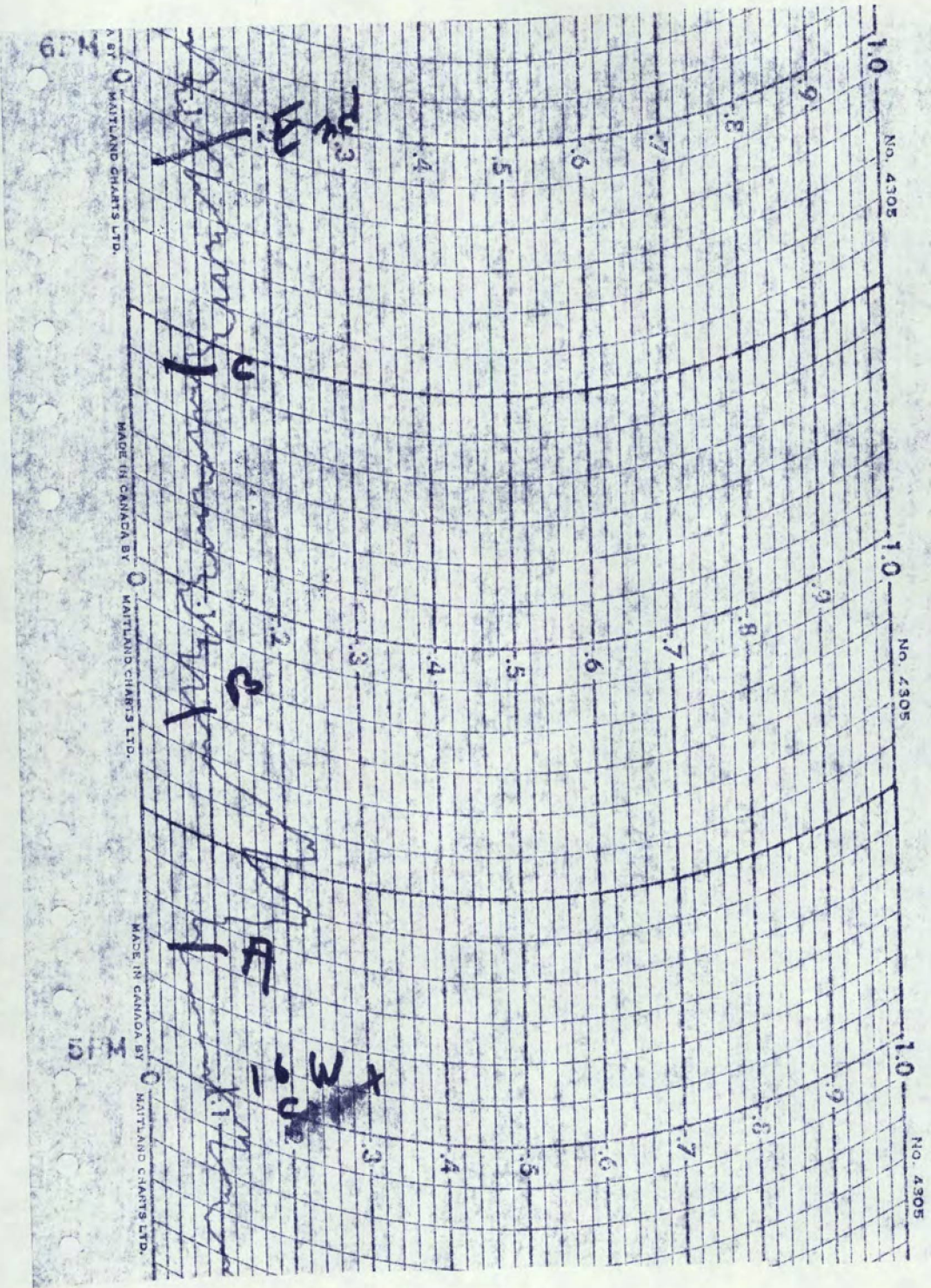
E-2  
L-1

9 PM

B

15 East 1st





MADE IN CANADA BY  
WATLAND CHARTS LTD.

MADE IN CANADA BY  
WATLAND CHARTS LTD.

MADE IN CANADA BY  
WATLAND CHARTS LTD.

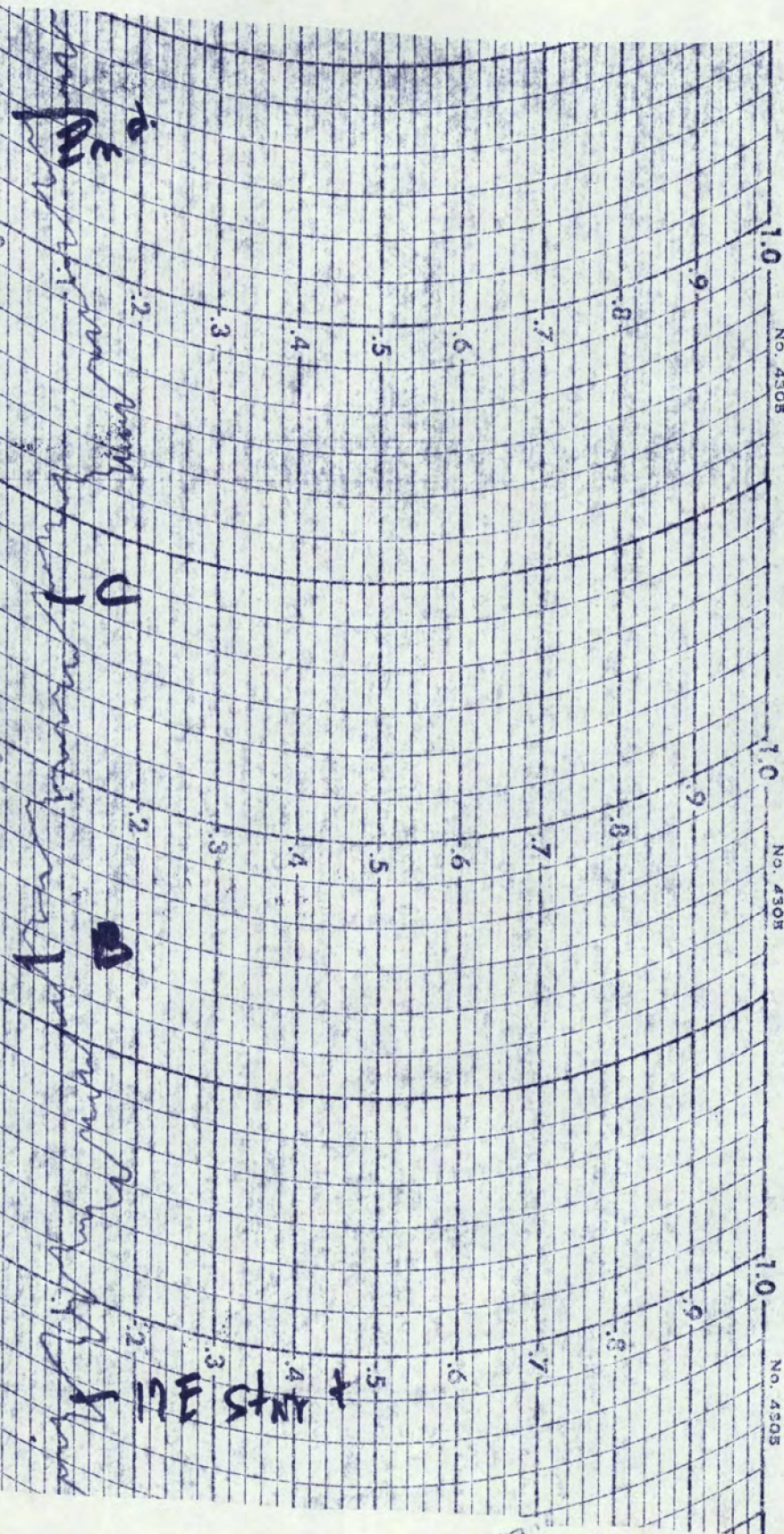


MADE IN CANADA BY MAILAND CHARTS LTD.

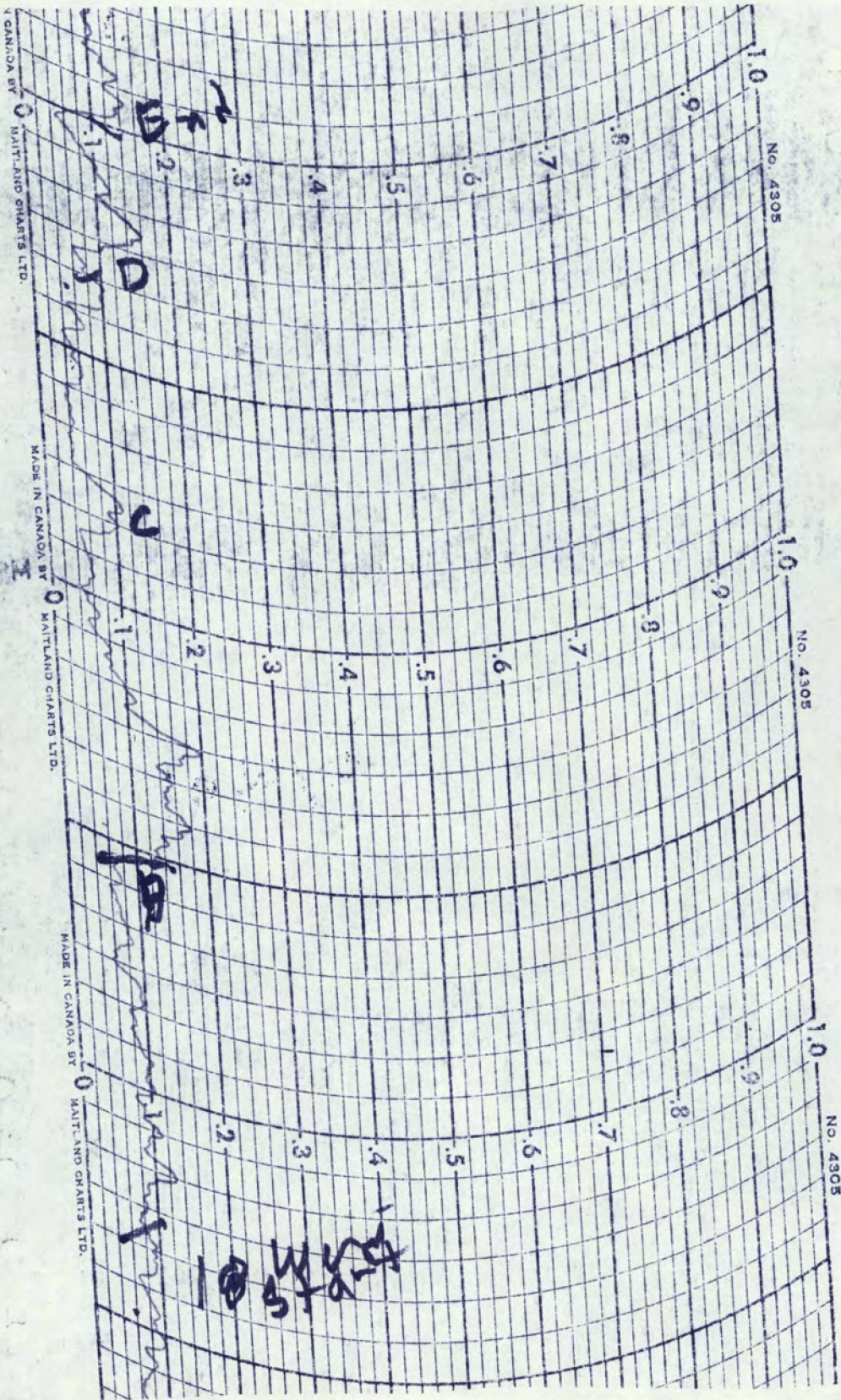
MADE IN CANADA BY MAILAND CHARTS LTD.

MADE IN CANADA BY MAILAND CHARTS LTD.

7PM









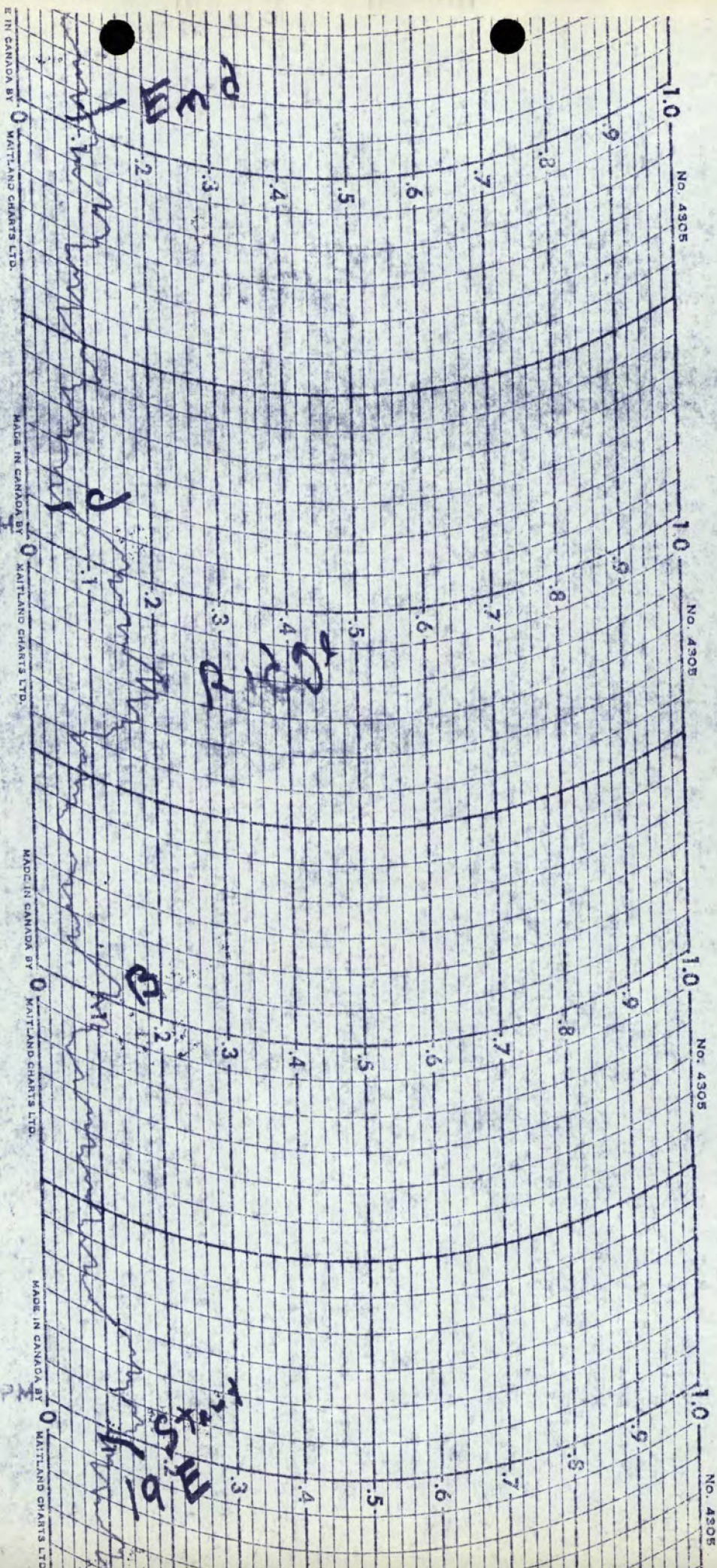
MADE IN CANADA BY MAILAND CHARTS LTD.

MADE IN CANADA BY MAILAND CHARTS LTD.

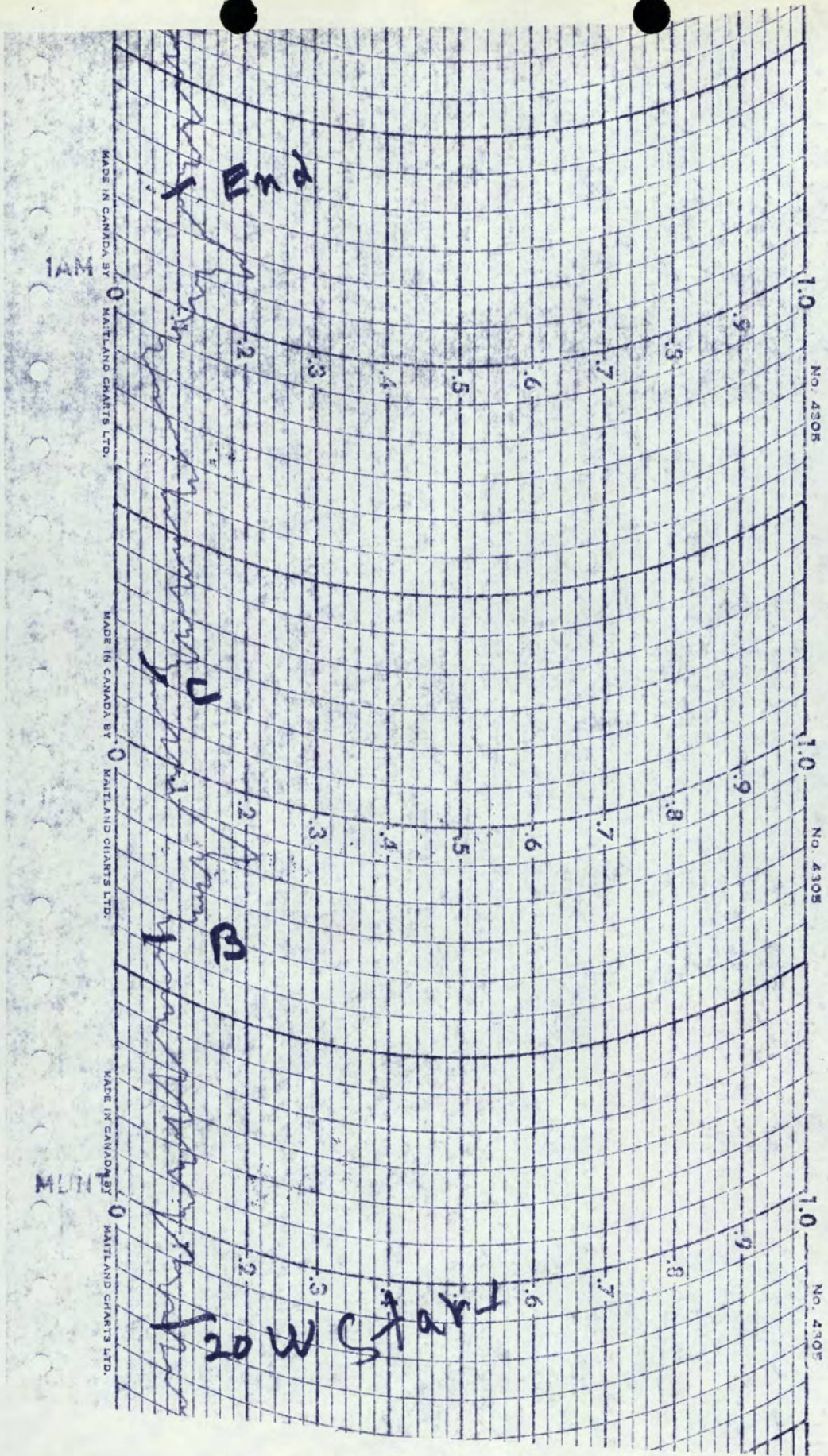
MADE IN CANADA BY MAILAND CHARTS LTD.

MADE IN CANADA BY MAILAND CHARTS LTD.

10PM







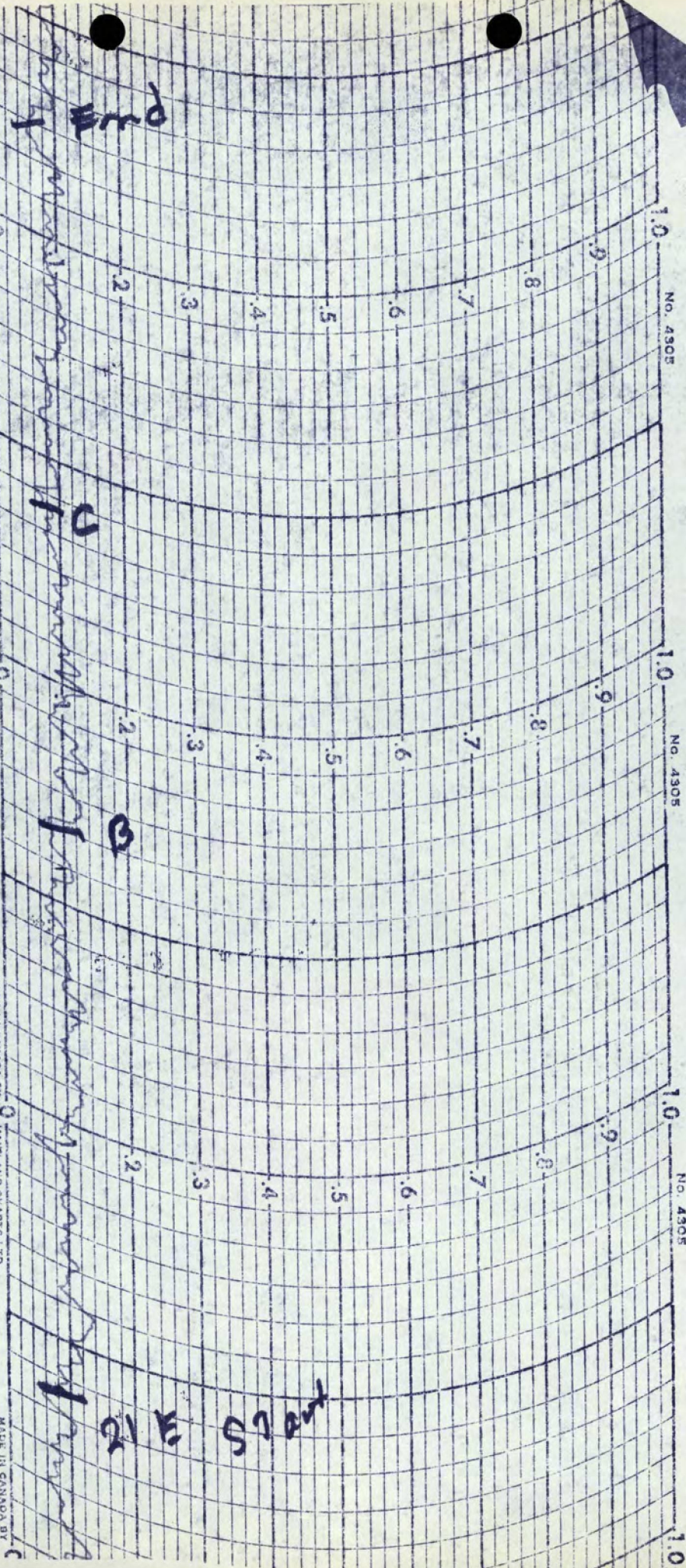


MADE IN CANADA BY Maitland Charts Ltd.

MADE IN CANADA BY Maitland Charts Ltd.

MADE IN CANADA BY Maitland Charts Ltd.

MADE IN CANADA BY Maitland Charts Ltd.



End

21 E 57 ant

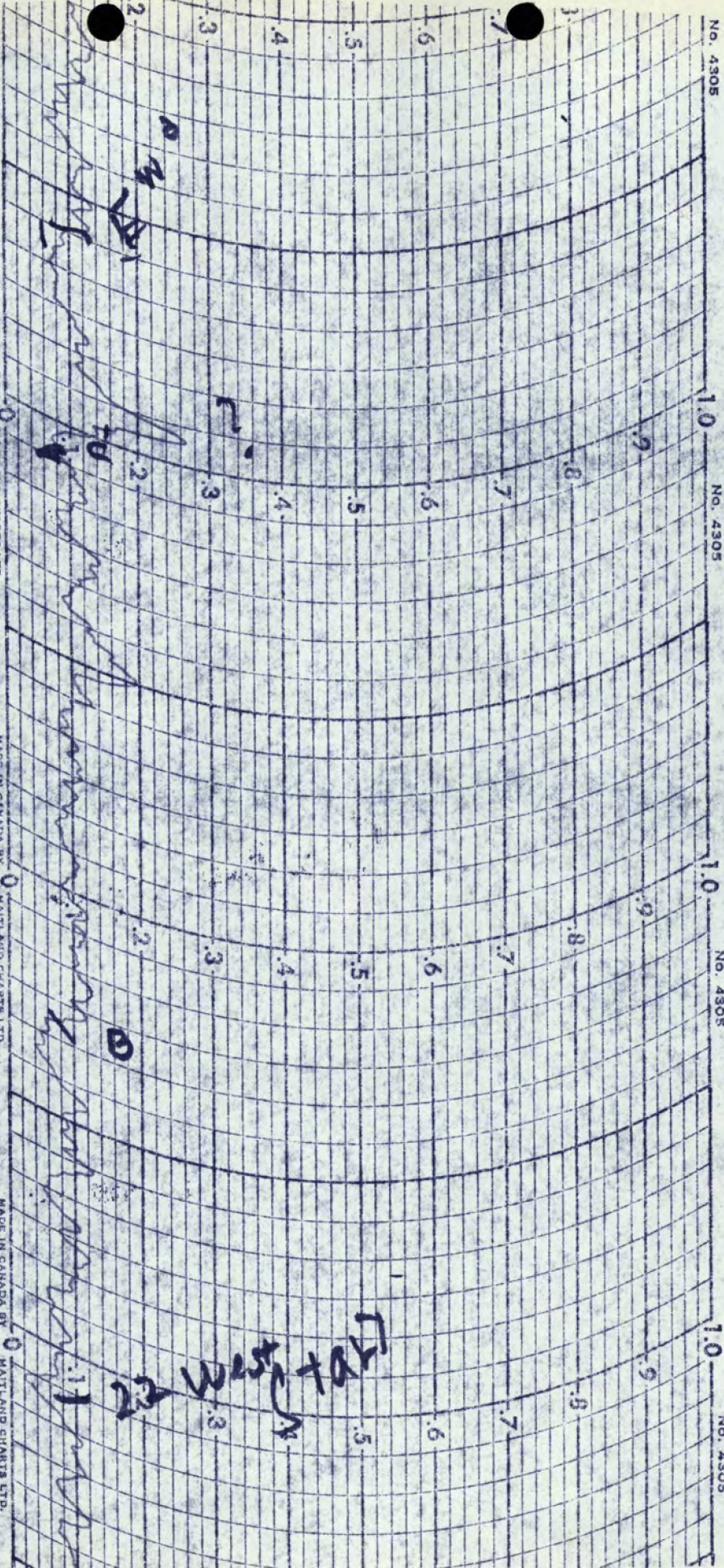


NO. 4305

MADE IN CANADA BY MATLAND CHARTS LTD.

MADE IN CANADA BY MATLAND CHARTS LTD.

MADE IN CANADA BY MATLAND CHARTS LTD.





7AM

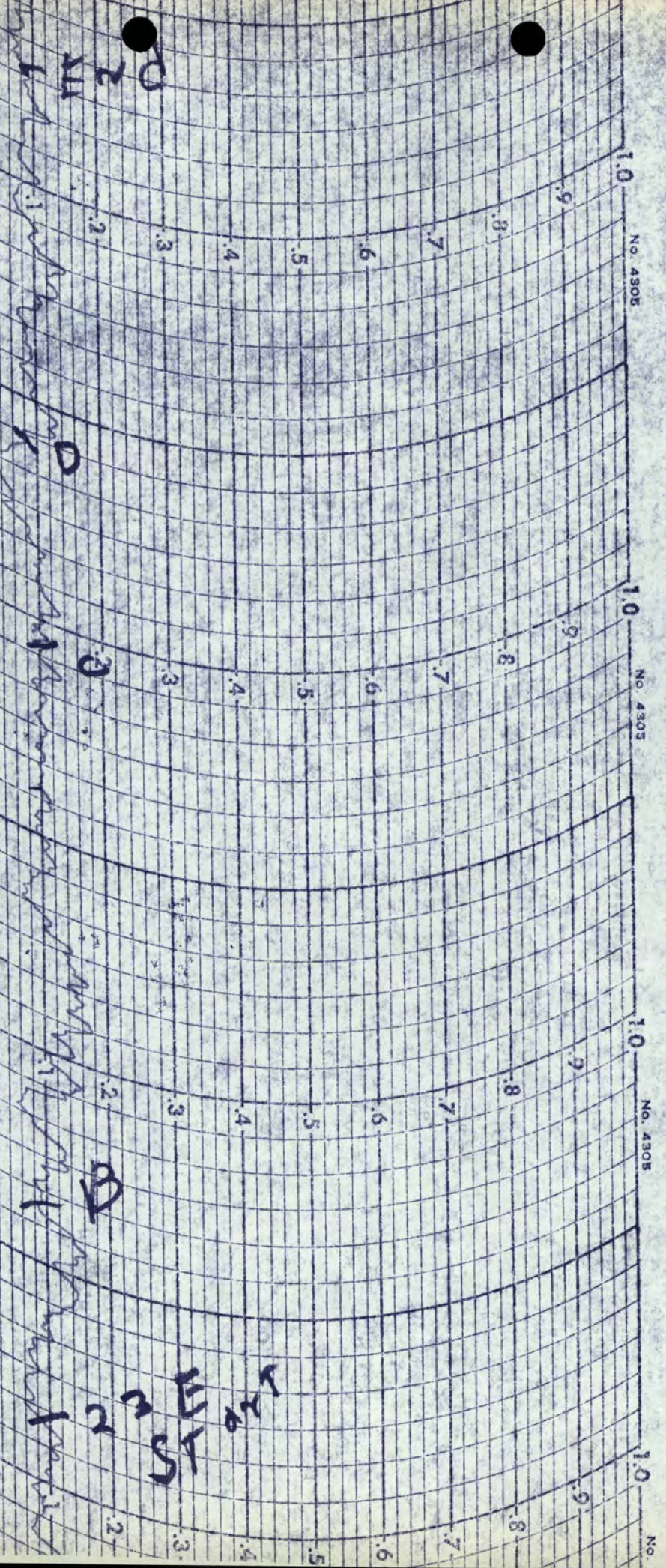
MADE IN CANADA BY HAITLAND CHARTS LTD.

MADE IN CANADA BY HAITLAND CHARTS LTD.

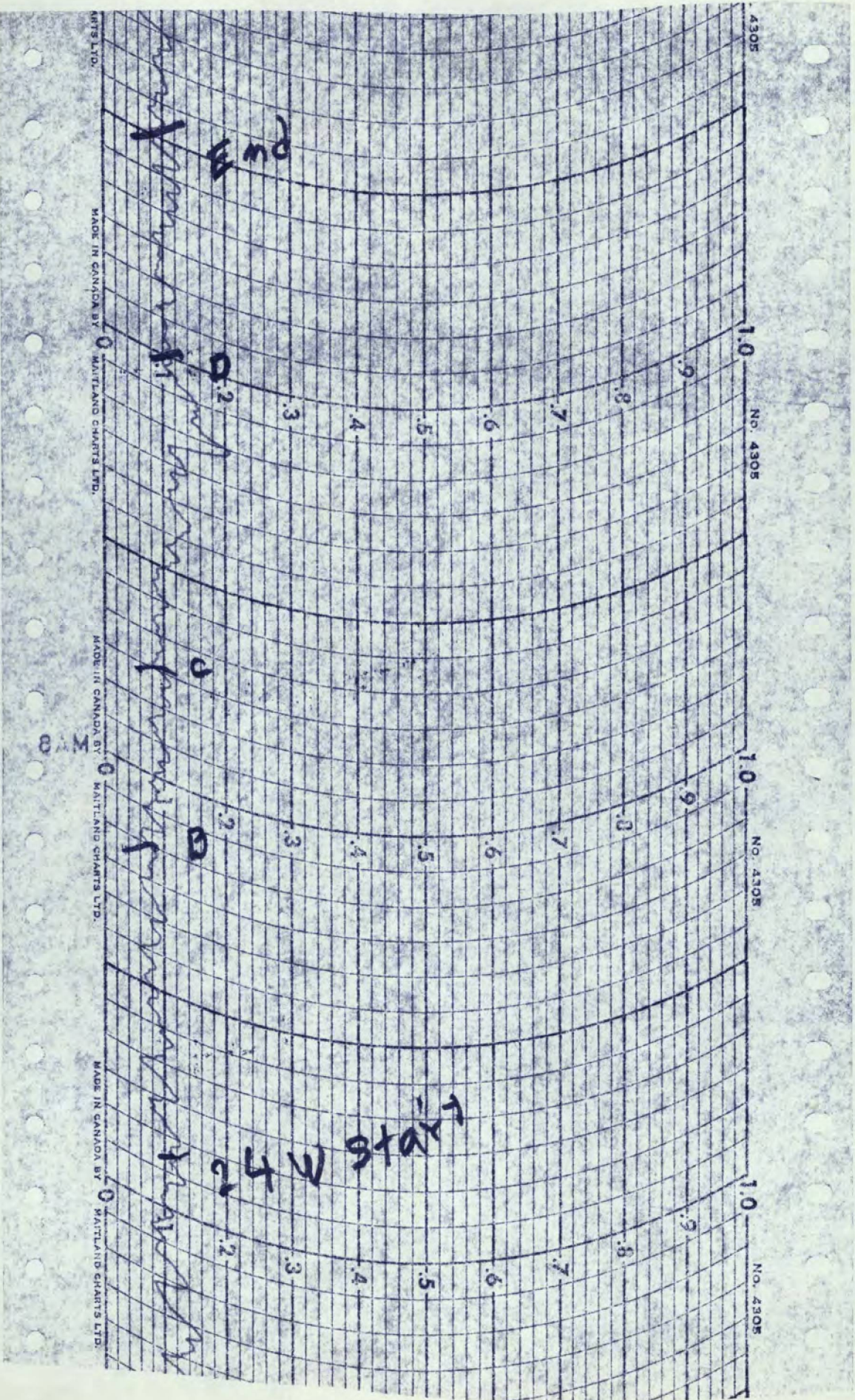
MADE IN CANADA BY HAITLAND CHARTS LTD.

6AM

MADE IN CANADA BY HAITLAND







MADE IN CANADA BY MATTLAND CHARTS LTD. MADE IN CANADA BY MATTLAND CHARTS LTD. MADE IN CANADA BY MATTLAND CHARTS LTD.

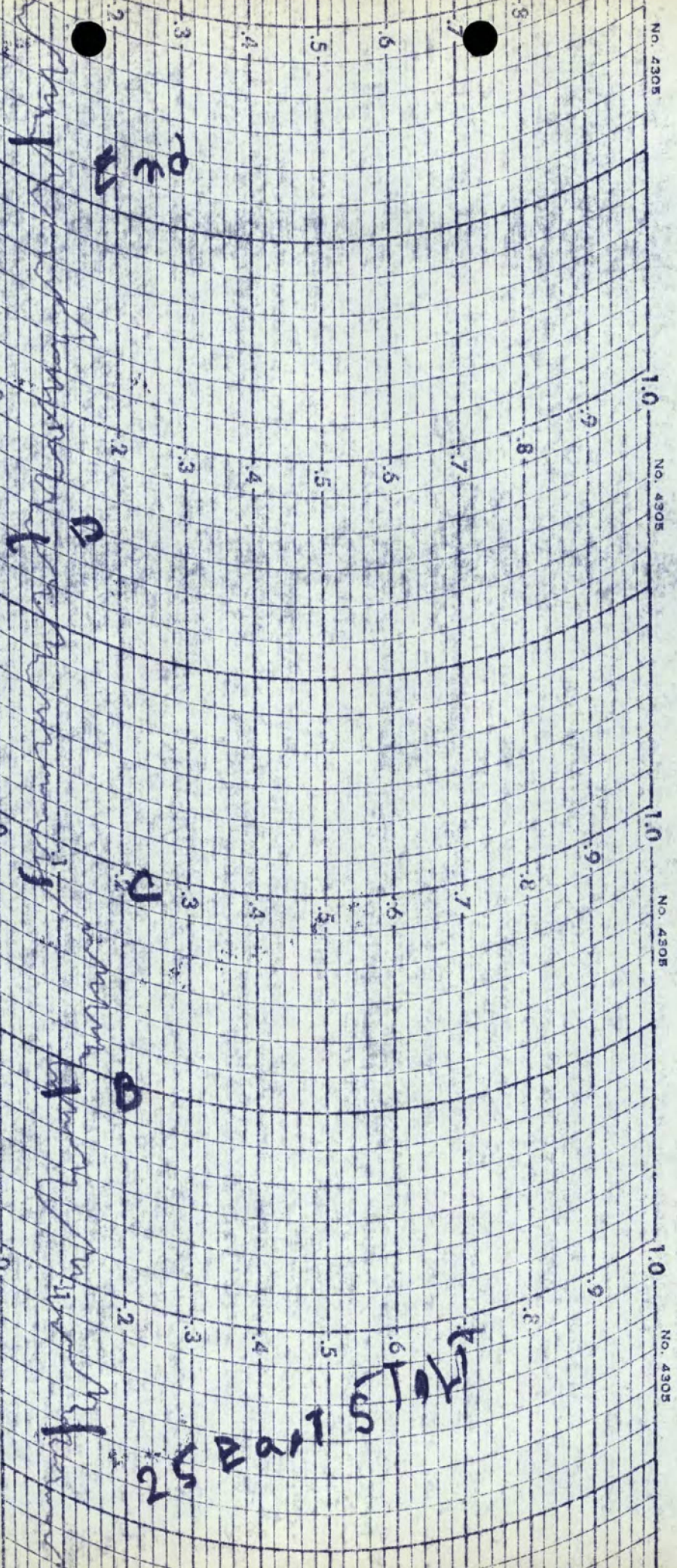


LAND CHARTS LTD.

MADE IN CANADA BY NAITLAND CHARTS LTD.

MADE IN CANADA BY NAITLAND CHARTS LTD.

MADE IN CANADA BY NAITLAND CHARTS LTD.



25 East 50W



No. 4305

No. 4305

No. 4305

No. 4305

CHARTS LTD.

MADE IN CANADA BY

NAITLAND CHARTS LTD.

MADE IN CANADA BY

NAITLAND CHARTS LTD.

MADE IN CANADA BY

NAITLAND CHARTS LTD.

E 20

0

2

0

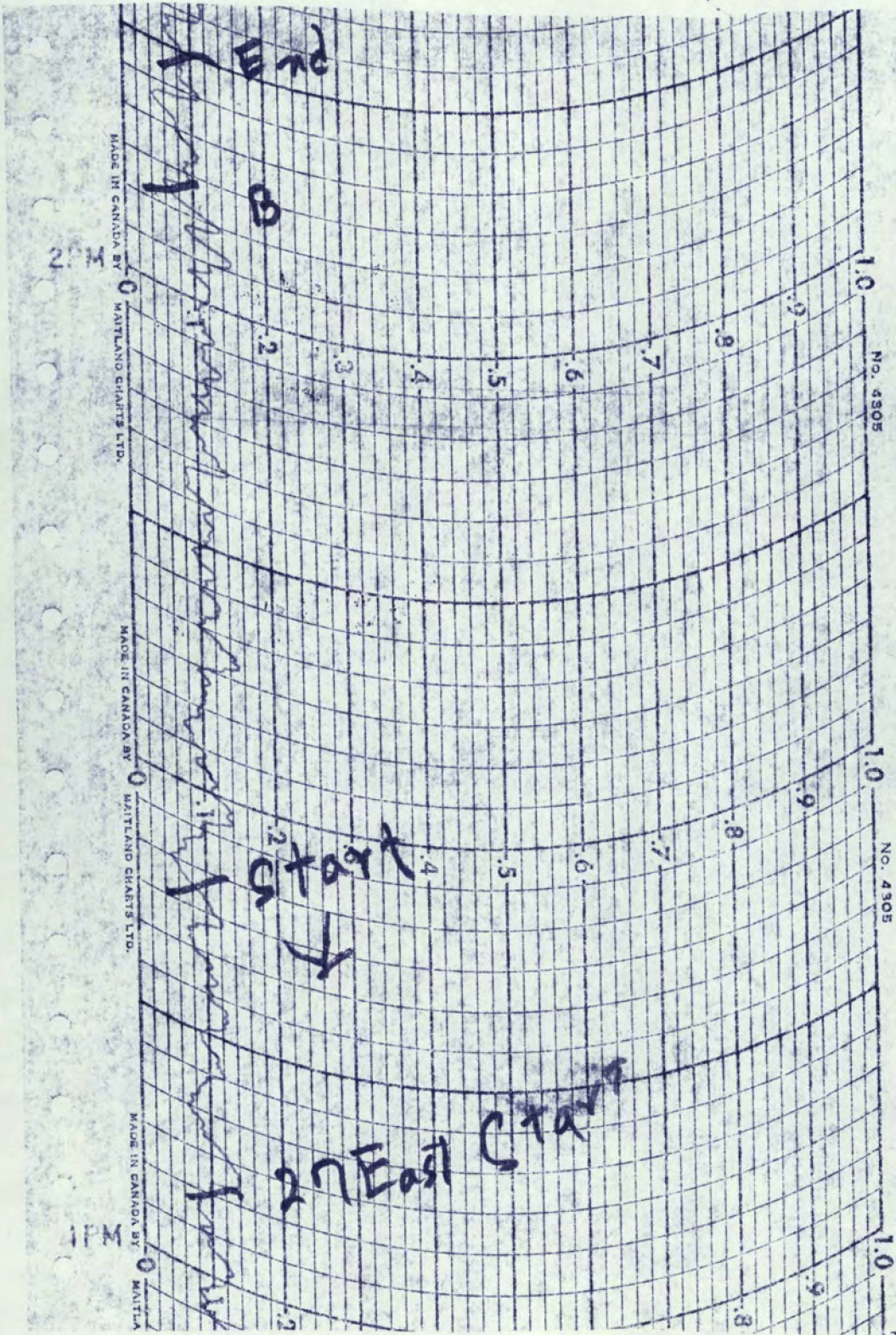
0

2

0

26 West of

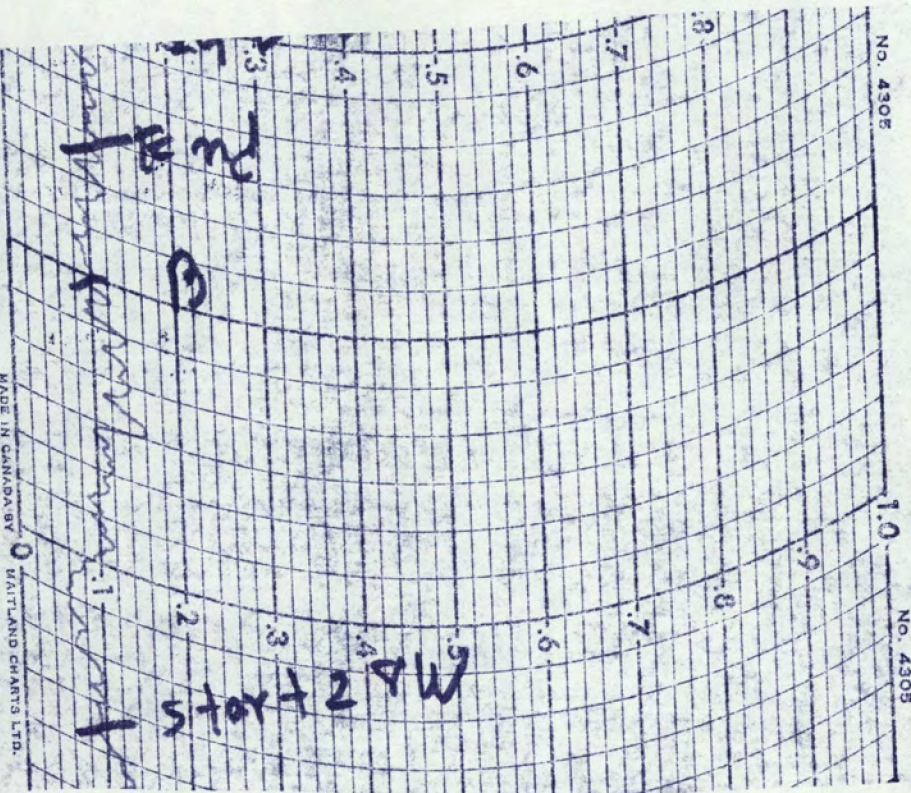




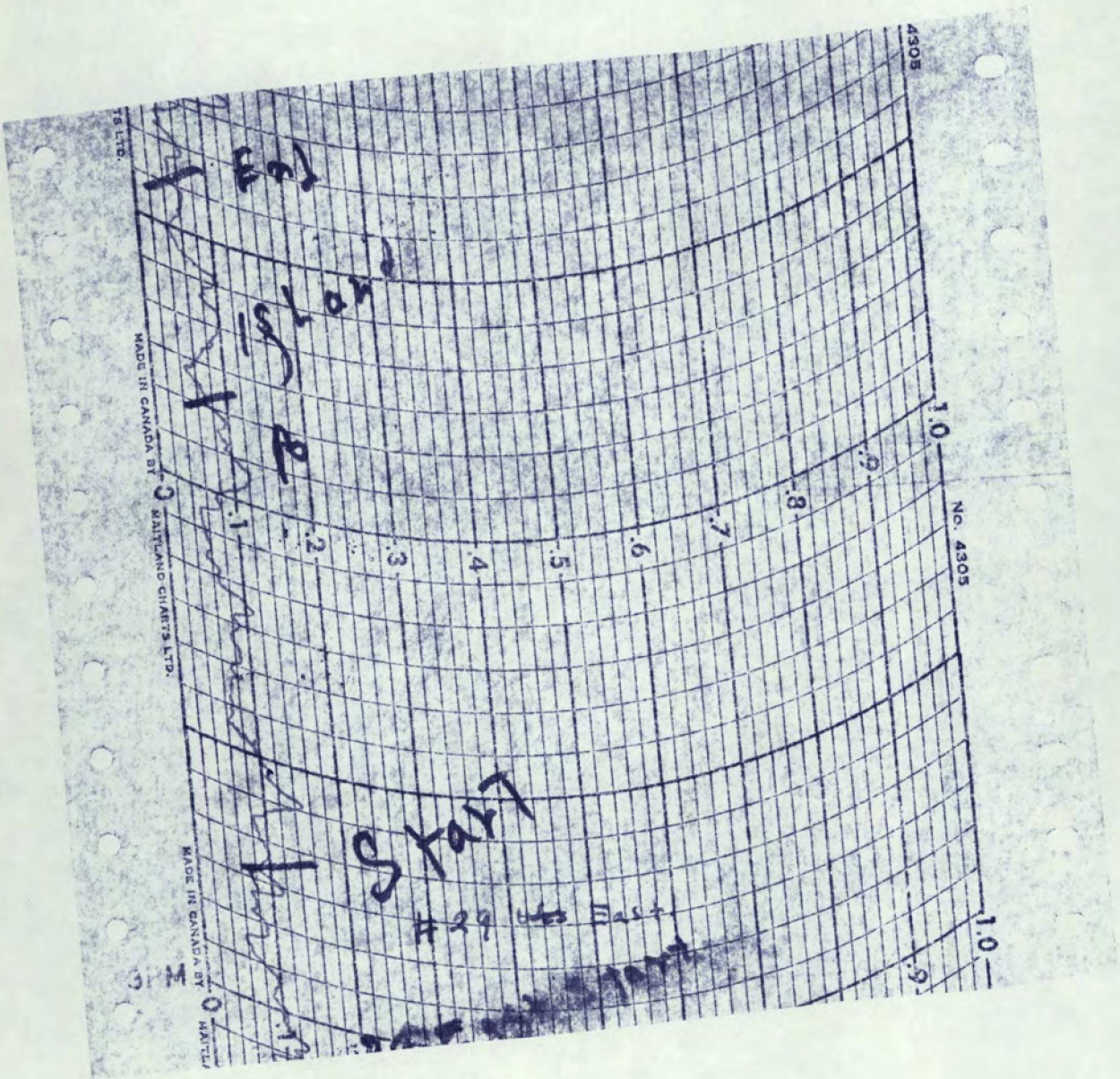


NO. 4305

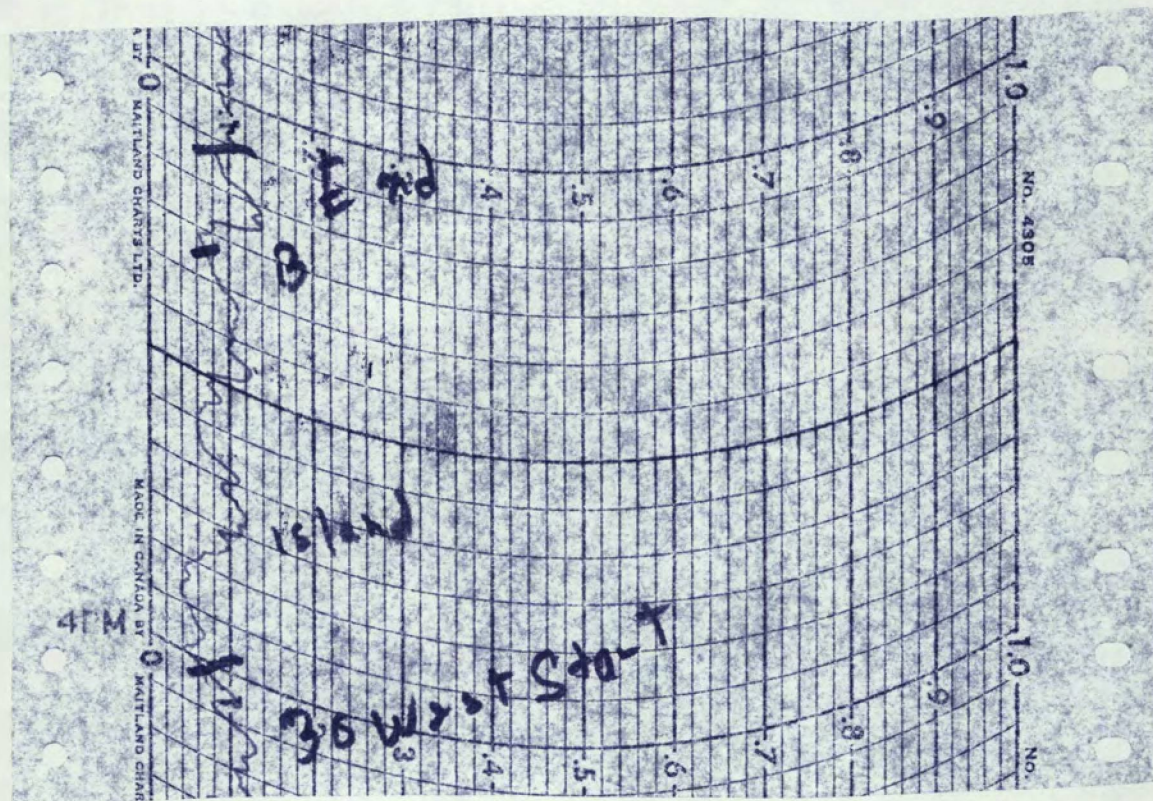
MADE IN CANADA BY HAITLAND CHARTS LTD.



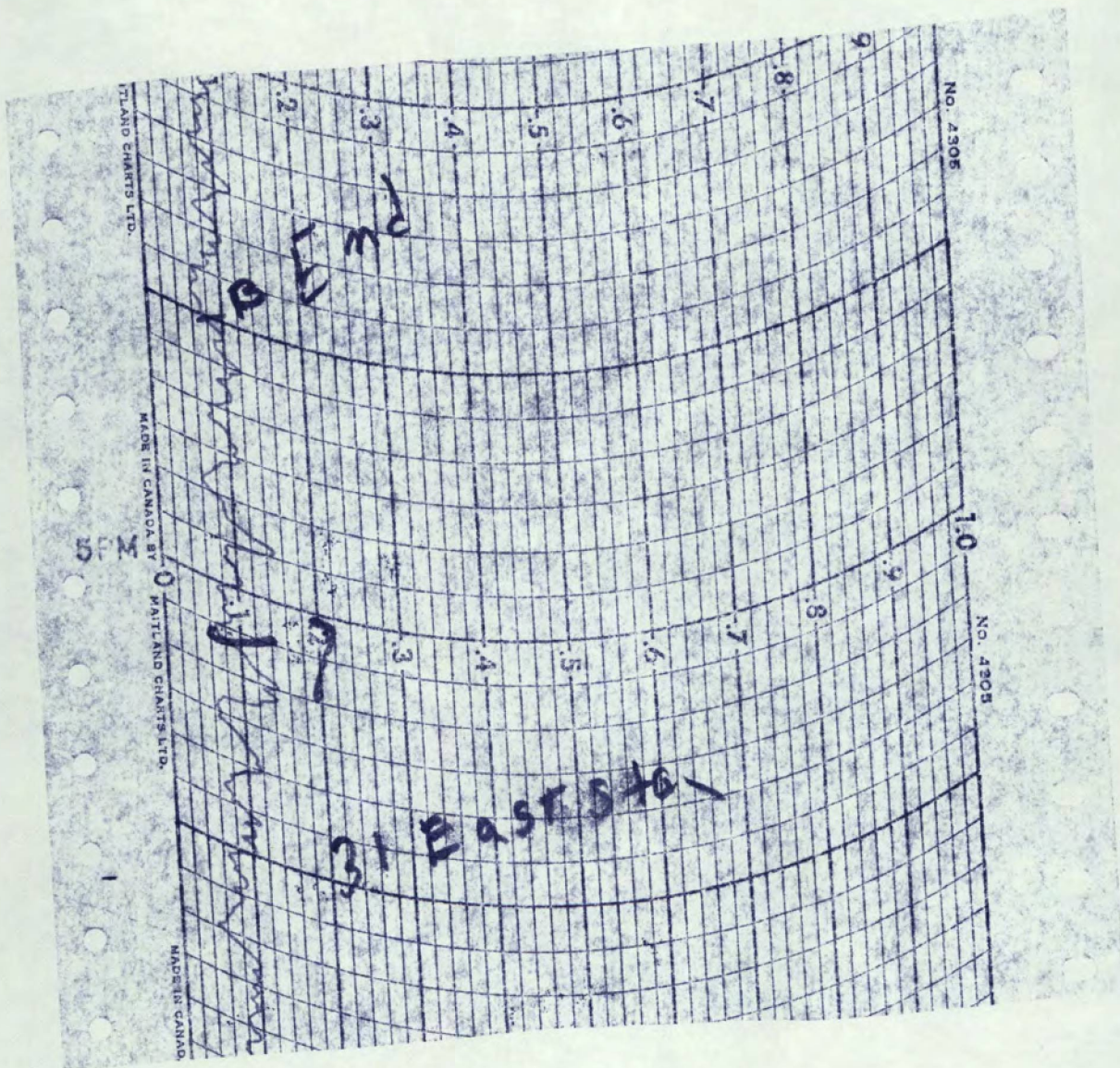




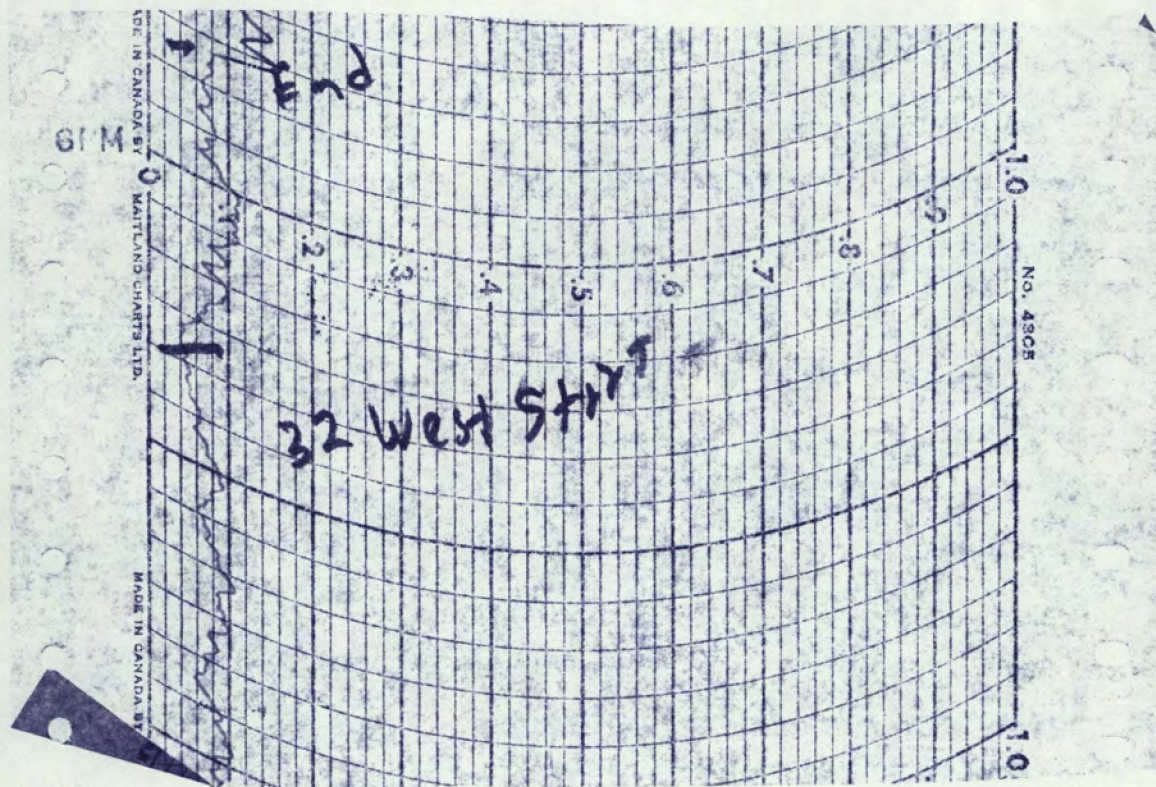




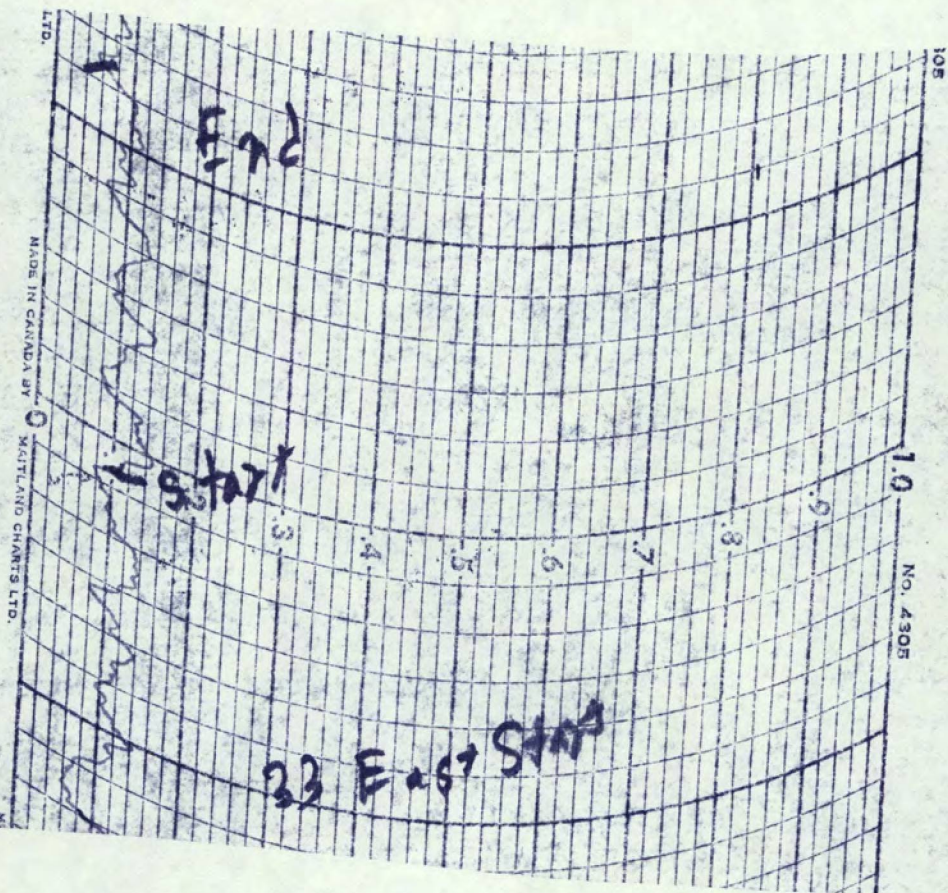




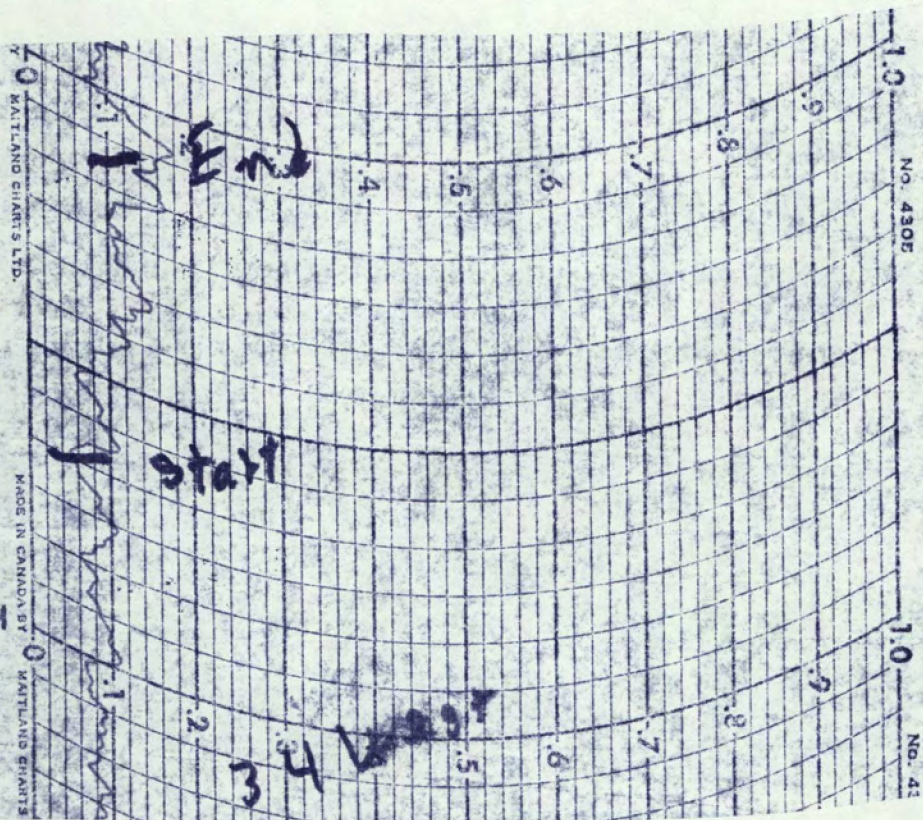














4305

No. 4305

En d

5th yr

35 East

5. 6. 7. 8. 9. 10. 11. 12. 13. 14. 15. 16. 17. 18. 19. 20. 21. 22. 23. 24. 25. 26. 27. 28. 29. 30. 31. 32. 33. 34. 35. 36. 37. 38. 39. 40. 41. 42. 43. 44. 45. 46. 47. 48. 49. 50. 51. 52. 53. 54. 55. 56. 57. 58. 59. 60. 61. 62. 63. 64. 65. 66. 67. 68. 69. 70. 71. 72. 73. 74. 75. 76. 77. 78. 79. 80. 81. 82. 83. 84. 85. 86. 87. 88. 89. 90. 91. 92. 93. 94. 95. 96. 97. 98. 99. 100. 101. 102. 103. 104. 105. 106. 107. 108. 109. 110. 111. 112. 113. 114. 115. 116. 117. 118. 119. 120. 121. 122. 123. 124. 125. 126. 127. 128. 129. 130. 131. 132. 133. 134. 135. 136. 137. 138. 139. 140. 141. 142. 143. 144. 145. 146. 147. 148. 149. 150. 151. 152. 153. 154. 155. 156. 157. 158. 159. 160. 161. 162. 163. 164. 165. 166. 167. 168. 169. 170. 171. 172. 173. 174. 175. 176. 177. 178. 179. 180. 181. 182. 183. 184. 185. 186. 187. 188. 189. 190. 191. 192. 193. 194. 195. 196. 197. 198. 199. 200. 201. 202. 203. 204. 205. 206. 207. 208. 209. 210. 211. 212. 213. 214. 215. 216. 217. 218. 219. 220. 221. 222. 223. 224. 225. 226. 227. 228. 229. 230. 231. 232. 233. 234. 235. 236. 237. 238. 239. 240. 241. 242. 243. 244. 245. 246. 247. 248. 249. 250. 251. 252. 253. 254. 255. 256. 257. 258. 259. 260. 261. 262. 263. 264. 265. 266. 267. 268. 269. 270. 271. 272. 273. 274. 275. 276. 277. 278. 279. 280. 281. 282. 283. 284. 285. 286. 287. 288. 289. 290. 291. 292. 293. 294. 295. 296. 297. 298. 299. 300. 301. 302. 303. 304. 305. 306. 307. 308. 309. 310. 311. 312. 313. 314. 315. 316. 317. 318. 319. 320. 321. 322. 323. 324. 325. 326. 327. 328. 329. 330. 331. 332. 333. 334. 335. 336. 337. 338. 339. 340. 341. 342. 343. 344. 345. 346. 347. 348. 349. 350. 351. 352. 353. 354. 355. 356. 357. 358. 359. 360. 361. 362. 363. 364. 365. 366. 367. 368. 369. 370. 371. 372. 373. 374. 375. 376. 377. 378. 379. 380. 381. 382. 383. 384. 385. 386. 387. 388. 389. 390. 391. 392. 393. 394. 395. 396. 397. 398. 399. 400. 401. 402. 403. 404. 405. 406. 407. 408. 409. 410. 411. 412. 413. 414. 415. 416. 417. 418. 419. 420. 421. 422. 423. 424. 425. 426. 427. 428. 429. 430. 431. 432. 433. 434. 435. 436. 437. 438. 439. 440. 441. 442. 443. 444. 445. 446. 447. 448. 449. 450. 451. 452. 453. 454. 455. 456. 457. 458. 459. 460. 461. 462. 463. 464. 465. 466. 467. 468. 469. 470. 471. 472. 473. 474. 475. 476. 477. 478. 479. 480. 481. 482. 483. 484. 485. 486. 487. 488. 489. 490. 491. 492. 493. 494. 495. 496. 497. 498. 499. 500. 501. 502. 503. 504. 505. 506. 507. 508. 509. 510. 511. 512. 513. 514. 515. 516. 517. 518. 519. 520. 521. 522. 523. 524. 525. 526. 527. 528. 529. 530. 531. 532. 533. 534. 535. 536. 537. 538. 539. 540. 541. 542. 543. 544. 545. 546. 547. 548. 549. 550. 551. 552. 553. 554. 555. 556. 557. 558. 559. 560. 561. 562. 563. 564. 565. 566. 567. 568. 569. 570. 571. 572. 573. 574. 575. 576. 577. 578. 579. 580. 581. 582. 583. 584. 585. 586. 587. 588. 589. 590. 591. 592. 593. 594. 595. 596. 597. 598. 599. 600. 601. 602. 603. 604. 605. 606. 607. 608. 609. 610. 611. 612. 613. 614. 615. 616. 617. 618. 619. 620. 621. 622. 623. 624. 625. 626. 627. 628. 629. 630. 631. 632. 633. 634. 635. 636. 637. 638. 639. 640. 641. 642. 643. 644. 645. 646. 647. 648. 649. 650. 651. 652. 653. 654. 655. 656. 657. 658. 659. 660. 661. 662. 663. 664. 665. 666. 667. 668. 669. 670. 671. 672. 673. 674. 675. 676. 677. 678. 679. 680. 681. 682. 683. 684. 685. 686. 687. 688. 689. 690. 691. 692. 693. 694. 695. 696. 697. 698. 699. 700. 701. 702. 703. 704. 705. 706. 707. 708. 709. 710. 711. 712. 713. 714. 715. 716. 717. 718. 719. 720. 721. 722. 723. 724. 725. 726. 727. 728. 729. 730. 731. 732. 733. 734. 735. 736. 737. 738. 739. 740. 741. 742. 743. 744. 745. 746. 747. 748. 749. 750. 751. 752. 753. 754. 755. 756. 757. 758. 759. 760. 761. 762. 763. 764. 765. 766. 767. 768. 769. 770. 771. 772. 773. 774. 775. 776. 777. 778. 779. 780. 781. 782. 783. 784. 785. 786. 787. 788. 789. 790. 791. 792. 793. 794. 795. 796. 797. 798. 799. 800. 801. 802. 803. 804. 805. 806. 807. 808. 809. 810. 811. 812. 813. 814. 815. 816. 817. 818. 819. 820. 821. 822. 823. 824. 825. 826. 827. 828. 829. 830. 831. 832. 833. 834. 835. 836. 837. 838. 839. 840. 841. 842. 843.

MADE IN CANADA BY

017 5111111

8PM

MADE IN CANADA



