

MAR 20150001: ERITH TIE

Received date: February 06, 2015

Public release date: January 11, 2016

DISCLAIMER

By accessing and using the Alberta Energy website to download or otherwise obtain a scanned mineral assessment report, you ("User") agree to be bound by the following terms and conditions:

- a) Each scanned mineral assessment report that is downloaded or otherwise obtained from Alberta Energy is provided "AS IS", with no warranties or representations of any kind whatsoever from Her Majesty the Queen in Right of Alberta, as represented by the Minister of Energy ("Minister"), expressed or implied, including, but not limited to, no warranties or other representations from the Minister, regarding the content, accuracy, reliability, use or results from the use of or the integrity, completeness, quality or legibility of each such scanned mineral assessment report;
- b) To the fullest extent permitted by applicable laws, the Minister hereby expressly disclaims, and is released from, liability and responsibility for all warranties and conditions, expressed or implied, in relation to each scanned mineral assessment report shown or displayed on the Alberta Energy website including but not limited to warranties as to the satisfactory quality of or the fitness of the scanned mineral assessment report for a particular purpose and warranties as to the non-infringement or other non-violation of the proprietary rights held by any third party in respect of the scanned mineral assessment report;
- c) To the fullest extent permitted by applicable law, the Minister, and the Minister's employees and agents, exclude and disclaim liability to the User for losses and damages of whatsoever nature and howsoever arising including, without limitation, any direct, indirect, special, consequential, punitive or incidental damages, loss of use, loss of data, loss caused by a virus, loss of income or profit, claims of third parties, even if Alberta Energy have been advised of the possibility of such damages or losses, arising out of or in connection with the use of the Alberta Energy website, including the accessing or downloading of the scanned mineral assessment report and the use for any purpose of the scanned mineral assessment report so downloaded or retrieved.
- d) User agrees to indemnify and hold harmless the Minister, and the Minister's employees and agents against and from any and all third party claims, losses, liabilities, demands, actions or proceedings related to the downloading, distribution, transmissions, storage, redistribution, reproduction or exploitation of each scanned mineral assessment report obtained by the User from Alberta Energy.

FEB 06 2015
20150001

Mineral Assessment Report – Period 2

PART B

Technical Report

Project Name: Erith Tie

Metallic and Industrial Minerals Permit number: 9311010578

Client Name: Jason Robert Irvin Wood operating as Wood Group Exploration

Submitted by

Report Author: Jason Robert Irvin Wood

Date: February 4, 2015

**General Files CSMAR-MAR20150001
Metallic & Industrial Minerals Assessment
Report - Eirth Tie
Submitted by: Jason Wood**

**Confidentiality Report End Date:
January 10, 2016**

Table of Contents

Breakdown statement of project work	1
Introduction	2
Summary	2
Location	2
Work performed	2
Results	4
Conclusions	6
Author Qualifications	7
Appendix A	8
Appendix B	16

Breakdown Statement of Project Work – Period 2

January 11, 2013 – January 10, 2015

Project Name: Erith Tie

	<u>Amount Spent</u>
1. Prospecting	\$ 57,935.00
2. Geological mapping & petrography	\$ 0
3. Geophysical Surveys	
a. Airborne	\$ 0
b. Ground	\$ 0
4. Geochemical Surveys	\$ 0
5. Trenching and Stripping	\$ 0
6. Drilling	\$ 0
7. Assaying & whole rock analysis	\$ 2,576.07
8. Other Work	\$ 0
	<hr/>
SUBTOTAL	\$ 60,511.07
9. Administration (10% of subtotal)	<u>\$ 6,051.11</u>
GRAND TOTAL	<u>\$ 66,562.18</u>

Jason Wood

Feb 4 / 15

Date

Introduction

The purpose of the assessment work is to analyze the area with the intent of open pit mining.

Summary

A more concentrated effort was done in a smaller area at 16-16-049-18 W5. In 2013 the exploration was more concentrated on the river portions between the mouth of the Lundrum and just below camp. In the spring and summer of 2014 three areas were dug by hand. Between the first and second dig plots was six meters and between the second and third dig plots was eight meters. These plots were dug to get an idea of the pattern of material underground. In the fall of 2014 some panning was done upstream of the bridge crossing the Erith Tie River where there is a large gravel area on the southern end of the exploration permit area.

Location

Permit number 9311010578 is located at township 49-18 W5 blocks 1 – 36. Maps of the permit area showing the test points where samples have been taken are included in Appendix B.

Work Performed

The work period for the Erith Tie is from January 11, 2013 to January 20, 2015. All work during the work period was performed by Jason Wood and Robert Wood. Not as much rock was taken for samples this period. Most of the mineral taken out was screened material from the trommel. Two pickup trucks were used to haul equipment, the camper and screened material removed from the permit area. One pick-up was used for the trailer and second sluice box and the other pick-up was used to carry fuel, the trommel, pails of concentrate, generator, pump hoses, metal detector and screening equipment.

The Suzuki Samarai was used to access harder terrain, to carry equipment and haul rock samples back to camp. We also used hand equipment, a trommel, a generator and a 2" pump to run equipment. The camper was used for shelter and was brought out on each trip. Camp is at way point 209 (16-16-049-18 W5).

Project Erith Tie 2013

April 25, 2013	Picked 10 kilograms of rock and rock chips from mouth of Lundrum to below the camp area.
May 15 – 19, 2013	Worked trommel on 2 areas on gravel bars in the stream at camp. Concentrates from trommel tested at lab. Sample #58 taken from gravel bar in pails, carried to pick-up and drove to camp. Concentrated once more on shaker table. 60 pails of gravel bar material run through

trommel one and a half pails of concentrate taken home.

- June 5 – 9, 2013 Picked up pails of pay gravel from exposed gravel bar at mouth of Lundrum and running through trommel and while screening at the trommel we picked out some type of rock sample #59 (map #11a) for lab assessment. During digging found lots of rock like sample #60 (map #12a). These types of rock broken down by nature are some of the source of mineralization in the area.
- June 5, 2013 Set up camp in the afternoon. Worked on setting up equipment and gathered 17 pails of pay gravel out of the mouth of Lundrum for the next day for running it through the trommel.
- June 6, 2013 Ran trommel for 2 clean outs, starting at 15 pails. Got gravel for next day of running.
- June 7, 2013 Ran the trommel and filled 12 more pails for next day.
- June 8, 2013 Run last 12 pails plus 6 more pails, three clean outs.
- June 9, 2013 Two pails of concentrates were taken home. Packed up and drove back home.
- June 10, 2013 Took 8 samples to Loring Laboratories (Alberta) Ltd. in Calgary, Alberta. Included in the samples were Samples 49 – 56 which were taken during the 2012 30 element and precious metals test that were done at that time. During this round of testing rare earth testing was done on these samples.
- June 26 – 29, 2013 Worked marker #11a again because water levels made it hard to do any other work by hand and worry about getting pick-ups stuck. This area was a safe one to get material from with high water levels, and run through our trommel. Took 42 pails off from a gravel bar at the mouth of Lundrum.
- July 17 – 21, 2013 Another 48 pails of pay dirt from upstream at Lundrum was run through the trommel from the mouth of the Lundrum due to high water levels, at marker #11a.
- August 7 -11, 2013 Took 48 pails just upstream from camp at the gravel bar. Ran the gravel through the trommel at marker #1a and #2a. Took one full pail of concentrates home.
- September 18 – 25, 2013 Run the trommel for 141 pails by hand. Carried an average of 20 pails to pick-up each day and delivered to trommel at camp. Took two pails

of concentrates home.

Project Erith Tie 2014

May 9, 2014	Took one high bank sample behind camp at Way point 209 (16-16-049-18 W5)
May 28 – June 1, 2014	Ran 64 pails from above camp.
June 21, 2014	Found 2 more gravel areas. One was north west of camp $\frac{3}{4}$ of a kilometer straight as the crow flies. The other was just across the Lundrum bridge approximately 100 meters, then went right for 500 meters. Not much for gold was found in the first area. Good gold was found in the second area.
July 10 – 13, 2014	Ran 60 pails through the trommel from another spot above camp.
July 30 – August 2, 2014	Ran 60 pails from the gravel bar upstream 50 meters above camp.
September 22 – 29, 2014	Ran 80 pails through the trommel from the third spot picked out above camp (16-16-049-18W5). Also did some panning.
October 23, 2014	Day out panning above 2 nd bridge (01-09-049-18W5), checking gravel in stream for gold. Each shovel screened down showing 8 to 20 flakes per shovel.
December 8, 2014	Trip to Lorrington Laboratories Ltd. in Calgary, AB

Results

Test samples were hand delivered to Lorrington Laboratories Ltd. in Calgary, Alberta. They did 30 Element ICP Analyses as well as Rare Earth Analyses and Precious Metals. All results were positive. Testing found elevated levels of precious metals as well as non-precious metals. See Part C for the table summarizing the sample attributes as well as the Certificate of Assay and 30 Element ICP Analysis.

Sample #	Date collected	Attributes	Lab results for precious metals (see ICP Analysis for remaining results)
49	Aug 30 – Sep 6, 2012	Trommel test soil	Testing for rare earth in 2014 revealed some levels of rare earth
50	Sep 26 – 30, 2012	Trommel test soil	Testing for rare earth in 2014 revealed some levels of rare earth

Sample #	Date collected	Attributes	Lab results for precious metals (see ICP Analysis for remaining results)
51 – 54	Jun 1 – 4, 2011	Test soil	Testing for rare earth in 2014 revealed some levels of rare earth
55	Jul 13 – 16, 2011	Rock chip	Testing for rare earth in 2014 revealed some levels of rare earth
56	Sep 26 – 30, 2012	Dark red liquid from river bank	Testing for rare earth in 2014 revealed some levels of rare earth
58	May 15 - 19, 2013	Concentrates	Tested high for gold, platinum and silver. Also tested high for rare earth minerals.
59	Jun 5 – 9, 2013	Reddish type rock	Contained silver, tested high in the 30 Element ICP
60	Jun 5 – 9, 2013	Egg shaped lighter colored rock	Contained small amounts of gold and silver
61	Apr 25, 2013	Rock	Contained silver, gold and platinum
62	Apr 25, 2013	Rock	Contained silver, gold and platinum
63	Apr 25, 2013	Rock	Contained silver, gold and platinum
64	Apr 25, 2013	Rock	Contained silver and gold
65	Apr 25, 2013	Rock	Contained silver and gold
66	July 30 – Aug 2, 2014	Concentrates from shaker table	Contained high amounts of silver, gold and platinum
67	July 10 – 13, 2014	Concentrates from shaker table	Contained high amounts of silver, gold and platinum
68	Dec 7, 2014	Tailings from shaker table of all test results from 2014	Contained silver and rare earth minerals
69	May 28 – Jun 1, 2014	Concentrates from shaker table	Contained silver, gold, pladium, platinum and rhodium. Also had good levels of rare earth minerals.
70	Sep 26 – 27, 2014	Fine red sand	High in silver unconcentrated test results and contains rare earth minerals
71	Dec 7, 2014	Tailings from shaker table of all test results from 2014	Contained silver and rare earth minerals

Conclusion

Fourteen new samples were tested by Lorrington Laboratories Ltd. between June 2013 and December 2014. The test results have been positive.

There is a direct relationship between the rocks we have had sampled (eg. #60 - #65) and later work in this area of the gravels containing sediment that we have concentrated with our trommel and shaker table.

In our findings, with no external help, we found a lot of the types of rocks containing precious metals and rare earth minerals in the area. In short, there is an abundance of precious metals and rare earth minerals even in the soil sampling. The area is easy to access and it is not hard to concentrate the material that we have dug up. My goal is to make a viable open pit mine in the future.

Author Qualifications

I, Jason Wood, residing at [REDACTED] do hereby certify that:

1. I am an independent prospector
2. I have been an active prospector in Alberta, Canada for two years.
3. I am not aware of any material fact or material change with respect to the subject matter of the Report that is not reflected in the Report, or the omission to disclose which makes the Report misleading.

[REDACTED]
[REDACTED]
[REDACTED] Jason Wood

February 4, 2015

Maps showing test points

These maps are for samples 49 – 56 which were collected in Period 1 (January 2011 – January 2013) and were retested in 2014 for rare earth.

See Part C for the table of Sample Attributes which shows the coordinates for each test sample and identifies the corresponding location number of the following maps.









Satellite



34

32

49

36

Google



Imagery ©2013 GNS Spot Image, DigitalGlobe, GeoEye - Terms of Use Report a map error





Satellite

18

Google 200 m 1000 ft

Imagery ©2013 OneSpot, Image, DigitalGlobe, GeoEye - Terms of Use Report a map error

h1

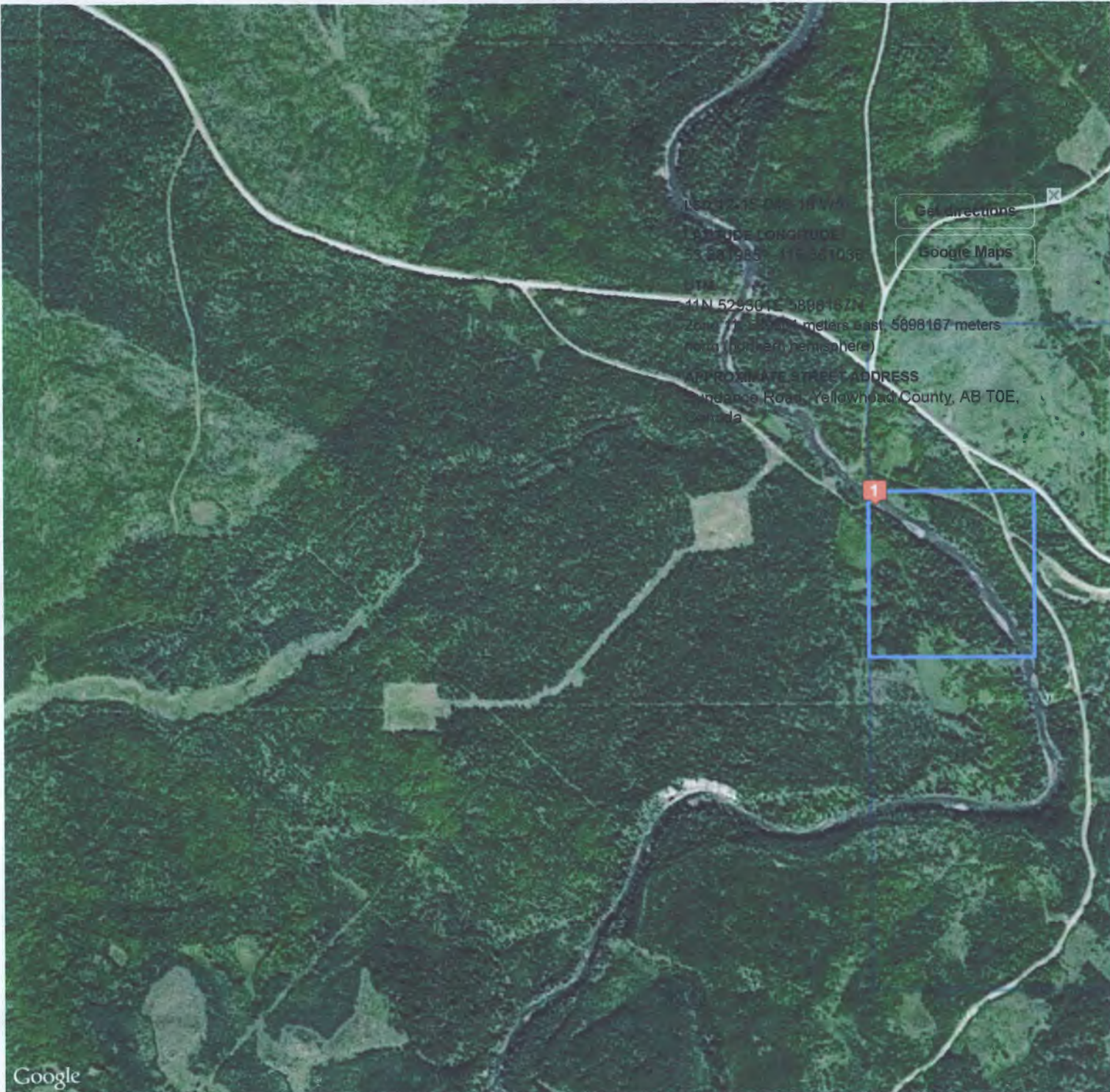


Imagery ©2013 Ceres/Spot Image, DigitalGlobe, GeoEye, TerraMetrics, etc. Report a map error

Maps showing test points

These maps are for samples 58 - 71 which were collected in Period 2 (January 2013 – January 2015).

See Part C for the table of Sample Attributes which shows the coordinates for each test sample and identifies the corresponding location number of the following maps.



LSD 12-15-049-18 W5

LATITUDE LONGITUDE
53.231985 -116.561036

UTM
41N 52930 E 5898167M
Zone 11N 500000 meters East, 5898167 meters
North (Northern Hemisphere)

APPROXIMATE STREET ADDRESS
Sunshine Road, Yellowhead County, AB T0E,
Canada

Get Directions

Google Maps

BaseLoc (/) DLS (/dls/) by 0.013

GPS Police

(<http://www.gpspolice.com/>)



Watch the video

(<http://www.youtube.com/watch?v=fmjpFlw6sz8&feature=youtu.be&hd=1>)

Mapping, conversion and sharing of LSD (Alberta and Saskatchewan), UTM, latitude and longitude, and street addresses. »

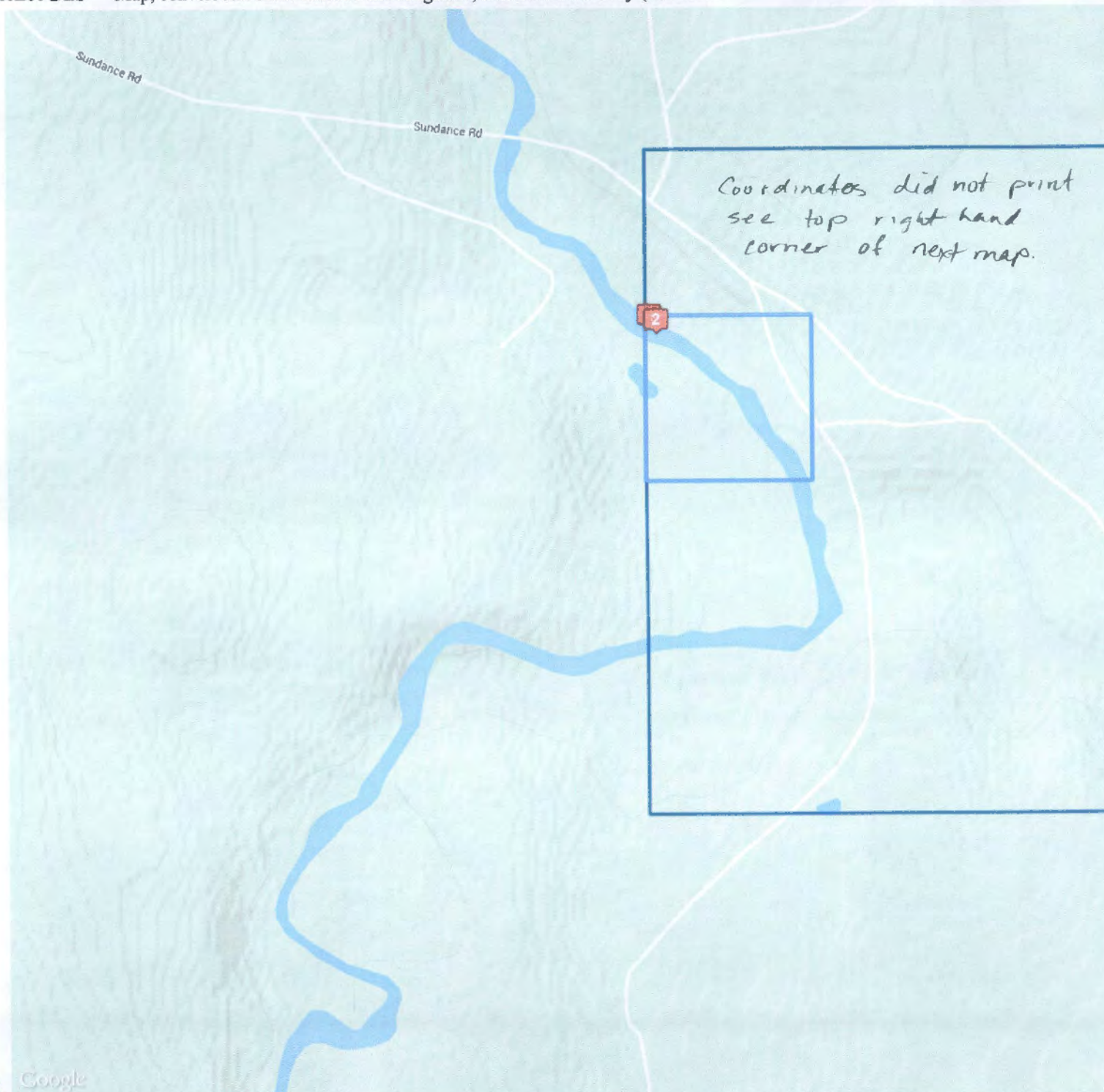
New version (<https://www.lsdfinder.com/>) of BaseLoc DLS available now! New features include **NTS BC grid**, **Manitoba LSDs**, search by **quartersection** and **UWI**, unlimited lookups, API and more!
[Click here for LSD Finder \(https://www.lsdfinder.com/\)](https://www.lsdfinder.com/)

LSD	Lat, Lng Decimal	Lat, Lng Degrees M:S	UTM	Address
-----	---------------------	-------------------------	-----	---------

Street View Clear Submit

30 free lookups per day — 30 remaining

1 a 12-15-049-18 W5



BaseLoc (/) DLS (/dls/) by 00121

GPS Police

(http://www.gpspolice.com/)



Watch the video

(http://www.youtube.com/watch?v=fmjpfW6sz8&feature=youtu.be&hd=1)

Mapping, conversion and sharing of LSD (Alberta and Saskatchewan), UTM, latitude and longitude, and street addresses. »

New version (https://www.lsdfinder.com) of BaseLoc DLS available now! New features include NTS BC grid, Manitoba LSDs, search by quartersection and UWI, unlimited lookups, API and more! Click here for LSD Finder (https://www.lsdfind

LSD	Lat, Lng Decimal	Lat, Lng Degrees M:S	UTM	Address
-----	---------------------	-------------------------	-----	---------

--	--	--	--	--

Street View Clear Submit

30 free lookups per day — 30 remaining

- 1 12-15-049-18 W5 ✖
- 2 12-15-049-18 W5 ✖



LSD 12-15-049-18 W5
 LATITUDE/LONGITUDE
 53.231883 -116.560864
 UTM
 11N 529812E 5898156N
 Zone 11, 529812 meters east, 5898156 meters
 north (northern hemisphere)
 APPROXIMATE STREET ADDRESS
 Sundance Road, Yellowhead County, AB T0E
 Canada

Get directions

Google Maps

BaseLoc (/) DLS (/dls/) by 0.0123

GPS Police

(<http://www.gpspolice.com/>)



Watch the video

(<http://www.youtube.com/watch?v=fmjpFlw6sz8&feature=youtu.be&hd=1>)

Mapping, conversion and sharing of LSD (Alberta and Saskatchewan), UTM, latitude and longitude, and street addresses. »

New version (<https://www.lsdfinder.com/>) of BaseLoc DLS available now! New features include **NTS BC grid**, **Manitoba LSDs**, search by **quartersection** and **UWI**, unlimited lookups, API and more!
 Click here for LSD Finder (<https://www.lsdfind.com/>)

LSD	Lat, Lng Decimal	Lat, Lng Degrees M:S	UTM	Address
-----	---------------------	-------------------------	-----	---------

Street View Clear Submit

30 free lookups per day — 30 remaining

- | | | |
|---|-------------------|--|
| 1 | 12-15-049-18 W5 | |
| 2 | a 12-15-049-18 W5 | |



BaseLoc (/) DLS (/dls/) by 0.0096

GPS Police

[\(http://www.gpspolice.com/\)](http://www.gpspolice.com/)



Watch the video

<http://www.youtube.com/watch?v=fmipFlw6sz8&feature=youtu.be&hd=1>

Mapping, conversion and sharing of LSD (Alberta and Saskatchewan), UTM, latitude and longitude, and street addresses. »

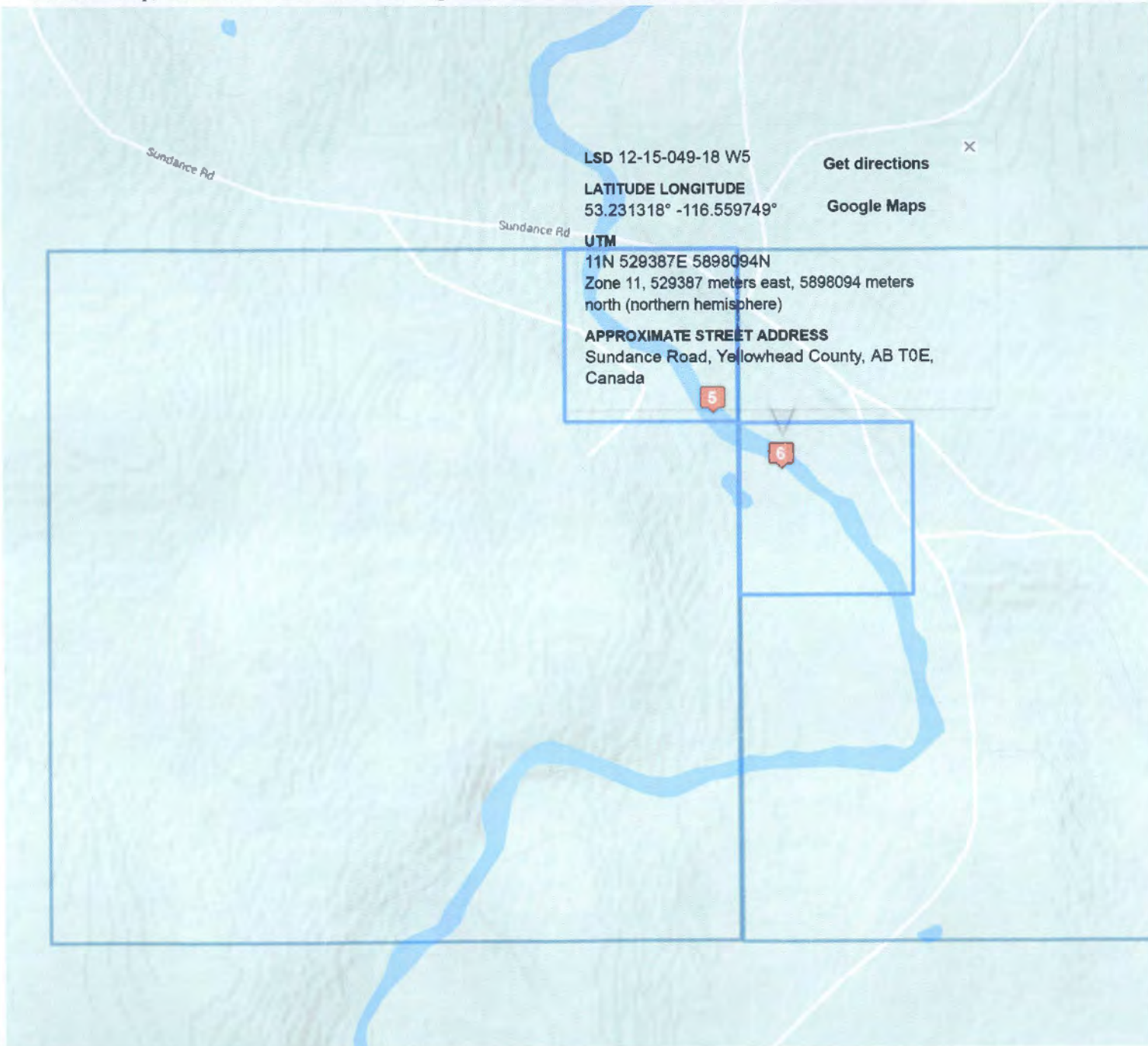
New version (<https://www.lsdfinder.com>) of BaseLoc DLS available now! New features include **NTS BC grid, **Manitoba LSDs**, search by **quartersection** and **UWI**, unlimited lookups, API and more! [Click here for LSD Finder \(https://www.lsdfinder.com\)](https://www.lsdfinder.com)**

LSD	Lat, Lng Decimal	Lat, Lng Degrees M:S	UTM	Address
-----	---------------------	-------------------------	-----	---------

Street View Clear Submit

30 free lookups per day — 28 remaining

5 a	16-16-049-18 W5	
-----	-----------------	--



BaseLoc (/) DLS (/dls/) by 0.0079

GPS Police

(<http://www.gpspolice.com/>)



Watch the video

(<http://www.youtube.com/watch?v=fmjpFlw6sz8&feature=youtu.be&hd=1>)

Mapping, conversion and sharing of LSD (Alberta and Saskatchewan), UTM, latitude and longitude, and street addresses. »

New version (<https://www.lsdfinder.com>) of BaseLoc DLS available now! New features include **NTS BC grid**, **Manitoba LSDs**, search by **quartersection** and **UWI**, unlimited lookups, API and more!
 Click here for LSD Finder (<https://www.lsdfind>)

LSD	Lat, Lng Decimal	Lat, Lng Degrees M:S	UTM	Address
-----	---------------------	-------------------------	-----	---------

Street View Clear Submit

30 free lookups per day — 26 remaining

5	16-16-049-18 W5	✕
6 a	12-15-049-18 W5	✕

23

Google



LSD 12-15-049-18 W5

Get directions

LATITUDE LONGITUDE

53.231318° -116.559749°

Google Maps

UTM

11N 529037 E 538094N

Zone 11N 529037 meters east 538094 meters north (northern hemisphere)

APPROXIMATE STREET ADDRESS

Sundance Road, Yellowhead County, AB T0A 0A0, Canada

BaseLoc (/) DLS (/dls/) by 0.0079

GPS Police

(http://www.gpspolice.com/)



Watch the video

(http://www.youtube.com/watch?v=fmipFlw6sz8&feature=youtu.be&hd=1)

Mapping, conversion and sharing of LSD (Alberta and Saskatchewan), UTM, latitude and longitude, and street addresses. »

New version (<https://www.lsdfinder.com>) of BaseLoc DLS available now! New features include **NTS BC grid**, **Manitoba LSDs**, search by **quartersection** and **UWI**, unlimited lookups, API and more!
[Click here for LSD Finder \(https://www.lsdfinder.com\)](https://www.lsdfinder.com)

LSD	Lat, Lng Decimal	Lat, Lng Degrees M:S	UTM	Address
-----	---------------------	-------------------------	-----	---------

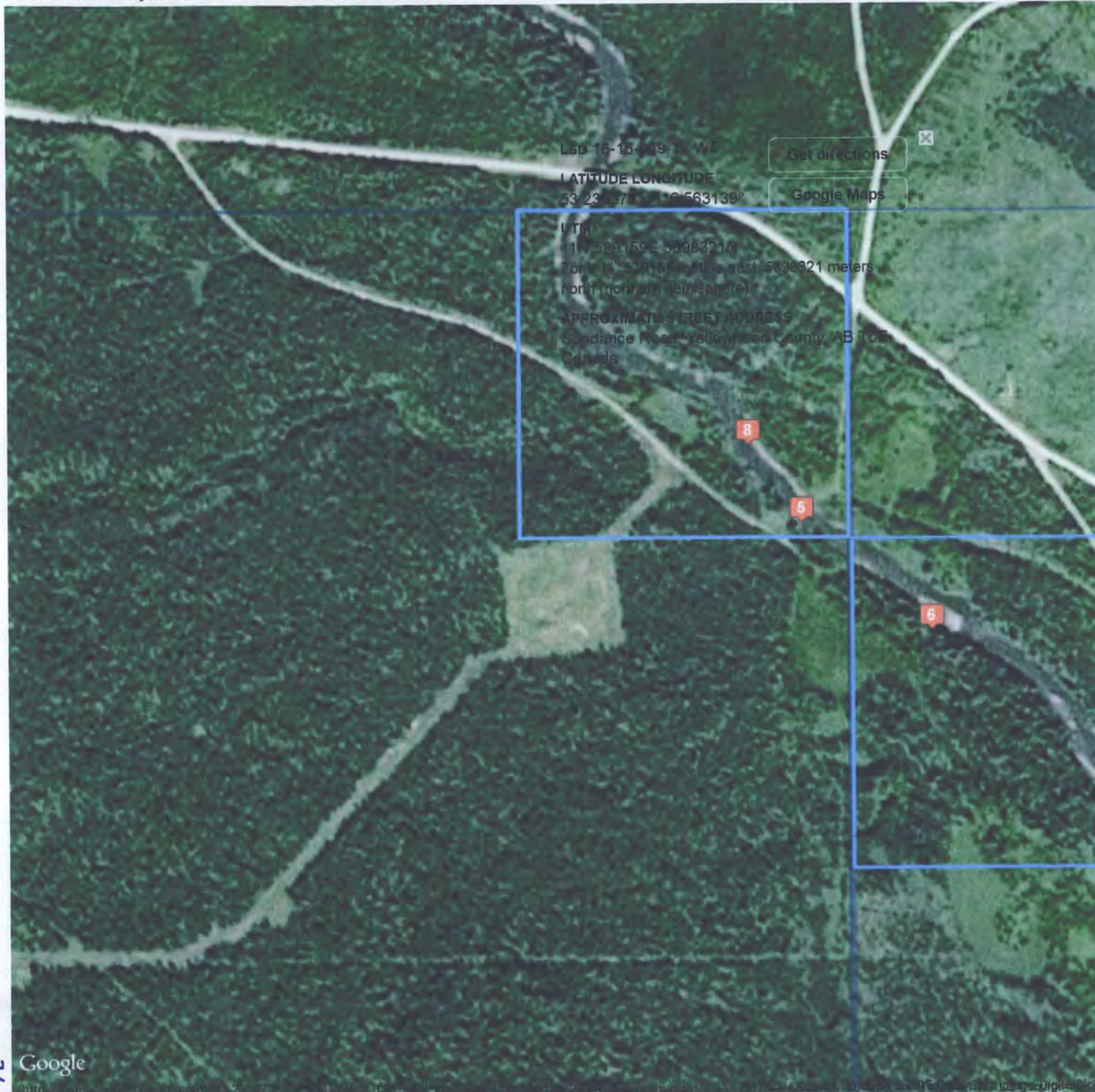
Street View Clear Submit

30 free lookups per day — 26 remaining

- 5 16-16-049-18 W5
- 6 12-15-049-18 W5

ht

Google



LSD 16-16-049-18 W5
LATITUDE LONGITUDE
53.233373 -116.563139

Get directions

Google Maps

UTM
11W 50E 159E 50Q 8321N
Zone 11 50E 159E (meters) 500000 meters
north (north from Greenwich)
APPROXIMATE STREET ADDRESS
Sundance Road, Yellowhead County, AB T0E
Canada

BaseLoc (/) DLS (/dls/) by 0.0086

GPS Police

(http://www.gpspolice.com/)



Watch the video

(http://www.youtube.com/watch?v=fmipFlw6sz8&feature=youtu.be&hd=1)

Mapping, conversion and sharing of LSD (Alberta and Saskatchewan), UTM, latitude and longitude, and street addresses. »

New version (https://www.lsdfinder.com) of BaseLoc DLS available now! New features include NTS BC grid, Manitoba LSDs, search by quartersection and UWI, unlimited lookups, API and more! Click here for LSD Finder (https://www.lsdfind

LSD	Lat, Lng Decimal	Lat, Lng Degrees M:S	UTM	Address
-----	---------------------	-------------------------	-----	---------

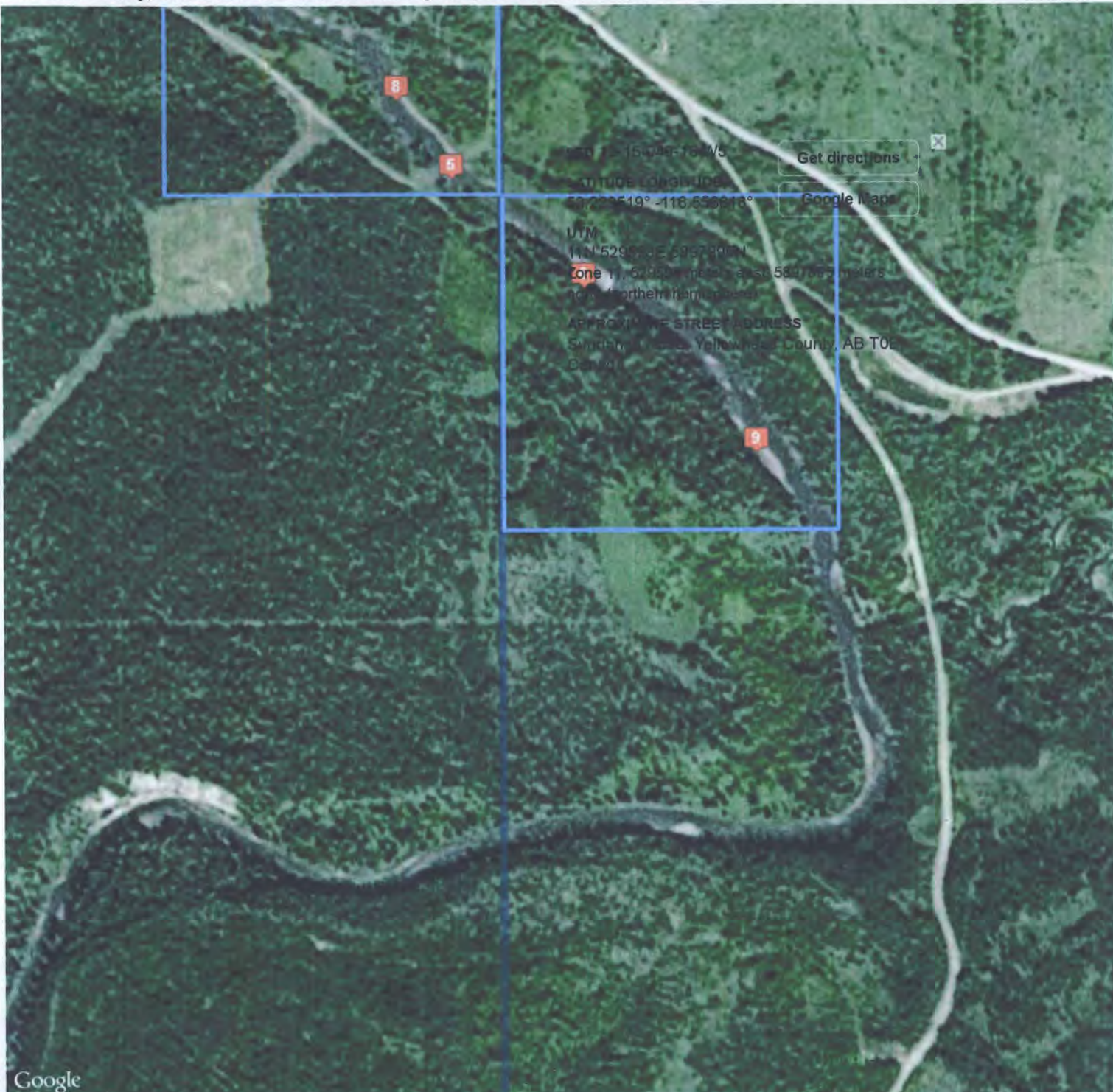
Street View Clear Submit

30 free lookups per day — 25 remaining

- 5 16-16-049-18 W5
- 6 12-15-049-18 W5
- 8 *a* 16-16-049-18 W5

26

Google



BaseLoc (/) DLS (/dls/) by 00143

GPS Police

[\(http://www.gpspolice.com/\)](http://www.gpspolice.com/)



Watch the video

<http://www.youtube.com/watch?v=fmipFlw6sz8&feature=youtu.be&hd=1>

Mapping, conversion and sharing of LSD (Alberta and Saskatchewan), UTM, latitude and longitude, and street addresses. »

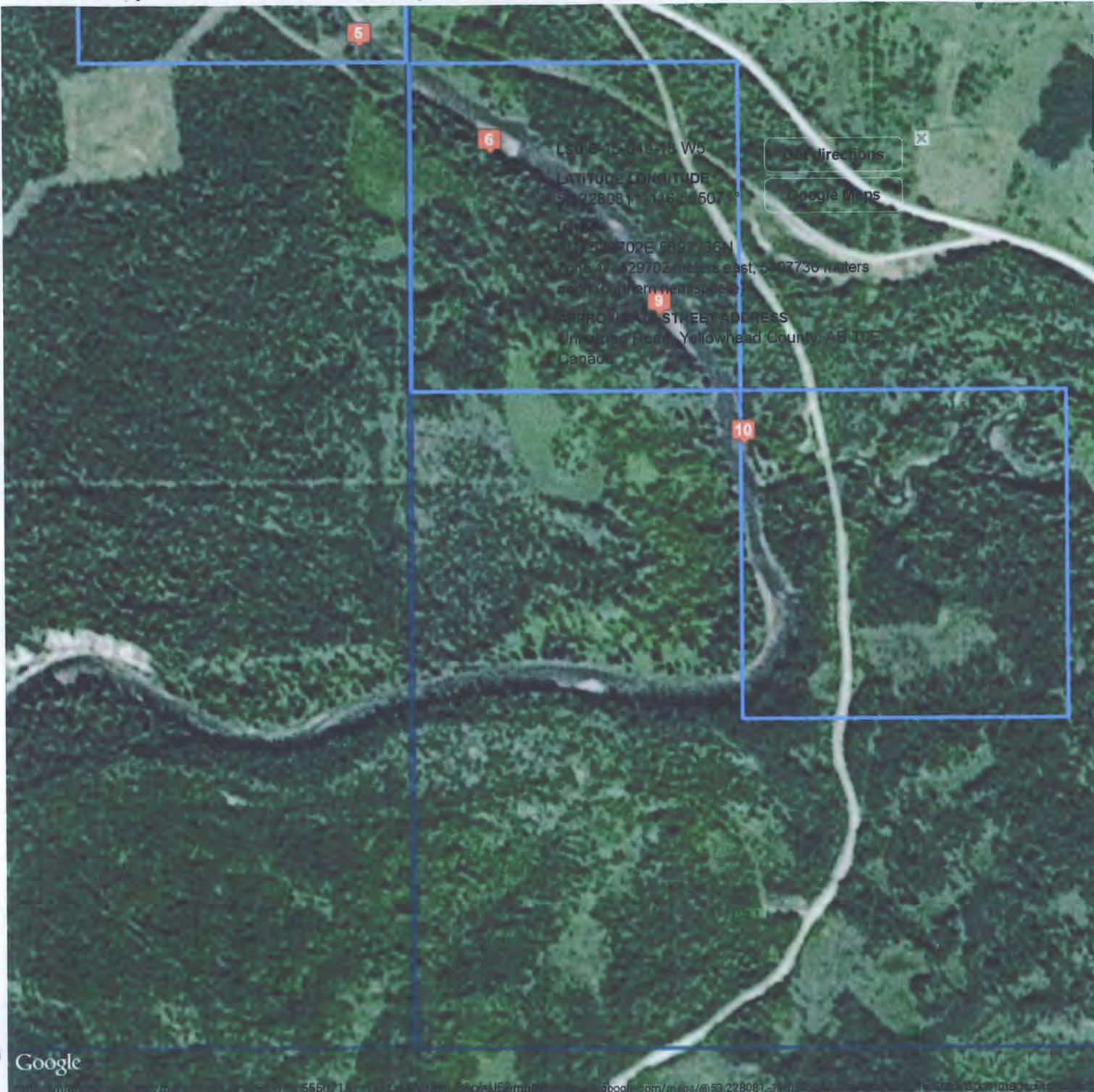
New version (<https://www.lsdfinder.com/>) of BaseLoc DLS available! New features include **NTS BC grid**, **Manitoba LSDs**, search by **quartersection** and **UWI**, unlimited lookups, API and more!
[Click here for LSD Finder \(https://www.lsdfind](https://www.lsdfind)

LSD	Lat, Lng Decimal	Lat, Lng Degrees M:S	UTM	Address
-----	---------------------	-------------------------	-----	---------

Street View Clear Submit

30 free lookups per day — 24 remaining

5	16-16-049-18 W5	X
6	12-15-049-18 W5	X
8	16-16-049-18 W5	X
9a	12-15-049-18 W5	X



BaseLoc (/) DLS (/dls/) by 0.0131

GPS Police

(http://www.gpspolice.com/)



Watch the video

(http://www.youtube.com/watch?v=fmjplw6sz8&feature=youtu.be&hd=1)

Mapping, conversion and sharing of LSD (Alberta and Saskatchewan), UTM, latitude and longitude, and street addresses. »

New version (<https://www.lsdfinder.com/>) of BaseLoc DLS available now! New features include **NTS BC grid**, **Manitoba LSDs**, search by **quartersection** and **UWI**, unlimited lookups, API and more!
[Click here for LSD Finder \(https://www.lsdfinder.com/\)](https://www.lsdfinder.com/)

LSD	Lat, Lng Decimal	Lat, Lng Degrees M:S	UTM	Address
-----	---------------------	-------------------------	-----	---------

Street View Clear Submit

30 free lookups per day — 23 remaining

5	16-16-049-18 W5	X
6	12-15-049-18 W5	X
8	16-16-049-18 W5	X
9	12-15-049-18 W5	X
10	6-15-049-18 W5	X



BaseLoc (/) DLS (/dls/) by 0.0108

GPS Police

(http://www.gpspolice.com/)



Watch the video

(http://www.youtube.com/watch?v=fmjpFlw6sz8&feature=youtu.be&hd=1)

Mapping, conversion and sharing of LSD (Alberta and Saskatchewan), UTM, latitude and longitude, and street addresses. »

New version (https://www.lsdfinder.com) of BaseLoc DLS available now! New features include NTS BC grid, Manitoba LSDs, search by quartersection and UWI, unlimited lookups, API and more! Click here for LSD Finder (https://www.lsdfind

LSD	Lat, Lng Decimal	Lat, Lng Degrees M.S	UTM	Address
-----	---------------------	-------------------------	-----	---------

Street View Clear Submit

30 free lookups per day — 22 remaining

10	6-15-049-18 W5	<input type="checkbox"/>
11	6-15-049-18 W5	<input checked="" type="checkbox"/>



BaseLoc (/) DLS (/dls/) by 0.0092

GPS Police

(http://www.gpspolice.com/)



Watch the video

(http://www.youtube.com/watch?v=fmjpFlw6sz8&feature=youtu.be&hd=1)

Mapping, conversion and sharing of LSD (Alberta and Saskatchewan), UTM, latitude and longitude, and street addresses. »

New version (<https://www.lsdfinder.com>) of BaseLoc DLS available now! New features include **NTS BC grid**, **Manitoba LSDs**, search by **quartersection** and **UWI**, unlimited lookups, API and more!
 Click here for LSD Finder (<https://www.lsdfind>)

LSD	Lat, Lng Decimal	Lat, Lng Degrees M.S	UTM	Address
-----	---------------------	-------------------------	-----	---------

Street View Clear Submit

30 free lookups per day — 21 remaining

12a 6-15-049-18 W5



LSD 16-16-049-18 W5

Get directions

LATITUDE LONGITUDE
53.233873° -116.561573°

Google Maps

UTM
11N 529264E 5898377N
Zone 11, 529264 meters east, 5898377 meters north (northern hemisphere)

APPROXIMATE STREET ADDRESS
Sundance Road, Yellowhead County, AB T0E,
Canada

BaseLoc (/) DLS (/dls/) by 0.0099

GPS Police

(http://www.gpspolice.com/)



Watch the video

(http://www.youtube.com/watch?v=fmjpFlw0sz8&feature=youtu.be&hd=1)

Mapping, conversion and sharing of LSD (Alberta and Saskatchewan), UTM, latitude and longitude, and street addresses. »

New version (<https://www.lsdfinder.com>) of BaseLoc DLS available now! New features include **NTS BC grid**, **Manitoba LSDs**, search by **quartersection** and **UWI**, unlimited lookups, API and more!
[Click here for LSD Finder \(https://www.lsdfinder.com\)](https://www.lsdfinder.com)

LSD	Lat, Lng Decimal	Lat, Lng Degrees M:S	UTM	Address

Street View Clear Submit

30 free lookups per day — 30 remaining

1.b 16-16-049-18 W5 X



LSD: 16-16-049-18 W5
 LATITUDE: 53.233873
 LONGITUDE: -116.561573

Get directions
 Google Maps

UTM
 50QUG264E 5898377N
 500,000 meters east, 5898377 meters
 north (northern hemisphere)
 APPROXIMATE STREET ADDRESS
 Bundage Road, Yellowhead County, AB T0E,
 Canada

BaseLoc (/) DLS (/dls/) by 0.0099
 GPS Police
 (http://www.gpspolice.com/)



Watch the video
 (http://www.youtube.com/watch?v=fmipFlw6sz8&feature=youtu.be&hd=1)
 Mapping, conversion and sharing of LSD (Alberta and Saskatchewan), UTM, latitude and longitude, and street addresses. »

New version (https://www.lsdfinder.com) of BaseLoc DLS available now! New features include NTS BC grid, Manitoba LSDs, search by quartersection and UWI, unlimited lookups, API and more! Click here for LSD Finder (https://www.lsdfind

LSD	Lat, Lng Decimal	Lat, Lng Degrees M:S	UTM	Address
-----	---------------------	-------------------------	-----	---------

Street View Clear Submit

30 free lookups per day — 30 remaining

1 b 16-16-049-18 W5 ✖

26

Google



LSD 16-16-049-18 W5

Get directions

LATITUDE LONGITUDE
53.233951° -116.561894°

Google Maps

UTM
11N 529242E 5898386N
Zone 11, 529242 meters east, 5898386 meters north (northern hemisphere)

APPROXIMATE STREET ADDRESS
Sundance Road, Yellowhead County, AB T0E,
Canada

BaseLoc (/) DLS (/dls/) by 0.0108

GPS Police

(http://www.gpspolice.com/)



Watch the video

(http://www.youtube.com/watch?v=fmjpFlw6sz8&feature=youtu.be&hd=1)

Mapping, conversion and sharing of LSD (Alberta and Saskatchewan), UTM, latitude and longitude, and street addresses. »

New version (<https://www.lsdfinder.com/>) of BaseLoc DLS available now! New features include **NTS BC grid**, **Manitoba LSDs**, search by **quartersection** and **UWI**, unlimited lookups, API and more!
[Click here for LSD Finder \(https://www.lsdfinder.com/\)](https://www.lsdfinder.com/)

LSD	Lat, Lng Decimal	Lat, Lng Degrees M:S	UTM	Address
-----	---------------------	-------------------------	-----	---------

Street View Clear Submit

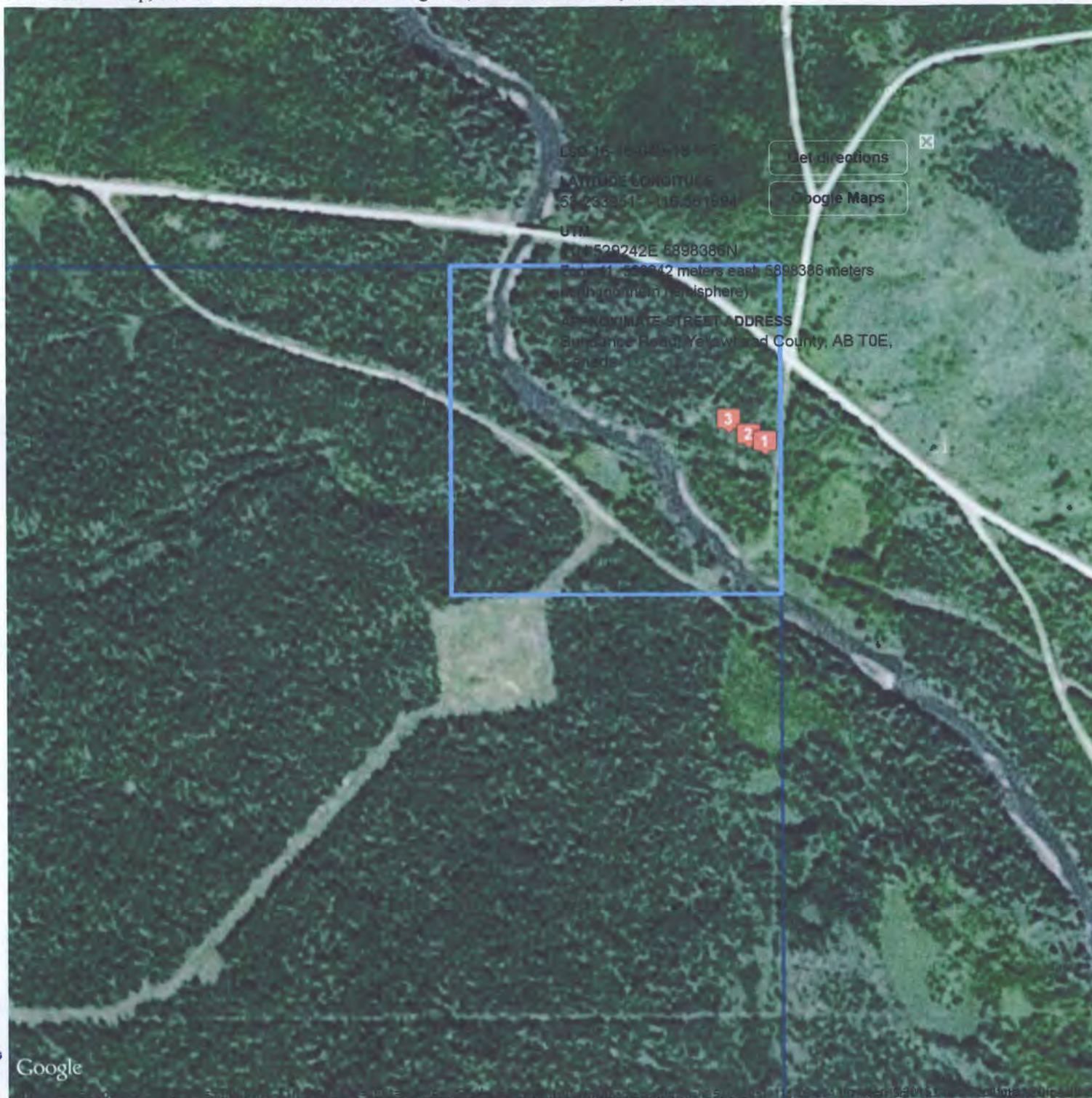
30 free lookups per day — 29 remaining

- | | | |
|---|-----------------|---|
| 1 | 16-16-049-18 W5 | X |
| 2 | 16-16-049-18 W5 | X |
| 3 | 16-16-049-18 W5 | X |

37

Google

(http://maps.google.com/maps?ll=53.233951,-116.561894&z=15&t=p&hl=en&mapdata=...)



LSD 16-16-049-18 W5
 LATITUDE LONGITUDE
 53.233951 -116.561894
 UTM
 E 529242E 5898386N
 East 1 529242 meters east 5898386 meters
 north (northern hemisphere)
 APPROXIMATE STREET ADDRESS
 Sundance Road, Yellowhead County, AB T0E,
 Canada

Get directions
 Google Maps

BaseLoc (/) DLS (/dls/) by 0.0108

GPS Police

(<http://www.gpspolice.com/>)



Watch the video

(<http://www.youtube.com/watch?v=fmjpFlw6sz8&feature=youtu.be&hd=1>)

Mapping, conversion and sharing of LSD (Alberta and Saskatchewan), UTM, latitude and longitude, and street addresses. »

New version (<https://www.lsdfinder.com/>) of BaseLoc DLS available! New features include **NTS BC grid**, **Manitoba LSDs**, search by **quartersection** and **UWI**, unlimited lookups, API and more!
[Click here for LSD Finder \(https://www.lsdfinder.com/\)](https://www.lsdfinder.com/)

LSD	Lat, Lng Decimal	Lat, Lng Degrees M:S	UTM	Address
-----	---------------------	-------------------------	-----	---------

Street View Clear Submit

30 free lookups per day — 29 remaining

1	16-16-049-18 W5	<input type="checkbox"/>
2	b 16-16-049-18 W5	<input type="checkbox"/>
3	16-16-049-18 W5	<input type="checkbox"/>

38

Google



LSD 16-16-049-18 W5

Get directions

LATITUDE LONGITUDE
53.234117° -116.562238°

Google Maps

UTM
11N 529219E 5898404N
Zone 11, 529219 meters east, 5898404 meters north (northern hemisphere)

APPROXIMATE STREET ADDRESS
Sundance Road, Yellowhead County, AB T0E, Canada

BaseLoc (/) DLS (/dls/) by 0.0108

GPS Police

(http://www.gpspolice.com/)



Watch the video

(http://www.youtube.com/watch?v=fmipFlw6sz8&feature=youtu.be&hd=1)

Mapping, conversion and sharing of LSD (Alberta and Saskatchewan), UTM, latitude and longitude, and street addresses. »

New version (https://www.lsdfinder.com) of BaseLoc DLS available now! New features include NTS BC grid, Manitoba LSDs, search by quartersection and UWI, unlimited lookups, API and more!
Click here for LSD Finder (https://www.lsdfinder.com)

LSD	Lat, Lng Decimal	Lat, Lng Degrees M:S	UTM	Address
-----	---------------------	-------------------------	-----	---------

Street View Clear Submit

30 free lookups per day — 29 remaining

- | | | |
|---|-----------------|---|
| 1 | 16-16-049-18 W5 | X |
| 2 | 16-16-049-18 W5 | X |
| 3 | 16-16-049-18 W5 | X |



LSD: 16-16-049-18 W5

LATITUDE / LONGITUDE
53.234117 -116.562238

UTM
11N 529219E 5898404N
Zone: 11E 29219 meters east, 5898404 meters
south (Northern Hemisphere)

APPROXIMATE STREET ADDRESS:
Sundance Road, Yellowhead County, AB T0E,
Canada

Get directions
Google Maps

BaseLoc (/) DLS (/dls/) by 0.0108

GPS Police

(http://www.gpspolice.com/)



Watch the video

(http://www.youtube.com/watch?v=fmjpFlw6sz8&feature=youtu.be&hd=1)

Mapping, conversion and sharing of LSD (Alberta and Saskatchewan), UTM, latitude and longitude, and street addresses. »

New version (https://www.lsdfinder.com) of BaseLoc DLS available now! New features include NTS BC grid, Manitoba LSDs, search by quartersection and UWI, unlimited lookups, API and more!
Click here for LSD Finder (https://www.lsdfind

LSD	Lat, Lng Decimal	Lat, Lng Degrees M:S	UTM	Address
-----	---------------------	-------------------------	-----	---------

Street View Clear Submit

30 free lookups per day — 29 remaining

- 1 16-16-049-18 W5
- 2 16-16-049-18 W5
- 3 b 16-16-049-18 W5



LSD 5-10-049-18 W5

Get directions

LATITUDE LONGITUDE

53.210556° -116.55829°

Google Maps

UTM

11N 529499E 5895785N

Zone 11, 529499 meters east, 5895785 meters north (northern hemisphere)

APPROXIMATE STREET ADDRESS

Unnamed Road, Yellowhead County, AB T0E, Canada

BaseLoc (/) DLS (/dls/) by 0.0075

GPS Police

(http://www.gpspolice.com/)



Watch the video

(http://www.youtube.com/watch?v=fmjpFlw6sz8&feature=youtu.be&hd=1)

Mapping, conversion and sharing of LSD (Alberta and Saskatchewan), UTM, latitude and longitude, and street addresses. »

New version (https://www.lsdfinder.com) of BaseLoc DLS available now! New features include NTS BC grid, Manitoba LSDs, search by quartersection and UWI, unlimited lookups, API and more! Click here for LSD Finder (https://www.lsdfind

LSD	Lat, Lng Decimal	Lat, Lng Degrees M:S	UTM	Address
-----	---------------------	-------------------------	-----	---------

Street View Clear Submit

30 free lookups per day — 25 remaining

4 b 5-10-049-18 W5





LSD: 5-10-049-18 W5
 LATITUDE: 53.2109893°
 LONGITUDE: -116.55829°
 UTM:
 11N EP 499E 5895785N
 Zone 11, 529499 meters east, 5895785 meters north (northern hemisphere)
 APPROXIMATE STREET ADDRESS:
 Unnamed Road, Yellowhead County, AB T0E, Canada

[Get Coordinates](#)
[Get Street View](#)

BaseLoc (/) DLS (/dls/) by 0.0075

GPS Police

(http://www.gpspolice.com/)



Watch the video

(http://www.youtube.com/watch?v=fmjpFlw6sz8&feature=youtu.be&hd=1)

Mapping, conversion and sharing of LSD (Alberta and Saskatchewan), UTM, latitude and longitude, and street addresses. »

New version (<https://www.lsdfinder.com>) of BaseLoc DLS available now! New features include **NTS BC grid**, **Manitoba LSDs**, search by **quartersection** and **UWI**, unlimited lookups, API and more!
[Click here for LSD Finder \(https://www.lsdfinder.com\)](https://www.lsdfinder.com)

LSD	Lat, Lng	Lat, Lng	UTM	Address
	Decimal	Degrees M-S		

Street View Clear Submit

30 free lookups per day — 25 remaining

4 b 5-10-049-18 W5

th

Google

FEB 06 2015
20150001

Mineral Assessment Report – Period 2

PART C

Technical Appendices

Project Name: Erith Tie

Metallic and Industrial Minerals Permit number: 9311010578

Client Name: Jason Robert Irvin Wood operating as Wood Group Exploration

Submitted by

Report Author: Jason Robert Irvin Wood

Date: February 4, 2015

**General Files CSMAR-MAR20150001
Metallic & Industrial Minerals Assessment
Report – Erith Tie
Submitted by: Jason Wood**

**Confidentiality Report End Date:
January 10, 2016**

Table of Contents

Sample Attributes	1
Certified laboratory reports	3

Sample Attributes

Sample #	Date collected	Size and type of sample	Location coordinates	Observed physical or geological characteristics	Corresponding map #
Samples 49 – 56 were collected in Period 1 (January 2011 – January 2013) and retested in 2014 for rare earth					
49	Aug 30 – Sep 6, 2012	Approx. 500 g test soil out of trommel	53.232409 – 116.561894	Near the large boulder sample #6	48
50	Sep 26 – 30, 2012	Approx. 300 g test soil out of trommel	53.27512 – 116.603179	Near the large boulder sample #6	49
51	Jun 1 – 4, 2011	Approx. 1 Kg test soil	53.245572 – 116.563439	Taken approx. 5 meters above river bottom	50
52	Jun 1 – 4, 2011	Approx. 1 Kg test soil	53.246009 – 116.563482	Taken approx. 15 meters above river bottom	51
53	Jun 1 – 4, 2011	Approx. 500 g test soil	53.246009 – 116.563482	Taken approx. 15 meters above river bottom	51
54	Jun 1 – 4, 2011	Approx. 500 g test soil	53.246009 – 116.563482	Taken approx. 15 meters above river bottom	51
55	Jul 13 – 16, 2011	Chip off a larger rock mineralized quartz	53.254829 – 116.584661	Taken from edge of riverbank	52
56	Sep 26 – 30, 2012	Dark red liquid from river bank	53.231253 – 116.559534	Taken from river bank across from gravel bar	53
57	Was not retested for rare earth				
Samples 58 – 71 were new samples from Period 2 (January 2013 – January 2015)					
58	May 15 - 19, 2013	Concentrates, screened material from trommel	53.231985 – 116.561036 53.231883 – 116.560864	Taken from gravel bar	1a and 2a
59	Jun 5 – 9, 2013	Rocks picked from screened material	53.227593 – 116.554706	From mouth of Lundrum, hand-picked from screening equipment at trommel	11a
60	Jun 5 – 9, 2013	Rock shaped like an egg, with divets on it	53.227438 – 116.554728	From mouth of Lundrum, while screening material into pails	12a
61	Apr 25, 2013	Rock taken from riverbank	53.232512 – 116.562173	From mouth of the Lundrum to below camp	5a

Sample #	Date collected	Size and type of sample	Location coordinates	Observed physical or geological characteristics	Corresponding map #
62	Apr 25, 2013	Rock taken from riverbank	53.231318 – 116.559749	From mouth of the Lundrum to below camp	6a
63	Apr 25, 2013	Rock taken from riverbank	53.233373 – 116.563139	From mouth of the Lundrum to below camp	8a
64	Apr 25, 2013	Rock taken from riverbank	53.229519 – 116.556616	From mouth of the Lundrum to below camp	9a
65	Apr 25, 2013	Rock taken from riverbank	53.228081 – 116.555071	From mouth of the Lundrum to below camp	10a
66	July 30 – Aug 2, 2014	Gravel concentrates from the trommel	53.234117 – 116.562238	From an ancient riverbed gravel plateau	3b
67	July 10 – 13, 2014	Gravel concentrates from the trommel	53.233951 – 116.561894	From an ancient riverbed gravel plateau	2b
68	Dec 7, 2014	Taken from the tailings of the shaker table to determine losses during processing	N/A a test of all shaker table tailings from 2014	N/A a test of all shaker table tailings from 2014	N/A a test of all shaker table tailings from 2014
69	May 28 – Jun 1, 2014	Concentrates taken from trommel, and run on shaker table	53.233873 – 116.561573	Taken from above camp	1b
70	Sep 26 – 27, 2014	Red sand unconcentrated	53.210556 – 116.55829	From an ancient deposit of fine silt	4b
71	Dec 7, 2014	Taken from the tailings of the shaker table to determine losses during processing	N/A a test of all shaker table tailings from 2014	N/A a test of all shaker table tailings from 2014	N/A a test of all shaker table tailings from 2014

Certified Laboratory Reports



Loring Laboratories (Alberta) Ltd.

629 Beaverdam Road N.E.,
Calgary Alberta T2K 4W7
Tel: 274-2777 Fax: 275-0541
loringlabs@telus.net

ISO9001:2008 Certified

TO: Wood Group Exploration Ltd.

File No : 5 6 5 2 0
Date : June 27, 2013
Samples: Rock

Certificate of Assay

Attn: Jason Wood

Sample ID	Au ppb	Pt ppb	Pd ppb	Rh ppb	Au oz/ton
Assay Analysis					
Sample # 58	>10000	506	<5	<5	2.211
Sample # 59	<5	<5	<5	<5	---
Sample # 60	34	<5	<5	<5	---
Sample # 61	38	24	<5	<5	---
Sample # 62	52	14	<5	<5	---
Sample # 63	368	15	<5	<5	---
Sample # 64	44	<5	<5	<5	---
Sample # 65	8	<5	<5	<5	---
Sample # 65 Recut	<5	<5	<5	<5	---
Sample # 58 ck	>10000	482	<5	<5	2.344
Std. - 1802	1854				
BIK	<5		<5	<5	
Methodology:	Au,Pd,Pt,Rh- 30 gram Fire Assay with AA and ICP finish				
Received date:	June 10, 2013				

I HEREBY CERTIFY that the above results are those assays made by me upon the herein described samples:

Certified by: _____



Loring Laboratories (Alberta) Ltd.

629 Beaverdam Road N.E.,
Calgary Alberta T2K 4W7
Tel: 274-2777 Fax: 275-0541
loringlabs@telus.net

ISO9001:2008 Certified

TO: Wood Group Exploration Ltd.

File No : 5 6 5 2 0
Date : June 27, 2013
Samples: Rock

Certificate of Assay

Attn: Jason Wood

Sample ID	Au ppb	Pt ppb	Pd ppb	Rh ppb	Au oz/ton
<u>Assay Analysis</u>					
Sample # 58	>10000	506	<5	<5	2.211
Sample # 59	<5	<5	<5	<5	---
Sample # 60	34	<5	<5	<5	---
Sample # 61	38	24	<5	<5	---
Sample # 62	52	14	<5	<5	---
Sample # 63	368	15	<5	<5	---
Sample # 64	44	<5	<5	<5	---
Sample # 65	8	<5	<5	<5	---
Sample # 65 Recut	<5	<5	<5	<5	---
Sample # 58 ck	>10000	482	<5	<5	2.344
Std. - 1802	1854				
Blk	<5		<5	<5	
Methodology:	Au,Pd,Pt,Rh- 30 gram Fire Assay with AA and ICP finish				
Received date:	June 10, 2013				

I HEREBY CERTIFY that the above results are those assays made by me upon the herein described samples:

Certified by: _____

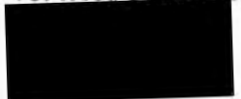
FORM ASYC-015



Loring Laboratories (Alberta) Ltd.
 629 Beaverdam Road N.E.,
 Calgary Alberta T2K 4W7
 Tel: 403-274-2777 Fax:403- 275-0541

ISO9001:2008 Certified

TO: Wood Group Exploration Ltd.



Attn: Jason Wood

File No : 5 6 5 2 0

Date : June 20/2013

Sample : Rocks

30ELEMENT ICP ANALYSIS

Sample No.	Ag ppm	Al %	As ppm	B ppm	Ba ppm	Bi ppm	Ca %	Cd ppm	Co ppm	Cr ppm	Cu ppm	Fe %	K %	La ppm	Mg %	Mn ppm	Mo ppm	Na %	Ni ppm	P %	Pb ppm	Sb ppm	Sr ppm	Th ppm	Ti %	U ppm	V ppm	W ppm	Zn ppm	Zr ppm
58	10.0	4.57	48	602	570	1	2.50	4	82	675	18	25.37	0.07	1084	0.69	9551	3	0.20	8	0.18	72	18	31	306	6.87	<1	617	4	156	686
59	4.0	2.77	59	19	816	140	0.85	8	<1	33	19	39.40	0.59	1	0.47	7994	7	0.25	51	0.18	17	21	62	291	0.08	<1	137	3	132	33
60	6.0	0.20	1	1763	19	3	23.31	<1	<1	30	<1	0.30	0.08	5	13.52	349	<1	0.25	2	<0.01	13	1	49	<1	0.01	<1	10	2	21	22
61	0.5	0.03	<1	24	18	11	0.03	<1	2	126	2	2.49	0.01	<1	0.02	17	1	0.01	13	<0.01	5	3	2	22	<0.01	2	2	1	1	2
62	4.5	1.01	2	19	264	9	9.84	<1	1	18	16	1.69	0.16	1	0.61	4763	1	0.01	18	0.05	7	1	69	15	0.01	<1	24	1	44	4
63	0.5	0.11	1	23	43	7	0.79	<1	<1	100	6	1.79	0.03	<1	0.05	559	1	0.02	7	0.01	13	2	12	22	<0.01	<1	3	1	23	3
64	1.0	0.18	<1	22	52	3	1.85	<1	<1	136	1	0.89	0.13	4	1.05	448	1	0.01	5	0.01	6	2	68	8	<0.01	<1	2	<1	4	1
65	0.5	0.01	267	36	68	2	0.16	<1	<1	68	1	0.57	<0.01	<1	0.01	150	1	0.01	4	<0.01	5	2	11	5	<0.01	<1	1	1	9	<1
65 Recut	0.5	0.01	267	33	68	3	0.15	<1	<1	65	<1	0.55	<0.01	<1	0.01	146	1	0.01	3	<0.01	4	2	11	5	<0.01	<1	1	1	10	<1

* Sample # 58, 59, 60 - total digested with multi acid, icp finish.

* # 61, 62, 63, 64, 65 - 0.500 Gram sample digested with Aqua Regia at 95C for three hours and bulked to 25 ml with distilled water.
 Partial dissolution for Al, B, Ba, Ca, Cr, Fe, K, La, Mg, Mn, Na, P, Sr, Ti and W.

Sample received on June 10, 2013

Certified by: 



Loring Laboratories (Alberta) Ltd.

629 BEAVERDAM ROAD N.E., CALGARY, ALBERTA T2K 4W7
Tel: (403) 274-2777 Fax: (403) 275-0541 Email: loringlabs@telus.net
G.S.T. No. 828261859 RT0001



INVOICE

58013

TO: WOOD GROUP EXPLORATION LTD



DATE: December 24, 2014

Attn: Jason Wood

Rock Samples

8	Log In Fee	\$ 0.50	\$ 4.00
8	Rehomogenize Samples	\$ 1.25	\$ 10.00
8	Rare Earth Elements	\$ 60.00	\$ 480.00
	Subtotal		\$ 494.00
		GST	\$ 24.70
	TERMS - 30 days	TOTAL	\$ 518.70

THIS IS YOUR INVOICE, PLEASE PAY THE AMOUNT SHOWN



301-9901-2006 (encl. 1)

Loring Laboratories (Alberta) Ltd.
629 Beaverdam Road N.E.,
Calgary Alberta T2K 4W7
Tel: 403-274-2777 Fax: 403-275-0541

TO: Wood Group Exploration Ltd.

FILE: 5 8 0 1 3

DATE: Dec 23, 2014

Attn: Jason Wood

RARE EARTH ANALYSIS

Sample Type: Conc. sand

Sample I.D.	CeO ₂ ppm	Dy ₂ O ₃ ppm	Er ₂ O ₃ ppm	Eu ₂ O ₃ ppm	Gd ₂ O ₃ ppm	Ho ₂ O ₃ ppm	La ₂ O ₃ ppm	Lu ₂ O ₃ ppm	Nd ₂ O ₃ ppm	Pr6O11 ppm	Sm ₂ O ₃ ppm	Tb ₄ O ₇ ppm	Tm ₂ O ₃ ppm	Y ₂ O ₃ ppm	Yb ₂ O ₃ ppm
Sample #49	46	19	3	1	8	<1	25	1	76	10	12	1	<1	15	2
Sample #50	49	7	4	1	6	<1	25	1	61	10	12	<1	<1	11	1
Sample #51	28	2	4	<1	7	<1	7	1	37	4	9	<1	<1	7	1
Sample #52	33	4	4	<1	8	<1	13	1	43	6	9	<1	<1	12	1
Sample #53	34	4	4	<1	9	<1	13	1	47	7	10	<1	1	12	1
Sample #54	31	3	5	<1	8	<1	10	1	46	5	10	<1	1	11	1
Sample #56	24	8	4	<1	17	<1	2	2	32	<1	<1	<1	8	10	2
Sample #58	1100	1040	<1	23	<1	<1	970	10	1913	215	81	50	<1	273	36
Ck Sample #66	62	24	3	1	9	<1	39	1	97	12	13	<1	<1	19	2

0.3g Sample fusion with Lithium metaborate and bulk to 100 ml, ICP finish

Sample received on Dec 08, 2014

Certified by: 



ISO 9001:2008 Certified

Loring Laboratories (Alberta) Ltd.
629 Beaverdam Road N.E.,
Calgary Alberta T2K 4W7
Tel: 403-274-2777 Fax: 403-275-0541

TO: Wood Group Exploration Ltd.

FILE: 5 8 0 1 3

DATE: Dec 23, 2014

Attn: Jason Wood

RARE EARTH ANALYSIS

Sample Type: Conc. sand

Sample I.D.	CeO ₂ ppm	Dy ₂ O ₃ ppm	Er ₂ O ₃ ppm	Eu ₂ O ₃ ppm	Gd ₂ O ₃ ppm	Ho ₂ O ₃ ppm	La ₂ O ₃ ppm	Lu ₂ O ₃ ppm	Nd ₂ O ₃ ppm	Pr6O11 ppm	Sm ₂ O ₃ ppm	Tb ₄ O ₇ ppm	Tm ₂ O ₃ ppm	Y ₂ O ₃ ppm	Yb ₂ O ₃ ppm
Sample #49	46	19	3	1	8	<1	25	1	76	10	12	1	<1	15	2
Sample #50	49	7	4	1	6	<1	25	1	61	10	12	<1	<1	11	1
Sample #51	28	2	4	<1	7	<1	7	1	37	4	9	<1	<1	7	1
Sample #52	33	4	4	<1	8	<1	13	1	43	6	9	<1	<1	12	1
Sample #53	34	4	4	<1	9	<1	13	1	47	7	10	<1	1	12	1
Sample #54	31	3	5	<1	8	<1	10	1	46	5	10	<1	1	11	1
Sample #56	24	8	4	<1	17	<1	2	2	32	<1	<1	<1	8	10	2
Sample #58	1100	1040	<1	23	<1	<1	970	10	1913	215	81	50	<1	273	36
Ck Sample #66	62	24	3	1	9	<1	39	1	97	12	13	<1	<1	19	2

0.3g Sample fusion with Lithium metaborate and bulk to 100 ml, ICP finish

Sample received on Dec 08, 2014

Certified by: _____





Loring Laboratories (Alberta) Ltd.

629 Beaverdam Road N.E.,
Calgary Alberta T2K 4W7
Tel: 274-2777 Fax: 275-0541
loringlabs@telus.net

ISO9001:2008 Certified

TO: Wood Group Exploration Ltd.

File No : 5 8 0 1 4

Date : December 23, 2014

Sample Type: Conc. sand

Certificate of Assay

Attn: Jason Wood

Sample ID	Au ppb	Ag ppm	Pd ppb	Pt ppb	Rh ppb
Assay Analysis					
Sample # 66	7657*	12.0	<5	<5	<5
Sample # 67	>10000*	282.0	<5	41	<5
Sample # 68	<5	6.0	<5	<5	<5
Sample # 69	>10000*	22.0	37	563	6
Sample # 70	<5	40.0	<5	<5	<5
Sample # 71	<5	4.0	<5	<5	<5
Blk	<5	<0.5	<5	<5	<5
Methodology:	Au,Pd,Pt,Rh- 30 gram Fire Assay with AA and ICP finish Ag-HNO3 digestion with AA finish. * Analyzed using coarse gold method				
Received date:	Dec 08/2014				

I HEREBY CERTIFY that the above results are those assays made by me upon the herein described samples:

Assayer

FORM ASYC-015



LORING LABORATORIES (ALBERTA) LTD.

629 Beaverdam Road N.E. Calgary, Alberta T2K 4W7

Tel : (403) 274-2777 Fax : (403) 275-0541

Email: loringlabs@telus.net www.loringlabs.net

ISO 9001:2008 Certified

TO: Wood Group Exploration Ltd.

File No : 58014

Date : December 23, 2014

Sample Type: Conc. sand

Attn: Jason Wood

Certificate of Assay

Sample No.	Wt %	Au gm/tonne	Calculated Head
"Coarse Gold Analysis"			
<u>Sample #66</u>			
+140 M	11.46	40.63	
-140 M	88.54	3.39	gm/tonne 7.66
<u>Sample #67</u>			
+140 M	9.88	99.96	
-140 M	90.12	5.79	gm/tonne 15.09
<u>Sample #69</u>			
+140 M	9.64	680.52	
-140 M	90.36	27.27	gm/tonne 90.24
Coarse gold analyzed by sieving out + and - 140 mesh material and analyzed separately by Fire Assay and Gravimetric finish.			
Received date:	Dec 08/2014		

I HEREBY CERTIFY that the above results are those assays made by me upon the herein described samples:

Assayer

Rejects and pulps are retained for one month unless specific arrangements are made in advance.

FORM ASYC-015



Loring Laboratories (Alberta) Ltd.

629 Beaverdam Road N.E.,
 Calgary Alberta T2K 4W7
 Tel: 274-2777 Fax: 275-0541
 loringlabs@telus.net

TO: Wood Group Exploration Ltd.

FILE: 5 8 0 1 4

DATE: Dec 23, 2014

Attn: Jason Wood

30 ELEMENT ICP ANALYSIS

Sample Type: Conc. sand

Sample No.	Ag ppm	Al %	As ppm	B ppm	Ba ppm	Bi ppm	Ca %	Cd ppm	Co ppm	Cr ppm	Cu ppm	Fe %	K %	La ppm	Mg %	Mn ppm	Mo ppm	Na %	Ni ppm	P %	Pb ppm	Sb ppm	Sr ppm	Th ppm	Ti %	U ppm	V ppm	W ppm	Zn ppm	Zr ppm
Sample #66	12	5.83	41	1500	3710	10	2.61	15	92	666	<1	15.56	0.32	845	0.75	10800	4	0.41	<1	0.16	173	7	174	224	3	<1	409	5	111	418
Sample #67	282	5.88	55	1936	3314	14	3.79	18	119	1103	<1	16.96	0.24	801	0.76	9775	5	0.39	<1	0.29	55	6	224	245	<1	<1	528	6	142	558
Sample #68	6	6.59	8	1560	960	6	2.21	2	13	124	10	2.58	1.53	26	0.91	747	2	1.63	8	0.06	39	4	241	27	0	<1	76.1	3	74	75
Sample #69	22	1.58	23	2110	237	35	0.64	28	245	992	<1	23.46	0.04	652	0.55	7214	3	0.22	<1	0.17	330	<1	21	298	<1	<1	1137	5	213	1357
Sample #70	40	5.16	5	953	831	3	0.42	1	8	142	<1	1.68	1.34	17	0.40	270	2	1.23	2	0.04	10	3	169	18	0	<1	54.2	2	33	51
Sample #71	4	4.06	5	776	847	2	1.01	1	7	127	<1	1.51	1.15	14	0.47	328	2	1.03	7	0.04	9	3	144	16	0	<1	54.4	2	32	46
Blk	<0.5	<0.01	<1	<1	<1	<1	<0.01	<1	<1	<1	<1	<0.01	<0.01	<1	<0.01	<1	<1	<0.01	<1	<0.01	<1	<1	<1	<1	<0.01	<1	<1	<1	<1	<1

0.500 Gram sample is near total digested with multi acid and finished by ICP.

Samples received on: Dec 08, 2014

Certified by: _____



hl



ISO 9001:2008 Certified

Loring Laboratories (Alberta) Ltd.
629 Beaverdam Road N.E.,
Calgary Alberta T2K 4W7
Tel: 403-274-2777 Fax: 403-275-0541

TO: Wood Group Exploration Ltd.

FILE: 5 8 0 1 4

DATE: Dec 23, 2014

Attn: Jason Wood

RARE EARTH ANALYSIS

Sample Type: Conc. sand

Sample I.D.	CeO ₂ ppm	Dy ₂ O ₃ ppm	Er ₂ O ₃ ppm	Eu ₂ O ₃ ppm	Gd ₂ O ₃ ppm	Ho ₂ O ₃ ppm	La ₂ O ₃ ppm	Lu ₂ O ₃ ppm	Nd ₂ O ₃ ppm	Pr ₆ O ₁₁ ppm	Sm ₂ O ₃ ppm	Tb ₄ O ₇ ppm	Tm ₂ O ₃ ppm	Y ₂ O ₃ ppm	Yb ₂ O ₃ ppm
Sample #66	1138	366	<1	21	130	<1	892	7	1494	183	76	20	<1	234	26
Sample #67	1015	575	<1	20	<1	<1	829	7	1563	180	71	28	<1	226	27
Sample #68	41	11	4	1	9	<1	24	1	61	7	10	<1	<1	15	2
Sample #69	446	2083	<1	19	<1	<1	567	13	1950	171	49	104	<1	251	43
Sample #70	28	5	3	<1	4	<1	8	<1	35	6	10	<1	<1	6	1
Sample #71	27	2	4	<1	4	<1	6	<1	29	5	10	<1	<1	7	1
Ck Sample #66	1193	381	<1	22	137	<1	952	7	1565	194	79	20	<1	237	27

0.3g Sample fusion with Lithium metaborate and bulk to 100 ml, ICP finish

Sample received on Dec 08, 2014

Certified by:





Loring Laboratories (Alberta) Ltd.

629 Beaverdam Road N.E.,
Calgary Alberta T2K 4W7
Tel: 274-2777 Fax: 275-0541
loringlabs@telus.net

ISO9001:2008 Certified

TO: Wood Group Exploration Ltd.

File No : 5 8 0 1 4

Date : December 23, 2014

Sample Type: Conc. sand

Certificate of Assay

Attn: Jason Wood

Sample ID	Au ppb	Ag ppm	Pd ppb	Pt ppb	Rh ppb
<u>Assay Analysis</u>					
Sample # 66	7657*	12.0	<5	<5	<5
Sample # 67	>10000*	282.0	<5	41	<5
Sample # 68	<5	6.0	<5	<5	<5
Sample # 69	>10000*	22.0	37	563	6
Sample # 70	<5	40.0	<5	<5	<5
Sample # 71	<5	4.0	<5	<5	<5
Blk	<5	<0.5	<5	<5	<5
Methodology:	Au,Pd,Pt,Rh- 30 gram Fire Assay with AA and ICP finish Ag-HNO3 digestion with AA finish. * Analyzed using coarse gold method				
Received date:	Dec 08/2014				

I HEREBY CERTIFY that the above results are those assays made by me upon the herein described samples:

[Redacted Signature]

Assayer

FORM ASYC-015



LORING LABORATORIES (ALBERTA) LTD.

629 Beaverdam Road N.E. Calgary, Alberta T2K 4W7

Tel : (403) 274-2777 Fax : (403) 275-0541

Email: loringlabs@telus.net www.loringlabs.net

ISO 9001:2008 Certified

TO: Wood Group Exploration Ltd.

File No : 5 8 0 1 4

Date : December 23, 2014

Sample Type: Conc. sand

Attn: Jason Wood

Certificate of Assay

Sample No.	Wt %	Au gm/tonne	Calculated Head
"Coarse Gold Analysis"			
<u>Sample #66</u>			
+140 M	11.46	40.63	
-140 M	88.54	3.39	
			gm/tonne 7.66
<u>Sample #67</u>			
+140 M	9.88	99.96	
-140 M	90.12	5.79	
			gm/tonne 15.09
<u>Sample #69</u>			
+140 M	9.64	680.52	
-140 M	90.36	27.27	
			gm/tonne 90.24
Coarse gold analyzed by sieving out + and - 140 mesh material and analyzed separately by Fire Assay and Gravimetric finish.			
Received date:	Dec 08/2014		

I HEREBY CERTIFY that the above results are those assays made by me upon the herein described samples:

Assayer

Rejects and pulps are retained for one month unless specific arrangements are made in advance.

FORM ASYC-015



Loring Laboratories (Alberta) Ltd.

629 Beaverdam Road N.E.,
 Calgary Alberta T2K 4W7
 Tel: 274-2777 Fax: 275-0541
 loringlabs@telus.net

Client: Wood Group Exploration Ltd.

FILE: 5 8 0 1 4

DATE: Dec 23, 2014

Analyst: Jason Wood

30 ELEMENT ICP ANALYSIS

Sample Type: Conc. sand

Sample No.	Ag ppm	Al %	As ppm	B ppm	Ba ppm	Bi ppm	Ca %	Cd ppm	Co ppm	Cr ppm	Cu ppm	Fe %	K %	La ppm	Mg %	Mn ppm	Mo ppm	Na %	Ni ppm	P %	Pb ppm	Sb ppm	Sr ppm	Th ppm	Ti %	U ppm	V ppm	W ppm	Zn ppm	Zr ppm
Sample #66	12	5.83	41	1500	3710	10	2.61	15	92	666	<1	15.56	0.32	845	0.75	10800	4	0.41	<1	0.16	173	7	174	224	3	<1	409	5	111	418
Sample #67	282	5.88	55	1936	3314	14	3.79	18	119	1103	<1	16.96	0.24	801	0.76	9775	5	0.39	<1	0.29	55	6	224	245	<1	<1	528	6	142	558
Sample #68	6	6.59	8	1560	960	6	2.21	2	13	124	10	2.58	1.53	26	0.91	747	2	1.63	8	0.06	39	4	241	27	0	<1	76.1	3	74	75
Sample #69	22	1.58	23	2110	237	35	0.64	28	245	992	<1	23.46	0.04	652	0.55	7214	3	0.22	<1	0.17	330	<1	21	298	<1	<1	1137	5	213	1357
Sample #70	40	5.16	5	953	831	3	0.42	1	8	142	<1	1.68	1.34	17	0.40	270	2	1.23	2	0.04	10	3	169	18	0	<1	54.2	2	33	51
Sample #71	4	4.06	5	776	847	2	1.01	1	7	127	<1	1.51	1.15	14	0.47	328	2	1.03	7	0.04	9	3	144	16	0	<1	54.4	2	32	46
;	<0.5	<0.01	<1	<1	<1	<1	<0.01	<1	<1	<1	<1	<0.01	<0.01	<1	<0.01	<1	<1	<0.01	<1	<0.01	<1	<1	<1	<1	<0.01	<1	<1	<1	<1	<1

0.500 Gram sample is near total digested with multi acid and finished by ICP.

Samples received on: Dec 08, 2014

Certified by: _____





ISO 9001:2008 Certified

Loring Laboratories (Alberta) Ltd.
629 Beaverdam Road N.E.,
Calgary Alberta T2K 4W7
Tel: 403-274-2777 Fax: 403-275-0541

TO: Wood Group Exploration Ltd.

FILE: 5 8 0 1 4

DATE: Dec 23, 2014

Attn: Jason Wood

RARE EARTH ANALYSIS

Sample Type: Conc. sand

Sample I.D.	CeO ₂ ppm	Dy ₂ O ₃ ppm	Er ₂ O ₃ ppm	Eu ₂ O ₃ ppm	Gd ₂ O ₃ ppm	Ho ₂ O ₃ ppm	La ₂ O ₃ ppm	Lu ₂ O ₃ ppm	Nd ₂ O ₃ ppm	Pr6O11 ppm	Sm ₂ O ₃ ppm	Tb ₄ O ₇ ppm	Tm ₂ O ₃ ppm	Y ₂ O ₃ ppm	Yb ₂ O ₃ ppm
Sample #66	1138	366	<1	21	130	<1	892	7	1494	183	76	20	<1	234	26
Sample #67	1015	575	<1	20	<1	<1	829	7	1563	180	71	28	<1	226	27
Sample #68	41	11	4	1	9	<1	24	1	61	7	10	<1	<1	15	2
Sample #69	446	2083	<1	19	<1	<1	567	13	1950	171	49	104	<1	251	43
Sample #70	28	5	3	<1	4	<1	8	<1	35	6	10	<1	<1	6	1
Sample #71	27	2	4	<1	4	<1	6	<1	29	5	10	<1	<1	7	1
Ck Sample #66	1193	381	<1	22	137	<1	952	7	1565	194	79	20	<1	237	27

0.3g Sample fusion with Lithium metaborate and bulk to 100 ml, ICP finish

Sample received on Dec 08, 2014

Certified by: _____



19