

# MAR 20140011: COUGAR CREEK

Received date: October 27, 2014

Public release date: August 25, 2015

## **DISCLAIMER**

By accessing and using the Alberta Energy website to download or otherwise obtain a scanned mineral assessment report, you ("User") agree to be bound by the following terms and conditions:

- a) Each scanned mineral assessment report that is downloaded or otherwise obtained from Alberta Energy is provided "AS IS", with no warranties or representations of any kind whatsoever from Her Majesty the Queen in Right of Alberta, as represented by the Minister of Energy ("Minister"), expressed or implied, including, but not limited to, no warranties or other representations from the Minister, regarding the content, accuracy, reliability, use or results from the use of or the integrity, completeness, quality or legibility of each such scanned mineral assessment report;
- b) To the fullest extent permitted by applicable laws, the Minister hereby expressly disclaims, and is released from, liability and responsibility for all warranties and conditions, expressed or implied, in relation to each scanned mineral assessment report shown or displayed on the Alberta Energy website including but not limited to warranties as to the satisfactory quality of or the fitness of the scanned mineral assessment report for a particular purpose and warranties as to the non-infringement or other non-violation of the proprietary rights held by any third party in respect of the scanned mineral assessment report;
- c) To the fullest extent permitted by applicable law, the Minister, and the Minister's employees and agents, exclude and disclaim liability to the User for losses and damages of whatsoever nature and howsoever arising including, without limitation, any direct, indirect, special, consequential, punitive or incidental damages, loss of use, loss of data, loss caused by a virus, loss of income or profit, claims of third parties, even if Alberta Energy have been advised of the possibility of such damages or losses, arising out of or in connection with the use of the Alberta Energy website, including the accessing or downloading of the scanned mineral assessment report and the use for any purpose of the scanned mineral assessment report so downloaded or retrieved.
- d) User agrees to indemnify and hold harmless the Minister, and the Minister's employees and agents against and from any and all third party claims, losses, liabilities, demands, actions or proceedings related to the downloading, distribution, transmissions, storage, redistribution, reproduction or exploitation of each scanned mineral assessment report obtained by the User from Alberta Energy.

OCT 27 2014  
20140011

I

ASSESSMENT REPORT

PART " B "

" COUGAR CREEK PROJECT "

VALMOND CHIASSON

METALLIC INDUSTRIAL MINERALS

PERMIT NO. 0939312080462

SUBMITTED BY;

VALMOND CHIASSON

OCTOBER 24, 2014

[REDACTED]

VALMOND CHIASSON

*Oct 24/2014*

October 24, 2014



# TABLE OF CONTENTS

## II

### PART " B "

TITLE PAGE	-----	I
TABLE OF CONTENTS	-----	II
SUMMARY	-----	1
INTRODUCTION	-----	1
WORK PERFORMED	-----	2-3
QUALIFICATION	-----	4
RESULTS	-----	4-5
CONCLUSION	-----	5
ACMELabs certificate of analysis	-----	6-7-8
BREAKDOWN STATEMENT	-----	9

## SUMMARY

I am the rediscoverer of the Lost Lemon Mine . I have taken thousand of photos of this site which is located in Jasper National park . I have shown this site to a couple of park officials , these park officials came to the site with me so I could show them the “ five foot quartz veins “ and the “vein of molten material “ . They said “ have been to this site hundreds of times and never seen any of these anomalies” Mother Nature has a way with camouflaging these anomalies. This site has brought me to my permitted claimed land in search of this molten material

To date , 8 % of area has been prospected with positive results

## INTRODUCTION

Using my eight wheel argo to transport my prospecting equipment to the prospecting areas, Upon arriving at the prospecting areas.I set off fireworks to scare away predators . I set the gold king hibanker sluice at a predetermined angle to process shovel full's of gravel to recover any metallic minerals

## WORK PERFORMED

The prospecting areas are noted on the attached maps

The argo trails maps are noted on the attached maps

The gold king is 5 ft long and 18 inches wide

First I needed to make trails to the prospecting areas this involve clearing all dead fall to allow the argo trail to gain access

Each visit I set the water pump up at the water source running the water line 100ft to500 ft from the water source, attach the water line to the grizzly bar area on the gold king hibanker sluice . Set the proper angle and proceed to shovel the material in the grizzly bar area, this washes the material and expels anything bigger than 1 inch . The material is washed down multiple rifles with miners moss beneath to trap metallic minerals



“ 3 “

After running material for the day I take out the miners moss and wash all the concentrated material out of it into a tub .I then take the concentrated material and put small amounts in my garrett gold pan and pan the material down to show the metallic minerals & molten material

I then send samples of molten material to ACME laboratories for FA330 fire assay & AQ250 aqua digest assay

The above noted work was done by myself (Valmond Chiasson) during a number of week trips and a number of weekend trips to the prospecting areas

Travel was by Motor home& trailer, Truck& trailer and argo at various times in May, June , July , August ,September ,October & November 2012 / 2013 / 2014



Valmond Chiasson

*Oct 24/2014*

October 24 2014

“ 4 “

Valmond Chiasson

[REDACTED]

[REDACTED]

[REDACTED]

Phone

[REDACTED]

### QUALIFICATIONS

- \* Prospector for 4years
- \* Rediscover of the lost lemon mine 8 years ago
- \* Amateur fossil collector for 28 year
- \* Amateur photographer 8years
- \* Journeyman Electrician 30 years
- \* Have found lost metallic items

### RESULTS

ACME Labs Certificate of analysis attached

Prospecting area # 1 Rock chip samples 001 / 002 / 006 rock chip sample 006 has 1702.5 ppb AU recovery from gold king small amounts of gold dust and flower & one garnet.05 karat I prospected this area in July, August 2012



“ 5 “

Prospecting area # 2 Rock chip sample 003 / 004 / 007 / 008 / recovery from gold king small amounts of gold dust and gold flower prospected this area in September , October, November 2012

Prospecting area # 3 Rock chip sample 005 / 009 / 010 / 011 rock chip sample 005 has 14.5 g/ton AU this sample came from a 3 inch by 3 inch black vein in sandstone that was discovered .Recovery from gold king 40 colors , one small gold flake and three garnets .05 karat each . I prospected this area in May , June , July , August 2013

Prospecting area # 4 Recovery from gold king 30 colors .I prospected this area in September 2013

Prospecting area # 5 Recovery from gold king 60 colors , 10 small gold flakes , 30 medium gold flakes , 15 large gold flakes , three ballpoint pen gold nuggets, total weight of all gold combined .5g of gold and 100 garnets .05 karat each . I prospected this area in October , November 2013 & May , June , July 2014

### CONCLUSION

Apply for an MME Exploration approval to ascertain metallic minerals concentration levels

I am not requesting any cancellation of amendments

  
Valmond Chiasson

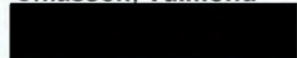
Oct 24/2014  
October 24 2014





www.acmelab.com

Client: Chiasson, Valmond



Project: Cougar Creek  
Report Date: May 14, 2014

Acme Analytical Laboratories (Vancouver) Ltd.  
9050 Shaughnessy St Vancouver BC V6P 6E5 CANADA  
PHONE (604) 253-3158

Page: 2 of 2 Part: 1 of 3

CERTIFICATE OF ANALYSIS

VAN14001318.1

Method	WGHT	FA330	FA330	FA330	AQ250	AQ250	AQ250	AQ250	AQ250	AQ250	AQ250	AQ250	AQ250	AQ250	AQ250	AQ250	AQ250	AQ250	AQ250	AQ250	
Analyte	Wgt	Au	Pt	Pd	Mo	Cu	Pb	Zn	Ag	Ni	Co	Mn	Fe	As	U	Au	Th	Sr	Cd	Sb	
Unit	kg	ppb	ppb	ppb	ppm	ppm	ppm	ppm	ppb	ppm	ppm	ppm	%	ppm	ppm	ppb	ppm	ppm	ppm	ppm	
MDL	0.01	2	3	2	0.01	0.01	0.01	0.1	2	0.1	0.1	1	0.01	0.1	0.05	0.2	0.1	0.5	0.01	0.02	
001	Rock	0.09	3	<3	<2																
002	Rock Chip	0.06	1395	<3	2																
003	Rock Chip	0.07	45	9	7																
004	Rock Chip	0.07	40	12	3																
005	Rock Chip	0.04	>10000	<3	10																
006	Rock Chip	<0.01				2.20	3788.71	110.71	161.1	2289	69.8	60.2	119	26.92	1065.7	0.63	1702.5	3.4	11.5	0.24	5.69
007	Rock Chip	<0.01				1.94	21.98	255.48	125.5	1933	139.0	205.5	60	39.38	562.3	3.16	<0.2	3.2	2.9	3.95	2.07
008	Rock Chip	<0.01				3.01	37.43	55.74	40.3	329	63.1	149.3	138	>40	228.7	0.55	17.0	3.3	2.8	0.16	1.16
009	Rock Chip	<0.01				141.54	18.61	11.52	21.4	50	74.2	14.1	81	>40	8513.8	0.17	4.1	0.2	4.8	0.47	47.09
010	Rock Chip	<0.01				2.83	54.48	7.22	27.5	59	13.5	9.5	239	2.66	7.0	1.05	2.9	0.8	24.9	0.16	0.26
011	Rock Chip	<0.01				3.31	9.39	9.87	33.5	58	18.0	5.1	262	2.74	15.4	0.73	2.4	3.2	18.5	0.07	0.21



www.acmelab.com

Client: **Chiasson Valmond**  
[REDACTED]

Project: Cougar Creek  
 Report Date: May 14, 2014

Acme Analytical Laboratories (Vancouver) Ltd.  
 9050 Shaughnessy St Vancouver BC V6P 6E5 CANADA  
 PHONE (604) 253-3158

Page: 2 of 2 Part: 2 of 3

**CERTIFICATE OF ANALYSIS**

**VAN14001318.1**

Method	AQ250	AQ250	AQ250	AQ250	AQ250	AQ250	AQ250	AQ250	AQ250	AQ250	AQ250	AQ250	AQ250	AQ250	AQ250	AQ250	AQ250	AQ250	AQ250	AQ250	AQ250
Analyte	Bi	V	Ca	P	La	Cr	Mg	Ba	Tl	B	Al	Na	K	W	Sc	Tl	S	Hg	Se	Te	
Unit	ppm	ppm	%	%	ppm	ppm	%	ppm	%	ppm	%	%	%	ppm	ppm	ppm	%	ppb	ppm	ppm	
MDL	0.02	2	0.01	0.001	0.5	0.5	0.01	0.5	0.001	20	0.01	0.001	0.01	0.05	0.1	0.02	0.02	5	0.1	0.02	
001	Rock																				
002	Rock Chip																				
003	Rock Chip																				
004	Rock Chip																				
005	Rock Chip																				
006	Rock Chip	11.56	6	0.03	0.012	7.0	14.7	0.09	5.9	0.001	<20	0.70	0.030	0.30	0.12	1.0	0.10	>10	80	21.7	1.24
007	Rock Chip	5.03	<2	0.02	0.002	1.2	211.4	<0.01	2.7	<0.001	<20	<0.01	0.005	<0.01	0.21	<0.1	0.02	>10	60	70.8	1.49
008	Rock Chip	3.26	4	<0.01	0.002	4.1	28.1	0.03	12.7	0.002	<20	0.16	0.013	0.07	0.18	0.3	0.02	>10	<5	5.7	0.95
009	Rock Chip	0.07	27	0.06	0.009	<0.5	317.3	0.02	3.1	0.009	<20	0.04	0.006	0.01	0.60	0.3	8.38	>10	2796	89.2	0.07
010	Rock Chip	0.23	14	0.37	0.022	23.7	19.8	0.33	50.8	0.077	<20	0.87	0.213	0.27	0.21	2.9	0.14	0.39	<5	<0.1	<0.02
011	Rock Chip	0.06	12	0.27	0.003	4.1	344.2	0.40	45.2	0.066	<20	1.10	0.175	0.15	0.35	5.9	0.09	0.14	10	0.4	<0.02

This report supersedes all previous preliminary and final reports with this file number dated prior to the date on this certificate. Signature indicates final approval; preliminary reports are unsigned and should be used for reference only.





www.acmelab.com

Client: Chiasson, Valmond

Project: Cougar Creek

Report Date: May 14, 2014

Acme Analytical Laboratories (Vancouver) Ltd.

9050 Shaughnessy St Vancouver BC V6P 6E5 CANADA

PHONE (604) 253-3158

Page: 2 of 2

Part: 3 of 3

CERTIFICATE OF ANALYSIS

VAN14001318.1

Method	AQ250	AQ250	AQ250	AQ250	AQ250	AQ250	AQ250	AQ250	AQ250	AQ250	AQ250	AQ250	AQ250	AQ250	AQ250	AQ250	AQ250	FA530	
Analyte	Ga	Cs	Ge	Hf	Nb	Rb	Sn	Ta	Zr	Y	Ce	In	Re	Be	Li	Pd	Pt	Au	
Unit	ppm	ppm	ppm	ppm	ppm	ppm	ppm	ppm	ppm	ppm	ppm	ppm	ppb	ppm	ppm	ppb	ppb	gm/t	
MDL	0.1	0.02	0.1	0.02	0.02	0.1	0.1	0.05	0.1	0.01	0.1	0.02	1	0.1	0.1	10	2	0.9	
001	Rock																		
002	Rock Chip																		
003	Rock Chip																		
004	Rock Chip																		
005	Rock Chip																		14.5
006	Rock Chip	1.7	0.34	0.1	0.07	0.39	12.6	1.3	<0.05	1.9	0.79	12.3	0.15	<1	0.3	12.4	<10	<2	
007	Rock Chip	0.2	<0.02	0.1	0.03	0.20	0.2	0.4	<0.05	1.1	0.70	2.2	0.07	<1	<0.1	<0.1	<10	<2	
008	Rock Chip	0.6	0.12	0.2	0.05	1.04	2.5	1.0	<0.05	1.7	0.93	7.2	0.04	<1	<0.1	1.9	11	2	
009	Rock Chip	0.6	0.08	2.2	0.05	0.24	0.5	0.7	<0.05	3.8	0.58	0.8	<0.02	33	<0.1	0.5	25	4	
010	Rock Chip	4.2	0.48	0.1	0.64	0.12	18.1	1.4	<0.05	20.6	6.30	36.3	<0.02	<1	0.5	9.0	<10	4	
011	Rock Chip	8.9	0.41	<0.1	0.26	0.81	6.3	1.0	<0.05	5.1	3.15	9.5	<0.02	2	0.8	56.8	<10	4	

BREAKDOWN STATEMENT

PROSPECTING	\$ 77025.00
Assaying & Whole rock analysis	\$ 330.00
SUB Total	\$ 77355.00
<i>administration @ 10 %</i>	\$ 7735.50
Total	\$ 85090.50

in 2012 / 2013 / 2014 this work was done during May , June ,  
July , August , September , October and November

PROJECT NAME

COUGAR CREEK PROJECT NO 0939312080462



New pages for Part B  
20140011

## EXPENDITURE STATEMENT

### EXPLORATION EQUIPMENT

*	2010HDI 8 Wheel ARGO	28500.00
*	Sport Club trailer	1500.00
*	Gold King Hibanker Sluice	1300.00
*	STIHL MS 280 Chainsaw	695.00
*	Gas Water Pump	250.00
*	700 ft 2" Waterline	770.00
*	3000 Watt Gas Generator	350.00
*	2 Head 500w quartz lights on stands x 2	180.00
*	shovel	20.00
*	pick axe	60.00
*	150 ft of extension cords	60.00
*	Garrett Gold pan	50.00
*	Garrett bucket filter screens x 3 sizes	90.00
*	Garrett concentrate bottle	15.00
*	10 plastic pails	50.00
*	½ ton steel rope cummalong	90.00
*	Industrial rubber gloves x 2	40.00
*	Jewelers Loop	45.00
*	Fireworks	110.00
		34175.00
*	first assessment report 14.29%	
	Sub Total	4882.14



“ 4 “

Valmond Chiasson



Phone



### QUALIFICATIONS

- \* Prospector for 4years
- \* Rediscover of the lost lemon mine 8 years ago
- \* Amateur fossil collector for 28 year
- \* Amateur photographer 8years
- \* Journeyman Electrician 30 years
- \* Have found lost metallic items

### RESULTS

ACME Labs Certificate of analysis attached

Prospecting area # 1 location ne-13-58-20-5 Rock chip samples 001 / 002 / 006 rock chip sample 006 has 1702.5 ppb AU recovery from gold king small amounts of gold dust and flower & one garnet.05 karat I prospected this area in July, August 2012 travel 32hr, set up & dismantle 16hr, trails 7hr prospecting 41hr

Prospecting area # 2 location nw-12-58-20-5 Rock chip sample 003 / 004 / 007 / 008 / recovery from gold king small amounts of gold dust and gold flower prospected this area in September , October, November 2012 travel 40hr, set up & dismantle 20hr, trails 0hr,prospecting 60hr

Prospecting area # 3 location se-6-58-20-5 Rock chip sample 005 / 009 / 010 / 011 rock chip sample 005 has 14.5 g/ton AU this sample came from a 3 inch by 3 inch black vein in sandstone that was discovered .Recovery from gold king 40 colors , one small gold flake and three garnets .05 karat each . I prospected this area in May , June , July , August 2013 travel 100hr, set up & dismantle 40hr,trails 49hr, prospecting 99hr

Prospecting area # 4 location se-6-58-20-5 Recovery from gold king 30 colors .I prospected this area in September 2013 travel 20hr, set up & dismantle 8hr, trails 0hr, prospecting 20hr

Prospecting area # 5 location ne-6-58-20-5 Recovery from gold king 60 colors , 10 small gold flakes , 30 medium gold flakes , 15 large gold flakes , three ballpoint pen gold nuggets, total weight of all gold combined .5g of gold and 100 garnets .05 karat each . I prospected this area in October , November 2013 & May , June , July 2014 travel 70hr, set up & dismantle 28hr, trails 30hr, prospecting 57hr

#### CONCLUSION

Apply for an MME Exploration approval to ascertain metallic minerals concentration levels

I am not requesting any cancellation of amendments



Valmond Chiasson

Sept 21/2015  
September 21, 2015



## EXPLORATION EXPENDITURES

* FUEL	5700.00
* Labor Hours	
Travel -262hr	
set up & dismantle -112hr	
Trails – 86hr	
prospecting-277hr	
total hours- 737 @ \$ 50.00/hr	36850.00
Mics ( oil , grease, supplies )	300.00
Sub Total	42850.00

## PROSPECTING

* Exploration Equipment	
Sub Total	4882.14
* Exploration Expenditures	
Sub Total	42850.00
Total	47732.14
* Assaying & whole rock analysis	330.00



*Sept 21/2015*

Valmond Chiasson

September 21, 2015

“ 9 “

BREAKDOWN STATEMENT

PROSPECTING	\$ 47732.14
Assaying & Whole rock analysis	\$ 330.00
SUB Total	\$ 48062.14
<i>administration @ 10 %</i>	\$ 4806.21
Total	\$ 52868.35

in 2012 / 2013 / 2014 this work was done during May , June ,  
July , August , September , October and November

PROJECT NAME

COUGAR CREEK PROJECT NO 0939312080462







## MINERAL ASSESSMENT EXPENDITURE SUMMARY BY TYPE OF WORK

Estimated Expenditure (submitting with Statement of Intent to File)

Actual Expenditure (for Part B of Report; must match total filed in Part A)

Project Name: Cougar Creek Project No 0989312080462

TYPE OF WORK	AMOUNT
1. Prospecting	\$ <u>47732.14</u>
2. Geological Mapping & Petrography	\$ _____
3. Geophysical Surveys	\$ _____
a. Airborne	\$ _____
b. Ground	\$ _____
4. Geochemical Surveys	\$ _____
5. Trenching and Stripping	\$ _____
6. Drilling	\$ _____
7. Assaying & whole rock analysis	\$ <u>330<sup>00</sup></u>
8. Other Work: _____	\$ _____
	_____
<b>SUBTOTAL</b>	\$ <u>48062.14</u>
9. Administration (up to 10% of subtotal)	\$ <u>4806.21</u>
<b>TOTAL</b>	\$ <u>52868.35</u>



Sept 21/2015  
DATE



OCT 27 2014  
20110011

I

ASSESSMENT REPORT

PART " C "

" COUGAR CREEK PROJECT "

VALMOND CHIASSON

METALLIC INDUSTRIAL MINERALS

PERMIT NO. 0939312080462

SUBMITTED BY;

VALMOND CHIASSON

OCTOBER 24, 2014



VALMOND CHIASSON

Oct 24 / 2014  
October 24, 2014

# TABLE OF CONTENT

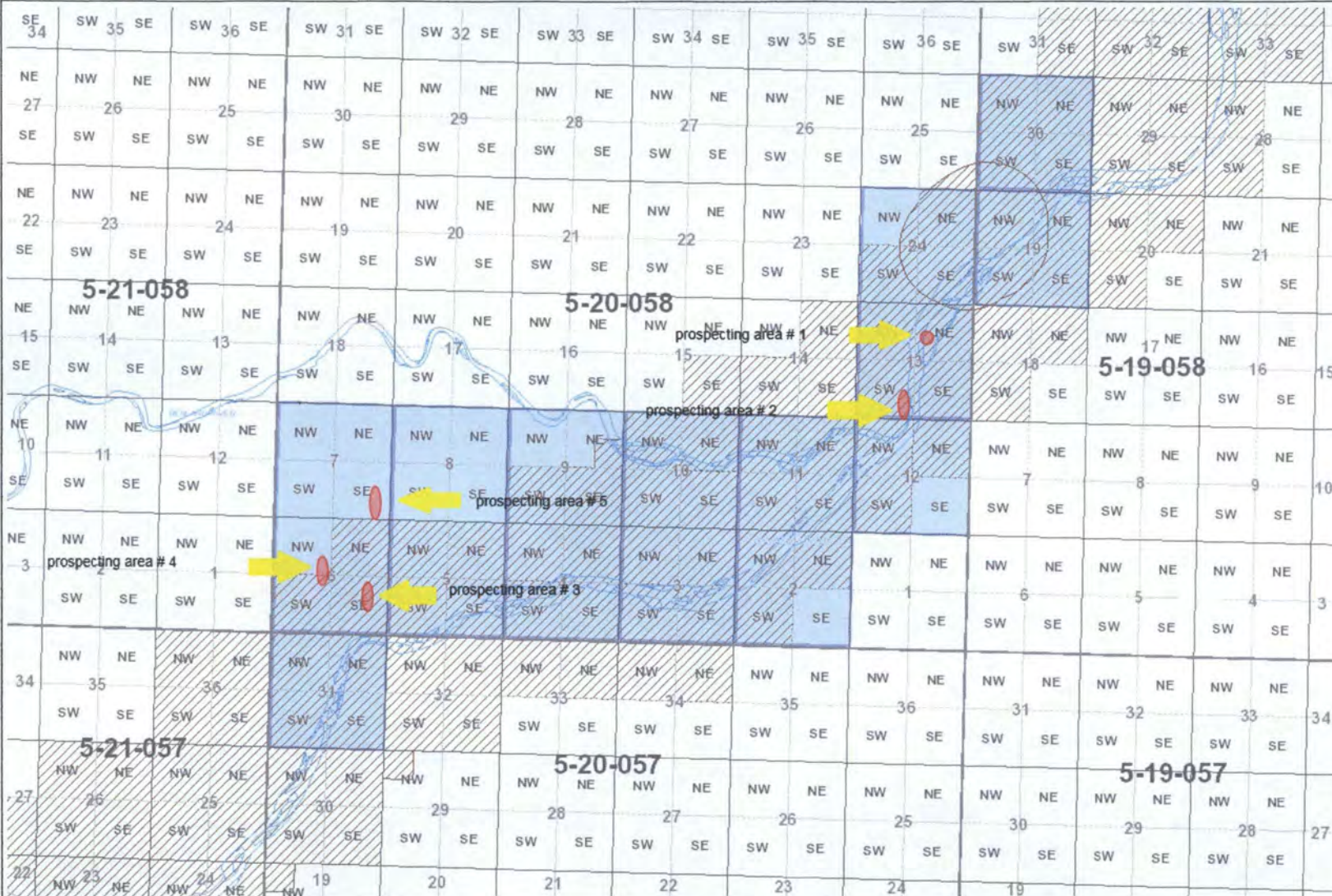
## II

### PART " C "

TITLE PAGE -----	I
TABLE OF CONTENT -----	II
PROSPECTING AREAS MAP-----	1
REVISED PROSPECTING AREAS MAP -----	2
ARGO TRAILS MAP # 1-----	3
ARGO TRAILS MAP # 1 SATELITE VIEW -----	4
ARGO TRAILS MAP # 2 -----	5
ARGO TRAILS MAP # 2 SATELITE VIEW -----	6
ARGO " ALL " TRAILS MAP -----	7
ARGO "ALL" TRAILS MAP SATELITE VIEW--	8



prospecting areas map



Legend

- Major Road
- ▭ Major Lake and River
- ▭ Municipality
- ▭ Municipality (Hamlet, Locality, Town and Township)
- ▭ Urban Service Area (Fort McMurray, Sherwood Park)
- ▭ National Park
- ▭ Parks and Protected Area
- ▭ Indian Reserve - Surface
- ▭ Mineral Ownership Under Review
- ▭ Minerals Not Owned by Alberta Crown (MaIM)
- ▭ No Surface Access (MaIM)
- ▭ Reserved/Withdrawn (MaIM)
- ▭ Subject To (MaIM)
- ▭ Other Access (MaIM)
- ★ 30 Day Reserved
- ★ 30 Day Reserved
- ★ A36 - Natural Gas Storage Agreement Application
- ★ O36 - Natural Gas Storage Agreement
- ★ A37 - Special Mineral Lease Application
- ★ O37 - Special Mineral Lease
- ★ A58 - Carbon Sequestration Evaluation Permit A
- ★ O58 - Carbon Sequestration Evaluation Permit
- ★ A59 - Carbon Sequestration Evaluation Lease
- ★ O59 - Carbon Sequestration Evaluation Lease
- ★ A93 - Metallic and Industrial Minerals Permit Application
- ★ O93 - Metallic and Industrial Minerals Permit
- ★ A94 - Metallic and Industrial Minerals Lease
- ★ O94 - Metallic and Industrial Minerals Lease
- ★ A96 - Secondary Mineral Lease Application
- ★ O96 - Secondary Mineral Lease
- ★ A42 - Other Coal Lease Application
- ★ O42 - Other Coal Lease

1: 54,671

Notes

Blue area is claim # 0939312080462 owner Valmond Chiasson

2.8 0 1.39 2.8 Kilometers

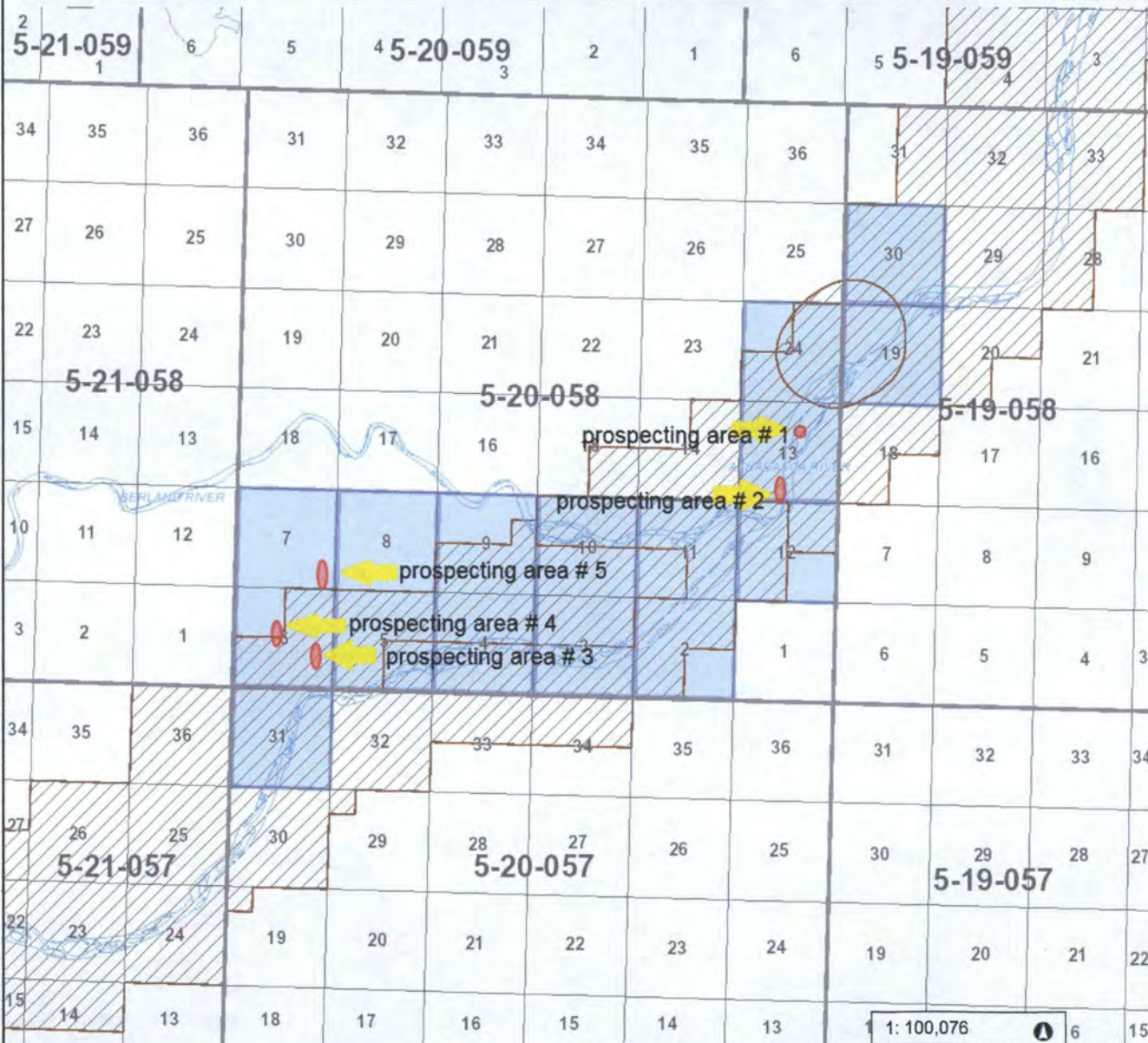
October 23, 2014

DISCLAIMER: Information presented on this map originates from various sources and is for general use only. Please be advised that some information may have been added, amended and deleted since this map was created.

Base Data Provided by SpatialData Warehouse Ltd. Copyright of Government of Alberta.



# revised prospecting areas map



## Legend

- Major Road
- Major Lake and River
- Municipality
- Municipality (Hamlet, Locality, Town and Township)
- Urban Service Area (Fort McMurray, Sherwood Park)
- National Park
- Parks and Protected Area
- Indian Reserve - Surface
- Mineral Ownership Under Review
- Minerals Not Owned by Alberta Crown (MaIM)
- No Surface Access (MaIM)
- Reserved/Withdrawn (MaIM)
- Subject To (MaIM)
- Other Access (MaIM)
- ★ 30 Day Reserv
- 30 Day Reserved
- A36 - Natural Gas Storage Agreement Application
- O36 - Natural Gas Storage Agreement
- A37 - Special Mineral Lease Application
- O37 - Special Mineral Lease
- A58-Carbon Sequestration Evaluation Permit Application
- O58 - Carbon Sequestration Evaluation Permit
- A59-Carbon Sequestration Evaluation Lease Application
- O59 - Carbon Sequestration Evaluation Lease
- A93-Metallic and Industrial Minerals Permit Application
- O93 - Metallic and Industrial Minerals Permit
- A94-Metallic and Industrial Minerals Lease Application
- O94 - Metallic and Industrial Minerals Lease
- A96 - Secondary Mineral Lease Application
- O96 - Secondary Mineral Lease
- A42 - Other Coal Lease Application
- O42 - Other Coal Lease

## Notes

blue area is permit # 0939312080462 owner Valmond Chiasson

DISCLAIMER: Information presented on this map originates from various sources and is for general use only. Please be advised that some information may have been added, amended and deleted since this map was created.

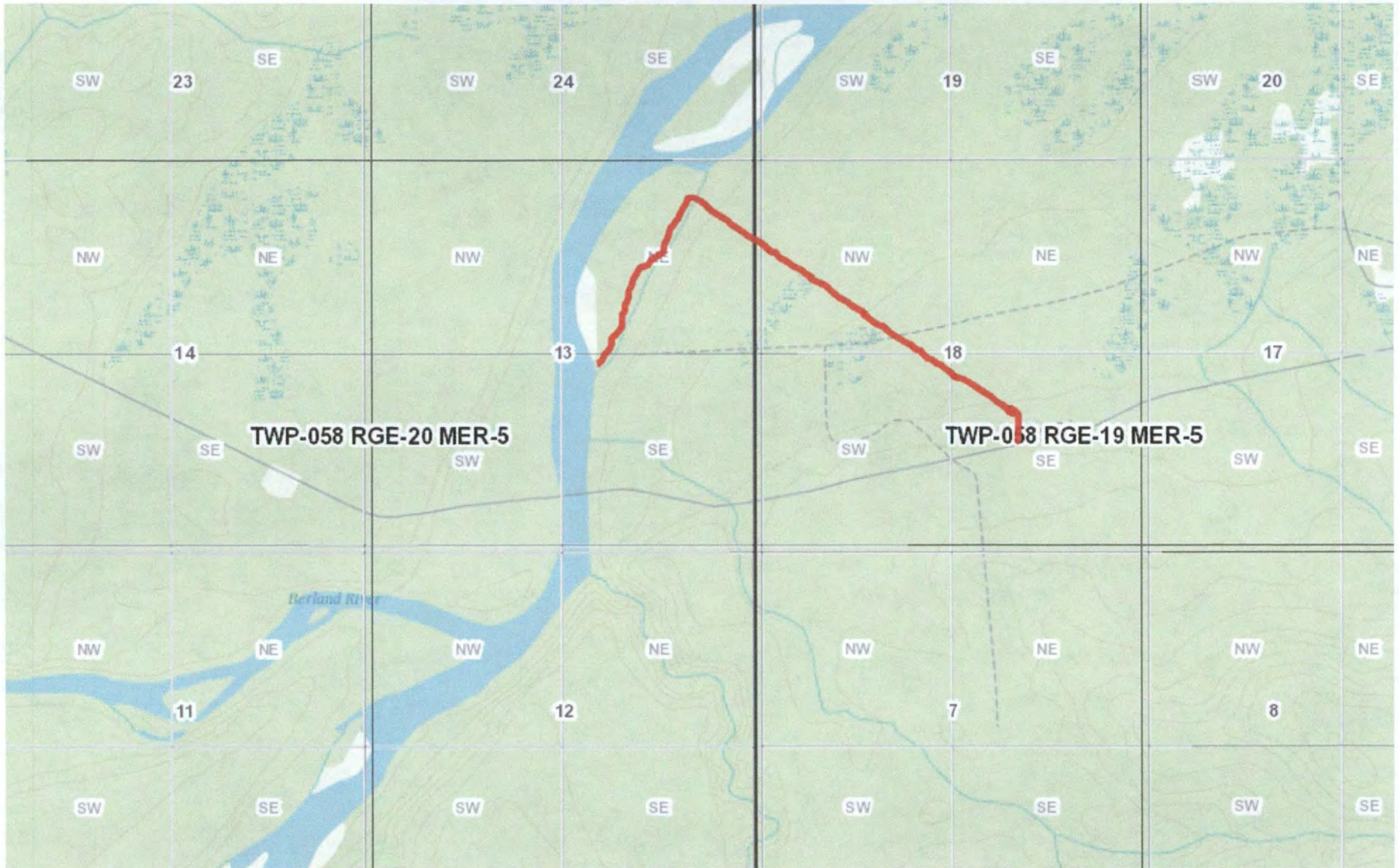
Base Data Provided by SpatialData Warehouse Ltd. Copyright of Government of Alberta.

2.5 0 1.27 2.5 Kilometers

October 23, 2014



# argo trails map # 1



Thursday, October 23, 2014 18:21:30 -06:00

Map Scale: 1: 37,764



1.9 0 0.96 1.9 Kilometers



While every effort is made to ensure data from this site is accurate and current, the Government of Alberta is not liable for any loss or damage arising from the possession, publication, or use of, that data. This information is provided "as is" without warranty.

**Alberta** Government  
GeoDiscover Alberta

Note: Any data on the map with licence jurisdiction through AltaLIS will not print.

© 2014 Government of Alberta



# argo trails map # 1 satellite view



Thursday, October 23, 2014 18:25:33 -06:00

Map Scale: 1: 37,764



1.9 0 0.96 1.9 Kilometers



While every effort is made to ensure data from this site is accurate and current, the Government of Alberta is not liable for any loss or damage arising from the possession, publication, or use of, that data. This information is provided "as is" without warranty.

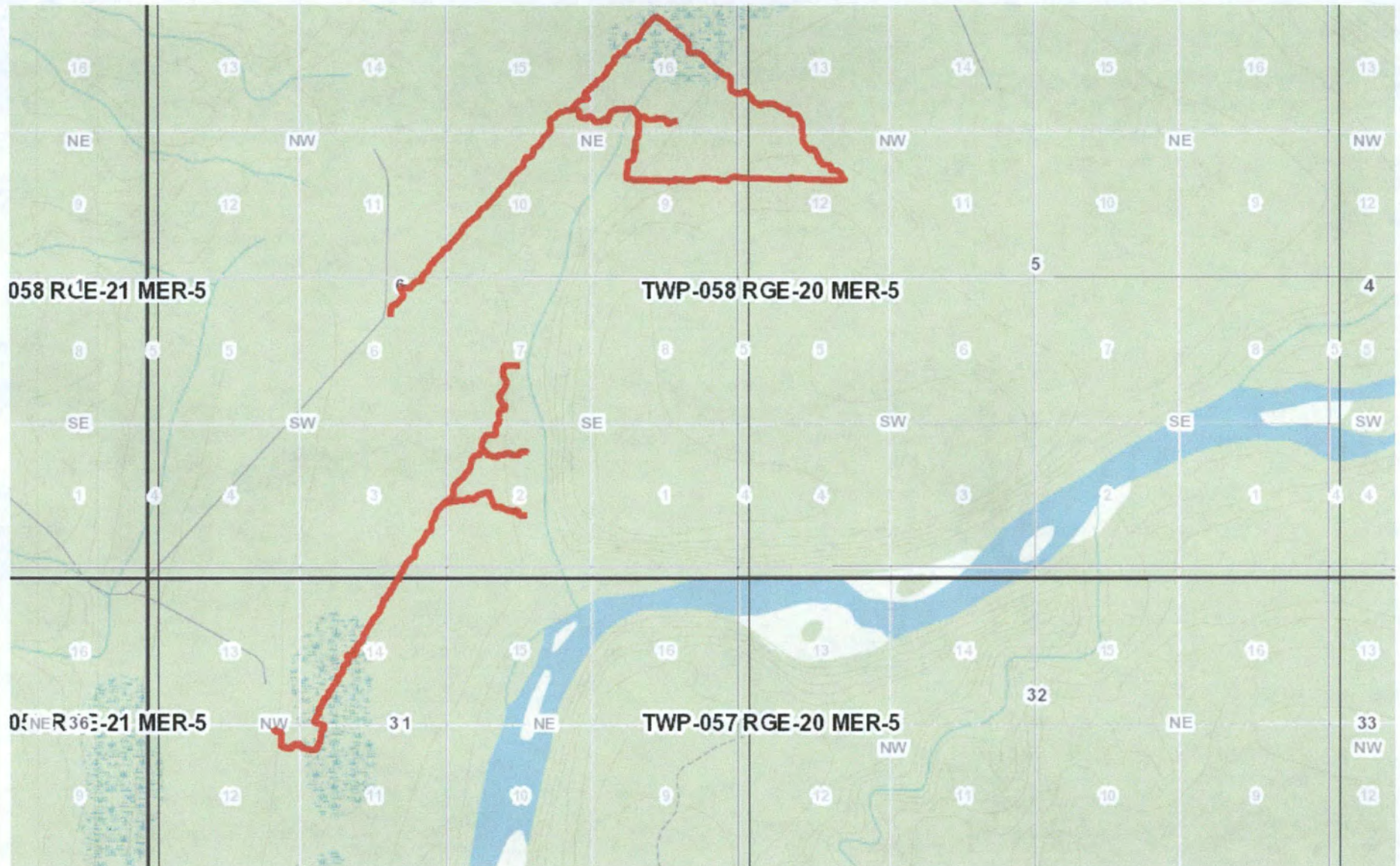
**Alberta** Government  
GeoDiscover Alberta

Note: Any data on the map with licence jurisdiction through AltaLIS will not print.

© 2014 Government of Alberta

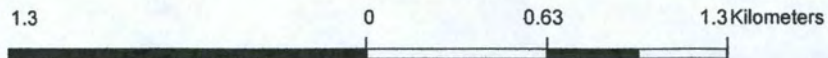


# argo trails map # 2



Thursday, October 23, 2014 18:45:46 -06:00

Map Scale: 1: 24,893



While every effort is made to ensure data from this site is accurate and current, the Government of Alberta is not liable for any loss or damage arising from the possession, publication, or use of, that data. This information is provided "as is" without warranty.

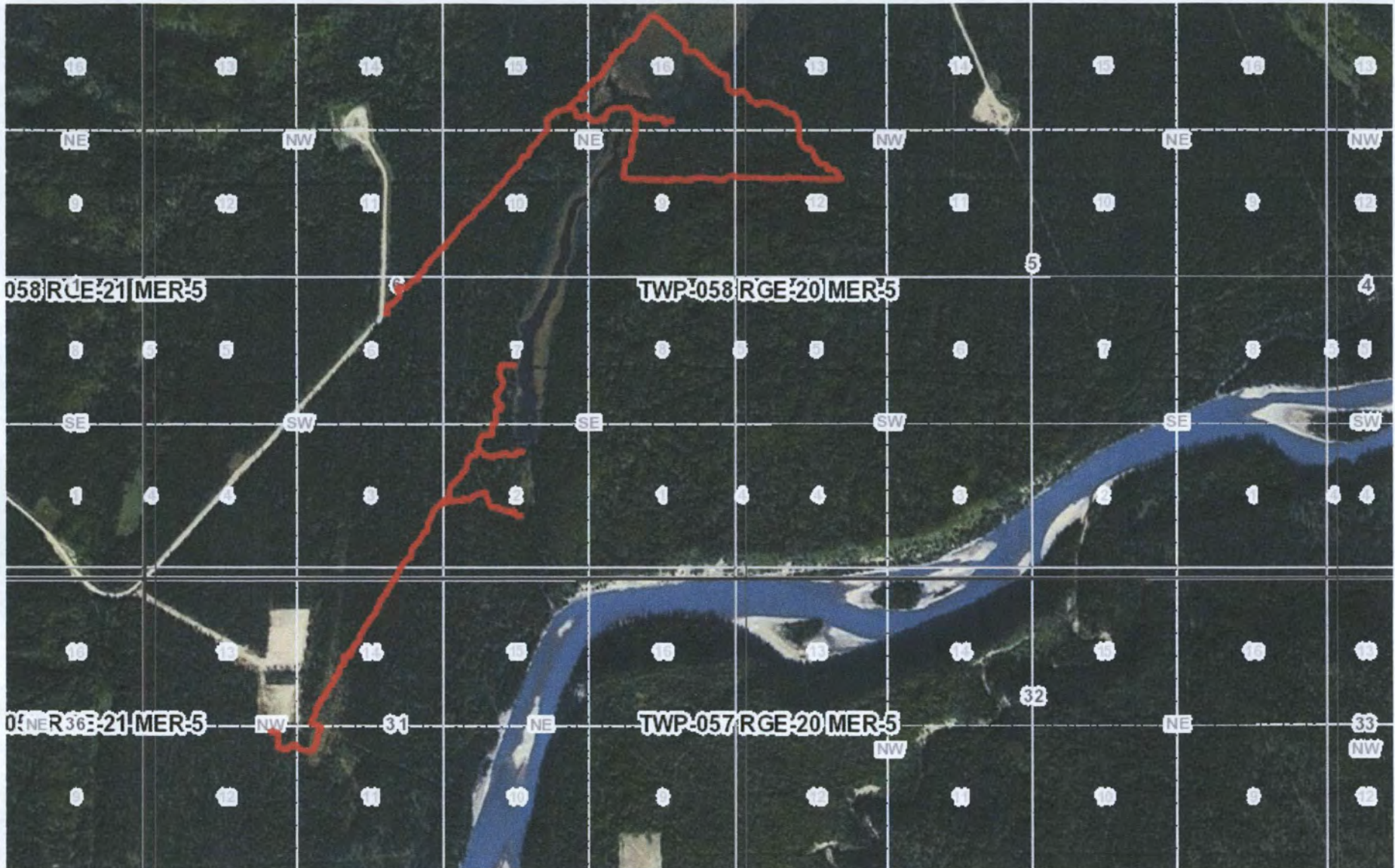


Note: Any data on the map with licence jurisdiction through AltaLIS will not print.

© 2014 Government of Alberta



# argo trails map # 2 satellite view



Thursday, October 23, 2014 18:47:43 -06:00

Map Scale: 1: 24,893

1.3 0 0.63 1.3 Kilometers

Note: Any data on the map with licence jurisdiction through AltaLIS will not print.

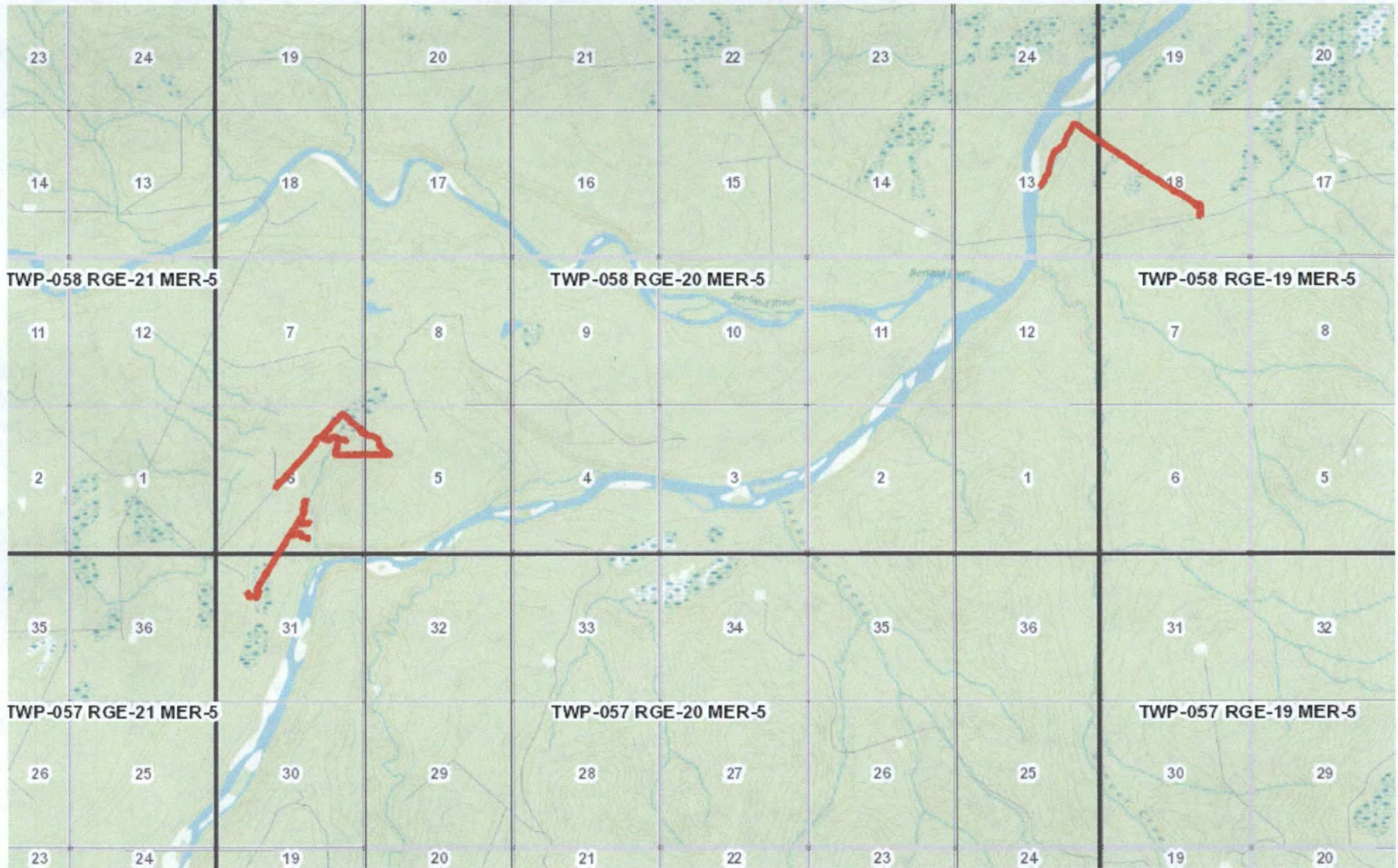
While every effort is made to ensure data from this site is accurate and current, the Government of Alberta is not liable for any loss or damage arising from the possession, publication, or use of, that data. This information is provided "as is" without warranty.

**Alberta** Government  
GeoDiscover Alberta

© 2014 Government of Alberta

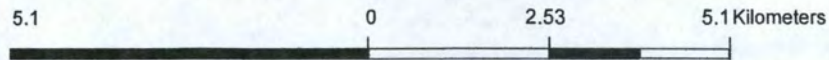


# argo " ALL " trails map



Thursday, October 23, 2014 18:36:49 -06:00

Map Scale: 1: 99,573



While every effort is made to ensure data from this site is accurate and current, the Government of Alberta is not liable for any loss or damage arising from the possession, publication, or use of, that data. This information is provided "as is" without warranty.

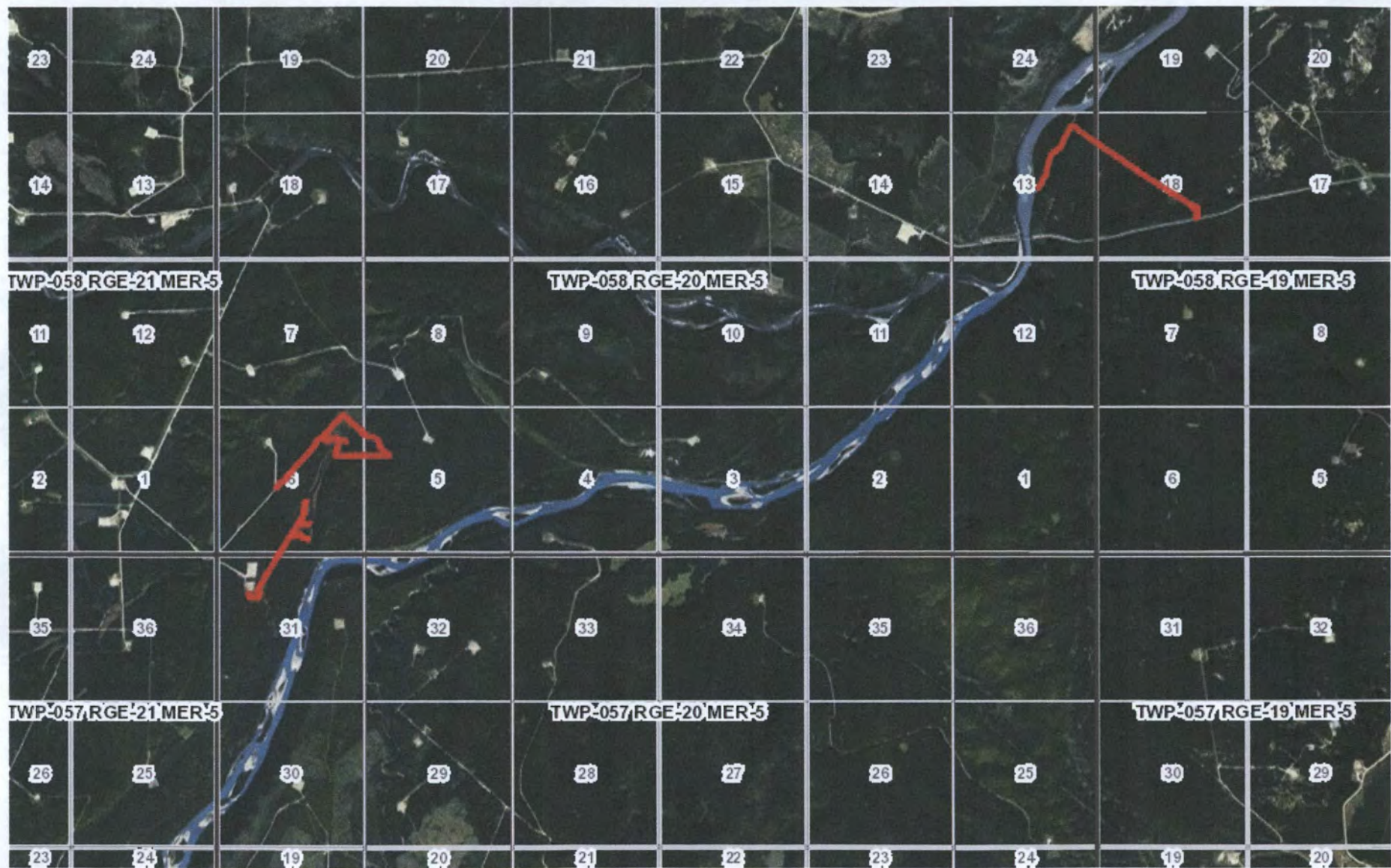


Note: Any data on the map with licence jurisdiction through AltaLIS will not print.

© 2014 Government of Alberta



# argo " ALL " trails map satellite view



Thursday, October 23, 2014 18:39:58 -06:00

Map Scale: 1: 99,573



While every effort is made to ensure data from this site is accurate and current, the Government of Alberta is not liable for any loss or damage arising from the possession, publication, or use of, that data. This information is provided "as is" without warranty.



Note: Any data on the map with licence jurisdiction through AltaLIS will not print.

© 2014 Government of Alberta