

MAR 20140001: SMOKY RIVER

SMOKY RIVER PROJECT - A report on Metallic Minerals exploration near Sturgeon Lake, east of Alberta.

Received date: Feb 10, 2014

Public release date: Feb 08, 2015

DISCLAIMER

By accessing and using the Alberta Energy website to download or otherwise obtain a scanned mineral assessment report, you ("User") agree to be bound by the following terms and conditions:

- a) Each scanned mineral assessment report that is downloaded or otherwise obtained from Alberta Energy is provided "AS IS", with no warranties or representations of any kind whatsoever from Her Majesty the Queen in Right of Alberta, as represented by the Minister of Energy ("Minister"), expressed or implied, including, but not limited to, no warranties or other representations from the Minister, regarding the content, accuracy, reliability, use or results from the use of or the integrity, completeness, quality or legibility of each such scanned mineral assessment report;
- b) To the fullest extent permitted by applicable laws, the Minister hereby expressly disclaims, and is released from, liability and responsibility for all warranties and conditions, expressed or implied, in relation to each scanned mineral assessment report shown or displayed on the Alberta Energy website including but not limited to warranties as to the satisfactory quality of or the fitness of the scanned mineral assessment report for a particular purpose and warranties as to the non-infringement or other non-violation of the proprietary rights held by any third party in respect of the scanned mineral assessment report;
- c) To the fullest extent permitted by applicable law, the Minister, and the Minister's employees and agents, exclude and disclaim liability to the User for losses and damages of whatsoever nature and howsoever arising including, without limitation, any direct, indirect, special, consequential, punitive or incidental damages, loss of use, loss of data, loss caused by a virus, loss of income or profit, claims of third parties, even if Alberta Energy have been advised of the possibility of such damages or losses, arising out of or in connection with the use of the Alberta Energy website, including the accessing or downloading of the scanned mineral assessment report and the use for any purpose of the scanned mineral assessment report so downloaded or retrieved.
- d) User agrees to indemnify and hold harmless the Minister, and the Minister's employees and agents against and from any and all third party claims, losses, liabilities, demands, actions or proceedings related to the downloading, distribution, transmissions, storage, redistribution, reproduction or exploitation of each scanned mineral assessment report obtained by the User from Alberta Energy.

2014 0001
FEB 10 2014

ASSESSMENT REPORT

PART "B"

"SMOKY RIVER PROJECT"

**ROY A. BICKELL
METALLIC INDUSTRIAL MINERALS
PERMIT NO. 9306020474**

**SUBMITTED BY:
ROY A. BICKELL
FEBRUARY 6, 2014**



.....
Roy A. Bickell

Feb 6/14
.....
February 6, 2014

**Confidentiality Report End
Date: February 06, 2015**

**General Files CSMAR-MAR20140001
Metallic & Industrial Minerals Assessment
Report – Smoky River
Submitted by: Roy A. Bickell**

TABLE OF CONTENTS

II

PART "B"

TITLE PAGE	I
TABLE OF CONTENTS	II
SUMMARY	1
INTRODUCTION	1
WORK PERFORMED	1-2
MAP	3
QUALIFICATIONS	4
RESULTS	4
CONCLUSION	4
EXPENDITURE BREAKDOWN	5

SUMMARY

"SMOKY RIVER PROJECT"

I have lived all my life (83 years) in the Debolt/Grande Prairie area. Early pioneers of the area have passed on stories of the possibilities of finding metallic minerals in the area of the permit using relatively inexpensive equipment. It should be quite easy to prove or disprove the stories. By progressively checking one area each year we should arrive at a decision.

To date, 40% of the area of the permit has been investigated with no positive results.

INTRODUCTION & WORK PERFORMED

Using a hand-held wand metal detector and by walking slowly back and forth on a predetermined grid - guided by a G.P.S. unit and supplemented by line-of-site and flagging, a portion of the permit area was covered.

In addition, I have used an electroscope to re-check the area covered by the metal detector in order to provide a "second look".

The areas covered are noted on the attached map.

The hand-held metal detector make is "Whites Electronics" "Model PRL-1" with "UCL 950 Loop".

The electroscope make is "Electroscope" Model "301" and is an "Electro Positive Frequency Induction Locator".

The metal detector sends out electronic waves (in an elliptical shape) that sense mineral concentrations (when they exist), by receiving a varied "bounce back", caused by the existence of minerals. When this occurs the unit emits a squealing sound.

The electroscope is carefully held erect at chest height by a swivel-type handle. It will swing to point to the existence of a mineral concentration.

The metal detector is slowly moved from left to right and right to left in a sweeping motion, while walking forward at about two (2) feet per second. The actual width of the sweep area is about Ten (10) feet wide.

The electroscope is carefully held as still as possible, pointing forward as one walks slowly forward in parallel lines about ten (10) feet apart.

In the use of both instruments no soil disturbance occurs.

The "Spot" instrument noted in the expenditure statement is for safety and is a satellite tracker which monitors my location, while working alone, and from which I can alert my family or call directly to 911 in case of a problem or serious injury, and in doing so, will send the coordinates of my location.

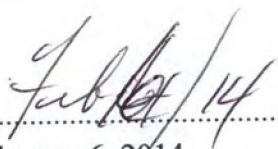
The above noted work was done by me (Roy Bickell) during a number of day trips to the site. Travel was by quad or boat on June 8th and 23rd, July 9th and 11th, August 6th, 8th, 12th & 14th, September 3rd, 8th, 11th, & 24th & October 6th, & 16th, 2012, as well as June 10th, July 9th and August 5th & 29th, 2013

During ^{2013 RA} ~~2014~~ I experienced a number of medical problems that kept me from additional work on the site.

"A summary about the regional and local geology of the area(s) prospected".

The field work that I do on this mineral claim does not involve any surface disturbance. Thus I have no detailed site-specific geological information: however, the bedrock in this area is late cretaceous. It is covered by glacial till and topped by recently-developed soils which support the growth of grass, shrubs and trees.

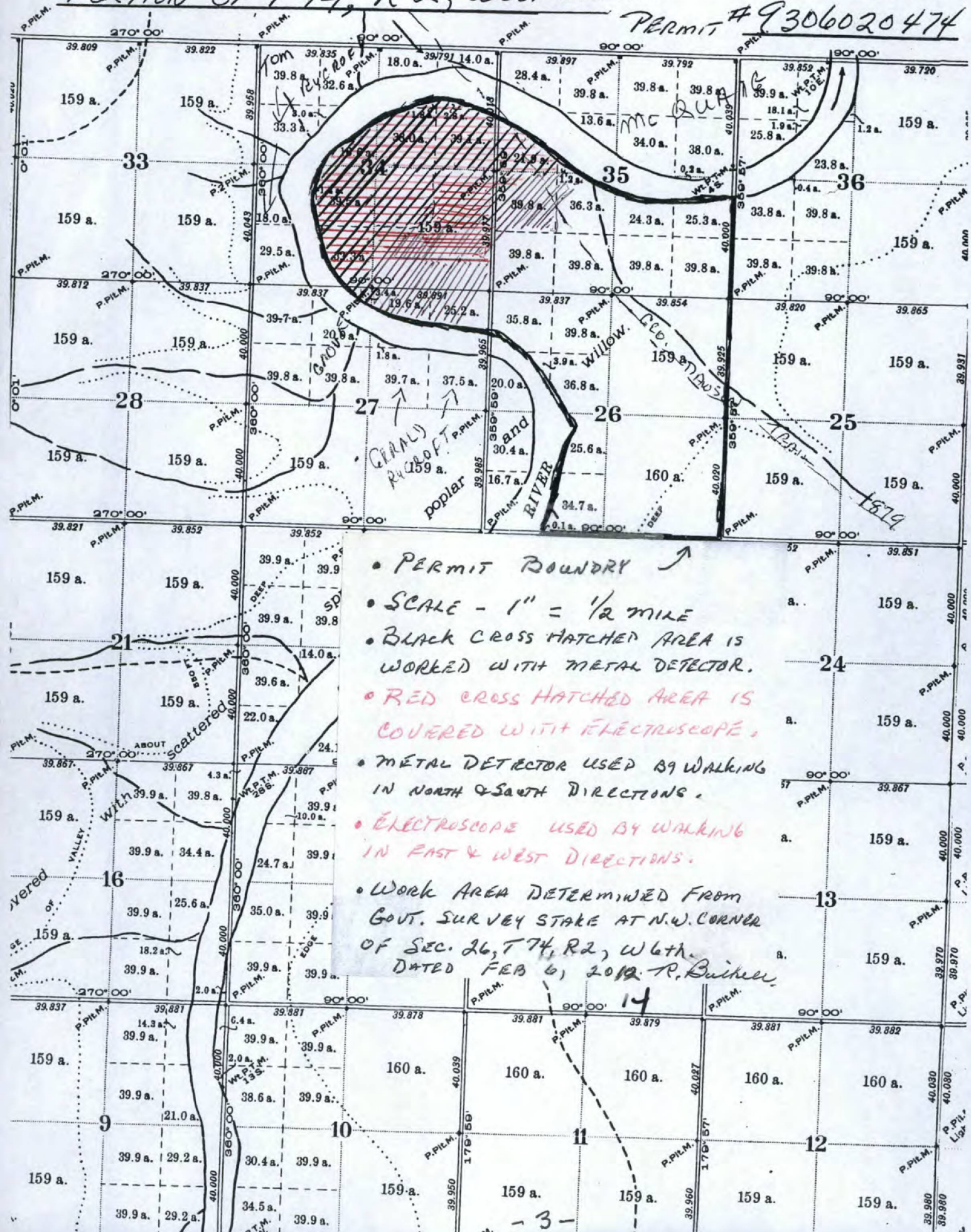

.....
Roy A. Bickell


.....
February 6, 2014

PORTION OF T74, R2, WEST 6th M.

SCALE 40 CHAINS TO AN INCH

PERMIT # 9306020474



- PERMIT BOUNDARY ↗
- SCALE - 1" = 1/2 MILE
- BLACK CROSS HATCHED AREA IS WORKED WITH METAL DETECTOR.
- RED CROSS HATCHED AREA IS COVERED WITH ELECTROSCOPE.
- METAL DETECTOR USED BY WALKING IN NORTH & SOUTH DIRECTIONS.
- ELECTROSCOPE USED BY WALKING IN EAST & WEST DIRECTIONS.
- WORK AREA DETERMINED FROM GOVT. SURVEY STAKE AT N.W. CORNER OF SEC. 26, T74, R2, W6th. DATED FEB 6, 2012. R. Buiker.

Roy A. Bickell

Phone 780-539-7049

Fax: 780-532-0074

QUALIFICATIONS

- * Amateur fossil collector for 40 years
- * Past President - Grande Prairie Museum
- * Member - Geology and Archaeology Research Council
- * Member - Paliontology Society of the Peace
- * Knowledgeable in the operation of a wand-type hand-held metal detector and G.P.S.
- * Have found lost metallic items

RESULTS

- * To date absolutely nothing has been found within the permit area.

CONCLUSION

- * Plan to continue exploring the remainder of the permit area with the metal detector and electroscope as time and weather permit, during the summer months.
- * I am not requesting any cancellation of amendments.

PART "B"

BREAKDOWN STATEMENT

PROSPECTING	\$6,318.00
<i>Administration @10%</i>	\$ 622.00
TOTAL	\$6,940.00

In 2012 this work was done during June, July, August, September and October, 2012,
and June, July & August, 2013

PROJECT NAME

SMOKY RIVER PROJECT No. 9306020474