

MAR 20130013: CHINCHAGA B

Chinchaga B- A report on Sand exploration near Rainbow Lake, North West Alberta.

Received date: Mar 18, 2013

Public release date: Jan 11, 2014

DISCLAIMER

By accessing and using the Alberta Energy website to download or otherwise obtain a scanned mineral assessment report, you ("User") agree to be bound by the following terms and conditions:

- a) Each scanned mineral assessment report that is downloaded or otherwise obtained from Alberta Energy is provided "AS IS", with no warranties or representations of any kind whatsoever from Her Majesty the Queen in Right of Alberta, as represented by the Minister of Energy ("Minister"), expressed or implied, including, but not limited to, no warranties or other representations from the Minister, regarding the content, accuracy, reliability, use or results from the use of or the integrity, completeness, quality or legibility of each such scanned mineral assessment report;
- b) To the fullest extent permitted by applicable laws, the Minister hereby expressly disclaims, and is released from, liability and responsibility for all warranties and conditions, expressed or implied, in relation to each scanned mineral assessment report shown or displayed on the Alberta Energy website including but not limited to warranties as to the satisfactory quality of or the fitness of the scanned mineral assessment report for a particular purpose and warranties as to the non-infringement or other non-violation of the proprietary rights held by any third party in respect of the scanned mineral assessment report;
- c) To the fullest extent permitted by applicable law, the Minister, and the Minister's employees and agents, exclude and disclaim liability to the User for losses and damages of whatsoever nature and howsoever arising including, without limitation, any direct, indirect, special, consequential, punitive or incidental damages, loss of use, loss of data, loss caused by a virus, loss of income or profit, claims of third parties, even if Alberta Energy have been advised of the possibility of such damages or losses, arising out of or in connection with the use of the Alberta Energy website, including the accessing or downloading of the scanned mineral assessment report and the use for any purpose of the scanned mineral assessment report so downloaded or retrieved.
- d) User agrees to indemnify and hold harmless the Minister, and the Minister's employees and agents against and from any and all third party claims, losses, liabilities, demands, actions or proceedings related to the downloading, distribution, transmissions, storage, redistribution, reproduction or exploitation of each scanned mineral assessment report obtained by the User from Alberta Energy.

20130013

**Metallic and Industrial Mineral Permit
Number 9311010580**

Chinchaga Project

Part B
Administrative Documents

Submitted By:
Matthew B. Bendernagel
Manager of Geology
Preferred Sands of Canada, ULC

March 10, 2013





Table of Contents

Expenditure Statement by Activity.....	11
1.0 Introduction.....	12
2.0 Summary.....	13
3.0 Geology.....	14
3.1 Regional Geographic Setting.....	14
3.2 Regional Tectonic Setting and Bedrock Geology.....	14
3.3 Regional Surficial Geology and Associated Glacial Deposits.....	15
4.0 Hydrology.....	16
5.0 Climate.....	17
6.0 Quality and Evaluation of Testing Results.....	18
7.0 Conclusions.....	20
8.0 Future Work.....	21
Authors Qualifications.....	22
References.....	24
 Appendix A – Site Pictures.....	 26
Appendix B – Microscope Pictures.....	31
Appendix C – Tables.....	37
Appendix D – Figures.....	40



Expenditure Statement by Activity

Required Expenditure	Hectares	Rate	Cost
Permit No. 9311010580	4,096	\$5	\$20,480
Total			\$20,480
Actual Expenditure			
Prospecting	Units	Rate	Cost
Air	1	\$772.20	\$772.20
Rental Car			\$1,141.57
Fuel			\$135.18
Hotel			\$360.68
Food			\$225.95
Intern Hours (2)	115	\$32.00	\$3,680.00
Geologist Hours	40	\$150.00	\$6,000.00
Misc. Supplies			\$366.94
Assaying & Whole Rock Analysis			
Gradation Testing	10	\$75.00	\$750.00
Crush testing	2	\$550.00	\$1,100.00
simulated attrition wash	5	\$50.00	\$250.00
Microscopic pictures/visual analysis	54	\$100.00	\$5,400.00
Administration (up to 10%)			\$2,018.25
Total			\$22,200.77



1.0 Introduction

In 2012, a visit was conducted by Preferred Sands of Canada, ULC (Preferred) to the property subject to the terms and conditions of the Metallic and Industrial Mineral Permit, No. 93110110580 (Permit) which was issued on January 10th, 2011. The mineral reserves of this parcel were explored by finding exposed mineral sample points and obtaining representative samples. Observations pertaining to sampling and sample sites were recorded. All samples and notes were forwarded to the corporate office where samples were assessed and select samples were chosen for evaluation.

The Preferred Geology Department conducted American Petroleum Institute (API) material assessments to determine the properties of the sand as they relate to a proppant. These observations will be used to evaluate reserve quality and assess product potential.



2.0 Summary

In late August 2012 representatives of Preferred commenced a five day investigation of the Permit property. The purposes of the investigation were to determine the following: 1) review literature on the Chinchaga deposit, 2) compile a brief assessment of the potential proppant reserve quality based on surface sampling and observations.

A total of 17 samples were collected from 10 locations. GPS locations and pictures were taken to properly record sample locations and conditions. Approximately 2 – 4 lbs. of sand were collected for each sample. Upon completion of sample gathering, each sample was shipped to the Preferred Corporate office for analysis.

Representative samples were selected on the basis of accessibility, existing outcrops, and safety. All samples were washed, half were attrition scrubbed. The clean samples were then evaluated for crush strength and sieve size distribution. Potential product samples were separated out and examined under a microscope to observe roundness, and sphericity. Further evaluation and study will be required to determine exact product chemistry and overall deposit quality.

Over the course of this investigation expenditures totaling \$22,200.77 were incurred (\$20,182.52 on exploration, \$2,018.25 on administration). The current assessment period (Period 1) requires expenses totaling \$5 per hectare for 4,096 hectares; a total cost of \$20,480 on exploration will keep the Permit in good standing. For this assessment period a balance of \$1,720.77 will be carried forward into Assessment Period 2 and be credited towards the \$40,960 in expenses required for that assessment period.

3.0 Geology

3.1 Regional Geographic Setting

The region can be described as within the Mackenzie River drainage basin, which empties into the Beaufort Sea (Plouffe, Paulen, and Smith, 2006, p.7). The Permit is located in northwest Alberta, adjacent to the Northwest Territories and British Columbia. The Permit is situated in the Rainbow Lake Plain within the Clear Hills Uplands and just south of the Fort Nelson Lowlands (Pawlowicz et al., 2005a).

The elevation typically ranges between 335 meters to 450 meters above sea level (ASL) but can reach elevations greater than 700 meters ASL in the highest areas of the Clear Hills Uplands (Pawlowicz et al., 2005b). The Permit region is found to be poorly drained due to deep incision of secondary streams which is a main contributing factor to the formation of organic deposits in the forms of fens and bogs (Plouffe, Paulen, and Smith, 2006, p.7).

3.2 Regional Tectonic Setting and Bedrock Geology

The Chinchaga region has a complex tectonic setting. The area covering the Permit lies directly south and east of the Great Slave Lake Shear Zone and directly west of the Allan Shear Zone (Pană, 2003, p.2-3). Pană has shown that Precambrian basement rocks include both plutonic and metamorphic domains as well as granitic belts (2003, p.3).

The bedrock geology consists of the Cretaceous Shaftesbury shale formation overlain by the Cretaceous Dunvegan formation which is a sandstone (Plouffe, Paulen, and Smith, 2006, p.8-9). The Shaftesbury is defined as a dark gray, marine shale which is interbedded with silty and sandy intervals 250 to 450 meters thick; and the Dunvegan formation is noted to be a deltaic to marine, gray, fine-grained feldspathic sandstone with laminated siltstone and gray, silty shale 140 to 180 meters thick (Ozora, 1982, p.4). It is noted by Plouffe, Paulen, and Smith (2006) that bedrock is exposed in meltwater channels, along stream valleys, and hilltops (p.8).



3.3 Regional Surficial Geology and Associated Glacial Deposits

The region is covered by an extensive till blanket comprised of glacial sand and gravel. The depositional material originated within the Laurentide Ice Sheet which flowed west and southwest across the area during the Late Wisconsinian glaciation (Plouffe, Paulen, and Smith, 2006, p.8). Glaciofluvial sand and gravel was deposited along the outlets of proglacial lakes and meltwater channels in the area.

The surficial geology of the region is mostly material deposited during the Late Wisconsinian Glaciation. The ice sheet dictated the deposition of current features and surficial materials and molded the topography of the region. The region is covered by diamicton till, glaciolacustrine layers, outwash deposits, organic soils, and bog peats (Ozoray, 1982, p.5). In general, glaciolacustrine materials are found in undulating, lower-lying land; and tills are found in areas of relatively higher elevations.

The till in this region is nearly continuous consisting of diamicton with a fine grained matrix and low clast content (< 5%). On average the matrix is about 60% silt, 27% sand, and 12% clay (Plouffe, Paulen, and Smith, 2006, p.8). Tills are exposed at some surfaces in raised areas but generally underlie organic materials. Outwash deposits are defined as well sorted sands with pebble lenses (Ozoray, 1982, p.5)

4.0 Hydrogeology

Data provided by Borneuf and Pretula in the publication "Hydrogeology of the Zama - Bistcho Lakes Area, Alberta" (1980) provides an assessment of the hydrogeology of the Hay River-Chinchaga River Drainage Basin. In this region, the water table is close to, or at, the surface due to thin surficial sediments which contributes to the low permeability of the area and subsequently lower groundwater recharge (p.3-4).

Surficial sediments are the main aquifer; they range between 15 m and 100 m in thickness. Their yield range is between 0.1 and 2 L/s (Borneuf and Pretula, 1980, p.4). The Dunvegan Sandstone comparatively has a yield range between 0.2 and 0.4 L/s (Borneuf and Pretula, 1980, p.4). The Dunvegan Sandstone is not very thick and is located at higher elevations. Commonly, they are completely unsaturated.

The Hay River-Chinchaga River drainage system flows north through British Columbia, Alberta, and Northwest Territories. It ultimately drains into Great Slave Lake and from there will discharge into the Arctic Ocean. The basin is characterized with poor drainage which explains the tendency of the lowlands to flood. Basin tributary rivers and streams meander sluggishly (Borneuf and Pretula, 1980, p.2).



5.0 Climate

The climate in the region is characterized as microthermal (Borneuf and Pretula, 1980, p.2). Records show that the four warmest months (May, June, July, and August) of the year have average temperatures of 8 degrees Celsius or higher and the average annual temperature is 3 degrees Celsius (O'Leary, Saxena, and Decoursey, 2002, p.6). The mean annual snowfall for the region is 1.5 m (Borneuf and Pretula, 1980, p.2) while, the snowpack on average lasts from October to May (Ozoray, 1982, p.2). Mean annual precipitation varies from 394 mm to 457 mm, depending on the elevation (Borneuf and Pretula, 1980, p.2).



6.0 Quality and Evaluation of Testing Results

Prior to visiting the Permit site (Figure 6.1, Appendix D), strategic areas were targeted and identified as areas of focus for this initial investigation. Representative samples were collected over a five day period from August 19th to August 23rd, 2012 by Lauren Punt and Jordan Booth, Preferred Geology Department interns. To see a map of sample locations, please reference Figure 6.2 in Appendix D.

Sixteen representative samples were collected for evaluation and study. Sample elevations ranged from 352 meters to 554 meters with the average sample elevation being 395 meters (see sample notes, Table 6.4). To thoroughly document the Permit, pictures were taken at each individual sample location (Appendix A).

The samples were split, washed and sorted through a stack of US Standard sieves that were shaken in a Ro-Tap™ for 10 minutes. The sieves used were the #12, #16, #20, #25, #30, #35, #40, #45, #50, #60, #70, #100, and #140 mesh sizes. Any material that passed the #140 mesh size sieve was collected in the pan. Each sieve and the pan's contents were weighed in grams and documented (Table 6.3). Using that information, the individual percent retained on each sieve was calculated. The accumulation of a certain set of sieves can give one an idea of the expected yield of a certain product. For example, by adding together the individual percent retained of the #25, #30, #35, and the #40 sieve, the potential yield of a 20/40 proppant is determined. The Permit sands show, on average, a 20/40 content of 29.6%, 40/70 content of 25.4%, and 70/140 content of 11.6%.

Crush strength was evaluated for 5 samples of 40/70 at 5000 PSI following the equipment and testing guidelines set forth in "Measurement of Properties of Proppants" (2008, p. 23-28). The recommended suggested fines percentage for 40/70 is 8% ("Recommended Practices for Testing Sand", 1995, p. 11). The evaluation of the samples conducted by Preferred show values ranging between 25.1 and 26.7%, the average crush value for these samples is 25.9% (Table 6.1). This value is almost 300% higher than the



recommended value. A larger data set is required for further evaluation so that a better understanding of product potential can be established, as this study only evaluated 2 samples from 1 sample location. These tests were conducted to get an initial crush evaluation and determine if the samples show potential.

Microscope pictures (Appendix B) were used to do a cursory evaluation of grain roundness and sphericity. A visual observation of the grains was completed and approximate values were assigned to individual grains by using Figure 5 "Chart for Visual Estimation of Sphericity and Roundness," cited on page 7 of "Recommended Practices for Testing Sand" (1995). According to "Recommended Practices for Testing Sand" proppant sand should have a sphericity of 0.6 or greater, and a roundness of 0.6 or greater (1995, p.5). More specifically, McLaws asserts that proppant sand should have a roundness factor of 0.6 or more to be useable, be a roundness factor of 0.7 is preferable (1971, p. 17-18).

After evaluating the three sample sets (20/40, 40/70, and 70/140) for roundness and sphericity at each sample location (waypoints 13, 14, and 20), the samples are found to be within the acceptable range necessary for use as a proppant sand (Table 6.2). The average roundness and sphericity values are as follows for products 20/40, 40/70, 70/140 respectively: 0.58 and 0.71, 0.60 and 0.73, and 0.58 and 0.68. More in depth evaluation will be necessary prior to marketing this sand for use as a proppant.



7.0 Conclusions

Overall site investigation and evaluation has presented positive findings and a need for more in-depth study of reserve potential. Sieve analyses prove to be within an acceptable range and illustrate a high product yield potential for the Permit. Initial roundness and sphericity values are found to be within an acceptable range for proppant sand use. Crush resistance testing has not shown values within the acceptable range, although more tests are needed before reserve quality can be properly assessed.



8.o Future Work

More in depth research will be scheduled for the next work period as we continue to understand the potential product yields. Preferred will need to conduct a drilling program to determine the exact quality and quantity of proppant materials available at the Permit site. Samples will need to be evaluated for chemistry, gradation, sphericity, roundness, and crush strength to understand its use as a proppant as well as other potential market applications.

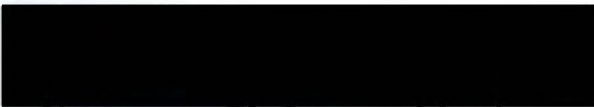


Authors Qualifications

March 10, 2013

I, Matthew Bendernagel, reside in Paoli, Pennsylvania, United States of America and hereby certify that:

1. I am the Manager of Geology for Preferred Sands of Canada, ULC (Preferred), One Radnor Corporate Center, 100 Matsonford Road, Suite 101, Radnor, PA 19087. Preferred has been supplying sand proppant to the oil and gas industry since 2008.
2. I am a graduate of Purdue University, West Lafayette, IN with a B.S. in Earth Science.
3. I have been a geologist in the mining industry since 1999.
4. I have my Masters in Business Administration for the University of Detroit Mercy.
5. I am responsible for the exploration of minerals due diligence for all prospective sites that Preferred explores.
6. I am responsible for all mining planning activities for existing Preferred operations.
7. I have been studying and investigating sandstones suitable for hydraulic fracturing of oil and gas wells since 2010.
8. I co-authored this report with Amanda Lierman, Geologist, Preferred.
9. I am not aware of any material fact or material change with respect to the subject matter of this report that is not reflected in this report, or the omission to disclose which makes this report misleading.



MATTHEW B. BENDERNAGEL

Manager of Geology
Preferred Sands of Canada, ULC

March 10, 2013

I, Amanda Lierman, reside in Bloomer, Wisconsin, United States of America and hereby certify that:

1. I am a Geologist for Preferred Sands of Canada, ULC (Preferred), One Radnor Corporate Center, 100 Matsonford Road, Suite 101, Radnor, PA 19087. Preferred has been supplying sand proppant to the oil and gas industry since 2008.
2. I am a graduate of University Wisconsin Eau Claire, Eau Claire, WI with a B.S. in Geology.
3. I have been working in the mining industry since 2009.
4. I am responsible for field work in association with the exploration of minerals and due diligence necessary for all prospective sites that Preferred explores.
5. I have been studying and investigating sandstones suitable for hydraulic fracturing of oil and gas wells since 2007.
6. I co-authored this report with Matthew Bendernagel, Manager of Geology, Preferred.
7. I am not aware of any material fact or material change with respect to the subject matter of this report that is not reflected in this report, or the omission to disclose which makes this report misleading.



AMANDA LIERMAN
Geologist
Preferred Sands of Canada, ULC

References

- Armstrong, D. E., & McClary, R. E. (1949). *Analysis of Power Costs in the Province of Alberta 1949*.
Edmonton, AB: University of Alberta
- Borneuf, D. & Pretula, B. (1980). *Hydrogeology of the Zama - Bistcho Lakes Area, Alberta*. (Earth
Sciences Report 80-3). Alberta Research Council.
- McLaws, I. J. (1971). *Uses and Specifications of Silica Sand*. (Report 71-4). Edmonton, AB:
Research Council of Alberta
- Measurement of Properties of Proppants Used in Hydraulic Fracturing and Gravel-packing
Operations*. (2008). Washington DC: American Petroleum Institute.
- O'Leary, D., Saxena, A., & Decoursey, C. (2002). *Biophysical Inventory of Chinchaga Wildland
Park*. Edmonton, AB: Geowest Environmental Consultants
- Ozoray, G. (1982). *Hydrogeology of the Clear Hills - Chinchaga River Area, Alberta*. (Earth
Sciences Report 82-4). Alberta Research Council.
- Pană, D.I. (2003). *Precambrian Basement of the Western Canada Sedimentary Basin in Northern
Alberta*. (EUB/AGS Earth Sciences Report 2002-02). Edmonton, AB: Alberta Geological
Survey
- Pawlowicz, J.G., Hickin, A. S., Nicoll, T.J., Fenton, M. M., Paulen, R.C., Plouffe, A., & Smith, I. R.
(2005). *Bedrock Topography of Zama Lake Area, Alberta (NTS 84L)*. Alberta Energy and
Utilities Board, EUB/AGS Map 328, Scale 1:250 000.



Pawlowicz, J.G., Hickin, A. S., Nicoll, T.J., Fenton, M. M., Paulen, R.C., Plouffe, A., & Smith, I. R.

(2005). *Drift Thickness of Zama Lake Area, Alberta (NTS 84L)*. Alberta Energy and
Utilities Board, EUB/AGS Map 329, Scale 1:250 000.

Plouffe, A., Paulen, R.C., & Smith, I.R. (2006) *Indicator Mineral Content and Geochemistry of Glacial
Sediments from Northwest Alberta (NTS 84L, M): New Opportunities for Mineral Exploration*.
(EUB/AGS Special Report 77). Calgary, AB: Geological Survey of Canada Open File 5121.

Recommended Practices for Testing Sand Used in Hydraulic Fracturing Operations. (1995).

Washington DC: American Petroleum Institute.

Appendix A – Site Pictures



(Picture 454)

Chinchaga B, Site 1, Waypoint 12, Swamp/Pond, Old Reclaimed Mine Site



(Picture 459)

Chinchaga B, Site 1.2, Waypoint 13, Embankment Sample



(Picture 463)

Chinchaga B, Site 2, Waypoint 14, Old Mine Site, 20 Foot Face, Sampled ~8 feet up



(Picture 466)

Chinchaga B, Site 2.2, Waypoint 15, River Bank



(Picture 474)

Chinchaga B, Site 3, Waypoint 16, Small Excavation Site sampled 8 feet up on 10 foot Stockpile



(Picture 477)

Chinchaga B, Site 4, Waypoint 17, River Bank Sample



(Picture 486)

Chinchaga B, Site 5, Waypoint 19, Site Currently Under Reclamation, 9 foot Embankment
Sampled 3 feet Up



(Picture 493)

Chinchaga B, Site 7, Waypoint 20, Rainbow Sand and Gravel, 20 foot Face Sampled at 10 feet
and 14 feet

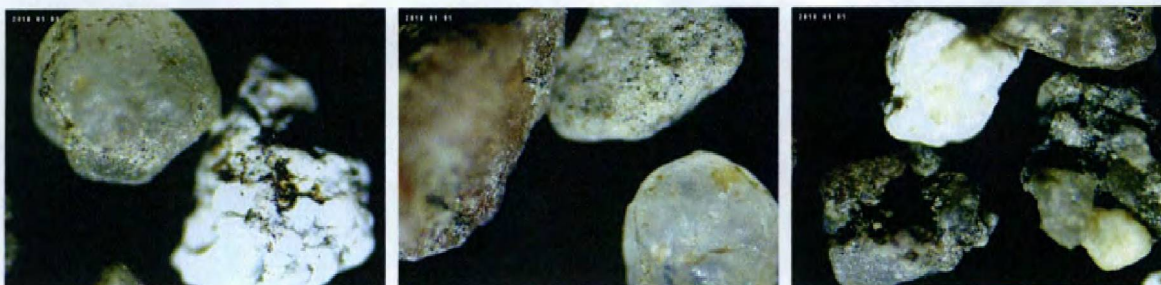


(Picture 495)

Chinchaga B, Site 8, Waypoint 21, Open Excavation, ~ 20 foot face

Appendix B – Microscope Pictures

20/40



40/70



70/140

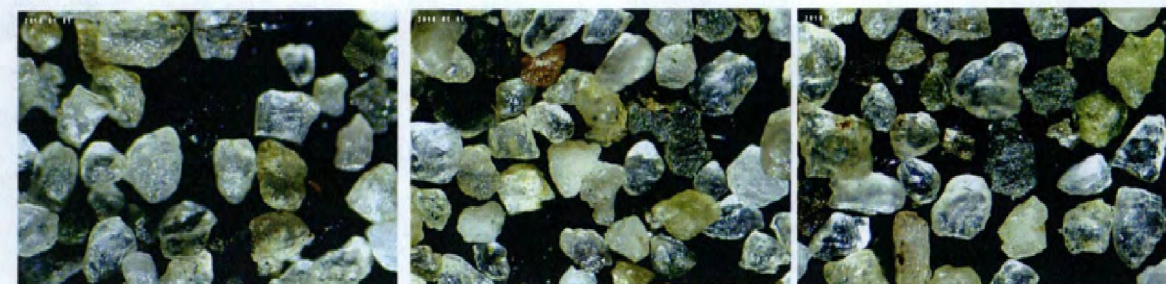
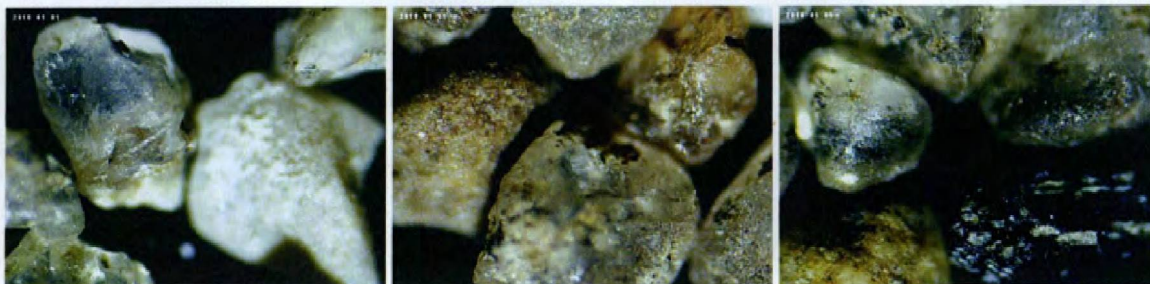
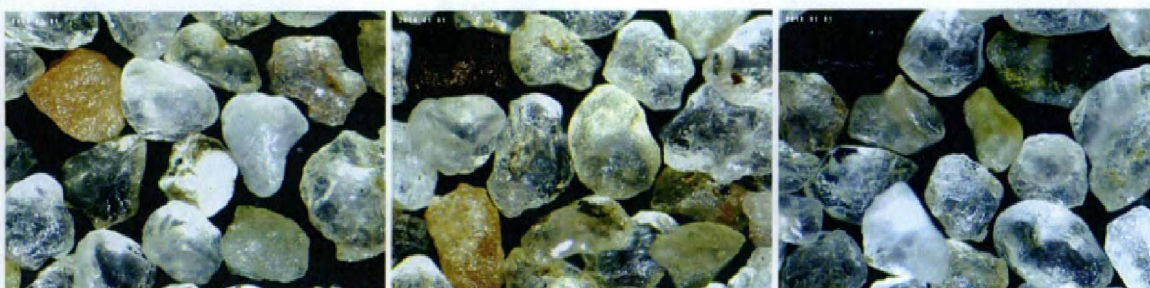


Figure 1: Waypoint 13, Potential Product Pictures – manually washed samples

20/40



40/70



70/140

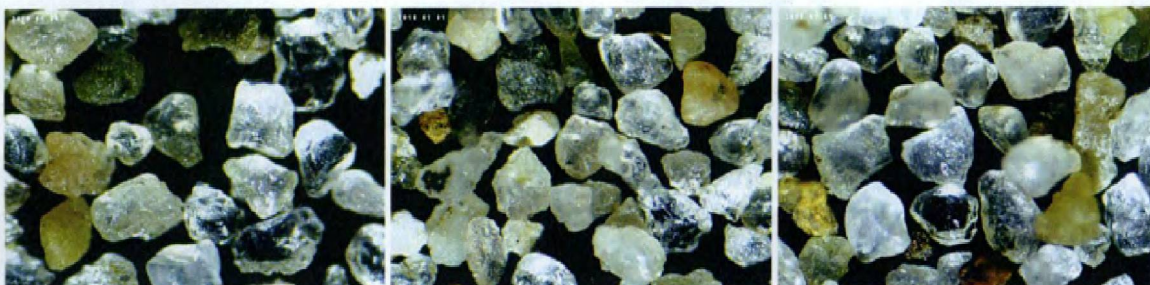
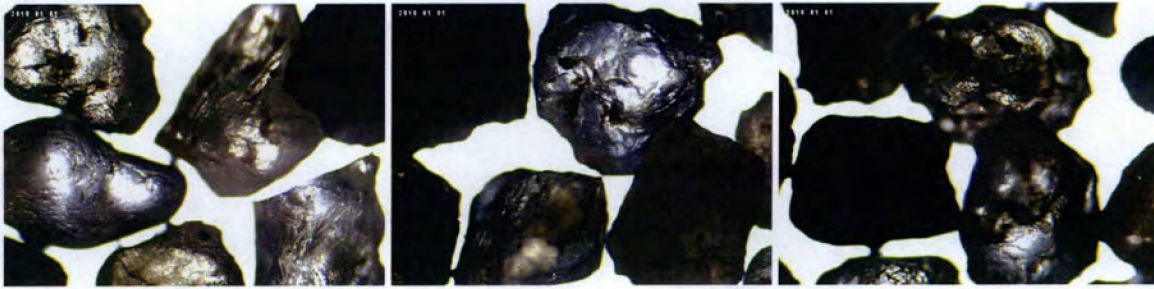
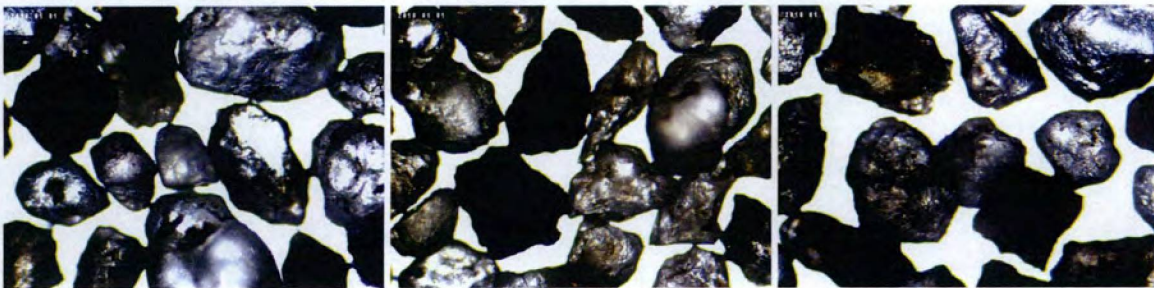


Figure 2: Waypoint 13, Potential Product Pictures – Samples washed using simulated attrition method (70% solids by weight, 2 minutes, x4 magnification)

20/40



40/70



70/140

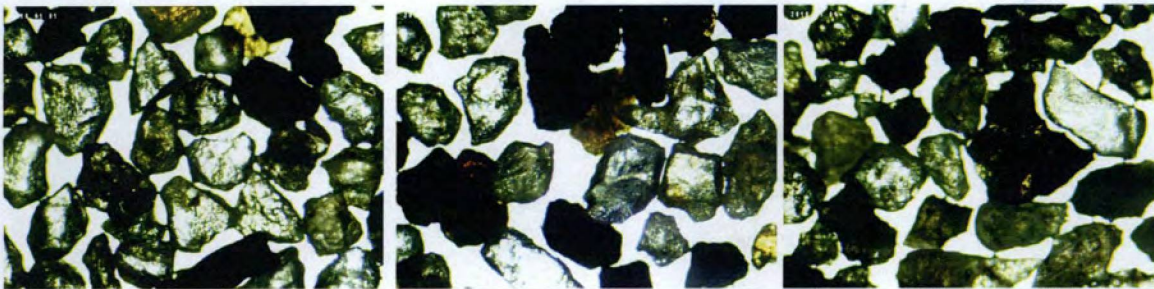
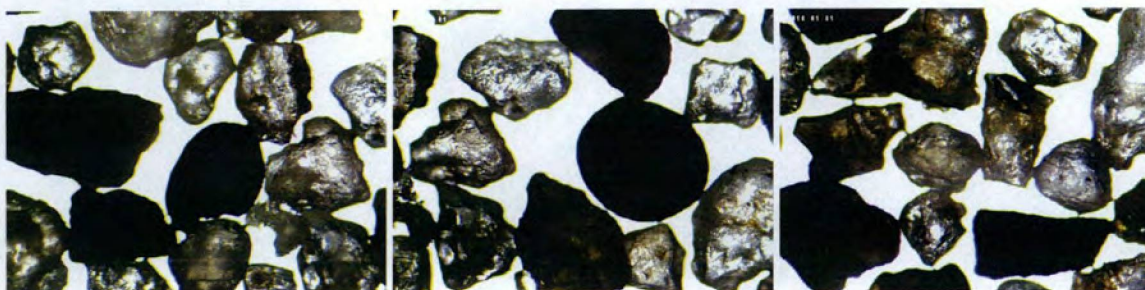


Figure 3: Waypoint 14, Potential Product Pictures – manually washed samples

20/40



40/70

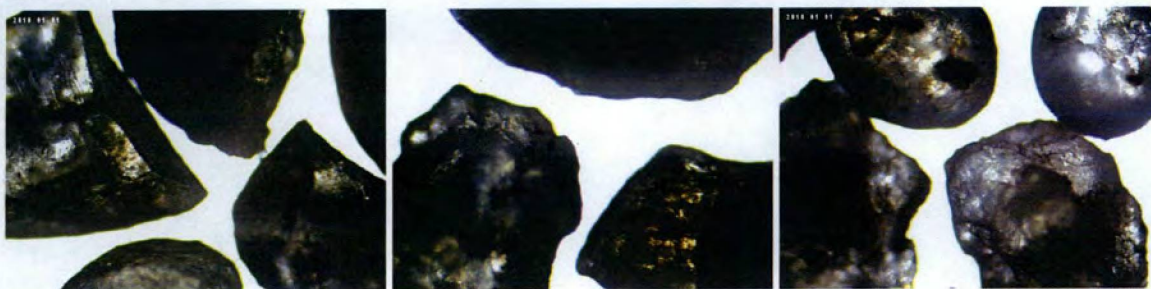


70/140



Figure 4: Waypoint 14, Potential Product Pictures – Samples washed using simulated attrition method (70% solids by weight, 2 minutes, x4 magnification)

20/40



40/70



70/140

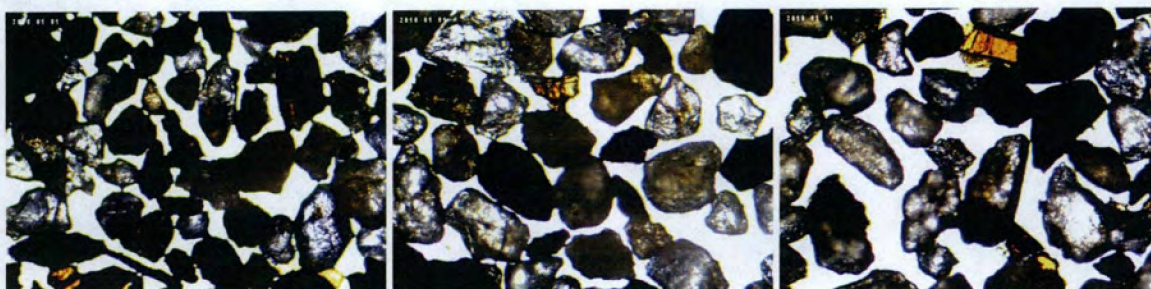
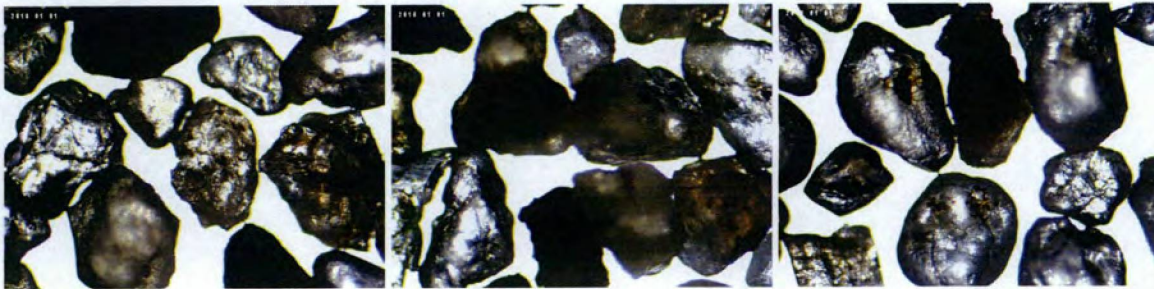


Figure 5: Waypoint 20, Potential Product Pictures – manually washed samples:

20/40



40/70



70/140

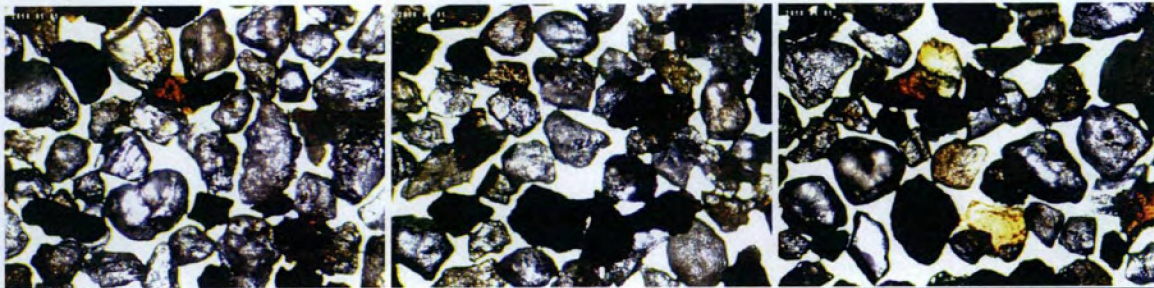


Figure 6: Waypoint 20, Potential Product Pictures – Samples washed using simulated attrition method (70% solids by weight, 2 minutes, x4 magnification)

Appendix C – Tables

Sample Site	Chinchaga B
Sample Name	WP #13
Date Tested	12/4/2012
Latitude	58.58511
Longitude	-118.38700
Surface Ele	1235
Crush 40/70	Washes Combined
Trial 1 Weight	41.1
#70	30.8
pan	10.3
% loss	25.06%
Trial 2 Weight	40.5
#70	29.6
pan	10.8
% loss	26.67%

Table 6.2 - Crush Strength Test Analyses
(Samples evaluated at 5000 PSI)

Waypoint	Sample Gradation	Roundness (0.1)	Sphericity(0.1)
13	20/40	6.0	7.1
	40/70	6.0	7.4
	70/140	5.6	7.0
14	20/40	5.1	7.1
	40/70	5.9	7.0
	70/140	5.6	7.2
20	20/40	6.3	7.1
	40/70	6.2	7.4
	70/140	6.2	6.5

Table 6.3 - Roundness and Sphericity Values for Microscope Pictures

Sample Site	Chinchaga B		Chinchaga B		Chinchaga B		Chinchaga B		Chinchaga B	
Sample Name	WP #13		WP #14		WP #20 @ 14' TOP		WP #31 - #9 (1')		WP #31 - #8 (4')	
Date Tested	12/4/2012		12/4/2012		12/4/2012		12/11/2012		12/11/2012	
Latitude	58.58511		58.60138		58.54249		58.56014		58.56014	
Longitude	-118.38700		-118.34000		-118.38450		-118.39820		-118.39820	
Surface Ele	1235		1172		1268		1275		1278	
Wet Weight Total	631.2		926.9		676.0		815.8		925.3	
Dry Weight Total	618.5		917.0		674.7		813.9		924.2	
% moisture	2.01%		1.07%		0.19%		0.23%		0.12%	
Dry Weight (g)	164.7	229.0	220.1	345.4	156.7	244.0	146.1	211.0	160.7	246.8
Wash Weight (g)	154.4	208.8	202.7	314.0	154.5	237.7	140.2	198.1	154.4	232.7
LBW %	6.25%	8.82%	7.91%	9.09%	1.40%	2.58%	4.04%	6.11%	3.92%	5.71%
% Water by Wight	n/a	30%	n/a	30%	n/a	30%	n/a	30%	n/a	30%
Water Added (ml)	n/a	98.1	n/a	148.0	n/a	104.6	n/a	90.4	n/a	105.8
Attrition Time (min)	0	2	0	2	0	2	0	2	0	2
Sieve	Grams Retained									
#12	0.3	0.3	67.9	97.1	53.3	68.8	2.3	5.7	3.6	8.0
#16	0.3	0.5	18.5	30.0	37.4	60.2	4.0	4.8	5.8	7.8
#20	0.7	1.1	23.9	38.6	28.6	45.8	11.2	13.5	15.3	18.8
#25	0.8	1.2	16.7	26.2	9.2	16.3	12.7	16.5	15.2	20.7
#30	0.9	1.4	14.3	22.1	5.6	9.2	14.7	19.3	17.1	22.8
#35	1.4	2.2	17.6	27.3	4.7	8.7	25.5	33.2	25.8	37.6
#40	1.3	1.6	10.1	15.9	2.8	5.0	19.0	27.8	20.2	31.7
#45	2.9	3.9	9.6	14.8	3.2	5.8	16.0	22.8	16.1	24.8
#50	10.6	16.0	7.1	11.0	3.0	5.6	10.2	15.1	9.7	16.6
#60	27.0	42.2	4.2	6.9	2.0	3.7	8.3	12.6	8.1	14.3
#70	34.1	46.4	2.7	4.4	1.2	2.1	6.6	10.7	7.4	12.5
#100	53.1	68.0	3.8	6.2	1.3	2.4	5.8	9.5	6.0	10.2
#140	14.4	16.5	2.6	4.4	0.6	1.2	1.8	3.1	2.0	3.2
pan	6.5	6.9	3.5	7.4	0.8	1.3	1.5	2.2	1.8	2.7
total	154.3	208.2	202.5	312.3	153.7	236.1	139.6	196.8	154.1	231.7
Sieve	Individual Percent Retained									
#12	0.2%	0.1%	33.5%	31.1%	34.7%	29.1%	1.6%	2.9%	2.3%	3.5%
#16	0.2%	0.2%	9.1%	9.6%	24.3%	25.5%	2.9%	2.4%	3.8%	3.4%
#20	0.5%	0.5%	11.8%	12.4%	18.6%	19.4%	8.0%	6.9%	9.9%	8.1%
#25	0.5%	0.6%	8.2%	8.4%	6.0%	6.9%	9.1%	8.4%	9.9%	8.9%
#30	0.6%	0.7%	7.1%	7.1%	3.6%	3.9%	10.5%	9.8%	11.1%	9.8%
#35	0.9%	1.1%	8.7%	8.7%	3.1%	3.7%	18.3%	16.9%	16.7%	16.2%
#40	0.8%	0.8%	5.0%	5.1%	1.8%	2.1%	13.6%	14.1%	13.1%	13.7%
#45	1.9%	1.9%	4.7%	4.7%	2.1%	2.5%	11.5%	11.6%	10.4%	10.7%
#50	6.9%	7.7%	3.5%	3.5%	2.0%	2.4%	7.3%	7.7%	6.3%	7.2%
#60	17.5%	20.3%	2.1%	2.2%	1.3%	1.6%	5.9%	6.4%	5.3%	6.2%
#70	22.1%	22.3%	1.3%	1.4%	0.8%	0.9%	4.7%	5.4%	4.8%	5.4%
#100	34.4%	32.7%	1.9%	2.0%	0.8%	1.0%	4.2%	4.8%	3.9%	4.4%
#140	9.3%	7.9%	1.3%	1.4%	0.4%	0.5%	1.3%	1.6%	1.3%	1.4%
Pan	4.2%	3.3%	1.7%	2.4%	0.5%	0.6%	1.1%	1.1%	1.2%	1.2%
Total	100.0%	100.0%	100.0%	100.0%	100.0%	100.0%	100.0%	100.0%	100.0%	100.0%
Sieve	In-Size									
12/20	0.6%	0.8%	20.9%	22.0%	42.9%	44.9%	10.9%	9.3%	13.7%	11.5%
20/70	51.2%	55.2%	40.6%	41.2%	20.6%	23.9%	80.9%	80.3%	77.6%	78.1%
20/40	2.9%	3.1%	29.0%	29.3%	14.5%	16.6%	51.5%	49.2%	50.8%	48.7%
40/70	48.3%	52.1%	11.7%	11.9%	6.1%	7.3%	29.4%	31.1%	26.8%	29.4%
70/140	43.7%	40.6%	3.2%	3.4%	1.2%	1.5%	5.4%	6.4%	5.2%	5.8%

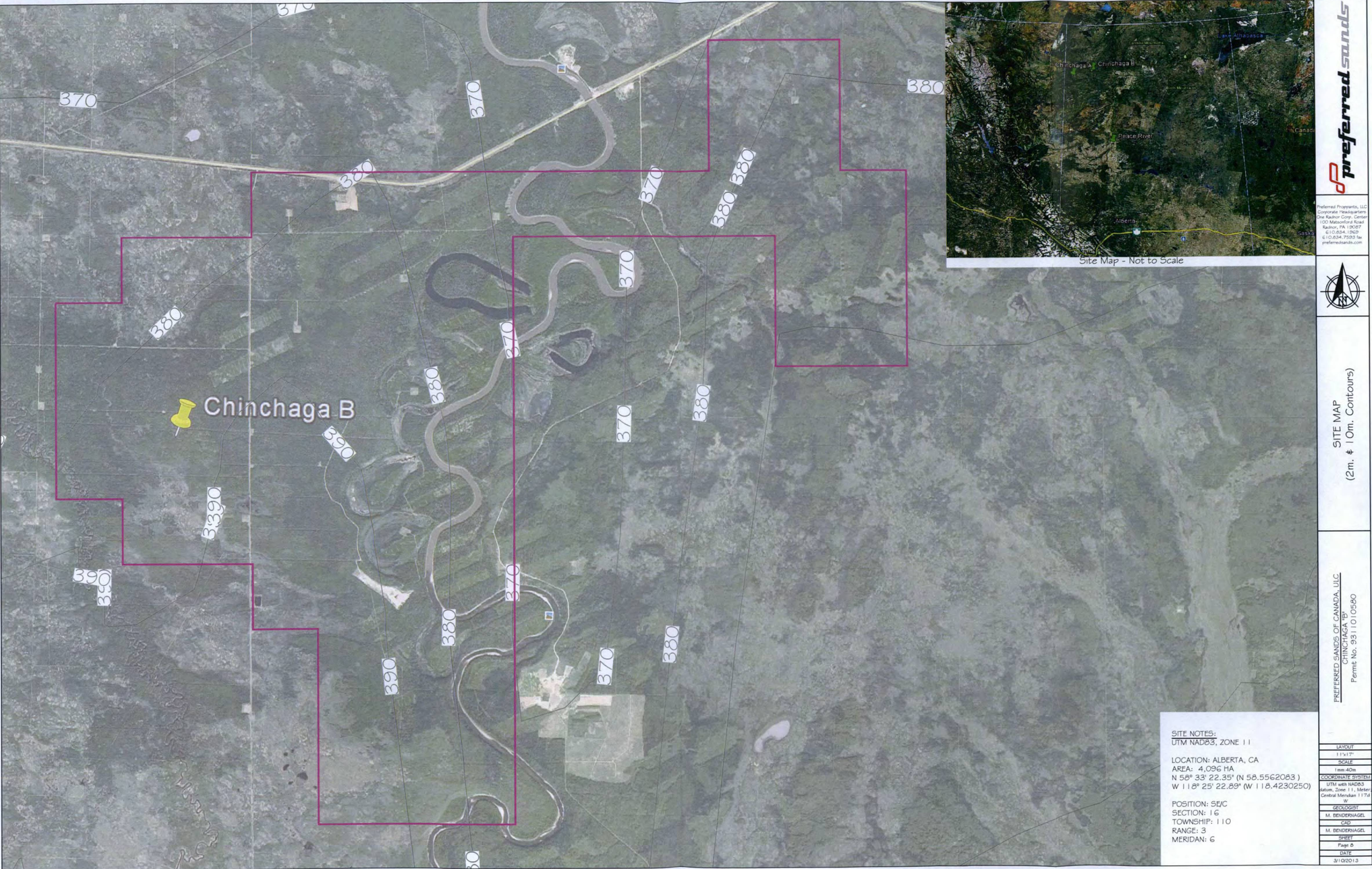
Table 6.3 – Sample Gradation Distribution and Product Content

Lease	Site#	Waypoint	Elevation(ft)	Y	X	Notes	Notes	Pictures
Chinchaga B	1	12	1819	58.5841	-118.38561	old reclaimed mine	swamp/pond	451-6
Chinchaga B	1.2	13	1235	58.58511	-118.38701	embankment sample		457-9
Chinchaga B	2	14	1172	58.60138	-118.33998	old mine site	20 ft face, sample from 8 ft up	460-3
Chinchaga B	2.2	15	1155	58.59663	-118.334	river bank		464-6
Chinchaga B	3	16	1226	58.59691	-118.32665	small excavation site	10 ft, sample from 8 ft up	474-5
Chinchaga B	4	17	1239	58.58531	-118.32272	road condition poor (potholes)	river bank sample	477, 479
Chinchaga B	5	19	1288	58.52656	-118.34228	currently undergoing reclamation, depleted mine site	9 ft embankment, sample 3 ft up	480-6
Chinchaga B	7	20	1268	58.54249	-118.38448	"Rainbow sand and gravel"	sample 14 ft #1, 10 ft # 2, total face ~20 ft	487-94
Chinchaga B	8	21	1316	58.56018	-118.39813	open excavation	~20 ft	495-6
Chinchaga B	8.1	31	1275	58.56014	-118.39816	7 samples, every 3 ft	samples labeled 31-1,31-2,etc.	

Table 6.4 - Major Field Notes and Sample Notations from August Trip

Appendix D - Figures

Figure 6.1



Preferred Sands Chinchaga Metallic Agreements (Lease B)

