

MAR 20120016: ANGEL WING

Angel Wing - A report on the Lost Lemon mine in the Crowsnest Pass area, southwest Alberta.

Received date: Oct 15, 2012

Public release date: Oct 22, 2013

DISCLAIMER

By accessing and using the Alberta Energy website to download or otherwise obtain a scanned mineral assessment report, you ("User") agree to be bound by the following terms and conditions:

- a) Each scanned mineral assessment report that is downloaded or otherwise obtained from Alberta Energy is provided "AS IS", with no warranties or representations of any kind whatsoever from Her Majesty the Queen in Right of Alberta, as represented by the Minister of Energy ("Minister"), expressed or implied, including, but not limited to, no warranties or other representations from the Minister, regarding the content, accuracy, reliability, use or results from the use of or the integrity, completeness, quality or legibility of each such scanned mineral assessment report;
- b) To the fullest extent permitted by applicable laws, the Minister hereby expressly disclaims, and is released from, liability and responsibility for all warranties and conditions, expressed or implied, in relation to each scanned mineral assessment report shown or displayed on the Alberta Energy website including but not limited to warranties as to the satisfactory quality of or the fitness of the scanned mineral assessment report for a particular purpose and warranties as to the non-infringement or other non-violation of the proprietary rights held by any third party in respect of the scanned mineral assessment report;
- c) To the fullest extent permitted by applicable law, the Minister, and the Minister's employees and agents, exclude and disclaim liability to the User for losses and damages of whatsoever nature and howsoever arising including, without limitation, any direct, indirect, special, consequential, punitive or incidental damages, loss of use, loss of data, loss caused by a virus, loss of income or profit, claims of third parties, even if Alberta Energy have been advised of the possibility of such damages or losses, arising out of or in connection with the use of the Alberta Energy website, including the accessing or downloading of the scanned mineral assessment report and the use for any purpose of the scanned mineral assessment report so downloaded or retrieved.
- d) User agrees to indemnify and hold harmless the Minister, and the Minister's employees and agents against and from any and all third party claims, losses, liabilities, demands, actions or proceedings related to the downloading, distribution, transmissions, storage, redistribution, reproduction or exploitation of each scanned mineral assessment report obtained by the User from Alberta Energy.

OCT 15 2012

20120016

PART B

ADMINISTRATIVE DOCUMENTS

ASSESSMENT REPORT

METALIC AND INDUSTRIAL MINERAL PERMIT NUMBER

9310100541

ANGEL WING PROJECT

FOR

DANNY PAUL KLYMIUK

**12050-89ST. EDMONTON
AB. T5B 3W1**

SUBMITTED BY

REPORT AUTHOR

DAN KLYMIUK, PROSPECTOR



OCTOBER, 10, 2012

ANGEL WING PROJECT

TABLE OF CONTENTS

PAGE 1.....INTRODUCTION

PAGE 2.....SUMMARY

PAGE 3.....WORK PERFORMED

PAGE 4.....LEGAL AGREEMENT

PAGE 5.....RESULTS AND CONCLUSION

PAGE 6.....MAP OF WORK AREA

Page 7 - ep

AIK BC certificate

ANGEL WING PROJECT

Danny Paul Klymiuk

October, 10, 2012

INTRODUCTION

People have been searching for the lost lemon mine for the past 140+ years without any success. I was interested to find the truth about lemon and blackjack the two miners who stumbled upon a gold mine. Being a Shaman gold has very little value to me. It was very interesting, I discovered that the curse put on the mine by Bear Paw was real, and will remain. In spiritual conversation with him, his demands are to be met, and then only honest people will be permitted to mine the site or invest. Finding honest investors remains a challenge.

The curse of Bear Paw.....I believe is Alive and Intact. I was given the ability to locate the gold viens, thus finding the spot where blackjack and lemon started panning for gold. After following the york creek back to where it met the pincher creek, I discovered that the york creek is hidden when it meets the pincher creek in blairmore. Studying this I have come to the conclusion that lemon crossed the creek and never noticed how the york creek is hidden. I realize how when he returned in the spring following the north side of the pincher creek through blairmore then coming to Crow Lake confused him. The hidden york creek was the key, something Lemon failed to acknowledge in his panic after killing Blackjack.

The purpose of the assessment work was is to determine where the gold veins are and how deep the veins are, then locating the mother load, (pressure head) the area from where all the veins appear to originate from.

**Angel wing project
Danny Paul Klymiuk**

Page, 1 / 6

SUMMARY

It was in July 2009 when I located the area where blackjack and Lemon had established their camp. Finding the front of their stove and other remains, got me interested in finding more evidence.

Being a Shaman I felt the presence of Blackjack and Lemon. Using my shamanic gift I asked for guidance . Bear Paw made his presence known to me. I was advised on how to locate gold veins. I spent numerous days locating and following veins. Thanks to GPS technology I was able to mark the veins got future use.

Doing research I found the legal land description with GPS coordinates, with the help of aerial photos I determined the legal land description. I applied for all the mineral rights, permit, and license, required to proceed in the exploration. Exploration was granted with pick and shovel. Then applied for approval to do more in-depth exploration, which would include drilling/coring and open pit excavation in order to obtain a bulk sample.

I located what I believe is the pressure-head (mother load area). At present it is only accessible by foot or helicopter.

Hired surveyors to confirm the legal land location and the drilling sites to be explored. As per our survey map. Road use agreements, and trappers permission etc. all consumed a great deal of time and expenses

ANGEL WING PROJECT

Danny Paul Klymiuk

October 10, 2012

Page, 2 / 6

WORK PREFORMED

2011

October, 2,2011 began to explore / drill. Raymond Necula purchased a drilling rig. Having a helper Andy they managed to drill down to 26ft. before the rig broke down requiring major repairs, . The rig was repaired 3weeks later the end of October 2011. Once again they tried drilling only to fail at 8ft. when the same problem occurred. The first drilling sample contained visible gold at 25 – 26ft.

Being a shaman I located the site where blackjack and lemon started panning for gold. The ore appeared rich containing spurs of gold. In October, 2011 removed approx 200lbs of ore that appeared to be very colorful. The assay report came back stating there was 30mg of AA gold in the sample

2012

June 2012 we hired Vitera to do coring for us on 5-04-007 : 29. Being a shaman I located the gold vein and estimated the depth to be 200ft. advised them that they would start finding some gold at 12ft. they started coring at 15ft drilling right through the start of the zone. There was very minimal traces of gold throughout the core. On the first site they cored to 55ft. and quit, Ray stating that 55 ft. was sufficient. They then moved over to the second site I located. I advised them that they would start finding some gold at approx 26ft. they cored to 45 ft. Some gold traces found in the core. The following morning, vandalism to the rig, unable to complete the coring to 500ft. Vitera was to return as soon as they repaired the rig, to date they have not returned to complete the project. Raymond Necula rented a small track hoe and went to the site I had located where we previously took 200lbs of ore from in October 2011. They (Ray & Andy) proceeded to dig with a small track hoe down to a depth of approx 7ft. when they encountered a large boulder/bedrock. They then moved up the bank and dug parallel to the mountain side crossing 2 veins they encountered sand which kept caving in forcing them to quit, as they were unable to get down to the gold vein at 10ft. and 14ft. I had determined by dowsing.

ANGEL WING PROJECT

Danny Paul Klymiuk

October, 10, 2012

Page, 3 / 6

LEGAL AGREEMENT
LAND LOCATION :
5 - 04 - 007: 29: 32W.

Raymond Nacula breached our agreement, he decided he will no longer have any interest in this project, legal land location: 5- 04 - 007: 29; 32w.
At present I am looking forward to completing the exploration program prior to the Dec. access deadline, weather permitting. I will be hiring a new coring company capable of following direct orders.

Map of work preformed on page 6.

ANGEL WING PROJECT
Danny Paul Klymiuk
October,10. 2012
Page, 4 / 6

RESULTS AND CONCLUSION

There have been positive results in all our samples. Our Geologist Daniel Rota believes we should cut a NQ core to a depth of 500 ft. in at least 10 different sites. The sites have already been marked along numerous gold veins. The additional sites will require a heli-rig as my revised application for access was denied.

In conclusion I am planning on drilling the 10 recommended holes and possibly the remaining 8 holes if the contracting company with a heli-rig is able to complete them before the deadline.

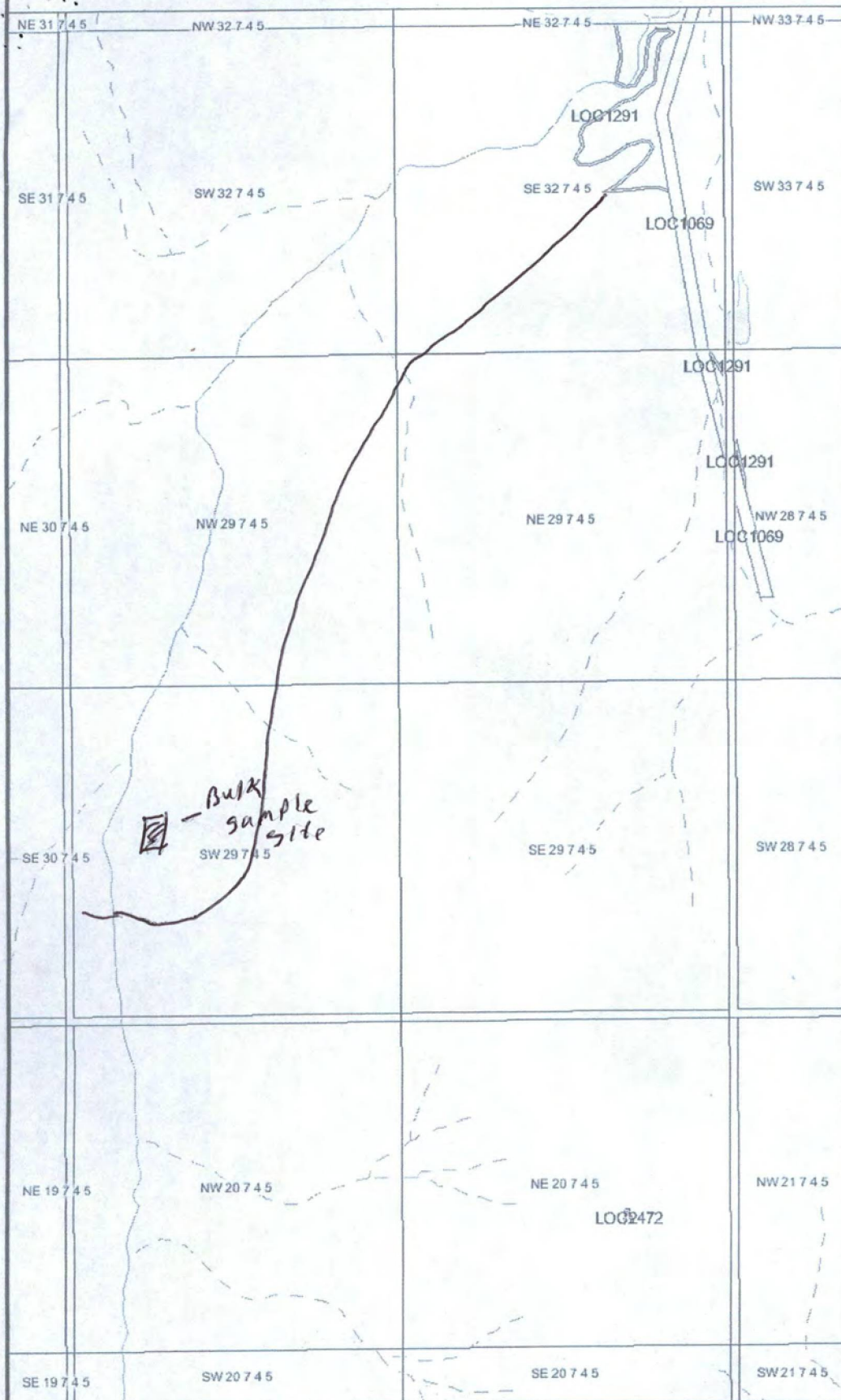
In conclusion: with cooperation from government departments, I feel this may well be the most valuable discovery of the century.

ANGEL WING PROJECT

Danny Paul Klymiuk

October, 10, 1012

Page, 5 / 6



Legend

- Quarter Sections
- Townships
- Hydrography Arcs
 - Arbitrary and Representation Lines
 - Indefinite Stream
 - Perennial Stream
 - Recurring Stream
 - Spillway
 - Aqueduct
 - Canal
 - Ditch
 - Perennial Oxbow
 - Recurring Oxbow
- Hydrography Polygons
 - Canal
 - Dugout
 - Icefield
 - Islands
 - Lagoon
 - Perennial Lake
 - Recurring Lake
 - Perennial Oxbow
 - Recurring Oxbow
 - Quarry
 - Reservoir
 - River
 - Wetland
- LSAS Conflict
- LOC - License Of Occupation
- Capital or Major City
 - Capital City
 - Major City
- Road
 - Major Road
 - Ferry Route
- Water
- Boundaries
- Ocean

- Trail
 X Drilling site
 □ Bulk sample site

Display may contain: Base data provided by Spatial Data Warehouse Ltd. Communication Towers provided by NAV CANADA. Wellsite and raw pipeline data provided by IHS Energy (Canada) Ltd. ©GeoEye, all rights reserved. ©lunctus Geomatics Corp.

Information as depicted is subject to change, therefore the Government of Alberta assumes no responsibility for discrepancies at time of use.

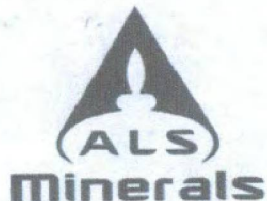
© 2010 Government of Alberta

0 275 550 m.

Scale: 1:15,000



Angel wing Project
 Page 6/6
 October 10, 2012



ALS Canada Ltd.
 2103 Dollarton Hwy
 North Vancouver BC V7H 0A7
 Phone: 604 984 0221 Fax: 604 984 0218 www.alsglobal.com

To: BLACKJACK GOLD MINING INC.
 15108 - 55 AVENUE
 EDMONTON AB T6H 4Z2

Page
 Finalized Date: 5- DEC- 2
 This copy reported
 22- DEC- ;
 Account: BLJ

QC CERTIFICATE VA11240726


Project:
 P.O. No.:
 This report is for 6 Rock samples submitted to our lab in Vancouver, BC, Canada on
 16- NOV- 2011.
 The following have access to data associated with this certificate:
 DANNY KLYMIUK RAY NECULA

SAMPLE PREPARATION	
ALS CODE	DESCRIPTION
FND- 02	Find Sample for Addn Analysis

ANALYTICAL PROCEDURES		
ALS CODE	DESCRIPTION	INSTRUMENT
Au- AA23	Au 30g FA- AA finish	AAS

To: BLACKJACK GOLD MINING INC.
 ATTN: RAY NECULA
 15108 - 55 AVENUE
 EDMONTON AB T6H 4Z2

This is the Final Report and supersedes any preliminary report with this certificate number. Results apply to samples as submitted. All pages of this report have been checked and approved for release.

Signature: 
 Colin Ramshaw, Vancouver Laboratory Manager



ALS Canada Ltd.
 2103 Dollarton Hwy
 North Vancouver BC V7H 0A7
 Phone: 604 984 0221 Fax: 604 984 0218 www.alsglobal.com

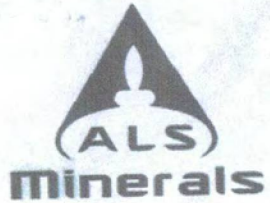
To: BLACKJACK GOLD MINING INC.
 15108 - 55 AVENUE
 EDMONTON AB T6H 4Z2

Page: 1
 Total # Pages: 2
 Finalized Date: 5- DEC-11
 Account: BLJ

QC CERTIFICATE OF ANALYSIS VA11240726

Sample Description	Method Analyte Units LOR	Au-AA23 Au ppm 0.005
STANDARDS		
OREAS 65a		0.541
Target Range - Lower Bound		0.484
Upper Bound		0.556
OxL78		5.93
Target Range - Lower Bound		5.52
Upper Bound		6.23
BLANKS		
BLANK		<0.005
Target Range - Lower Bound		<0.005
Upper Bound		0.010
DUPLICATES		
ORIGINAL		0.020
DUP		0.021
Target Range - Lower Bound		0.014
Upper Bound		0.027

Page 8



ALS Canada Ltd.
2103 Dollarton Hwy
North Vancouver BC V7H 0A7
Phone: 604 984 0221 Fax: 604 984 0218 www.alsglobal.com

To: BLACKJACK GOLD MINING INC.
15108 - 55 AVENUE
EDMONTON AB T6H 4Z2

Page: 2 -
Total # Pages: 2
Finalized Date: 5- DEC- 20
Account: BLJA

CERTIFICATE OF ANALYSIS VA11240726

Sample Description	Method Analyte Units LOR	Au-AA23 Au ppm 0.005
#1A		<0.005
#1B		<0.005
#2		<0.005
#3		0.005
#4		<0.005
#5		<0.005