

# MAR 20120006: CLEARWATER

Clearwater - A report on the quality and extraction logistics of landscape rocks in the Clearwater region of Alberta

Received date: Mar 22, 2012

Public release date: Mar 27, 2013

## **DISCLAIMER**

By accessing and using the Alberta Energy website to download or otherwise obtain a scanned mineral assessment report, you ("User") agree to be bound by the following terms and conditions:

- a) Each scanned mineral assessment report that is downloaded or otherwise obtained from Alberta Energy is provided "AS IS", with no warranties or representations of any kind whatsoever from Her Majesty the Queen in Right of Alberta, as represented by the Minister of Energy ("Minister"), expressed or implied, including, but not limited to, no warranties or other representations from the Minister, regarding the content, accuracy, reliability, use or results from the use of or the integrity, completeness, quality or legibility of each such scanned mineral assessment report;
- b) To the fullest extent permitted by applicable laws, the Minister hereby expressly disclaims, and is released from, liability and responsibility for all warranties and conditions, expressed or implied, in relation to each scanned mineral assessment report shown or displayed on the Alberta Energy website including but not limited to warranties as to the satisfactory quality of or the fitness of the scanned mineral assessment report for a particular purpose and warranties as to the non-infringement or other non-violation of the proprietary rights held by any third party in respect of the scanned mineral assessment report;
- c) To the fullest extent permitted by applicable law, the Minister, and the Minister's employees and agents, exclude and disclaim liability to the User for losses and damages of whatsoever nature and howsoever arising including, without limitation, any direct, indirect, special, consequential, punitive or incidental damages, loss of use, loss of data, loss caused by a virus, loss of income or profit, claims of third parties, even if Alberta Energy have been advised of the possibility of such damages or losses, arising out of or in connection with the use of the Alberta Energy website, including the accessing or downloading of the scanned mineral assessment report and the use for any purpose of the scanned mineral assessment report so downloaded or retrieved.
- d) User agrees to indemnify and hold harmless the Minister, and the Minister's employees and agents against and from any and all third party claims, losses, liabilities, demands, actions or proceedings related to the downloading, distribution, transmissions, storage, redistribution, reproduction or exploitation of each scanned mineral assessment report obtained by the User from Alberta Energy.

**BURNCO Rock Products Ltd**  
200, 155 Glendeer Circle SE  
Box 1480, Station T  
Calgary, AB, Canada T2H 2P9

**burnco.com**  
Main 403 255 2600  
Fax 403 255 0323

**100 YEARS**

MAR 22 2012  
20120006

**ALBERTA ENERGY,  
OFFICIAL MINERAL ASSESSMENT  
REPORT OF RECORD**

**ASSESSMENT REPORT**

**SHALE AND SANDSTONE IN THE CLEARWATER REGION**

**BURNCO ROCK PRODUCTS, LTD.**

**PERMIT NUMBER:**

**9302020054**

**PART B & C**

**BURNCO ROCK PRODUCTS LTD.**

**MARCH 16. 2012**

1

**TABLE OF CONTENTS**

**1.0 Introduction ..... 3**

    1.1 Purpose ..... 3

    1.2 Scope ..... 3

**2.0 Summary ..... 4**

**3.0 Work Performed ..... 5**

**4.0 Results ..... 5**

**5.0 Conclusion ..... 5**

**6.0 Part C: MAP ..... 6**

    6.1 Permit #9302020054 ..... 6

    6.2 Oversize Map of Claim ..... 7

## 1.0 INTRODUCTION

### 1.1 Purpose

BURNCO Rock Products Ltd. analyzed their mineral title claim in the Clearwater region of Alberta under permit number 9302020054. This report is written to explain the results of our exploration in regards to quality and logistical extraction of possible landscape rock deposits within this permit.

### 1.2 Scope

This report will explain plausibility of further expenditure on development or exploration of this claim. Logistic considerations are focused upon as leading factors in considering this site as a landscape rock quarry.

**BURNCO Rock Products Ltd**  
200, 155 Glendeer Circle SE  
Box 1480, Station T  
Calgary, AB, Canada T2H 2P9

**burnco.com**  
Main 403 255 2600  
Fax 403 255 0323



## 2.0 SUMMARY

The claim covered by Permit number 9302020054 was examined by foot and was found that completing a road to mine the deposit will be complicated.

### 3.0 WORK PERFORMED

Our crew of two people were able to get their truck close to the designated site and went the rest of the way on a quad.

They dug down about two feet to check what the material looked like below the surface. The material was determined to be of marginal use for landscaping needs but might serve as road material.

Meetings were then conducted in the office of Sun Pine and with their representative's at the claim site to determine the feasibility of building a road. There were several negatives regarding a road into this site and it was decided that more study was required. The crew covered up the test area and left the site for BURNCO to decide on the next course of action.

### 4.0 RESULTS

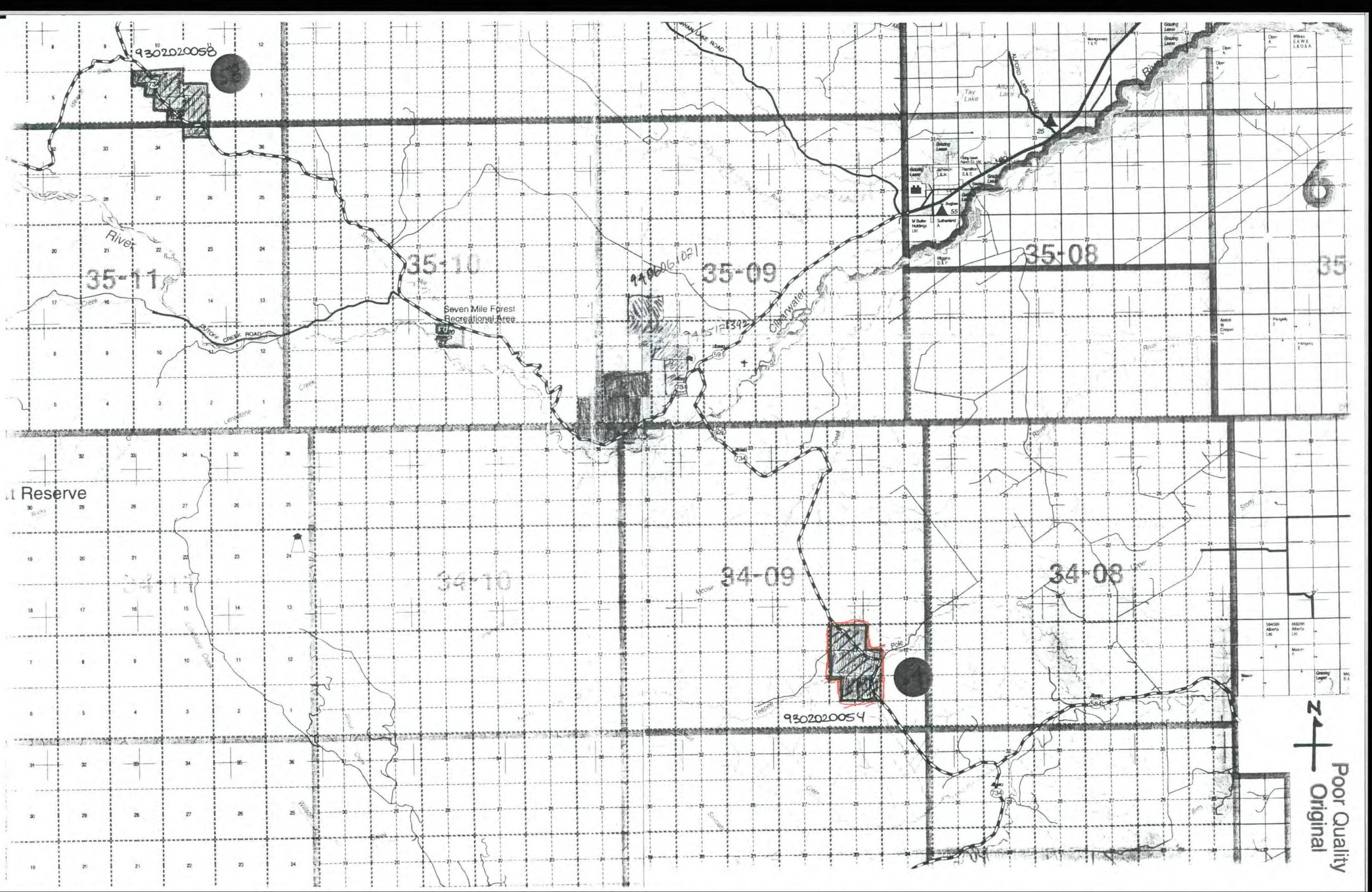
As of this date a decision on whether to proceed or quit has not been reached as costing is being compiled and studied.

### 5.0 CONCLUSION

The project has been put on hold to study the costs involved against the revenue that can be generated over a reasonable period of time. More study is required.



Bill Bakala  
BURNCO Rock Products Ltd.



9302020058

35-11

35-10

35-09

35-08

35

Seven Mile Forest  
Recreational Area

Reserve

34-10

34-09

34-08

9302020054

Poor Quality  
Original

# 8.3 Permit # 9302020054



## Legend

- Quarter Section
- Alberta Boundary
- Meridian
- Township
- Section
- Major River
- Major Lake
- Major Road
- 30 Day Pending
- Reserved/Withdrawn - Restrictions
- No Surface Access - Restrictions
- Subject To - Restrictions
- Other - Restrictions
- Municipality
- Special Lease - 037
- Phosphate Exploration - 069
- Permit - 093
- Other - 042
- Natural Gas Storage - 036
- Lease - 094
- Application Special Lease - A37
- Application Phosphate Exploration - A69
- Application Permit - A93
- Application Other - A42
- Application Natural Gas Storage - A36
- Application Lease - A94
- Mineral Ownership Undetermined
- Minerals Not Owned by the Alberta Crown
- Parks and Protected Areas
- National Park
- X Samples Taken

May 20, 2010

DISCLAIMER: Information presented on this map originates from various sources and is for general use only. Please be advised that some information may have been added, amended and deleted since this map was created.

Base Data Provided by Spatial Data Warehouse Ltd. Copyright of Government of Alberta.

Map center: 51° 54' 2" N, 115° 10' 18" W