

MAR 20100002: OXBOW

Received date: Mar 15, 2010

Public release date: Jun 10, 2011

DISCLAIMER

By accessing and using the Alberta Energy website to download or otherwise obtain a scanned mineral assessment report, you ("User") agree to be bound by the following terms and conditions:

- a) Each scanned mineral assessment report that is downloaded or otherwise obtained from Alberta Energy is provided "AS IS", with no warranties or representations of any kind whatsoever from Her Majesty the Queen in Right of Alberta, as represented by the Minister of Energy ("Minister"), expressed or implied, including, but not limited to, no warranties or other representations from the Minister, regarding the content, accuracy, reliability, use or results from the use of or the integrity, completeness, quality or legibility of each such scanned mineral assessment report;
- b) To the fullest extent permitted by applicable laws, the Minister hereby expressly disclaims, and is released from, liability and responsibility for all warranties and conditions, expressed or implied, in relation to each scanned mineral assessment report shown or displayed on the Alberta Energy website including but not limited to warranties as to the satisfactory quality of or the fitness of the scanned mineral assessment report for a particular purpose and warranties as to the non-infringement or other non-violation of the proprietary rights held by any third party in respect of the scanned mineral assessment report;
- c) To the fullest extent permitted by applicable law, the Minister, and the Minister's employees and agents, exclude and disclaim liability to the User for losses and damages of whatsoever nature and howsoever arising including, without limitation, any direct, indirect, special, consequential, punitive or incidental damages, loss of use, loss of data, loss caused by a virus, loss of income or profit, claims of third parties, even if Alberta Energy have been advised of the possibility of such damages or losses, arising out of or in connection with the use of the Alberta Energy website, including the accessing or downloading of the scanned mineral assessment report and the use for any purpose of the scanned mineral assessment report so downloaded or retrieved.
- d) User agrees to indemnify and hold harmless the Minister, and the Minister's employees and agents against and from any and all third party claims, losses, liabilities, demands, actions or proceedings related to the downloading, distribution, transmissions, storage, redistribution, reproduction or exploitation of each scanned mineral assessment report obtained by the User from Alberta Energy.

PART B

(Technical Report)

ASSESSMENT REPORT

Metallic and Industrial Mineral Permit Number
9306020543

Project Name : Oxbow

SE 12-54-23-W4

For

ELDON GALLOWAY

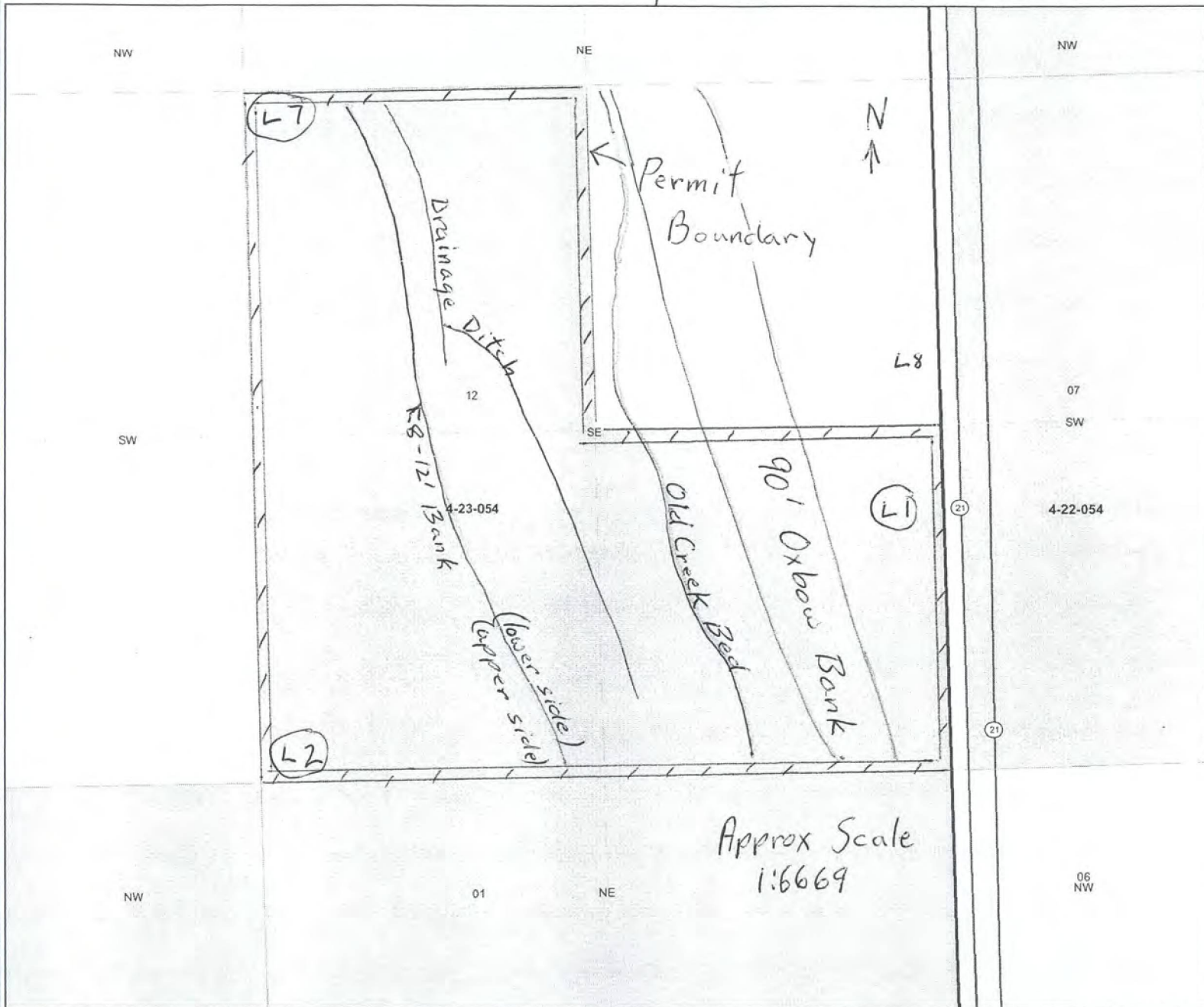
Submitted by

ELDON GALLOWAY

January 1, 2010

Table of Contents

PART B - TECHNICAL REPORT	Page
Map of Current Permit and Boundaries.....	3
Summary.....	4
Introduction.....	4
Regional Geology.....	4
Exploration.....	5
Conclusion.....	5
Detail of Expenditures.....	5
Summary of Expenditures.....	5
Qualifications.....	6
Sample Location Map.....	7
Hole Logs.....	8



- Legend**
- Quarter Section
 - Alberta Boundary
 - Meridian
 - Township
 - Legal Sub-Division
 - Section
 - Major River
 - Major Lake
 - Major Road
 - 30 Day Pending
 - Reserved/Withdrawn - Restrictions
 - No Surface Access - Restrictions
 - Subject To - Restrictions
 - Other - Restrictions Municipality
 - Special Lease - 037
 - Phosphate Exploration - 069
 - Permit - 093
 - Other - 042
 - Natural Gas Storage - 036
 - Lease - 094
 - Application Special Lease - A37
 - Application Phosphate Exploration - A69
 - Application Permit - A93
 - Application Other - A42
 - Application Natural Gas Storage - A36
 - Application Lease - A94
 - Mineral Ownership Undetermined
 - Minerals Not Owned by the Alberta Crown
 - Parks and Protected Areas
 - National Park

February 7, 2010

DISCLAIMER: Information presented on this map originates from various sources and is for general use only. Please be advised that some information may have been added, amended and deleted since this map was created.

Base Data Provided by Spatial Data Warehouse Ltd. Copyright of Government of Alberta.

Notes: Permit # 9306020543

Map center: 53° 38' 45.2" N, 113° 15' 7.5" W

4-23-054: 12 L1, L2, L7

SUMMARY

Initial studies of the upper geological strata have begun. Using a backhoe, ten holes were dug. From each hole, four samples were extracted from various depths, on Nov 18, 2009. Sample hole location are indicated on the accompanying map, PART B, Page 7. Hole logs can be found on PART B, Page 8. Aggregate sources could indicate mineral deposits. Analysis of the samples has not begun, but will be completed in 2010. Analysis will entail panning sample to determine whether there is sufficient mineral to mine.

INTRODUCTION

With a pending gravel operation on this property, I believe it is prudent to evaluate the viability of mineral extraction from the resource before it is removed from the site. Mineral extraction could not only increase return on each tonne of aggregate, but also increase the amount of economically viable aggregate. With only a small amount of possible aggregate resource left on my property, I felt that it was crucial to test for valuable mineral content.

REGIONAL GEOLOGY

The North Saskatchewan River oxbow, in which this property lies on the east edge of, has had a great deal of sand and gravel excavated from it over the last 50 years. To our knowledge, mineral extraction from the aggregate has not occurred. Drill holes suggest there is approximately 16 hectare of sand and gravel aggregate on the exploration site running parallel to the oxbow bank. This is where we are concentrating our testing. The water table is within 2 feet of the surface.

EXPLORATION

Geography, historical mining in the area, and drill hole testing suggested an economical gravel operation may be feasible. To further the study, a backhoe was brought in to substantiate initial tests.

Holes were dug to the maximum reach of the hoe, or to the hardpan. Samples from various depths of the hole were taken and later in 2010, will be analyzed by panning samples for gold, silver, and platinum content. Note: Samples have not yet been analyzed so results are not yet available.

CONCLUSION

The backhoe testing confirmed the aggregate resource. Some economically viable gravel removal is possible without mineral extraction added into the equation, however quantity of that which is viable, is very dependant upon overburden removal costs. The high water table and dewatering will present considerable cost increases. If mineral extraction is viable, it could not only increase return on each tonne of aggregate, but also increase the amount of economically viable aggregate that is removed.

Detailed Expenditure Statement

Category	Description	Total Cost
Subcontracting Services		
Geological Contractor	Doblanco Contracting -Dig test holes- 8 hrs. -Gather Samples for analysis	\$1120

GRAND TOTAL		\$1120


Summary of Expenditures

\$1120 has been spent on expenditures for exploration and assessment during this reporting period.

AUTHOR QUALIFICATIONS

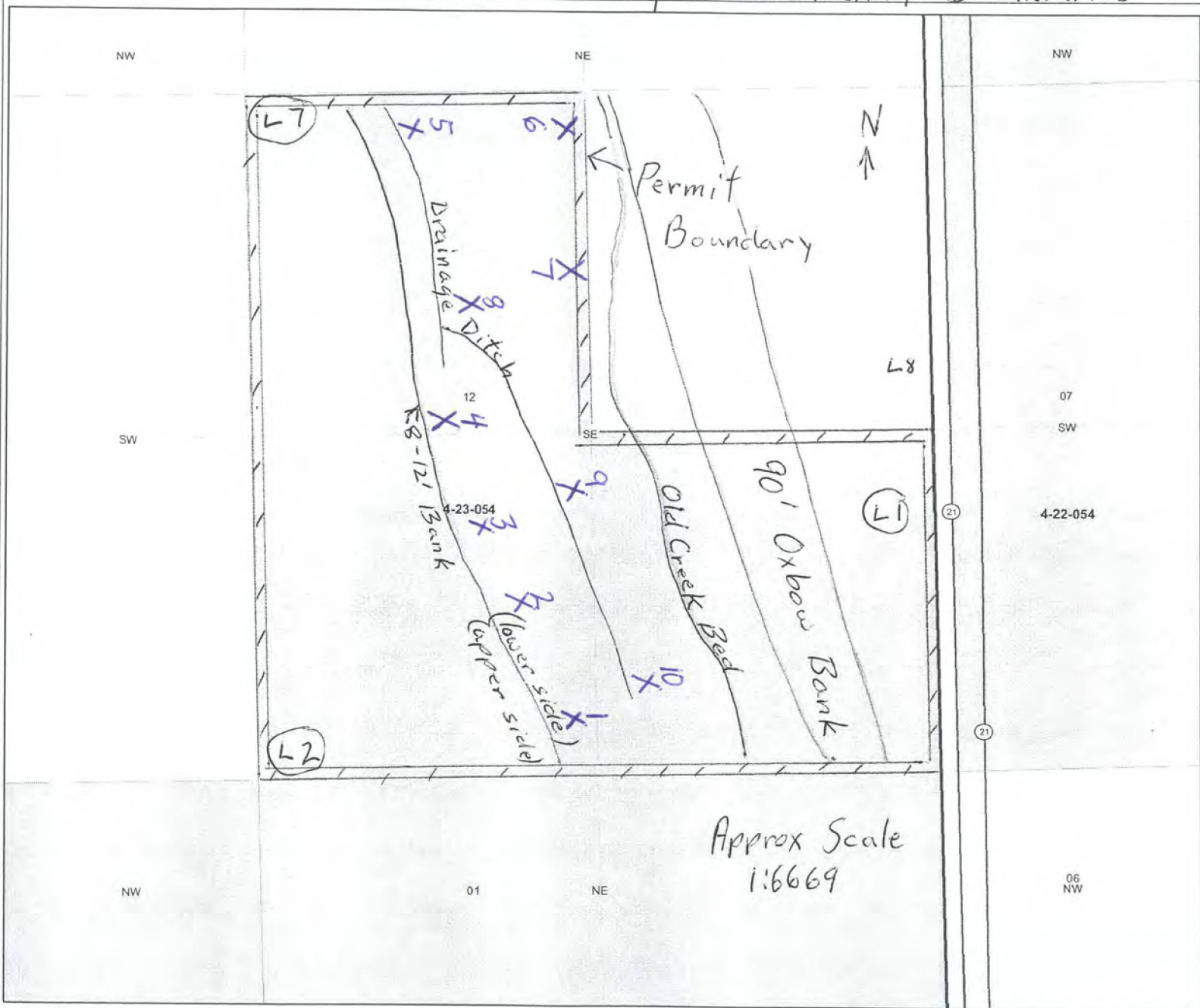
I, Eldon Galloway, residing at Fort Saskatchewan, Alberta, Canada, do hereby certify that:

1. I am an independent prospector.
2. I have only become a recreational prospector in Alberta since 2006, and have very limited practical experience.
3. I am not aware of any material fact or material change with respect to the subject matter of the Report that is not reflected in the Report, or the omission to disclose which makes the Report misleading.


Eldon Galloway

Fort Saskatchewan Alberta, Canada

Feb 20 '10
Date



Approx Scale
1:6669

Legend

- Quarter Section
- Alberta Boundary
- Meridian
- Township
- Legal Sub-Division
- Section
- Major River
- Major Lake
- Major Road
- 30 Day Pending
- Reserved/Withdrawn - Restrictions
- No Surface Access - Restrictions
- Subject To - Restrictions
- Other - Restrictions Municipality
- Special Lease - 037
- Phosphate Exploration - 069
- Permit - 093
- Other - 042
- Natural Gas Storage - 036
- Lease - 094
- Application Special Lease - A37
- Application Phosphate Exploration - A69
- Application Permit - A93
- Application Other - A42
- Application Natural Gas Storage - A36
- Application Lease - A94
- Mineral Ownership Undetermined
- Minerals Not Owned by the Alberta Crown
- Parks and Protected Areas
- National Park

February 7, 2010

DISCLAIMER: Information presented on this map originates from various sources and is for general use only. Please be advised that some information may have been added, amended and deleted since this map was created.

Base Data Provided by Spatial Data Warehouse Ltd. Copyright of Government of Alberta.

Notes: Permit # 9306020543

Map center: 53° 38' 45.2" N, 113° 15' 7.5" W

4-23-054: 12 L1, L2, L7

HOLE LOGS

Numbers in soil structure columns (ie topsoil, clay, sand, etc.) are indications physical characteristics and the depths of the structure. They are recorded in feet from ground level. All samples were taken at the lowest depth indicated in each column. All samples were 1.5 cups. Hole number correspond to locations numbered on accompanying map, Page 6. *Geo-graphic co-ordinates were not taken.*

For example Hole #3 The clay depth was found from .5 feet to 6 feet below ground level and a 1.5 cup sample was taken at the 6 foot depth.

HOLE #	TOPSOIL	CLAY	SAND	GRAVEL	HARDPAN
1	0-.5'	.5-8'		8-14'	14'
2	0-.5'	.5-8'		8-13'	13'
3	0-.5'	.5-6'		6-12'	12'
4	0-.5'	.5-3'	3-4'	4-12'+	
5	0-.5'	.5-10		10-5+	
6	0-.5'	.5-14'			14'
7	0-.5'	.5-14'			14'
8	0-.5'	.5-7'		7-14'	14'
9	0-.5'	.5-8.5'		8.5-13.5'+	
10	0-.5'	.5-13'			13'