

# MAR 20080002: SMOKY RIVER

Received date: Mar 03, 2008

Public release date: Apr 01, 2009

## **DISCLAIMER**

By accessing and using the Alberta Energy website to download or otherwise obtain a scanned mineral assessment report, you ("User") agree to be bound by the following terms and conditions:

- a) Each scanned mineral assessment report that is downloaded or otherwise obtained from Alberta Energy is provided "AS IS", with no warranties or representations of any kind whatsoever from Her Majesty the Queen in Right of Alberta, as represented by the Minister of Energy ("Minister"), expressed or implied, including, but not limited to, no warranties or other representations from the Minister, regarding the content, accuracy, reliability, use or results from the use of or the integrity, completeness, quality or legibility of each such scanned mineral assessment report;
- b) To the fullest extent permitted by applicable laws, the Minister hereby expressly disclaims, and is released from, liability and responsibility for all warranties and conditions, expressed or implied, in relation to each scanned mineral assessment report shown or displayed on the Alberta Energy website including but not limited to warranties as to the satisfactory quality of or the fitness of the scanned mineral assessment report for a particular purpose and warranties as to the non-infringement or other non-violation of the proprietary rights held by any third party in respect of the scanned mineral assessment report;
- c) To the fullest extent permitted by applicable law, the Minister, and the Minister's employees and agents, exclude and disclaim liability to the User for losses and damages of whatsoever nature and howsoever arising including, without limitation, any direct, indirect, special, consequential, punitive or incidental damages, loss of use, loss of data, loss caused by a virus, loss of income or profit, claims of third parties, even if Alberta Energy have been advised of the possibility of such damages or losses, arising out of or in connection with the use of the Alberta Energy website, including the accessing or downloading of the scanned mineral assessment report and the use for any purpose of the scanned mineral assessment report so downloaded or retrieved.
- d) User agrees to indemnify and hold harmless the Minister, and the Minister's employees and agents against and from any and all third party claims, losses, liabilities, demands, actions or proceedings related to the downloading, distribution, transmissions, storage, redistribution, reproduction or exploitation of each scanned mineral assessment report obtained by the User from Alberta Energy.

MAR 03 2008  
20080002

**ASSESSMENT REPORT**

**PART "B"**

**"SMOKY RIVER PROJECT"**

**ROY A. BICKELL**  
**METALLIC & INDUSTRIAL MINERALS**  
**PERMIT NO. 9306020474**

**SUBMITTED BY:**

**ROY A. BICKELL**  
**FEBRUARY 28, 2008**



.....  
Roy A. Bickell

.....  
February 28, 2008

# TABLE OF CONTENTS

## PART "B"

TITLE PAGE .....	I
TABLE OF CONTENTS .....	II
SUMMARY .....	1
INTRODUCTION .....	1
WORK PERFORMED .....	1
MAP .....	2
QUALIFICATIONS .....	3
RESULTS .....	3
CONCLUSION .....	3
EXPENDITURE BREAKDOWN .....	4

## SUMMARY

I have lived all my life (77 years) in the Debolt/Grande Prairie area. Early pioneers of the area have passed on stories of the possibilities of finding metallic minerals in the area of the permit using relatively inexpensive equipment. It should be quite easy to prove or disprove the stories. By progressively checking one area each year we should arrive at a decision. To date 20 percent of the area of the permit has been investigated with no positive results.

### INTRODUCTION AND WORK PERFORMED

Using a hand-held wand detector and by walking slowly back and forth on a predetermined grid, using a Global Positioning System supplemented by Line-of-site and flagging, a portion of the permit area was covered. The area covered is noted on the attached map.

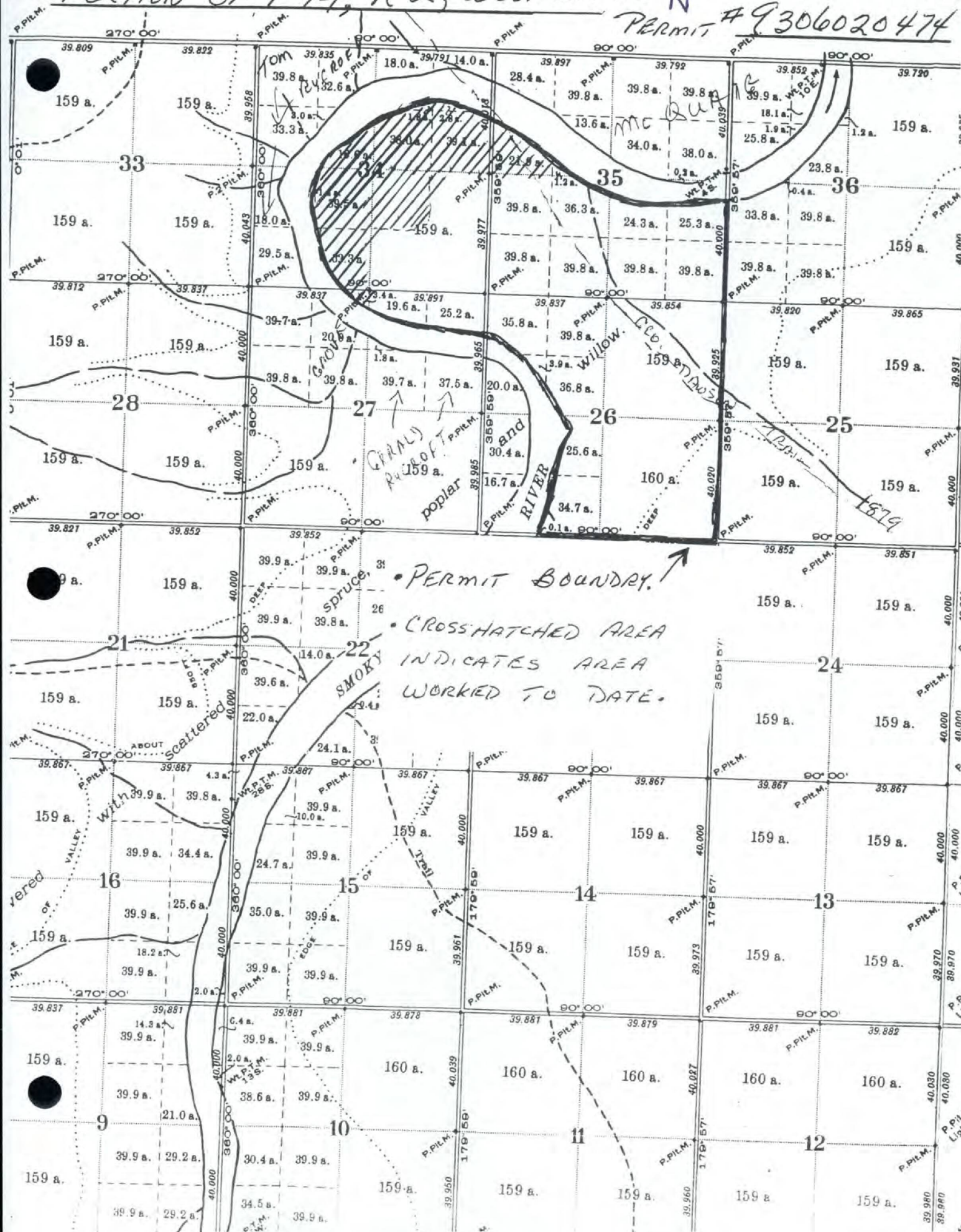
The above noted work was done by me (Roy Bickell) during a number of day trips to the site. Travel was by boat or quad at various times during June, August and September.



PORTION OF T 74, R 2, WEST 6th M.

SCALE 40 CHAINS TO AN INCH

PERMIT # 9306020474



• PERMIT BOUNDARY. ↑

• CROSS-HATCHED AREA INDICATES AREA WORKED TO DATE.

Scattered with valley of

SMOKEY TRAIL VALLEY

poplar and RIVER

Willow

DEEP

1879

135

## **QUALIFICATIONS**

- Amateur fossil collector for 40 years
- Past President - Grande Prairie Museum
- Member - Geology and Archaeology Research Council
- Member - Paliontology Society of the Peace
- Knowledgeable in the operation of a wand-type hand-held metal detector and GPS

## **RESULTS**

- To date absolutely nothing has been found

## **CONCLUSION**

- Plan to continue exploring the remainder of the permit area with the metal detector as time and weather permit, during the summer months.
- I am not requesting any cancellation or amendments.

**PART "B"**

**BREAKDOWN STATEMENT**

PROSPECTING	\$3,090.00
MAPS	\$ 56.00
<b>SUB TOTAL</b>	<b>\$3,146.00</b>
<b>Administration @10%</b>	<b>\$ 314.00</b>
<b>TOTAL</b>	<b><u>\$3,460.00</u></b>

This work was done during the months of June, August and September at various times that weather and time allowed.

**PROJECT NAME:**

**SMOKY RIVER PROJECT No. 9306020474**