

MAR 20040012: PINCHER CREEK

Received date: Aug 03, 2004

Public release date: Aug 29, 2005

DISCLAIMER

By accessing and using the Alberta Energy website to download or otherwise obtain a scanned mineral assessment report, you ("User") agree to be bound by the following terms and conditions:

- a) Each scanned mineral assessment report that is downloaded or otherwise obtained from Alberta Energy is provided "AS IS", with no warranties or representations of any kind whatsoever from Her Majesty the Queen in Right of Alberta, as represented by the Minister of Energy ("Minister"), expressed or implied, including, but not limited to, no warranties or other representations from the Minister, regarding the content, accuracy, reliability, use or results from the use of or the integrity, completeness, quality or legibility of each such scanned mineral assessment report;
- b) To the fullest extent permitted by applicable laws, the Minister hereby expressly disclaims, and is released from, liability and responsibility for all warranties and conditions, expressed or implied, in relation to each scanned mineral assessment report shown or displayed on the Alberta Energy website including but not limited to warranties as to the satisfactory quality of or the fitness of the scanned mineral assessment report for a particular purpose and warranties as to the non-infringement or other non-violation of the proprietary rights held by any third party in respect of the scanned mineral assessment report;
- c) To the fullest extent permitted by applicable law, the Minister, and the Minister's employees and agents, exclude and disclaim liability to the User for losses and damages of whatsoever nature and howsoever arising including, without limitation, any direct, indirect, special, consequential, punitive or incidental damages, loss of use, loss of data, loss caused by a virus, loss of income or profit, claims of third parties, even if Alberta Energy have been advised of the possibility of such damages or losses, arising out of or in connection with the use of the Alberta Energy website, including the accessing or downloading of the scanned mineral assessment report and the use for any purpose of the scanned mineral assessment report so downloaded or retrieved.
- d) User agrees to indemnify and hold harmless the Minister, and the Minister's employees and agents against and from any and all third party claims, losses, liabilities, demands, actions or proceedings related to the downloading, distribution, transmissions, storage, redistribution, reproduction or exploitation of each scanned mineral assessment report obtained by the User from Alberta Energy.

20040012
AUG 03 2003

LAMBERT & Co.

Fax Transmission

- Please call to confirm receipt
- Please respond by return fax
- Call only if transmission is incomplete

Date: July 30 2004
To: Hazel Hansen
Fax number: 780-422-5447
From: Brian Lambert
Our phone: ~~403-710 7217~~
Our fax: 403- 271-4029

of pages including cover page: **12**

Hazel,

Please review the attached report as per conditions of our Permit # 93020300112

Thank You

Brian Lambert



Lambert & Co.

10711 Maplebend Dr. SE, Calgary, AB. Canada T2J 1X3
Ph: 430 278 7951 Fx: 403 271 4029 Email: b.k.lambert@shaw.ca

July 27 2004

Mineral agreements and Sales
Alberta Resource Development
9915 108 St.
Edmonton, AB T5J 2G6

Please see attached two (2) copies of the assessment work report for Metallic & Industrial Minerals for Permit #9302030112. Filed on Behalf of Brian D. Lambert & Lambert & Co. et al.

We wish to retain Permit # 9302030112 for further exploration and testing for possible other viable sites within the township covered by this permit.

Authorization is attached to reproduce or copy any or all of this report.

If you require any further information please contact me at...

Res: 403 278 7951, Cell: ~~403 710 7217~~ or at the above fax or Email address.

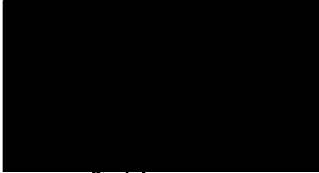
Sincerely



Brian D. Lambert
Lambert & Co.

Authorization to Reproduce or Copy

I, Brian D. Lambert hereby authorize the Government of Alberta to reproduce or copy the attached Assessment Report at the end of the 1 year confidentiality period.



**Brian D. Lambert
Lambert & Co.**

ASSESSMENT REPORT

PINCHER CREEK PROJECT

**Brian D. Lambert
Operating as
LAMBERT & Co.**

Metallic and Industrial Minerals Permit no. 9302030112

Submitted by: Brian D. Lambert

July 27, 2004

TABLE OF CONTENTS

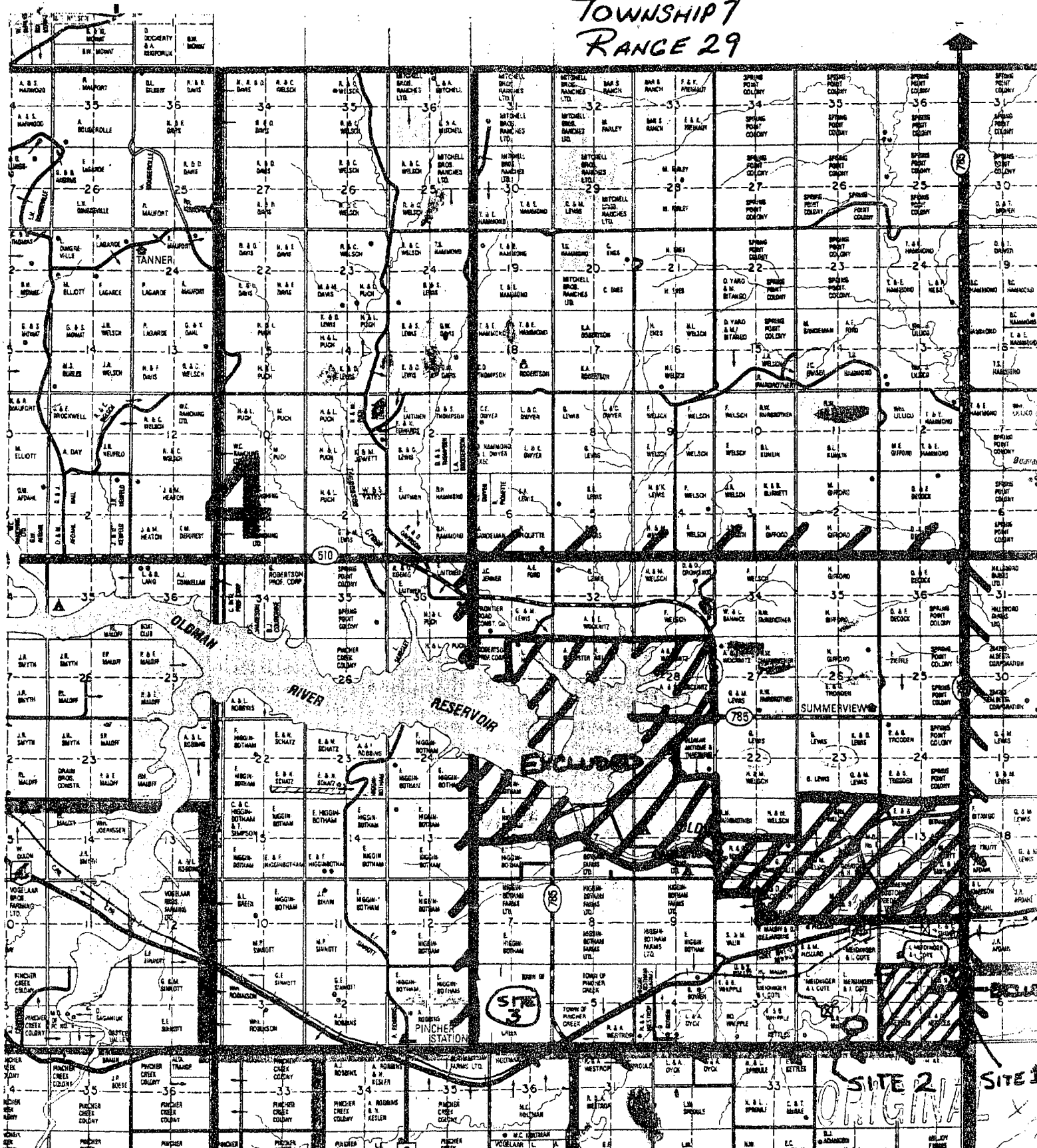
Map Identifying Permit No. and boundary.....	Pg 1
Statement of expenditures	Pg 2
Allocation of Expenditures	Pg 3
Amendments and cancellations.....	Pg 4
Summary	Pg 4
Introduction	Pg 5
Regional Geology	Pg 5
Exploration	Pg 5,6
Conclusions	Pg 6
References	Pg 7

PERMIT #93 02030112

MAP OF AREA OF PERMIT BOUNDARY

-113.7959233 49.5237961
-113.9199761 49.5897091

WEST OF 4th MERIDIAN
TOWNSHIP 7
RANGE 29



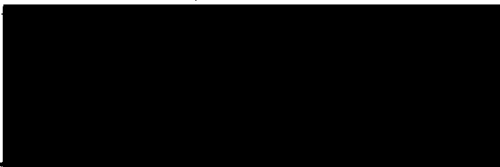
STATEMENT OF EXPENDITURES

Metallic and Industrial Minerals Permit No. 9302030112

Description of Expense	Total Cost
Salary & Wages	\$ 0.00
Field Costs	
Accommodations & Meals	\$ 1,022.36
Fuel	\$ 750.00
Travel expenses	\$ 386.00
Rental Equipment	\$ 483.54
Vehicle repairs	\$ 610.19
Office Charges, Administrative, General Overhead	\$ 300.00
Total Expenditure	\$ 3,552.09

I certify that these expenditures are valid and were incurred in conducting assessment work on the above permit.

Signed:



Brian D. Lambert

**Signature /Stamp
Commissioner of Oaths**

A handwritten signature in cursive script, appearing to read 'J. Thompson'.

JACQUELINE THOMPSON
A COMMISSIONER OF OATHS
IN AND FOR THE PROVINCE OF ALBERTA
MY COMMISSION EXPIRES FEB. 06/07
APPOINTEE #0706356

ORIGINAL

Allocation of Expenditures

Permit No.	Ha.	Expenditure Required	Expenditure Assigned
9302030112	9,216	\$4,467.21	\$4,467.21

Summary

As this is a single permit and covers a single township all applicable expenditures are applied to 9302030112 alone.

Amendments and Cancellations

PERMIT No.	Lands retained	Ha.
9302030112	All	3,896

Introduction

This report will cover the intended types and sizes of deposits of Sandstone sought as well as some historical data regarding several sites which show promise for further development.

As a result of our research we have 're-discovered' a resource which, a century ago was considered a major potential for export development and we are convinced it could well be again.

Regional Geology

The formation we seek to develop in particular is called the Porcupine Hills Formation and is comprised of a series of layers of Tertiary era deposits of metamorphic sandstone. This formation is characterized by siliceous sandstone with limestone as the primary binder. The region is underlain by successive layers of Cretaceous and then Jurassic sandstones to a depth of approximately 3,600 ft. The region is stable geologically.

Exploration

We have conducted a thorough survey of the existing sites which were in production in the past as well as surveys of potential sites never before in production or development.

Site # 1

Twp 7, Range 29, W4M: NE 1/4 Section 1

This site was in production as the Crowsnest Stone Co. Ltd. of Lethbridge Alberta until 1914. It was then out of production until 1920 and finally ceased production permanently in 1929.

The stone available at this site is of very high quality and consistency. Testing reveals it to be among the very best available, not only in this location but in Alberta as a whole.

Unfortunately the Mineral rights to this section are free hold by The Mobil-EXXON Corporation and they have refused outright to grant a lease on these lands.

Site # 2

Twp 7, Range 29, W4M, SE 1/4 Section 2

This site has never been in production however much research exists on the stone in this location. Virtually identical to the stone deposit in site#1, This site has many advantages to it.

Good road access, Landowner approval, and viable quantities of stone all purport to make this a highly desirable site for development.

There are some potential obstacles however.

The site is situated immediately south of the Pincher Creek river and thus water contamination could be a concern in obtaining a development permit from the municipality.

It has also been identified as a First Nations pre-historic buffalo jump kill site. This may also become an insurmountable obstacle to obtaining a development permit.

Site #3

Twp 7, Range 29, W4M

82H112

This site has not been developed in the past. However it has been excavated to some extent by the local MD as a source for rubble to be used as fill and in erosion control.

Extensive development may be possible since it has excellent road access and Water/power is available nearby.

CONCLUSIONS

Although the area of the permit is large, a substantial portion of it is un-accessable for a variety of reasons.

- Two substantial roads and one Major highway and a Transcontinental Railroad right of way pass through the permit area.**
- The northern portion of the Permit area is restricted due to the proximity of the Oldman River and associated recreational areas.**

Only the extreme south of the permit area has any development potential, however the potential of these areas are significant and worthy of further exploration.

REFERENCES

CALGARY in Sandstone - Cunliffe, 1964. Calgary Public Library, Calgary AB

Building and ornamental Stones of Canada - Parks, 1918, Parliamentary Library, Ottawa, ON

EUB Alberta Geological Survey - Energy and Utilities Board 2001, Calgary, AB