

MAR 20030002: PRAIRIE CREEK

Received date: Mar 03, 2003

Public release date: Mar 03, 2004

DISCLAIMER

By accessing and using the Alberta Energy website to download or otherwise obtain a scanned mineral assessment report, you ("User") agree to be bound by the following terms and conditions:

- a) Each scanned mineral assessment report that is downloaded or otherwise obtained from Alberta Energy is provided "AS IS", with no warranties or representations of any kind whatsoever from Her Majesty the Queen in Right of Alberta, as represented by the Minister of Energy ("Minister"), expressed or implied, including, but not limited to, no warranties or other representations from the Minister, regarding the content, accuracy, reliability, use or results from the use of or the integrity, completeness, quality or legibility of each such scanned mineral assessment report;
- b) To the fullest extent permitted by applicable laws, the Minister hereby expressly disclaims, and is released from, liability and responsibility for all warranties and conditions, expressed or implied, in relation to each scanned mineral assessment report shown or displayed on the Alberta Energy website including but not limited to warranties as to the satisfactory quality of or the fitness of the scanned mineral assessment report for a particular purpose and warranties as to the non-infringement or other non-violation of the proprietary rights held by any third party in respect of the scanned mineral assessment report;
- c) To the fullest extent permitted by applicable law, the Minister, and the Minister's employees and agents, exclude and disclaim liability to the User for losses and damages of whatsoever nature and howsoever arising including, without limitation, any direct, indirect, special, consequential, punitive or incidental damages, loss of use, loss of data, loss caused by a virus, loss of income or profit, claims of third parties, even if Alberta Energy have been advised of the possibility of such damages or losses, arising out of or in connection with the use of the Alberta Energy website, including the accessing or downloading of the scanned mineral assessment report and the use for any purpose of the scanned mineral assessment report so downloaded or retrieved.
- d) User agrees to indemnify and hold harmless the Minister, and the Minister's employees and agents against and from any and all third party claims, losses, liabilities, demands, actions or proceedings related to the downloading, distribution, transmissions, storage, redistribution, reproduction or exploitation of each scanned mineral assessment report obtained by the User from Alberta Energy.

20030002

MAR 03 2003

PRAIRIE CREEK

Quarries Ltd.

ASSESSMENT WORK REPORT

METALLIC AND INDUSTRIAL MINERALS PERMIT No. 9396110054

File No. MME – 970382

TWP 37 RGE 11 W5M

November 21, 2000 – November 21, 2002

This Report has been prepared and
Submitted by



Don H. Scheurman – Manager
Prairie Creek Quarries Ltd.

ASSESSMENT WORK REPORT

METALLIC AND INDUSTRIAL MINERALS PERMIT No. 9396110054
File No. MME – 970382

TABLE OF CONTENTS

Introduction	1
Location and Access	1
Work Performed	2
Chemical Analyses	3
Expenditures	4
Conclusion	5
Appendix "A"	6

ASSESSMENT WORK REPORT

METALLIC AND INDUSTRIAL MINERALS PERMIT No. 9396110054
File No. MME – 970382

LIST OF FIGURES

Figure		Page
Fig. 1	Location of seismic line showing Test hole locations	1
Fig. 2	Helicopter lifting drill to next location	2
Fig. 3	Test hole locations superimposed on Aerial photo	2

LIST OF TABLES

Table 1.	Chemical analyses of test samples Loring Laboratories Ltd.	3
Table 2.	List of Expenditures	4

INTRODUCTION

Prairie Creek Quarries Ltd. has retained lands, under Metallic and Industrial Mineral Permit No. 9396110054, that adjoin their Metallic and Industrial Minerals Lease No. 9499020001. The company is currently quarrying limestone materials from Mineral Surface Lease No. MSL 000946 in this same area.

This company became involved in a minor exploration program to determine the nature and extent or subsurface minerals present in the lands surrounding their current leases.

LOCATION AND ACCESS

A comprehensive drilling program was conducted in later October 2002 by a drilling contractor and included seismic lines that crossed our quarry area. Of particular interest was line S37 (shown in Fig. 1). § 3 B:3, 4

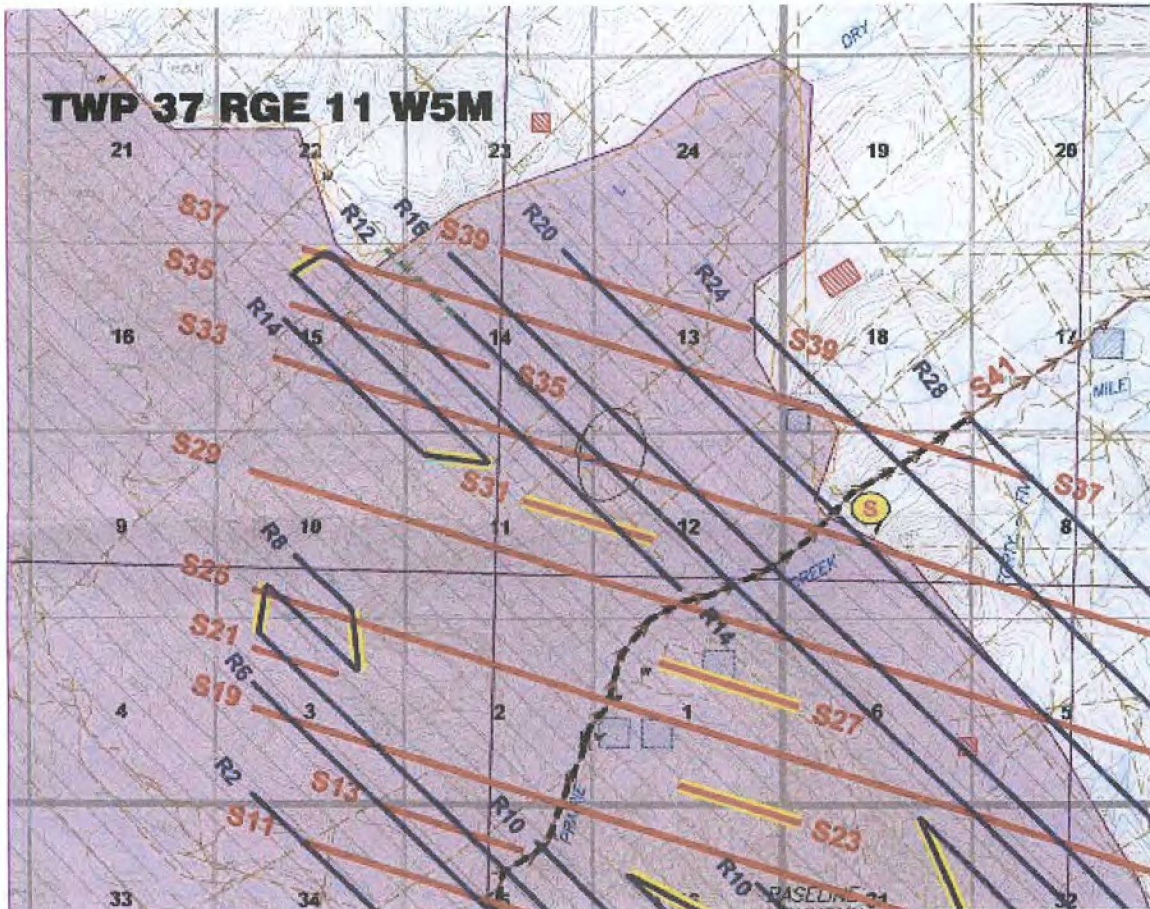


Figure 1 – Seismic lines for drilling program

This line S37 included drilling in Sec13, W1/2 14, and Sec15 of our permit area.

Drill samples were obtained by Prairie Creek Quarries in conjunction with the seismic drilling program carried out by another contractor resulting in little to no surface disturbance as drilling equipment was airlifted from site to site by helicopter (Fig. 2).



Figure 2

WORK PERFORMED

A series of test holes were drilled along line S37 spaced 78 meters apart and to a depth of approximately 12 meters (40 feet). These test hole locations are shown in Fig. 3. Samples obtained from test holes encountering rock were gathered and taken to Loring Laboratories for chemical analysis.



Figure 3 – Test Hole Locations

The types of rock found during this drilling activity consisted of shales, limestones and sandstones. Chemical analyses were conducted on samples obtained from these test holes. The results of these chemical analyses are included in the following table - WHOLEROCK ICP ANALYSIS - Loring Laboratories Ltd.



Loring Laboratories Ltd.

629 Beaverdam Road N.E.,
Calgary Alberta T2K 4W7
Tel: 274-2777 Fax: 275-0541



TO: FISHCREEK EXCAVATING

5007 - 28th Street S.E.

Calgary, Alberta

T2B 3B4

Attn: Don Scheurman

FILE: 45342

DATE: February 6, 2003

WHOLEROCK ICP ANALYSIS

Sample I.D.	Al ₂ O ₃ %	Ba ppm	CaO %	Cr ppm	Fe ₂ O ₃ %	K ₂ O %	MgO %	MnO %	Na ₂ O %	Ni ppm	P ₂ O ₅ %	SO ₃ %	SiO ₂ %	Sr ppm	TiO ₂ %	V ppm	LOI@1000 %	SUM %
137-100(30-35)	6.94	478	1.36	48	10.99	1.13	1.96	0.25	0.09	51	0.234	0.22	68.86	63	0.06	96	7.79	99.89
137-100(35-40)	11.66	949	0.55	21	6.81	2.05	1.85	0.12	0.12	62	0.147	0.40	70.24	89	0.08	124	5.89	99.90
137-102(30-35)	10.34	890	1.14	23	10.19	1.61	1.77	0.23	0.10	62	0.227	0.23	66.42	77	0.07	117	7.07	99.40
137-105(15-20)	2.56	532	0.13	48	1.20	0.50	0.22	0.00	0.04	14	0.107	0.15	93.18	30	0.02	48	1.68	99.79
137-105(20-25)	2.03	260	0.61	141	3.00	0.44	0.41	0.01	0.05	20	0.158	0.48	90.25	28	0.02	42	2.26	99.72
137-105(25-30)	2.55	229	2.06	81	4.28	0.56	1.44	0.02	0.04	33	0.158	0.37	84.65	31	0.01	49	3.68	99.83
137-105(30-40)	4.91	573	3.54	66	6.60	1.00	2.75	0.08	0.05	57	0.203	4.52	69.09	51	0.03	82	6.81	99.57
137-106(35-40)	4.66	264	0.24	54	5.46	0.83	0.39	0.01	0.04	17	0.104	0.29	83.99	55	0.03	33	3.48	99.52
137-114(30-35)	2.78	191	13.16	66	3.11	0.72	3.64	0.07	0.04	36	0.198	0.38	62.47	182	0.01	47	13.29	99.85
137-114(35-40)	2.65	220	14.79	50	2.36	0.64	2.99	0.05	0.03	34	0.161	0.34	61.85	216	0.01	40	14.06	99.93
137-115(35-40)	6.33	331	10.62	31	3.39	1.32	2.37	0.06	0.06	41	0.423	1.37	62.00	171	0.04	84	11.41	99.39
137-117(25-30)	3.21	537	5.70	64	3.42	0.76	2.13	0.06	0.03	37	0.243	0.47	73.92	96	0.01	59	9.75	99.71
137-117(30-35)	6.77	230	5.09	56	1.78	1.40	1.27	0.02	0.06	37	0.574	0.35	74.23	160	0.02	98	8.05	99.61
137-117(35-40)	9.42	440	1.91	45	3.96	1.66	0.83	0.06	0.06	51	0.473	0.53	74.05	149	0.04	132	6.66	99.65
137-118(15-20)	5.61	270	8.69	66	2.76	1.28	2.67	0.02	0.06	46	0.384	0.19	65.82	116	0.01	104	12.46	99.95
137-118(20-30)	3.56	348	12.03	78	2.48	0.88	2.01	0.06	0.04	47	0.288	0.26	66.01	153	0.01	64	12.29	99.92
137-118(30-40)	2.30	259	11.49	79	2.66	0.59	2.01	0.05	0.03	31	0.304	0.28	67.93	105	0.01	47	12.33	99.98
137-119(25-30)	2.66	887	0.62	85	3.03	0.55	0.25	0.11	0.03	33	0.261	0.19	89.24	48	0.01	57	2.86	99.81
137-119(30-35)	1.40	244	0.27	145	2.85	0.27	0.12	0.04	0.03	30	0.118	0.11	92.68	102	0.01	57	1.93	99.82
137-119(35-40)	1.62	212	0.23	180	4.73	0.31	0.12	0.02	0.03	25	0.138	0.07	90.83	174	0.01	52	1.88	99.98
137-156	4.23	496	0.52	50	3.08	0.38	0.69	0.04	0.08	36	0.090	0.02	88.65	<20	0.05	58	2.03	99.86

0.2g. Sample fused with LiBO₂, and dissolved in 5% HNO₃.

Certified by:



ASSESSMENT WORK REPORT EXPENDITURES

METALLIC AND INDUSTRIAL MINERALS PERMIT No. 9396110054

PRAIRIE CREEK PROSPECT

DATE	CONTRACTOR	DESCRIPTION	AMOUNT
Oct 15 / 16 2002	Fish Creek Excavating Ltd. 42.5 manhours	Gathering samples Foreman / Operator (2 days) Supervisor and vehicles	1960.00
Oct 15 / 16 2002	Neyo Drilling and Blasting	Provided manpower to assist in gathering samples	745.20
Oct 15 / 16 2002	Bertram Drilling Corp. BDC	Prairie Creek gathered samples from seismic drilling program performed by BDC on lands leased and permitted by Prairie Creek Quarries Ltd.	No Direct Cost
Feb 06 2003	Loring Laboratories Ltd.	Provide chemical analyses of test hole samples	635.25
Feb 18 2003	The Orthoshop	Plotted test hole locations (UTM coordinates) onto Orthophoto mapping obtained thru Fulton & Associates Surveyors Ltd.	360.00 550.00
		TOTAL DIRECT EXPENDITURES	4250.45


LEAH BERGEN
 Commissioner for Oaths
 My Commission expires Dec. 7, 2004

CONCLUSION

A series of test holes were drilled within the permit area held by Prairie Creek Quarries Ltd. (METALLIC AND INDUSTRIAL MINERALS PERMIT No. 9396110054) on land adjacent to a limestone deposit operated by Prairie Creek.

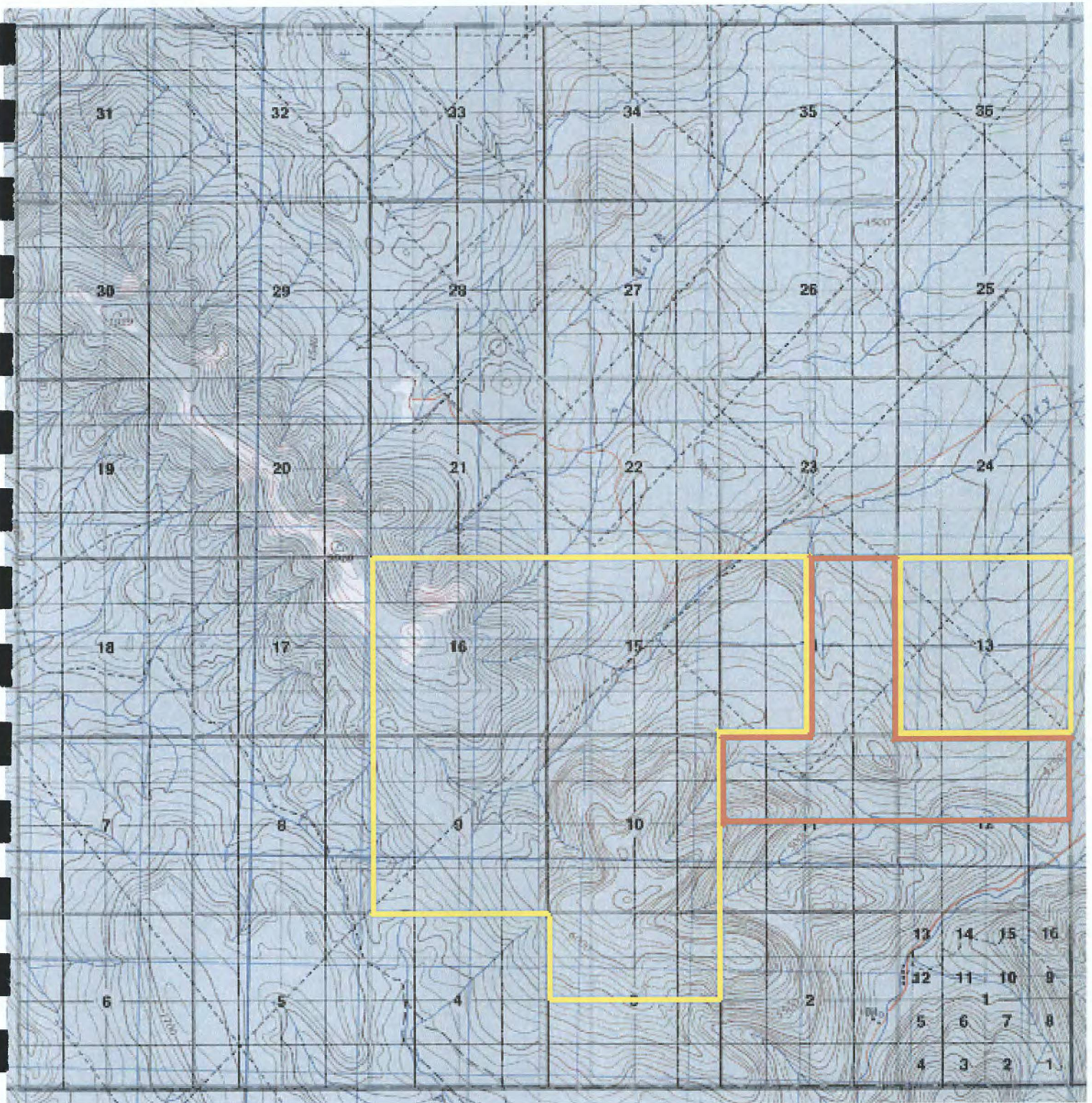
Numerous test holes were drilled within our permit area along line S37. Samples from those test holes encountering hard rock were gathered for lab analysis. The hard rock appears to be mainly shale or sandstone.

In a number of test holes, shale was present consisting primarily of silica, with relatively high alumina and iron oxide content. These compounds, together with limestone are necessary for the manufacture of cement.

In several of the other test holes sandstone was encountered comprised mostly of silica together with alumina and iron oxide, however, to a lesser degree than present in the shales. Depending on the strength and durability of this sandstone, there may be applications as a building stone.

Although the test holes show the presence of shale and sandstone, the quality and extent of these reserves will require additional investigation.

Appendix A



Prairie Creek Quarries Ltd.
Twp 37 Rge 11 W5M
Scale 1: 50 000

Metallic and Industrial Minerals Permit
No. 9396110054

Mineral Surface Lease
No. MSL 000946