

# MAR 19990003: PRAIRIE CREEK

Received date: Jan 27, 1999

Public release date: Jan 28, 2000

## **DISCLAIMER**

By accessing and using the Alberta Energy website to download or otherwise obtain a scanned mineral assessment report, you ("User") agree to be bound by the following terms and conditions:

- a) Each scanned mineral assessment report that is downloaded or otherwise obtained from Alberta Energy is provided "AS IS", with no warranties or representations of any kind whatsoever from Her Majesty the Queen in Right of Alberta, as represented by the Minister of Energy ("Minister"), expressed or implied, including, but not limited to, no warranties or other representations from the Minister, regarding the content, accuracy, reliability, use or results from the use of or the integrity, completeness, quality or legibility of each such scanned mineral assessment report;
- b) To the fullest extent permitted by applicable laws, the Minister hereby expressly disclaims, and is released from, liability and responsibility for all warranties and conditions, expressed or implied, in relation to each scanned mineral assessment report shown or displayed on the Alberta Energy website including but not limited to warranties as to the satisfactory quality of or the fitness of the scanned mineral assessment report for a particular purpose and warranties as to the non-infringement or other non-violation of the proprietary rights held by any third party in respect of the scanned mineral assessment report;
- c) To the fullest extent permitted by applicable law, the Minister, and the Minister's employees and agents, exclude and disclaim liability to the User for losses and damages of whatsoever nature and howsoever arising including, without limitation, any direct, indirect, special, consequential, punitive or incidental damages, loss of use, loss of data, loss caused by a virus, loss of income or profit, claims of third parties, even if Alberta Energy have been advised of the possibility of such damages or losses, arising out of or in connection with the use of the Alberta Energy website, including the accessing or downloading of the scanned mineral assessment report and the use for any purpose of the scanned mineral assessment report so downloaded or retrieved.
- d) User agrees to indemnify and hold harmless the Minister, and the Minister's employees and agents against and from any and all third party claims, losses, liabilities, demands, actions or proceedings related to the downloading, distribution, transmissions, storage, redistribution, reproduction or exploitation of each scanned mineral assessment report obtained by the User from Alberta Energy.

19990003

**PRAIRIE  
CREEK  
Quarries Ltd.**

**ASSESSMENT WORK REPORT**

METALLIC AND INDUSTRIAL MINERALS PERMIT NO. 9396110054

File No. MME - 970382

TWP 37 RGE 11 W5M

NOV. 21, 1996 --- NOV. 21, 1998

This Report has been Prepared and  
Submitted by



Don H. Scheurman - Manager  
Prairie Creek Quarries Ltd.

## ASSESSMENT WORK REPORT

METALLIC AND INDUSTRIAL MINERALS PERMIT NO. 9396110054  
File No. MME - 970382

### TABLE OF CONTENTS

|                                     |    |
|-------------------------------------|----|
| Permit Tabulation .....             | 1  |
| Sequence of Events .....            | 1  |
| Introduction .....                  | 1  |
| Permit Location .....               | 2  |
| Preliminary Explortation .....      | 3  |
| Location and Access .....           | 5  |
| Work Performed .....                | 6  |
| Table 2. Stage 1 Expenditures ..... | 7  |
| Table 3. Stage 2 Expenditures ..... | 8  |
| Drill Hole Locations .....          | 9  |
| Conclusion .....                    | 11 |
| Appendix "A" .....                  | 14 |
| Appendix "B" .....                  | 15 |
| Appendix "C" .....                  | 17 |

## ASSESSMENT WORK REPORT

METALLIC AND INDUSTRIAL MINERALS PERMIT NO. 9396110054  
File No. MME - 970382

### LIST OF FIGURES

| <b>Figure</b> |   | <b>Page</b> |
|---------------|---|-------------|
| Fig. 1.       | Test Drilling Location                          | 2           |
| Fig. 2.       | TAY RIVER - Map                                 | 3           |
| Fig. 3.       | Limestone Outcropping                           | 3           |
| Fig. 4.       | Aerial Photo of Limestone Outcropping           | 3           |
| Fig. 5.       | Grab Sample Locations ( GPS )                   | 4           |
| Fig. 6.       | Outcrop Sample Test Results                     | 4           |
| Fig. 7.       | Access to Drilling Location                     | 5           |
| Fig. 8.       | Stage 2 Test Hole Drilling Locations ( Area A ) | 9           |
| Fig. 9.       | Stage 2 Test Hole Drilling Locations ( Area B ) | 10          |
| Fig. 10.      | Testhole Data ( Line E )                        | 11          |
| Fig. 11.      | Testhole Data ( Line F )                        | 12          |
| Fig. 12.      | Testhole Data ( Line G )                        | 13          |

### LIST OF TABLES

|          |                                    |   |
|----------|------------------------------------|---|
| Table 1. | Grab Sample Test Results           | 4 |
| Table 2. | Stage 1 Testing Costs              | 7 |
| Table 3. | Stage 2 Costs - Total Expenditures | 8 |

## **ASSESSMENT WORK REPORT**

METALLIC AND INDUSTRIAL MINERALS PERMIT NO. 9396110054  
File No. MME - 970382

### **PERMIT TABULATION**

- Original application submitted by Nordegg Lime Ltd.
- Metallic and Industrial Minerals Permit No. 9396110054 issued to Nordegg Lime Ltd. November 29, 1996 with Term Commencement Date November 21, 1996.
- December 8, 1997 - Agreement transferred from Nordegg Lime Ltd. to Prairie Creek Quarries Ltd. - Registration Number: 9710232
- Contact Person - Don Scheurman - Manager - Prairie Creek Quarries Ltd.  
Phone - (403) 235-1177  
Facsimile - (403) 569-0390

### **SEQUENCE OF EVENTS**

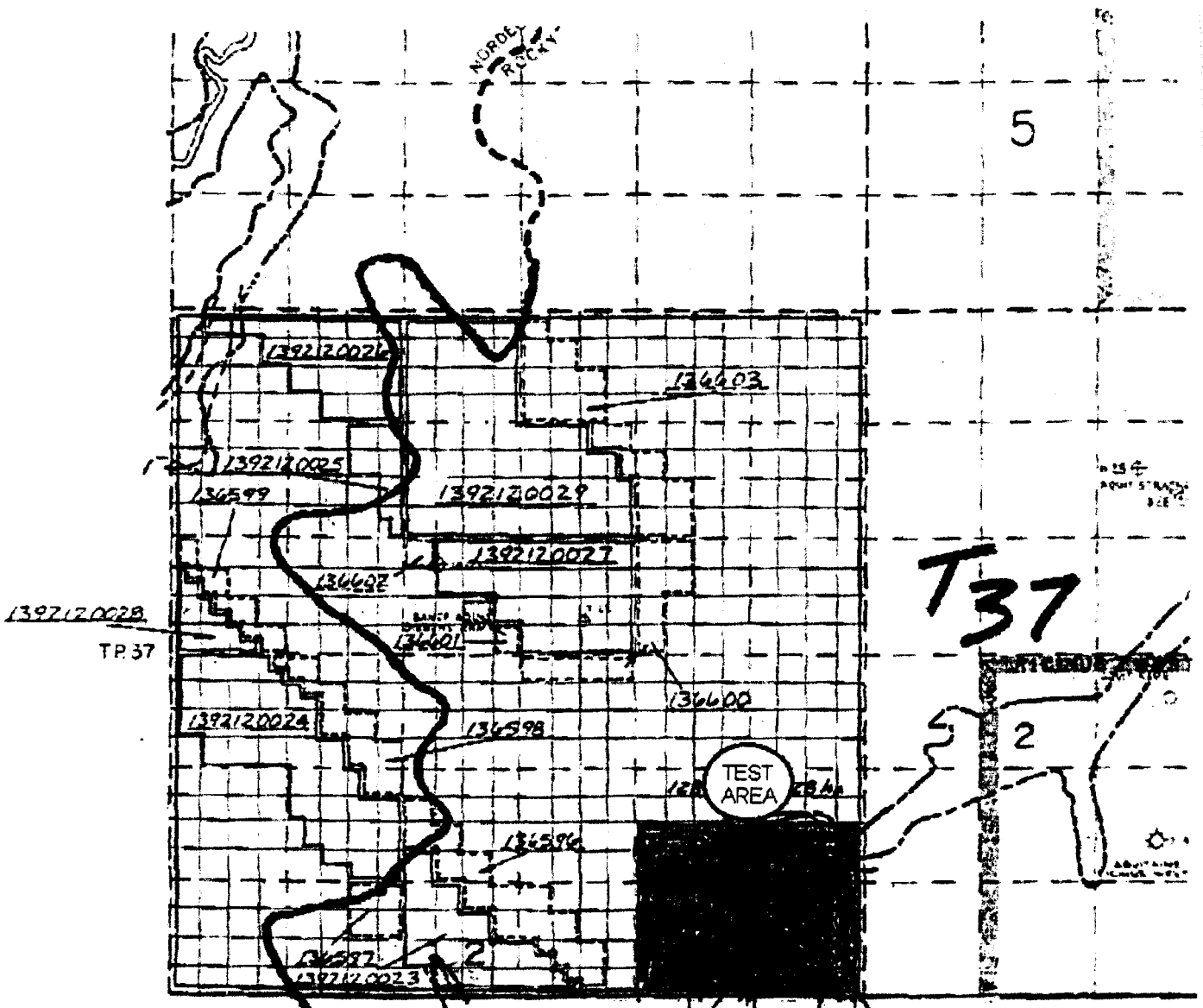
- Nov. 29, 1996 - Metallic and Industrial Minerals Permit No. 9396110054 obtained.
- May 8-14, 1997 - Grab samples taken and analyzed.
- June 24, 1997 - Exploration Permit No. 706 Issued.
- July 13-24, 1997 - Construct access to testing location.
- July 24-Aug 5, 1997 - Stage 1 test hole drilling and lab analyses.
- Aug 25-Sept 20, 1997 - Stage 2 test hole drilling and lab analyses.
- Sept 25-30, 1997 - Removal and restoration of access trail.

### **INTRODUCTION**

With good quality limestone deposits becoming more difficult to locate, Prairie Creek Quarries Ltd. went to the area S.W. of Rocky Mountain House as a potential source of raw material ( Fig. 1 ). A site was selected for study based on information derived from geological mapping information ( Fig. 2 ) and visual outcroppings at the site ( Fig. 3. ). This deposit is of particular interest due to its close proximity to an existing road system ( Secondary Highway 752 ) with reasonably level access to the site along existing cutlines and cutblocks.

Surface grab samples ( Fig. 5. ) were taken from the visible outcroppings for lab analyses. As results of these tests ( Fig. 6. ) indicated the presence of good quality limestone (Appendix "A" ) it was necessary to conduct a drilling program to define the extent of these reserves.

Fig. 1. TEST DRILLING LOCATION



R11WSM

- METALLIC & INDUSTRIAL MINERALS PERMIT APPL. NO. 96347
- TOTAL AREA 8448 ha
- GUARRIBLE MINERAL LEASE NO. 199210000Z
- COAL LEASE.
- - - APPL. COAL LEASE.
- ROCKY-NORTH SASKATCHEWAN INTEGRATED RESOURCE PLAN. (ZONE 2)
- - - NORDEGG-RED DEER RIVER INTEGRATED RESOURCE PLAN. (ZONE 2)
- BOUNDARY BETWEEN INTEGRATED RESOURCE PLANS.

DATE: 01/01/99

19990003

# PRAIRIE CREEK PROSPECT

## PRELIMINARY EXPLORATION

The Prairie Creek area was originally selected as a possible source of limestone from information obtained from geological survey maps. During a site visit it, it became obvious that the deposit contained at least two nearly vertical layers of limestone of undetermined quality.

Fig.2 Department of Mines and Resources  
TAY RIVER - Map 840A ( 1945 ).

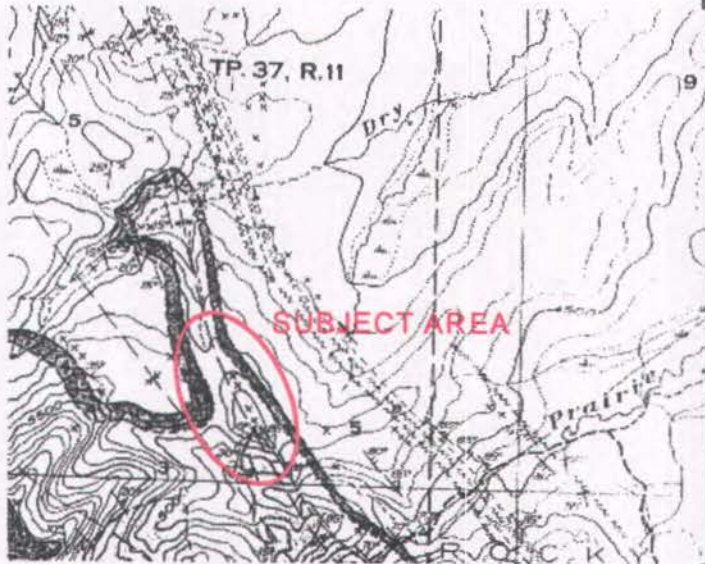
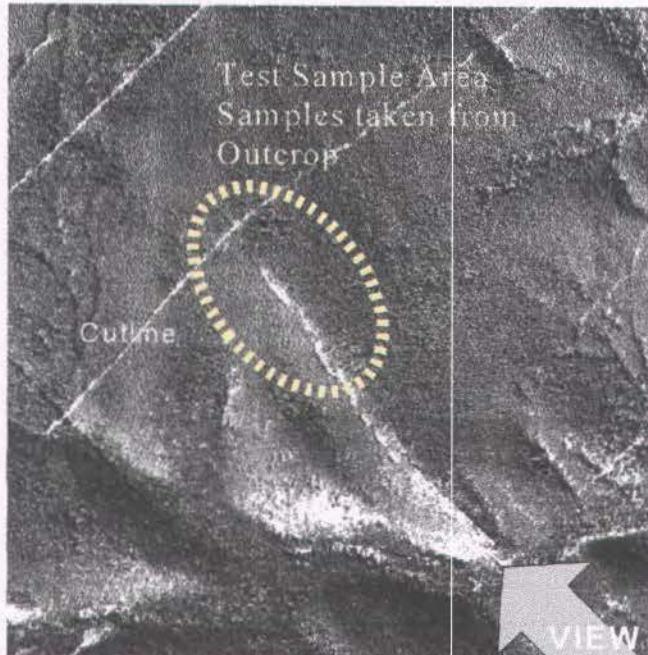


Fig. 3. Limestone Outcropping



The above photo shows the exposed limestone outcrop from the view indicated on the aerial photograph.

Grab samples were taken in May 1997 from these nearly vertical exposures over a length of approximately 450 meters.

Fig. 4. Aerial photo shows limestone outcrop

Fig. 5. GPS Locations for Grab Samples shown on aerial photo

Prairie Creek Prospect

GPS Locations

| Pt | Easting | Northing |
|----|---------|----------|
| 50 | 605898  | 5780722  |
| 52 | 605847  | 5780821  |
| 53 | 605842  | 5780832  |
| 54 | 605745  | 5780979  |
| 55 | 605714  | 5781112  |
| 57 | 605856  | 5780817  |

UTM Metric Grid

Grab samples obtained May 8, 1997.

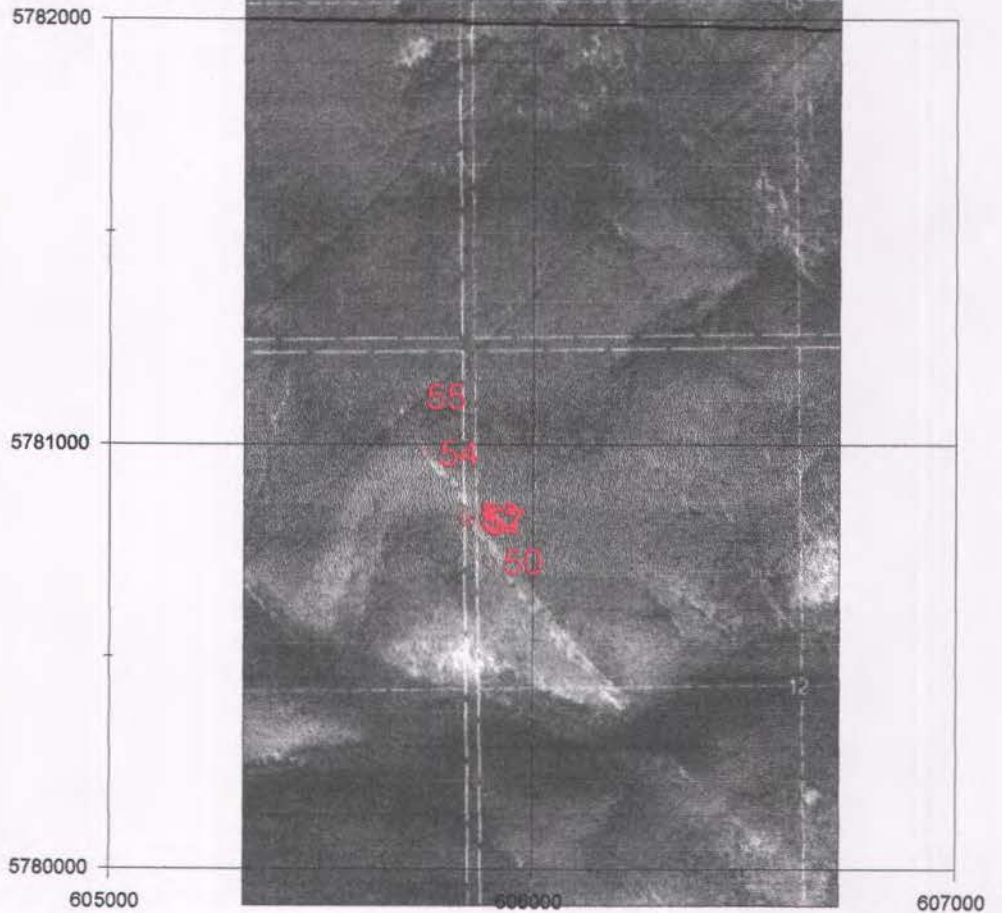


Table 1. Test Results

| SAMPLE # | CHEMICAL COMPOSITION<br>% OF SAMPLE BY WEIGHT |      |            |
|----------|---|------|------------|
|          | CaO   | MgO  | Acid Insol |
| 50       | 54.88   | 0.45 | 0.68       |
| 50 30m E | 54.74   | 0.48 | 0.76       |
| 52 base  | 55.07   | 0.40 | 0.50       |
| 52 top   | 46.79   | 7.29 | 0.78       |
| 53       | 44.47   | 9.18 | 0.92       |
| 54 top   | 51.28   | 3.38 | 0.66       |
| 54 25m E | 54.54   | 0.46 | 1.30       |
| 55       | 53.26   | 2.12 | 0.66       |
| 57       | 55.00   | 0.40 | 0.42       |

see Appendix "A"  
Certificate of Assay File No. 39099

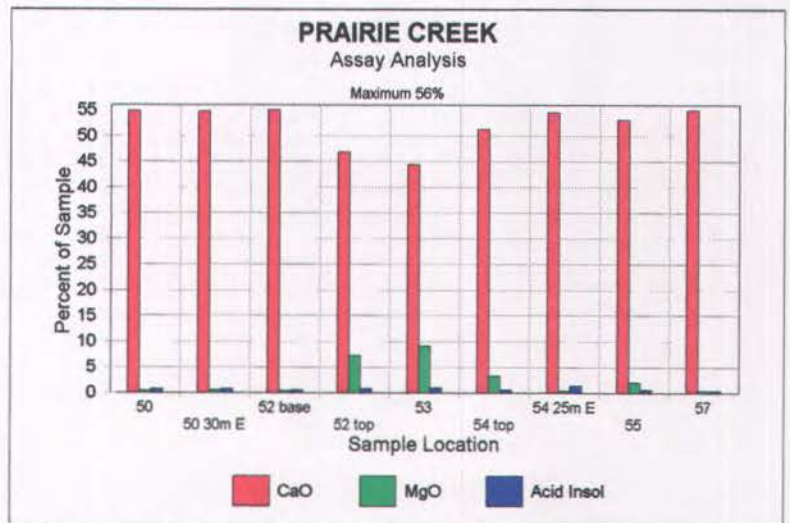


Fig. 6. Outcrop Sample Test Results

These samples we obtained from two limestone exposures running parallel to one another and separated by a distance of approximately 25-30 meters.

The chemical analyses obtained from these samples indicate a high calcium carbonate content.

(shown shaded in Table 1.)



## LOCATION AND ACCESS

Access to the proposed testing area involved utilization of an existing road used by **Sunpine Forest Products** thru a **Mutual Road Use Agreement** together with upgrading of existing cutlines to gain access to within approximately 700 meters of the drilling location as shown in Fig. 7.

It was then necessary to construct this 700 meters of temporary access to enable drilling of testholes along the limestone deposit to determine the extent and quality of this deposit.

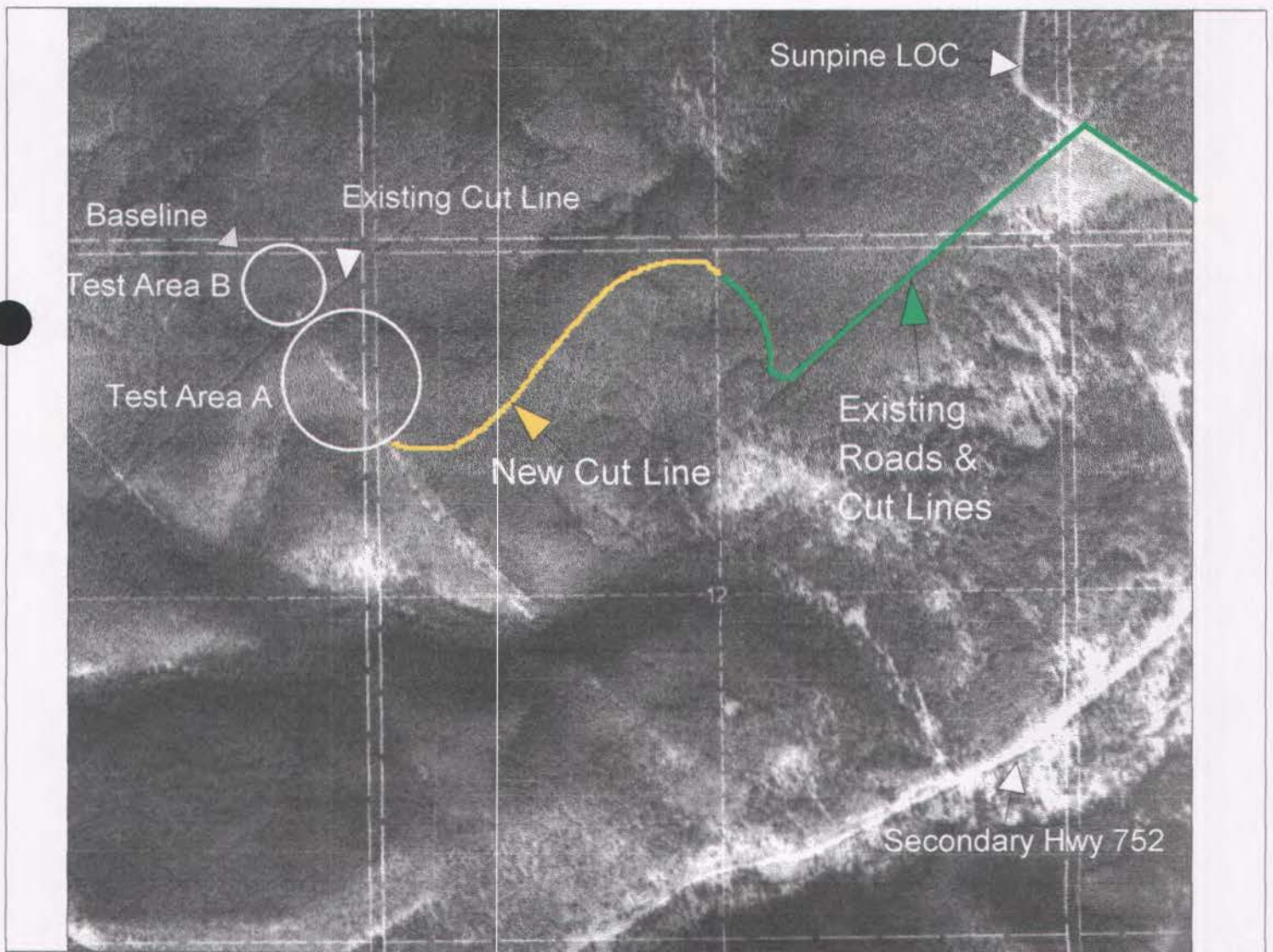


Fig. 7. Location and Access to Drilling

## **WORK PERFORMED**

Encouraged by the positive results from chemical testing of grab samples, **Exploration Licence No. 5181** was obtained along with **Permit to Operate Exploration Equipment No. 706** on June 11, 1997, to permit further investigation of the area.

Once access was established, drilling in the subject area began, and was divided into two stages.

**Stage 1** drilling was conducted in **Test Area A ( Fig. 7. )** and consisted of four 50' holes drilled at a 45 degree angle perpendicular to the direction of the visible outcropping. Three of the four testholes demonstrated the presence of high quality limestone in nearly vertical seams to at least the depth of holes drilled.

Some of the **costs** incurred during **Stage 1 drilling** are outline in the attached **Table 2.**

The **chemical analyses** for **Stage 1** testholes can be found in **Appendix "B"**.

In order to determine the extent of this high quality limestone deposit it was necessary to conduct additional drilling ( **Stage 2** ) in the areas north of the E-W cutline, **Test Area B ( Fig. 7. )** and additional drilling in **Test Area A ( Fig. 7 ).**

The testhole drilling in area B north of cutline consisted of a series of vertical holes. Several of these testholes indicated high quality limestone to considerable depth. However, a testhole adjacent to these locations often indicated to absence of good limestone, confirming the vertical nature of the deposit.

The testhole drilling in Area A south of this cutline consisted of a series of holes drilled at an angle of 52° showing not only the structure of limestone horizontally but providing information regarding the depth of the deposit.

Detailed locations of this **Stage 2 Drilling** are outlined in detail in **Fig. 8. and Fig. 9.**

The **costs** incurred in this additional **Stage 2 Drilling and Lab Testing** are shown in the following **Table 3.**

The results of this **chemical testing** are shown in **Appendix "C"**.

### **Certificate of Assay**

- File No. 39485
- File No. 39531
- File No. 39542
- File No. 39557

## ASSESSMENT WORK REPORT

METALLIC AND INDUSTRIAL MINERALS PERMIT NO. 9396110054

PRAIRIE CREEK PROSPECT

### STAGE 1 TESTING

#### TESTING ALONG CUTLINE & SOUTH OF CUTLINE

| DATE      | CONTRACTOR                    | INV No. | DESCRIPTION   | AMOUNT   | G.S.T. | TOTAL    |
|-----------|-------------------------------|---------|---|----------|--------|----------|
|           | Fish Creek Excavating Ltd     |         | Collect Grab Sample   |          |        |          |
| 14-May-97 | Loring Laboratories Ltd.      | 39099   | Sample 50 Thru 57   | 276.75   | 19.37  | 296.12   |
| 13-Jul-97 | Neyo Drilling & Blasting Ltd. | 321     | Clearing trees for access trail   | 2,600.00 | 182.00 | 2,782.00 |
| 16-Jul-97 | Speight Const. Co. Ltd.       | 17242   | Equipment rental D37P Komatsu<br>Build access trail                                     | 3,300.00 | 231.00 | 3,531.00 |
| 21-Jul-97 | Pidherney's Trucking          | 23624   | Move drill and compressor   | 1,050.00 | 73.50  | 1,123.50 |
| 24-Jul-97 | Neyo Drilling & Blasting Ltd. | 321     | Drilling Test Holes TH1A - TH4A   | 2,080.00 | 145.60 | 2,225.60 |
| 25-Jul-97 | Loring Laboratories Ltd.      | 39281   | Sample Assays<br>P.C. 117 to 125 and P.C. 1A - 7A<br>Grab Samples ( along E-W cutline ) | 430.50   | 30.14  | 460.64   |
| 05-Aug-97 | Loring Laboratories Ltd.      | 39326   | Sample Assay TH1A thru TH4A<br>Drill Hole Samples                                       | 1,187.50 | 83.13  | 1,270.63 |
| 29-Aug-97 | Loring Laboratories Ltd.      | 39448   | Sample Assays PC1a ,PC1b, PC1c<br>Grab Samples  | 184.50   | 12.92  | 197.42   |

STAGE 1 EXPENDITURES                      11,109.25      777.66      11,886.91

Table 2. - Costs Incurred Stage 1 Testing

## ASSESSMENT WORK REPORT

METALLIC AND INDUSTRIAL MINERALS PERMIT NO. 9396110054

PRAIRIE CREEK PROSPECT

### STAGE 2 TESTING

#### TESTING NORTH OF CUTLINE

| DATE      | CONTRACTOR                    | INV No. | DESCRIPTION                         | AMOUNT   | G.S.T. | TOTAL    |
|-----------|-------------------------------|---------|-------------------------------------|----------|--------|----------|
| 25-Aug-97 | Neyo Drilling & Blasting Ltd. | 321     | Clearing trees for access road      | 1,755.00 | 122.85 | 1,877.85 |
| 26-Aug-97 | Triple G Small Cat Services   | 2774    | Build access road for drilling      | 845.00   | 59.15  | 904.15   |
| 26-Aug-97 | Quinn Contracting Ltd.        | 98-5145 | Move compressor to Prairie Creek    | 682.50   | 47.78  | 730.28   |
| 27-Aug-97 | Neyo Drilling & Blasting Ltd. | 321     | Drill test holes A1 - A4 - A5       | 5,200.00 | 364.00 | 5,564.00 |
| 10-Sep-97 | Loring Laboratories Ltd.      | 39473   | Sample Assay TH A1                  | 193.50   | 13.55  | 207.05   |
| 19-Sep-97 | Loring Laboratories Ltd.      | 39485   | Sample Assay THA4 - THA5            | 430.50   | 30.14  | 460.64   |
| 06-Sep-97 | Neyo Drilling & Blasting Ltd. | 321     | Clearing trees for drill hole lines | 1,950.00 | 136.50 | 2,086.50 |
| 06-Sep-97 | Neyo Drilling & Blasting Ltd. | 321     | Drill test holes (Lines B,C,D)      | 2,420.00 | 169.40 | 2,589.40 |
| 12-Sep-97 |                               |         |                                     |          |        |          |

#### TESTING SOUTH OF CUTLINE

|           |                               |       |  |          |        |          |
|-----------|-------------------------------|-------|--|----------|--------|----------|
| 15-Sep-97 | Neyo Drilling & Blasting Ltd. | 321   | Drill test holes (Lines E,F,&G)              | 2,000.00 | 140.00 | 2,140.00 |
| 20-Sep-97 |                               |       |  |          |        |          |
| 23-Sep-97 | Loring Laboratories Ltd.      | 39531 | Sample Assays B4,B5,B6,B7,C2,C3<br>D1 and D3 | 645.75   | 45.20  | 690.95   |
| 24-Sep-97 | Loring Laboratories Ltd.      | 39542 | Sample Assays D2,D5,E1,E2,E3,E4              | 584.25   | 40.90  | 625.15   |
| 15-Oct-97 | Loring Laboratories Ltd.      | 39557 | Sample Assays F1,F2,F3<br>G1,G2,G3,G4        | 707.25   | 49.51  | 756.76   |
| 25-Sep-97 | ██████████                    | 475   | Resoration of Access Trail                   | 1,560.00 | 109.20 | 1,669.20 |
| 27-Sep-97 | Pidherney's Trucking          | 24133 | Move drill and compressor back to<br>Nordegg | 525.00   | 36.75  | 561.75   |

STAGE 2 EXPENDITURES

19,498.75    1,364.93    20,863.68

TOTAL EXPENDITURES FOR DRILLING AND TESTING

30,608.00    2,142.59    32,750.59

Table 3. - Stage 2 Costs - TOTAL EXPENDITURES

ASSESSMENT WORK REPORT

PRAIRIE CREEK PROSPECT

DRILL HOLE LOCATIONS  
TEST AREA A

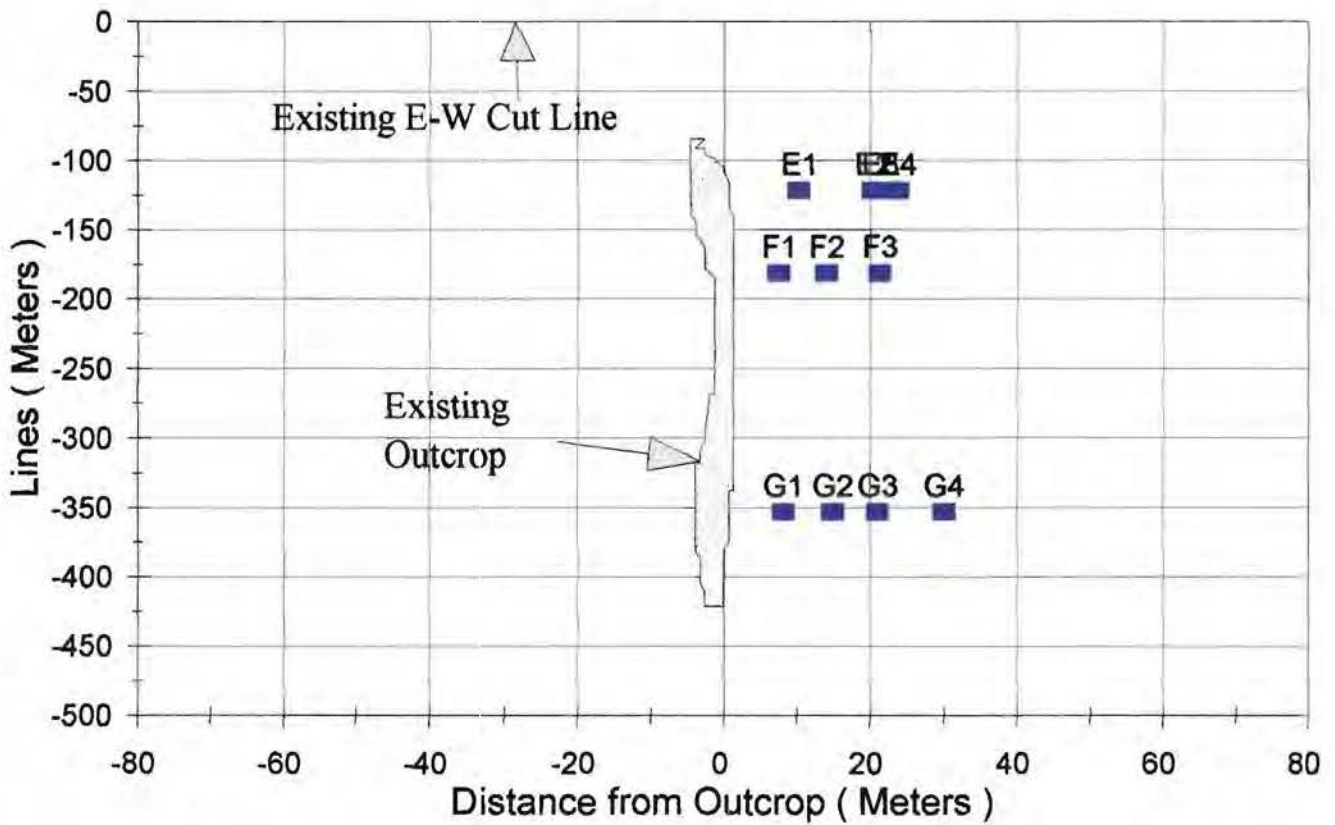


Fig. 8. Stage 2 Test Hole Drilling  
South of E-W Outline

ASSESSMENT WORK REPORT

PRAIRIE CREEK PROSPECT

DRILL HOLE LOCATIONS  
TEST AREA B

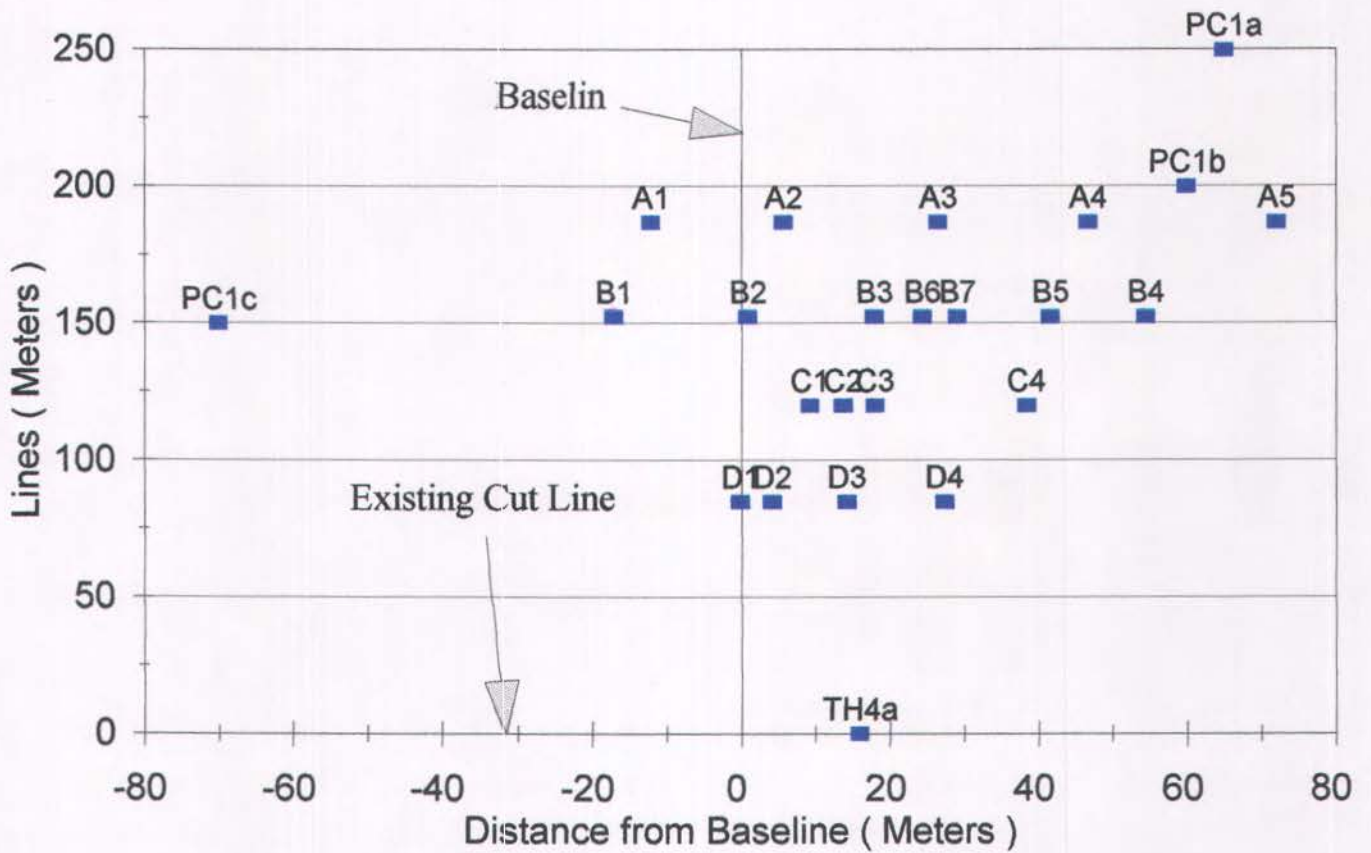


Fig. 9. Stage 2 Test Hole Drilling  
North of E-W Cutline

## CONCLUSION

The test drilling and subsequent lab analyses of samples obtained from the Prairie Creek Prospect have confirmed the presence of a high quality quarriable limestone deposit in a portion of our permit area ( TWP 37, RGE 11, W5M ).

Testhole results indicate the presence of two and possibly three nearly vertical beds of good quality limestone varying in width from 6 - 7 meters. In several testholes good limestone was still encountered even at the full extent of drilling. The interpreted results of these drill holes are shown in the following Fig. 10. (Line E), Fig. 11. (Line F), and Fig. 12. (Line G).

The **quarriable reserves** of good quality limestone based on the results obtained from drilling and testing are estimated at between **450,000 to 850,000 tonnes** in the area tested. This quantity could be substantially higher, as it is reasonable to assume these deposits are continuous in a N-S direction, into areas not yet tested.

Fig. 10. TESTHOLE DATA ( LINE E )

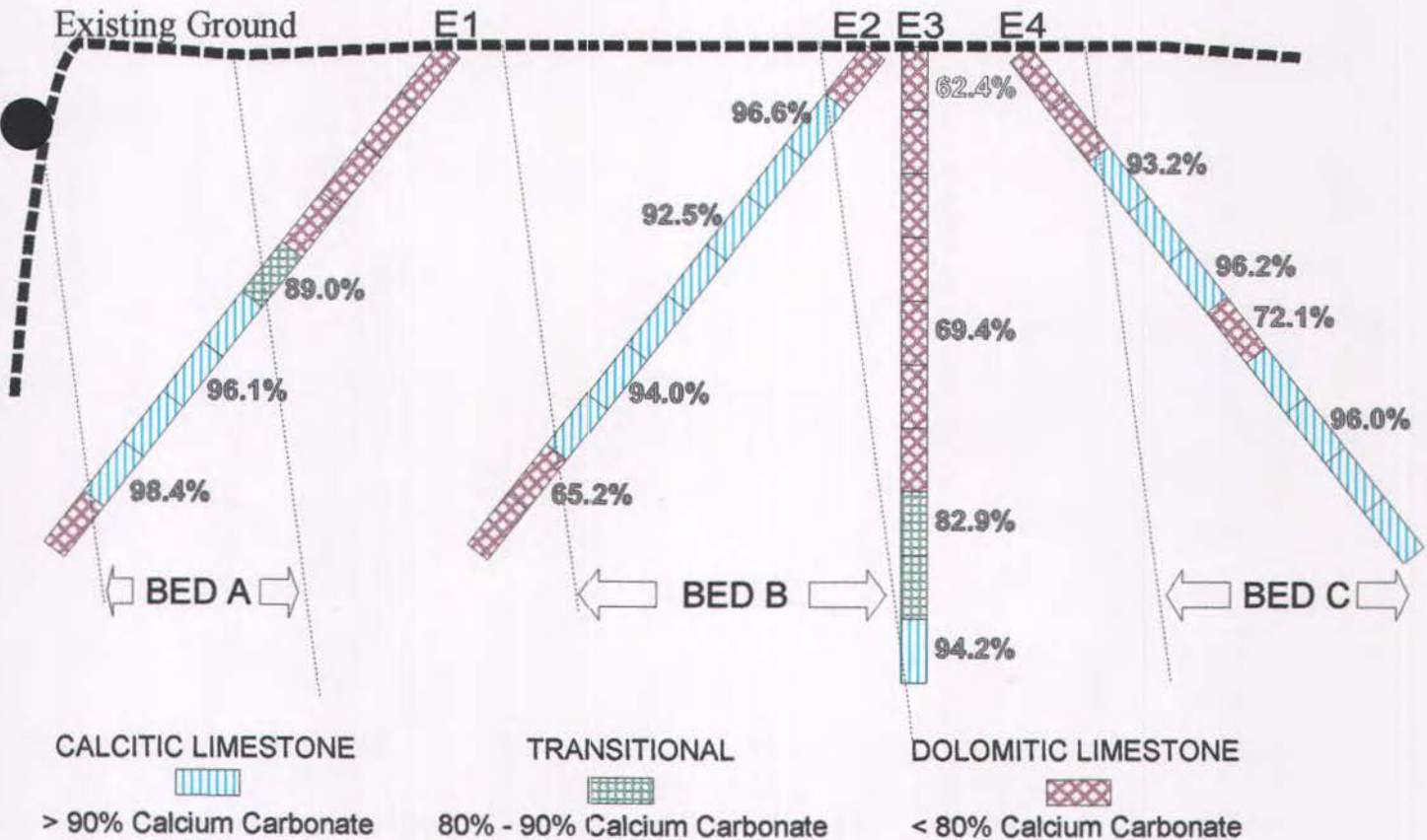


Fig. 11. TESTHOLE DATA ( LINE F )

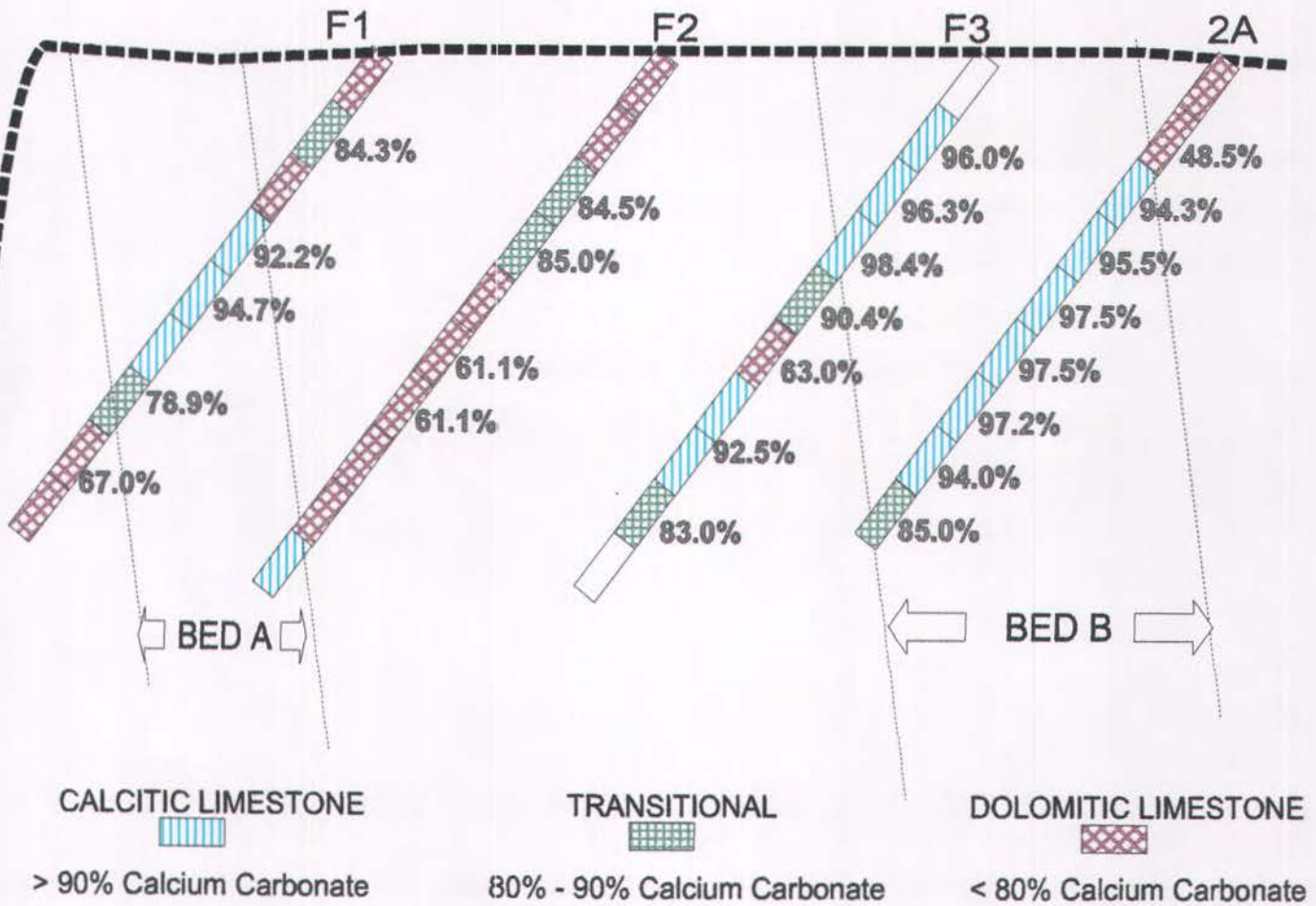
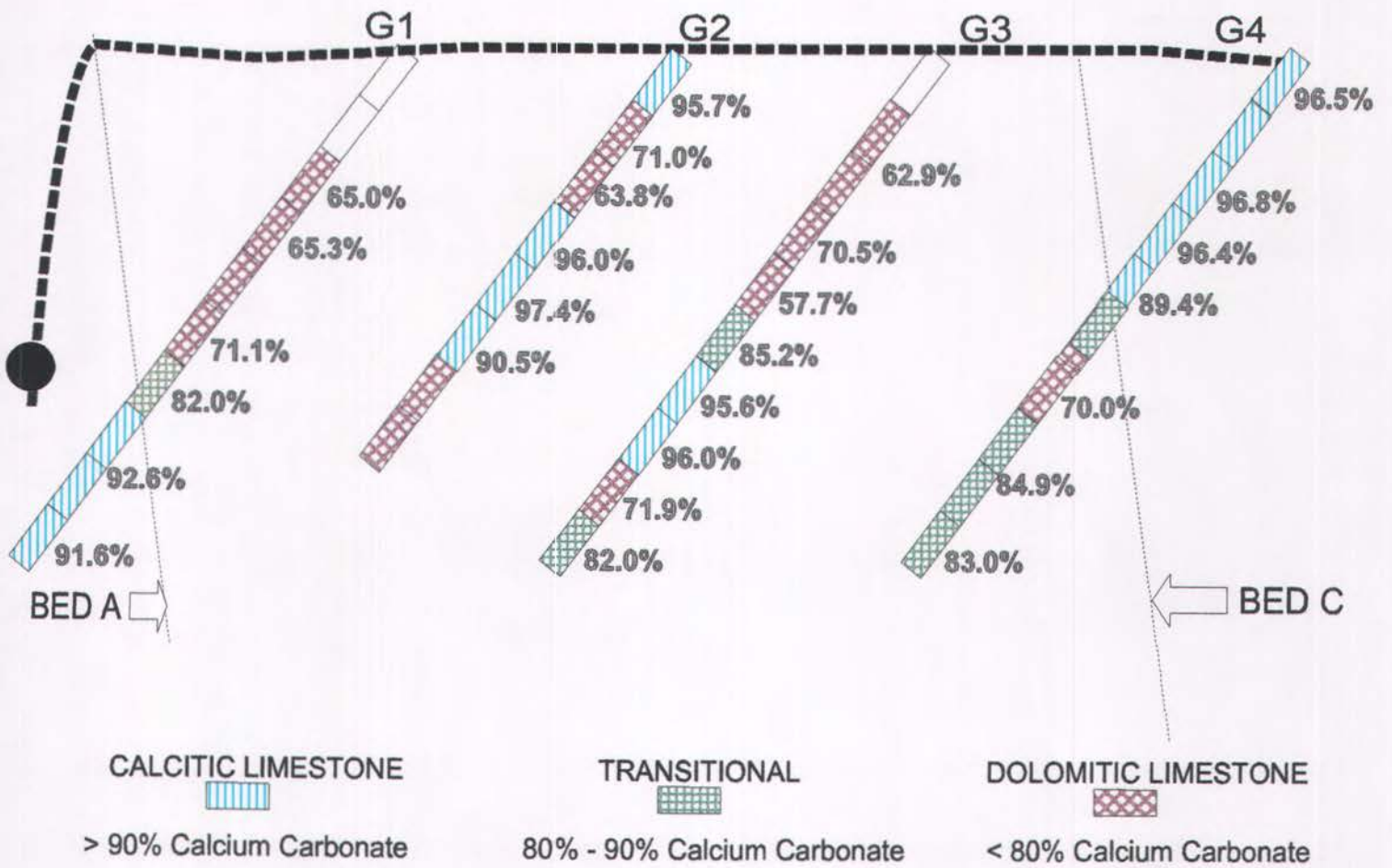
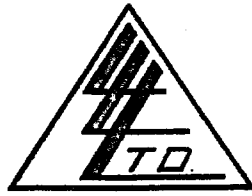




Fig. 12. TESTHOLE DATA (LINE G)





**Certificate of Assay**  
**Loring Laboratories Ltd.**

629 Beaverdam Road, NE Calgary Alberta  
 Tel: (403)274-2777 Fax: (403)275-0541

To : **NORDEGG LIME LTD.**  
 5007 - 28th Street S.E.  
 Calgary, Alberta  
 T2B 3B4  
 ATTN : Don Scheurman

File No : **39099**  
 Date : May 14, 1997  
 Samples : Lime  
 Project :  
 P.O.#

| Sample No.                     | CaO<br>% | MgO<br>% | Acid<br>Insolubles<br>% |
|--------------------------------|----------|----------|-------------------------|
| <b><u>"Assay Analysis"</u></b> |          |          |                         |
| # 50                           | 54.88    | 0.45     | 0.68                    |
| # 50 30m East                  | 54.74    | 0.48     | 0.76                    |
| # 52 Base                      | 55.07    | 0.40     | 0.50                    |
| # 52 Top                       | 46.79    | 7.29     | 0.78                    |
| # 53                           | 44.47    | 9.18     | 0.92                    |
| # 54 Top                       | 51.28    | 3.38     | 0.66                    |
| # 54 25m Est                   | 54.54    | 0.46     | 1.30                    |
| # 55                           | 53.26    | 2.12     | 0.66                    |
| # 57                           | 55.00    | 0.40     | 0.42                    |

I HEREBY CERTIFY that the above results are those assays made by me upon the herein described samples :

Assayer

To : Nordegg Lime  
 5007 - 28th Street S.E.  
 Calgary, Alta  
 T2B 3B4  
 ATTN : Don Scheurman



File No : 3 9 3 2 6  
 Date : 8/5/97  
 Samples : 38 Lime Stone  
 Project : Prairie Creek  
 P.O.#

## Certificate of Assay

### Loring Laboratories Ltd.

629 Beaverdam Road, NE Calgary Alberta

Tel: (403)274-2777 Fax: (403)275-0541

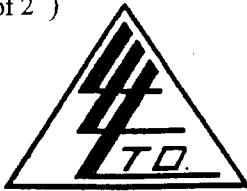
| Sample No.    | CaO<br>% | MgO<br>% | Acid<br>Insolubles |
|---------------|----------|----------|--------------------|
| TH1A - 8'     | 54.16    | 0.58     | 1.36               |
| TH1A - 10-12' | 54.88    | 0.50     | 0.36               |
| TH1A - 18'    | 54.66    | 0.43     | 0.82               |
| TH1A - 22'    | 54.07    | 1.21     | 0.62               |
| TH1A - 27'    | 54.25    | 1.11     | 0.56               |
| TH1A - 30-32' | 48.40    | 3.83     | 5.40               |
| TH1A - 38'    | 34.00    | 15.25    | 6.38               |
| TH1A - 42'    | 42.56    | 9.67     | 3.02               |
| TH1A - 44-45' | 49.00    | 3.65     | 4.32               |
| TH1A - 49'    | 47.60    | 2.85     | 8.38               |
| TH1A - 53-54' | 52.92    | 1.87     | 1.42               |
| TH1A - 60'    | 44.80    | 8.97     | 0.94               |
| TH1A - 66'    | 41.44    | 4.54     | 1.52               |
| TH2A - 8'     | 27.16    | 2.65     | 45.4               |
| TH2A - 12'    | 52.80    | 1.28     | 2.90               |
| TH2A - 18'    | 53.48    | 0.76     | 2.46               |
| TH2A - 23'    | 54.60    | 0.58     | 0.82               |
| TH2A - 27-28' | 54.60    | 0.56     | 0.70               |
| TH2A - 30'    | 54.42    | 0.78     | 0.76               |
| TH2A - 32-34' | 54.32    | 0.63     | 1.38               |
| TH2A - 35-36' | 52.64    | 1.16     | 3.42               |
| TH2A - 40-41  | 47.00    | 5.42     | 3.42               |
| TH4A - 8'     | 42.28    | 9.80     | 3.10               |
| TH4A - 16'    | 52.08    | 2.14     | 2.40               |
| TH4A - 11-12' | 52.92    | 1.86     | 1.00               |
| TH4A - 19-20' | 53.09    | 1.90     | 0.88               |
| TH4A - 23'    | 51.02    | 3.13     | 0.88               |
| TH4A - 30'    | 49.34    | 4.43     | 1.90               |
| TH4A - 34'    | 36.68    | 15.42    | 1.80               |

I HEREBY CERTIFY that the above results are those assays  
 made by me upon the herein described samples :

\_\_\_\_\_  
 Assayer

Rejects and pulps are retained for one month unless specific arrangements are made in advance.

To: **Nordegg Lime**  
 5007 - 28th Street S.E.  
 Calgary, Alta  
 T2B 3B4  
 ATN: Don Scheurman



File No : 3 9 3 2 6  
 Date : 8/5/97  
 Samples : 38 Lime Stone  
 Project : Prairie Creek  
 P.O.#

## Certificate of Assay

### Loring Laboratories Ltd.

629 Beaverdam Road, NE Calgary Alberta  
 Tel: (403)274-2777 Fax: (403)275-0541

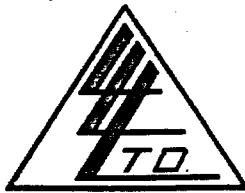
| Sample No.       | CaO<br>% | MgO<br>% | Acid<br>Insolubles |
|------------------|----------|----------|--------------------|
| TH4A - 40'       | 47.32    | 6.55     | 1.50               |
| TH4A - 43-44'    | 40.88    | 12.37    | 0.94               |
| TH4A - 46'       | 36.68    | 15.90    | 0.72               |
| TH4A - 48'       | 39.20    | 13.78    | 0.84               |
| TH4A - 50'       | 41.44    | 11.97    | 0.62               |
| TH4A - 53'       | 45.50    | 8.55     | 0.58               |
| Outcrop#5 Top    | 54.10    | 1.28     | 0.32               |
| Outcrop#5 Middle | 55.21    | 0.43     | 0.22               |
| Outcrop#5 Base   | 55.16    | 0.36     | 0.42               |

I HEREBY CERTIFY that the above results are those assays made by me upon the herein described samples :

\_\_\_\_\_  
 Assayer

Rejects and pulps are retained for one month unless specific arrangements are made in advance.

To: **NORDEGG LIME LTD.**  
 5007 - 28th Street S.E.  
 Calgary, Alberta  
 T2B 3B4  
 RTN: Don Scheurman



File No : **39485**  
 Date : September 19, 1997  
 Samples : Limestone  
 Project :  
 P.O.#

## Certificate of Assay

### Loring Laboratories Ltd.

629 Beaverdam Road, NE Calgary Alberta  
 Tel: (403)274-2777 Fax: (403)275-0541

| Sample No.                     | CaO<br>% | MgO<br>% | Acid<br>Insolubles<br>% |
|--------------------------------|----------|----------|-------------------------|
| <b><u>"Assay Analysis"</u></b> |          |          |                         |
| <b><u>PC 09-02</u></b>         |          |          |                         |
| <b><u>A 4</u></b>              |          |          |                         |
| 2-6'                           | 54.60    | 0.71     | 0.58                    |
| 8-11'                          | 54.94    | 0.35     | 0.38                    |
| 13-17'                         | 55.16    | 0.36     | 0.28                    |
| 18-21'                         | 54.30    | 0.63     | 1.36                    |
| 23-27'                         | 54.32    | 0.88     | 0.40                    |
| <b>28-31' A</b>                | 52.40    | 2.64     | 0.40                    |
| 28-31' B                       | 52.24    | 2.72     | 0.36                    |
| 33-37'                         | 54.88    | 0.45     | 0.36                    |
| 38-41'                         | 54.72    | 0.63     | 0.26                    |
| 43-47'                         | 54.76    | 0.53     | 0.40                    |
| 48-51'                         | 45.00    | 9.05     | 0.36                    |
| 53-57'                         | 53.50    | 1.76     | 0.46                    |
| <b><u>A 5</u></b>              |          |          |                         |
| 18-21'                         | 54.45    | 0.61     | 0.96                    |
| 27-30'                         | 43.56    | 9.91     | 0.96                    |

I HEREBY CERTIFY that the above results are those assays made by me upon the herein described samples :

  
 Assayer

Rejects and pulps are retained for one month unless specific arrangements are made in advance.

To: **NORDEGG LIME LTD.**  
 5007 - 28th Street S.E.  
 Calgary, Alberta  
 T2B 3B4  
 ATTN: Don Scheurman



File No : **3 9 5 3 1**  
 Date : September 23, 1997  
 Samples :  
 Project :  
 P.O.#

**Certificate of Assay**  
**Loring Laboratories Ltd.**

629 Beaverdam Road, NE Calgary Alberta  
 Tel: (403)274-2777 Fax: (403)275-0541

| Sample No.                     | CaO<br>% | MgO<br>% | Acid<br>Insolubles<br>% |
|--------------------------------|----------|----------|-------------------------|
| <b><u>"Assay Analysis"</u></b> |          |          |                         |
| <b><u>SEPT. 2</u></b>          |          |          |                         |
| P.C. - A4 - 50'                | 45.00    | 8.95     | 0.46                    |
| <b><u>SEPT. 8</u></b>          |          |          |                         |
| B4 - 24-30'                    | 54.66    | 0.63     | 0.46                    |
| B5 - 10-15'                    | 52.98    | 1.58     | 1.62                    |
| B5 - 20-25'                    | 54.84    | 0.56     | 0.40                    |
| B5 - 41-45'                    | 54.20    | 0.80     | 0.78                    |
| B6 - 10-15'                    | 54.54    | 0.76     | 0.68                    |
| B7 - 10-15'                    | 51.96    | 2.72     | 1.10                    |
| B7 - 25-30'                    | 54.12    | 1.13     | 0.50                    |
| <b><u>SEPT. 9</u></b>          |          |          |                         |
| C2 - 16-20'                    | 53.20    | 1.48     | 0.96                    |
| C2 - 26-30'                    | 54.32    | 0.78     | 0.96                    |
| C2 - 36-40'                    | 54.82    | 0.41     | 0.60                    |
| C3 - 1-5'                      | 54.30    | 0.66     | 0.94                    |
| C3 - 16-20'                    | 51.10    | 3.75     | 0.40                    |
| C3 - 31-35'                    | 52.92    | 2.12     | 0.60                    |
| C3 - 45-50'                    | 54.66    | 0.68     | 0.40                    |
| D1 - 5-10'                     | 53.76    | 1.34     | 1.04                    |
| D1 - 16-20'                    | 54.82    | 0.53     | 0.52                    |
| D1 - 26-30'                    | 54.88    | 0.50     | 0.46                    |

I HEREBY CERTIFY that the above results are those assays made by me upon the herein described samples :

[Redacted Signature] / Assayer /

Rejects and pulps are retained for one month unless specific arrangements are made in advance.

To: NORDEGG LIME LTD.  
 5007 - 28th Street S.E.  
 Calgary, Alberta  
 T2B 3B4  
 ATTN: Don Scheurman




File No : 39531  
 Date : September 23, 1997  
 Samples :  
 Project :  
 P.O.#

## Certificate of Assay Loring Laboratories Ltd.

629 Beaverdam Road, NE Calgary Alberta  
 Tel: (403)274-2777 Fax: (403)275-0541

| Sample No.      | CaO<br>% | MgO<br>% | Acid<br>Insolubles<br>% |
|-----------------|----------|----------|-------------------------|
| <u>SEPT. 12</u> |          |          |                         |
| D3 - 16-20'     | 53.76    | 1.48     | 0.62                    |
| D3 - 31-35'     | 54.50    | 0.50     | 0.40                    |
| D3 - 46-50'     | 52.04    | 2.85     | 0.46                    |

I HEREBY CERTIFY that the above results are those assays made by me upon the herein described samples :

  
 Assayer

Rejects and pulps are retained for one month unless specific arrangements are made in advance.

To: NORDEGG LIME LTD.  
 5007 - 28th Street S.E.  
 Calgary, Alberta  
 T2B 3B4  
 ATTN: Don Scheurman



File No : 39542  
 Date : September 24, 1997  
 Samples :  
 Project :  
 P.O.#

## Certificate of Assay

### Loring Laboratories Ltd.

629 Beaverdam Road, NE Calgary Alberta  
 Tel: (403)274-2777 Fax: (403)275-0541

| Sample No.                     | CaO<br>% | MgO<br>% | Acid<br>Insolubles<br>% |
|--------------------------------|----------|----------|-------------------------|
| <b><u>"Assay Analysis"</u></b> |          |          |                         |
| <b><u>"PRAIRIE CREEK"</u></b>  |          |          |                         |
| D2 - 6-10'                     | 54.32    | 1.02     | 0.6                     |
| D5 - 21-25'                    | 53.44    | 2.12     | 0.54                    |
| D5 - 31-35'                    | 52.64    | 2.19     | 0.58                    |
| D5 - 46-50'                    | 53.76    | 1.62     | 0.58                    |
| E1 - 21-25'                    | 49.84    | 4.56     | 0.68                    |
| E1 - 31-35'                    | 53.82    | 1.31     | 0.44                    |
| E1 - 41-45'                    | 55.12    | 0.70     | 0.50                    |
| E2 - 6-10'                     | 54.12    | 1.01     | 0.70                    |
| E2 - 16-20'                    | 51.78    | 2.98     | 0.52                    |
| E2 - 31-35'                    | 52.64    | 2.25     | 0.40                    |
| E2 - 41-45'                    | 36.50    | 14.77    | 2.70                    |
| E3 - 1-5'                      | 34.96    | 14.99    | 5.62                    |
| E3 - 21-25'                    | 33.80    | 13.76    | 1.18                    |
| E3 - 36-40'                    | 46.44    | 7.13     | 1.00                    |
| E3 - 46-50'                    | 52.75    | 1.58     | 1.74                    |
| E4 - 11-15'                    | 52.19    | 2.52     | 0.72                    |
| E4 - 21-25'                    | 53.86    | 1.38     | 0.34                    |
| E4 - 26-30'                    | 40.40    | 5.60     | 15.36                   |
| E4 - 35-38'                    | 53.76    | 1.13     | 0.90                    |

I HEREBY CERTIFY that the above results are those assays made by me upon the described samples :

[Redacted Signature]

Assayer

Rejects and pulps are retained for one month unless specific arrangements are made in advance.



To: NORDEGG LIME LTD.  
5007 - 28th Street S.E.  
Calgary, Alberta  
T2B 3B4

TN: Don Scheurman



File No : 39557  
Date : October 15, 1997  
Samples :  
Project :  
P.O.#

## Certificate of Assay


### Loring Laboratories Ltd.

629 Beaverdam Road, NE Calgary Alberta

Tel: (403)274-2777 Fax: (403)275-0541

| Sample No.             | CaO<br>% | MgO<br>% | Acid<br>Insolubles<br>% |
|------------------------|----------|----------|-------------------------|
| <b>"PRAIRIE CREEK"</b> |          |          |                         |
| F 1 - 5-10'            | 47.18    | 6.48     | 1.14                    |
| F 1 - 21-25'           | 53.02    | 2.13     | 0.46                    |
| F 1 - 36-40'           | 37.52    | 13.84    | 3.24                    |
| F 2 - 15-20'           | 47.61    | 6.47     | 1.00                    |
| F 2 - 26-30'           | 34.23    | 17.01    | 2.56                    |
| F 3 - 5-10'            | 53.78    | 0.91     | 1.74                    |
| F 3 - 21-25'           | 50.62    | 1.56     | 5.72                    |
| F 3 - 26-30'           | 35.28    | 12.24    | 10.58                   |
| F 3 - 41-45'           | 46.50    | 6.43     | 2.60                    |
| G 1 - 11-15'           | 36.40    | 15.34    | 2.24                    |
| G 1 - 26-30'           | 39.82    | 13.10    | 0.96                    |
| G 1 - 31-35'           | 45.92    | 7.99     | 0.80                    |
| G 1 - 46-50'           | 51.52    | 2.82     | 0.56                    |
| G 2 - 1-5'             | 53.59    | 1.14     | 1.32                    |
| G 2 - 6-10'            | 39.76    | 11.74    | 3.94                    |
| G 2 - 11-15'           | 35.73    | 15.72    | 2.56                    |
| G 2 - 16-20'           | 53.76    | 1.23     | 1.02                    |
| G 2 - 26-30'           | 50.68    | 3.92     | 0.70                    |
| G 2 - 36-40'           | 33.04    | 18.24    | 2.02                    |
| G 3 - 17-22'           | 39.48    | 12.87    | 1.60                    |
| G 3 - 27-31'           | 47.71    | 6.05     | 1.34                    |
| G 3 - 37-41'           | 53.76    | 1.26     | 1.16                    |
| G 3 - 46-50'           | 45.92    | 7.13     | 2.28                    |
| G 3 - 47-51'           | 37.63    | 14.09    | 2.28                    |

I HEREBY CERTIFY that the above results are those assays made by me upon the herein described samples :

  
Assayer

Rejects and pulps are retained for one month unless specific arrangements are made in advance.

To: NORDEGG LIME LTD.  
 5007 - 28th Street S.E.  
 Calgary, Alberta  
 T2B 3B4  
 Attn: Don Scheurman



File No : 39557  
 Date : October 15, 1997  
 Samples :  
 Project :  
 P.O.#

## Certificate of Assay

### Loring Laboratories Ltd.

629 Beaverdam Road, NE Calgary Alberta  
 Tel: (403)274-2777 Fax: (403)275-0541

| Sample No    | CaO<br>% | MgO<br>% | Acid<br>Insolubles<br>% |
|--------------|----------|----------|-------------------------|
| G 4 - 11-15' | 54.21    | 0.76     | 1.20                    |
| G 4 - 21-25' | 50.06    | 3.48     | 2.64                    |
| G 4 - 31-35' | 39.20    | 11.52    | 5.36                    |
| G 4 - 46-50' | 46.48    | 6.38     | 2.52                    |

I HEREBY CERTIFY that the above results are those assays made by me upon the herein described samples :

Assayer

Rejects and pulps are retained for one month unless specific arrangements are made in advance