

MAR 19770033: WHITECOURT EAST

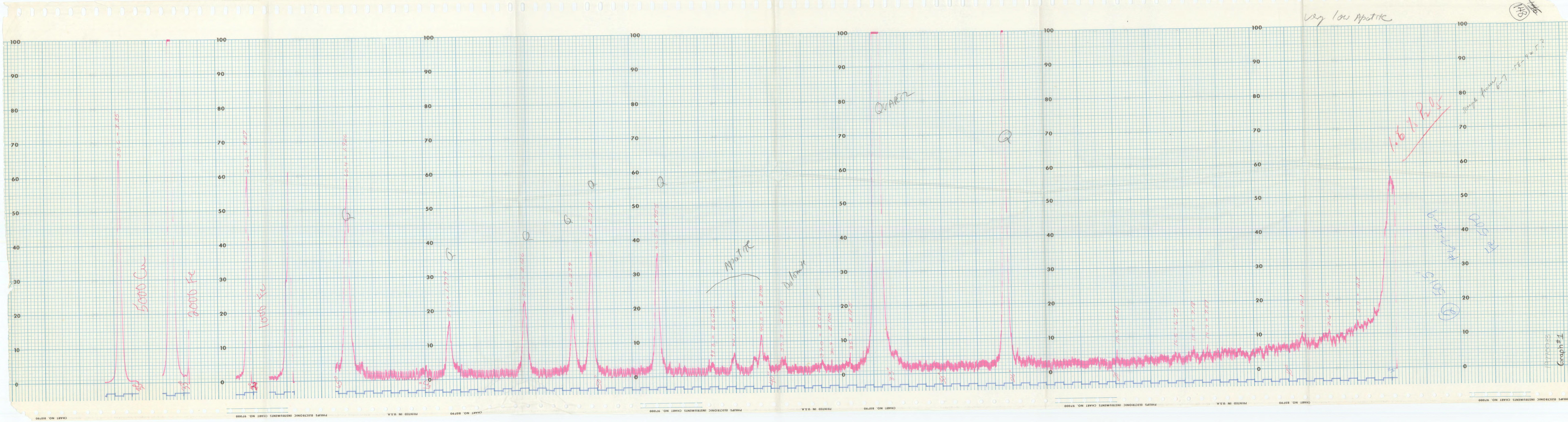
Received date: Dec 31, 1977

Public release date: Jan 01, 1979

DISCLAIMER

By accessing and using the Alberta Energy website to download or otherwise obtain a scanned mineral assessment report, you ("User") agree to be bound by the following terms and conditions:

- a) Each scanned mineral assessment report that is downloaded or otherwise obtained from Alberta Energy is provided "AS IS", with no warranties or representations of any kind whatsoever from Her Majesty the Queen in Right of Alberta, as represented by the Minister of Energy ("Minister"), expressed or implied, including, but not limited to, no warranties or other representations from the Minister, regarding the content, accuracy, reliability, use or results from the use of or the integrity, completeness, quality or legibility of each such scanned mineral assessment report;
- b) To the fullest extent permitted by applicable laws, the Minister hereby expressly disclaims, and is released from, liability and responsibility for all warranties and conditions, expressed or implied, in relation to each scanned mineral assessment report shown or displayed on the Alberta Energy website including but not limited to warranties as to the satisfactory quality of or the fitness of the scanned mineral assessment report for a particular purpose and warranties as to the non-infringement or other non-violation of the proprietary rights held by any third party in respect of the scanned mineral assessment report;
- c) To the fullest extent permitted by applicable law, the Minister, and the Minister's employees and agents, exclude and disclaim liability to the User for losses and damages of whatsoever nature and howsoever arising including, without limitation, any direct, indirect, special, consequential, punitive or incidental damages, loss of use, loss of data, loss caused by a virus, loss of income or profit, claims of third parties, even if Alberta Energy have been advised of the possibility of such damages or losses, arising out of or in connection with the use of the Alberta Energy website, including the accessing or downloading of the scanned mineral assessment report and the use for any purpose of the scanned mineral assessment report so downloaded or retrieved.
- d) User agrees to indemnify and hold harmless the Minister, and the Minister's employees and agents against and from any and all third party claims, losses, liabilities, demands, actions or proceedings related to the downloading, distribution, transmissions, storage, redistribution, reproduction or exploitation of each scanned mineral assessment report obtained by the User from Alberta Energy.

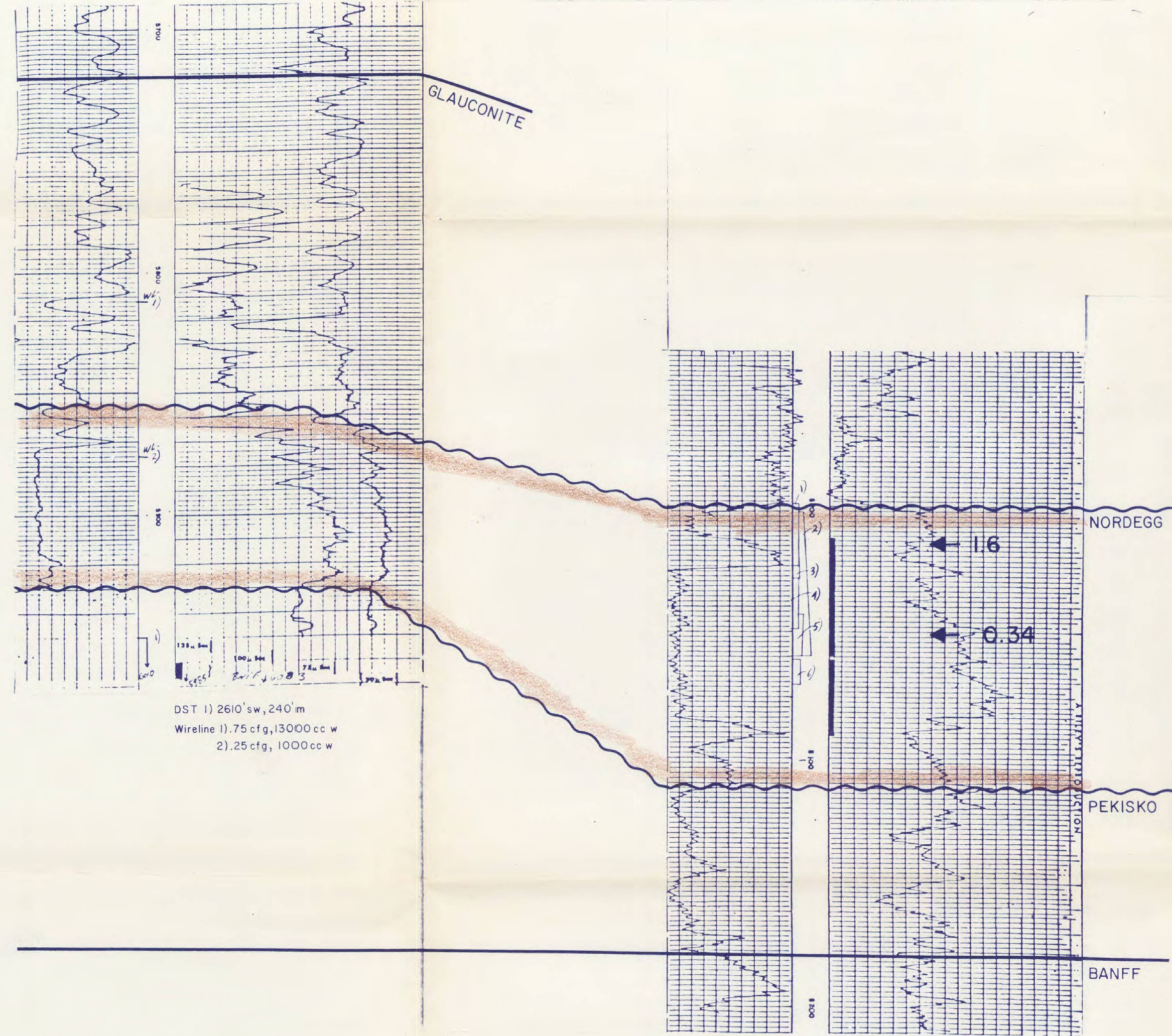


2-16-57-11w5
KB 2797

6-7-58-9w5
KB 2437

1/1963

MISS
4/1954

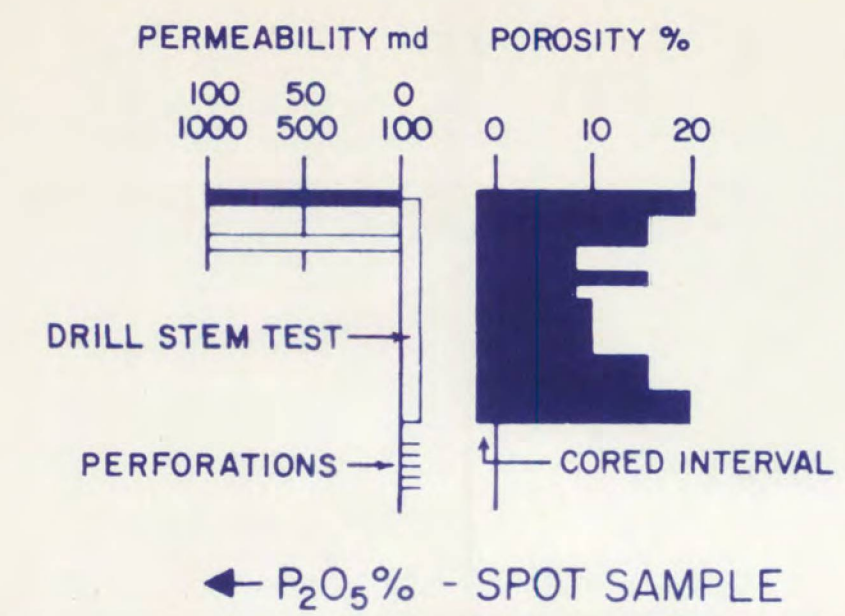
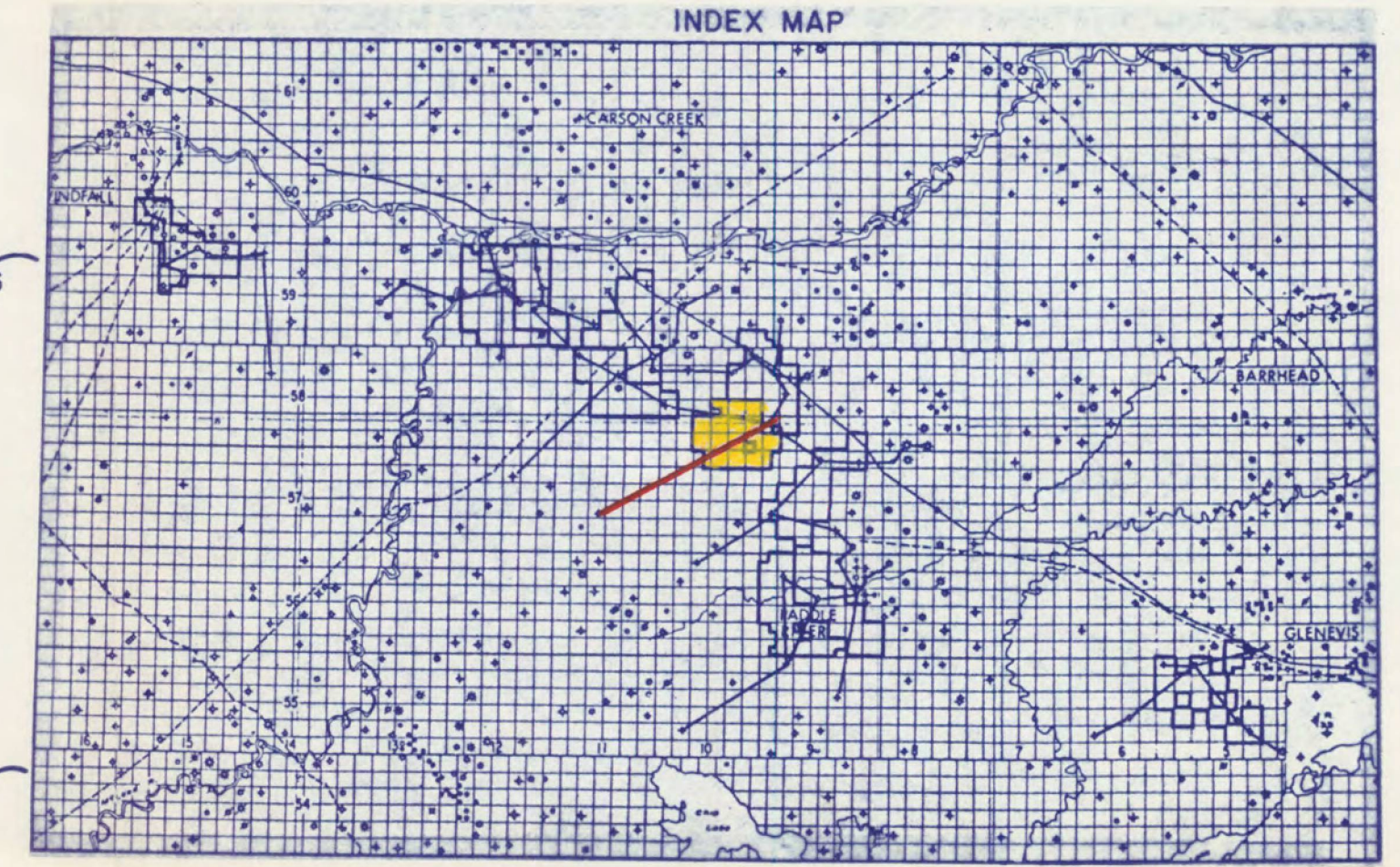


DST 1) 2610' sw, 240' m
Wireline 1). 75 cfg, 13000 cc w
2). 25 cfg, 1000 cc w

DST 1) 240' oil, 50' ocm
2) 290' ocm
3) 15' ocm
4) mud
5) 38' m
6) 3220' sul sw

← P₂O₅%

QUARTZ MINERAL EXPLORATION PERMIT NO. 6876080001
GREENCOURT S.
NORDEGG PHOSPHORITE
STRATIGRAPHIC CROSS SECTION 0-0'
Vert. Scale: 1" = 40'
Datum - Top Banff
Enclosure 3
J.R. CENTURY PETROLEUM CONSULTANTS LTD. DEC. 1976



11-18-58-10w5
KB 2775

9/1974

6-7-58-9w5
KB 2437

MISS
4/1954

6-34-57-9w5
KB 2443

9/1961

QUARTZ MINERAL EXPLORATION PERMIT NO. 6876080001

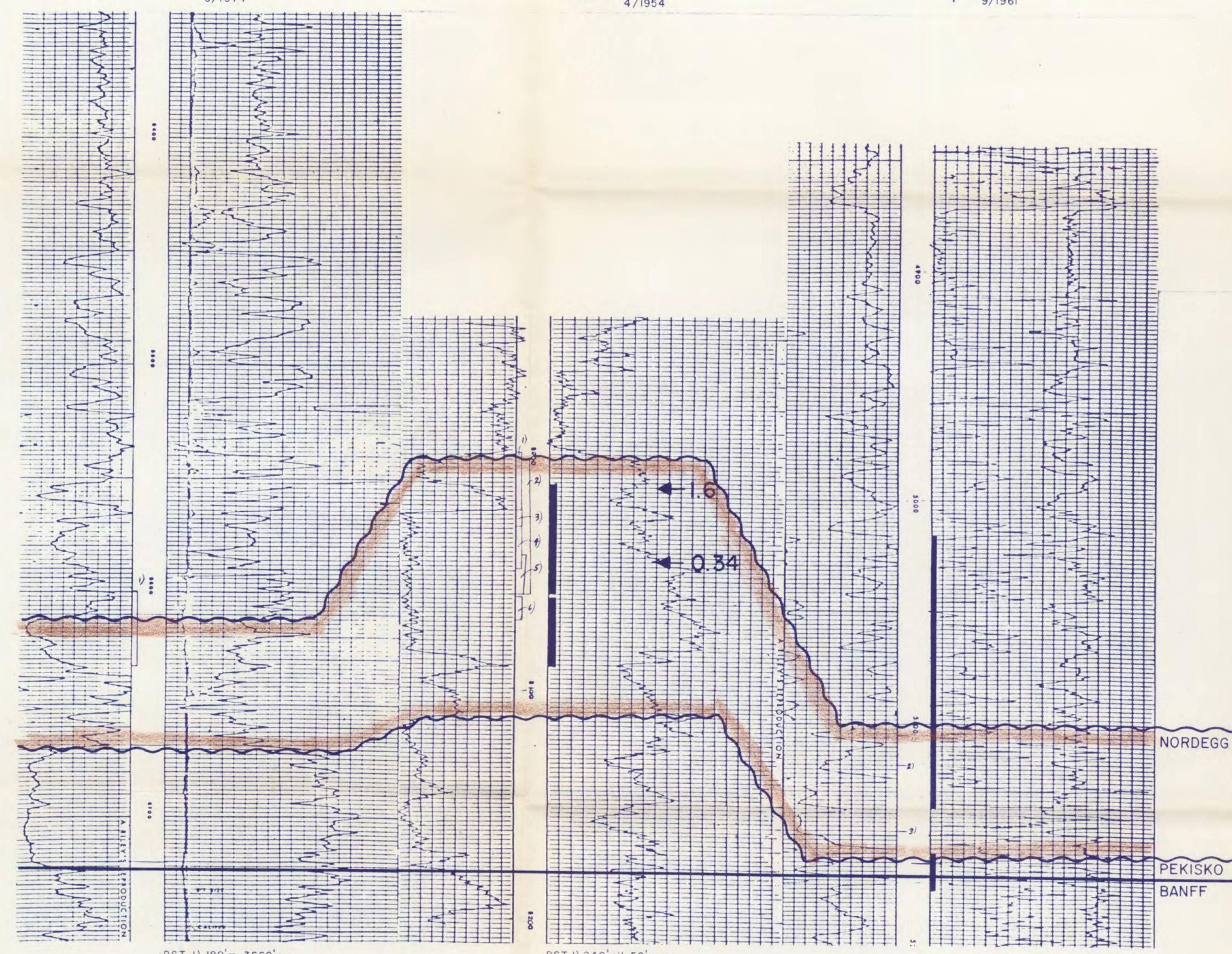
GREENCOURT S.

NORDEGG PHOSPHORITE
STRATIGRAPHIC CROSS SECTION N-N'

Vert. Scale: 1" = 40'
Datum - Top Banff

Enclosure 2

J.R. CENTURY PETROLEUM CONSULTANTS LTD. DEC. 1976



DST 1) 180'm, 3660' sw

DST 1) 240' oil, 50' ocm
2) 290' ocm
3) 15' ocm
4) mud
5) 38' m
6) 3220' sul sw

Wireline 1) 2800 cc filt w
2) 6800 cc filt w
3) 15,000 cc form w

← P₂O₅%

