

MAR 19770030: WHITECOURT EAST

Received date: Dec 31, 1977

Public release date: Jan 01, 1979

DISCLAIMER

By accessing and using the Alberta Energy website to download or otherwise obtain a scanned mineral assessment report, you ("User") agree to be bound by the following terms and conditions:

- a) Each scanned mineral assessment report that is downloaded or otherwise obtained from Alberta Energy is provided "AS IS", with no warranties or representations of any kind whatsoever from Her Majesty the Queen in Right of Alberta, as represented by the Minister of Energy ("Minister"), expressed or implied, including, but not limited to, no warranties or other representations from the Minister, regarding the content, accuracy, reliability, use or results from the use of or the integrity, completeness, quality or legibility of each such scanned mineral assessment report;
- b) To the fullest extent permitted by applicable laws, the Minister hereby expressly disclaims, and is released from, liability and responsibility for all warranties and conditions, expressed or implied, in relation to each scanned mineral assessment report shown or displayed on the Alberta Energy website including but not limited to warranties as to the satisfactory quality of or the fitness of the scanned mineral assessment report for a particular purpose and warranties as to the non-infringement or other non-violation of the proprietary rights held by any third party in respect of the scanned mineral assessment report;
- c) To the fullest extent permitted by applicable law, the Minister, and the Minister's employees and agents, exclude and disclaim liability to the User for losses and damages of whatsoever nature and howsoever arising including, without limitation, any direct, indirect, special, consequential, punitive or incidental damages, loss of use, loss of data, loss caused by a virus, loss of income or profit, claims of third parties, even if Alberta Energy have been advised of the possibility of such damages or losses, arising out of or in connection with the use of the Alberta Energy website, including the accessing or downloading of the scanned mineral assessment report and the use for any purpose of the scanned mineral assessment report so downloaded or retrieved.
- d) User agrees to indemnify and hold harmless the Minister, and the Minister's employees and agents against and from any and all third party claims, losses, liabilities, demands, actions or proceedings related to the downloading, distribution, transmissions, storage, redistribution, reproduction or exploitation of each scanned mineral assessment report obtained by the User from Alberta Energy.

REPORT ON
QUARTZ MINERAL EXPLORATION PERMIT
6876070001

August 2, 1977

19770030

ECONOMIC MINERALS FILE REPORT No <i>PHS-AF-027</i>
--

J. R. Century Petroleum Consultants, Ltd.

REPORT ON PROGRESS OF EXAMINATION

Permit No. 6876070001

1. Geological Interpretation: (Maps and Cross-sections)
 - A. Nordegg Phosphorite Isopach (enclosure 1)
 - B. Correlations (enclosures 2 & 3)
 - C. Lithology (enclosed lithologs)
 - D. Core Analysis (enclosures 2 & 3)
 - E. Drill Stem Tests (enclosures 2 & 3)

2. Geochemical Analysis and X-Ray Mineralogy
 - A. P_2O_5 % (enclosures 1, 2 & 3)
 - B. X-Ray Diffraction (enclosed X-Ray Diffraction patterns)

3. Expenditure during First Year (see attached schedule)

4. Work Program for 1977-78
 - A. Refinement and continuation of items 1 & 2 above -
J. R. Century and the Geological Survey of Canada.
 - B. Research on the kinetics of in situ solution processes -
Alberta Research Council and J. Hyne
 - C. Seismic interpretation of Nordegg paleotopography -

 - D. Estimated expenditures - \$5,000.00

EXPENDITURES

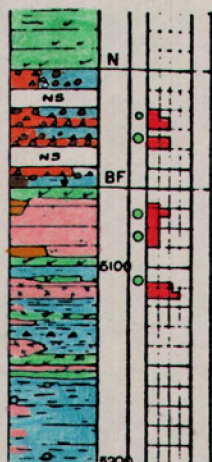
Quartz Mineral Exploration Permit No. 6876070001

1.	[REDACTED] P. Geol. Technical Consulting Fee for geologic interpretation and preparation of report.	\$2,000.00
2.	Paid Employees: One full time technician - [REDACTED] Petroleum Tech. One part-time assistant and one part time draftsman	850.00 250.00
3.	Outside Services: Field Log Library, Rileys, Western Canadian Reproduction, ERCB, Laboratory costs for geochemistry and x-ray mineralogy.	600.00
4.	Outside Consultants University and Government Research and Consulting services. (Deemed value in lieu of expenditure)	1,200.00
5.	Travel, Field Work, Long Distance calls	100.00
	Estimated Total Expenditure	<hr/> \$5,000.00

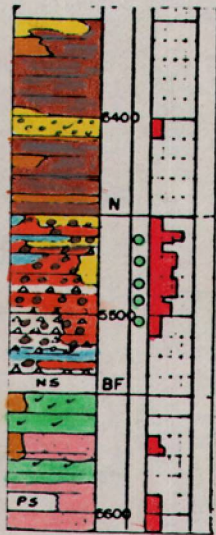
CONCLUDING REMARKS

Request for Waiver of Renewal Rental

The negative reaction of a number of corporations to the proposal for in situ solution extraction of phosphate indicates that industry is not currently prepared to risk a long-term investment of this kind. This is unfortunate; a domestic phosphate industry is so obviously in the national interest, and so potentially profitable, that this indifference is surprising. The Department of Energy, Mines and Resources recognizes the import, and the Alberta Research Council has favourably judged the technical merit of the project; but they are unable to support it financially. This lack of financial assistance is taxing to the continuation of research, and for this reason I request that the Minister waive rental fees for the upcoming year.

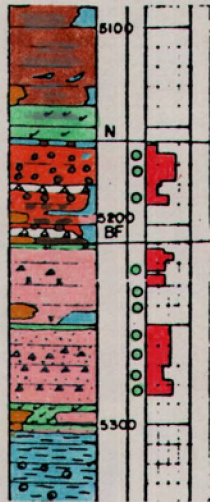


1-11-54-7W5
19770030



13-31-54-7W

19770030



6-8-55-6WJ

19770030.

6-8-55-6w5
KB 2728

6-15-55-6w5
KB 2483

12-32-55-5w5
KB 2445

11-1-56-5w5
KB 2349

3/1961

2/1966

GLAUC
5/1968

3/1969

QUARTZ MINERAL EXPLORATION PERMIT NO. 6876070001

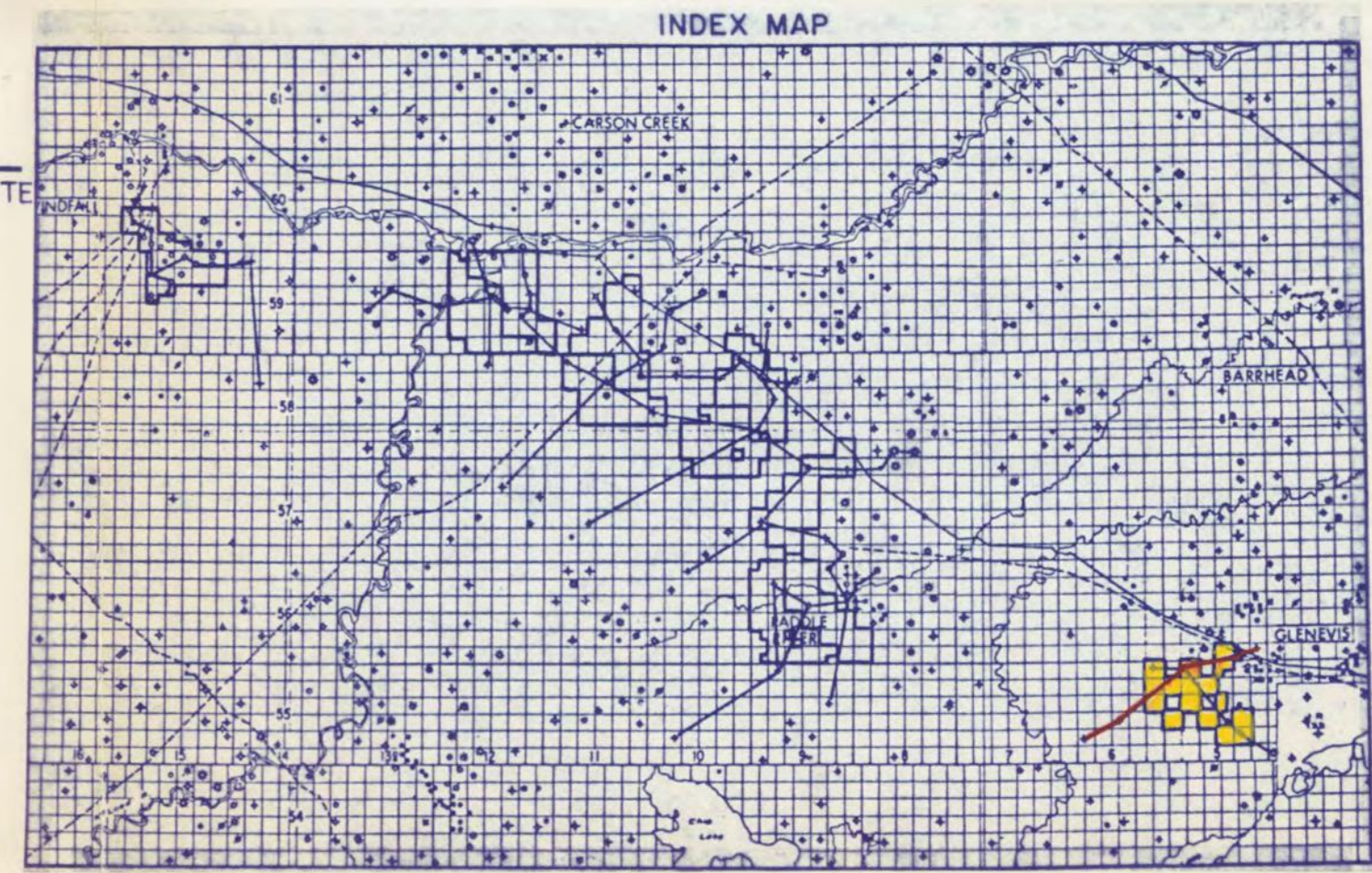
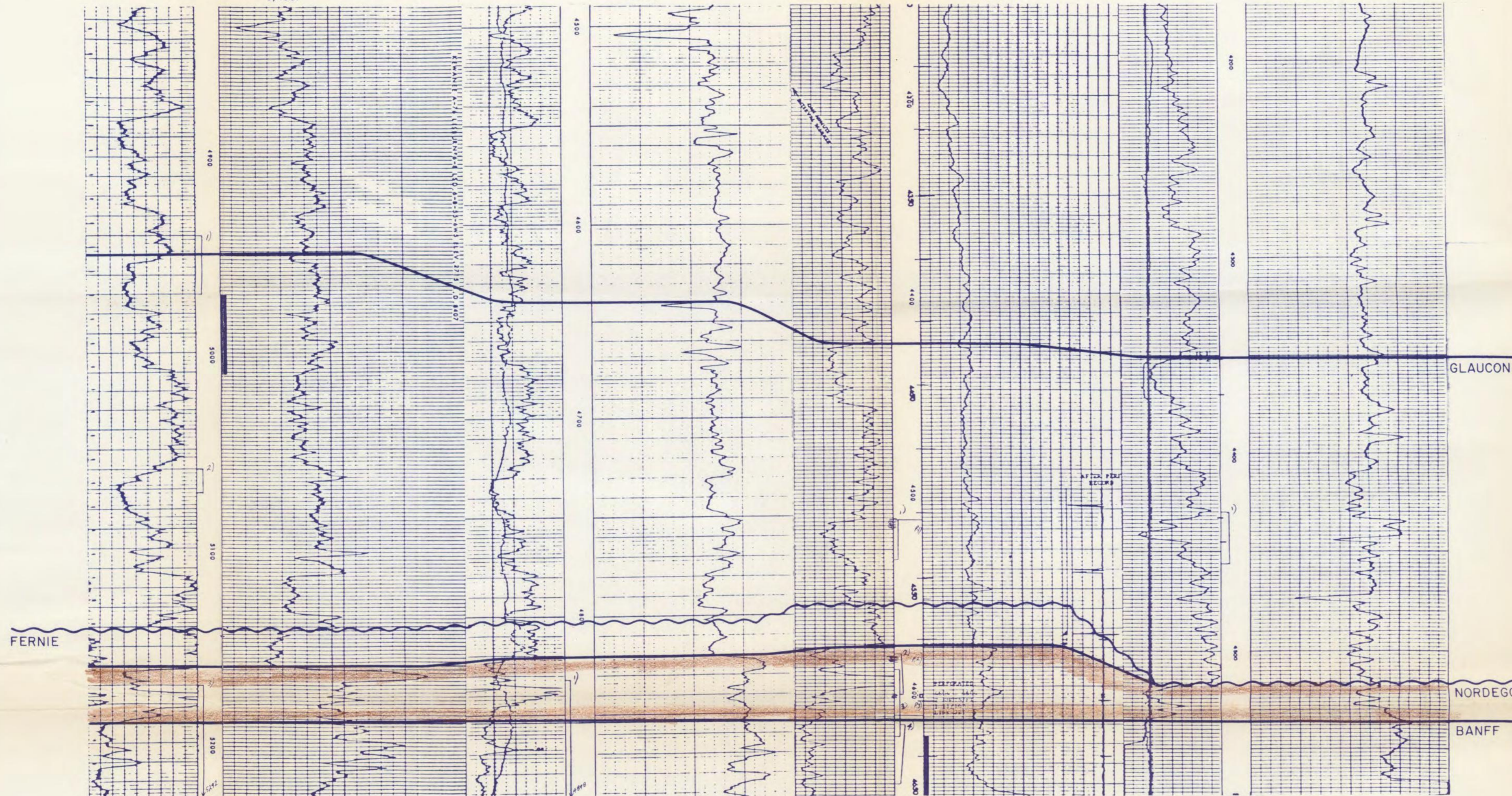
CHERRILL

NORDEGG PHOSPHORITE
STRATIGRAPHIC CROSS SECTION V-V'

19770030
Enclosure 2

Vert. Scale: 1" = 40'
Datum - Top Banff

J.R. CENTURY PETROLEUM CONSULTANTS LTD. DEC. 1976

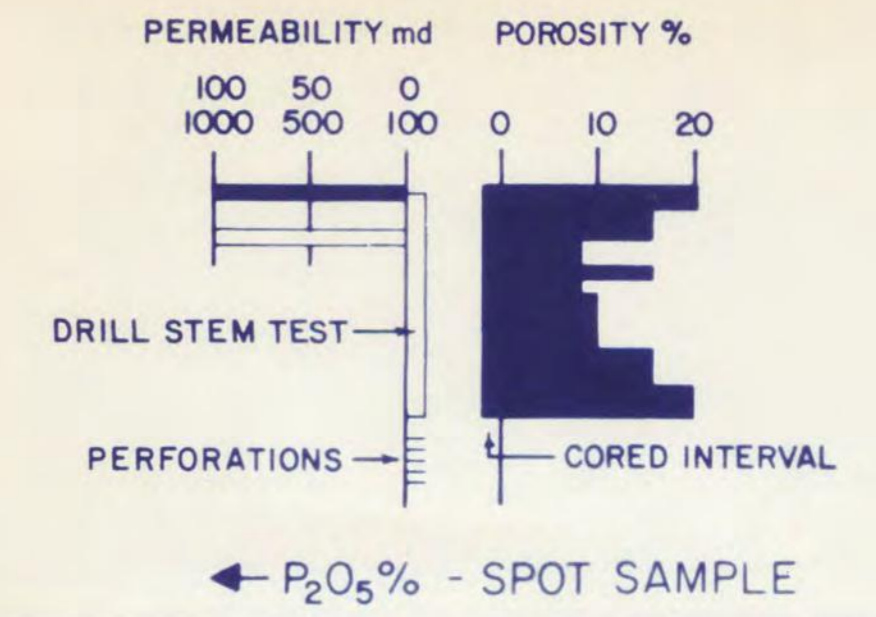


DST 1) 50' of fm
2) 30' mc sw, 660' cl sw
3) 1500' of fm sw

DST 1) 90' wcm, 210' m

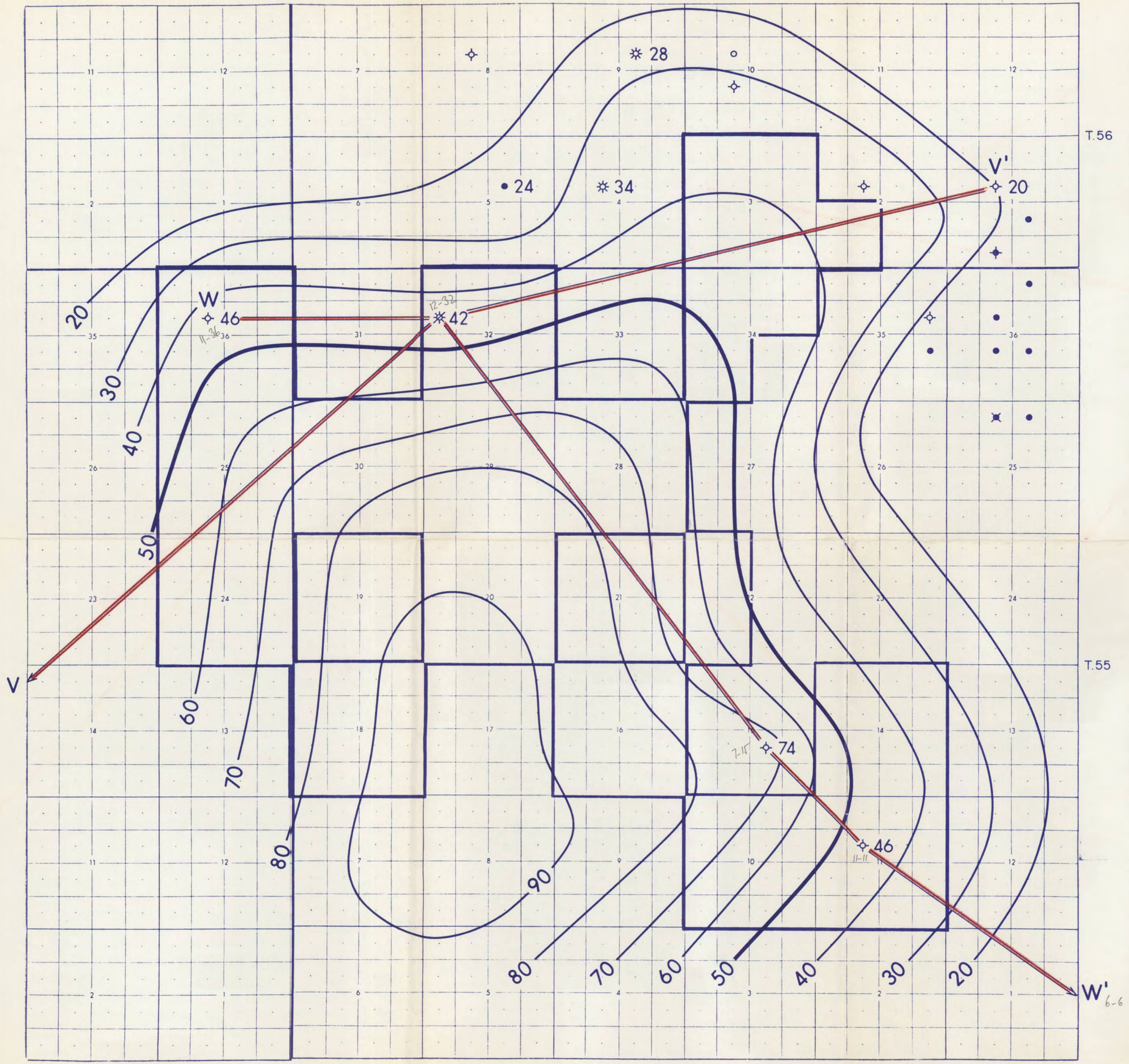
DST 1) 1.8 mmcf/d, 25' m
2) 74 mcf/d inc 214 mcf/d, 140' wcm
3) GTS-TSTM, 3592' gc oil, 778' sw
4) GTS-TSTM, 60' ocm, 240' gc mc oil,
120' gc oc sw, 1850' sli gc sw
Perfs 1) 500 mcf/d
2) 175 dec 150 mcf/d
3) 250 mcf/d

DST 1) 180' gc mc oil



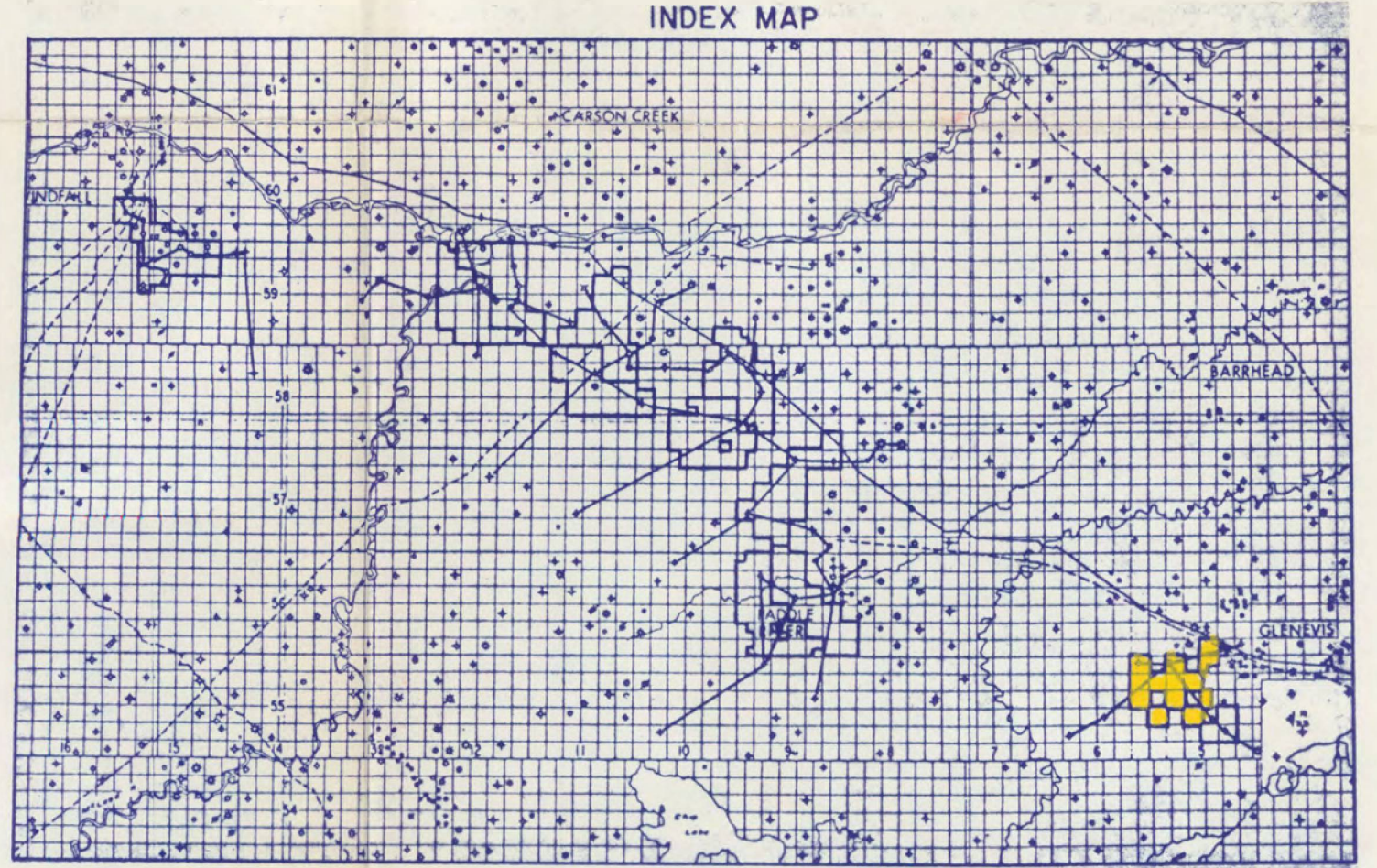
R.6w5

R.5w5



T.56

T.55



QUARTZ MINERAL EXPLORATION PERMIT NO. 6876070001

ISOPACH
 NØRDEGG PHOSPHORITE? (To Lal Nordegg)
 CHERHILL

19770030.

Scale: 2" = 1 mile C.I. = 10' Enclosure 1

J.R. CENTURY PETROLEUM CONSULTANTS LTD. DEC. 1976

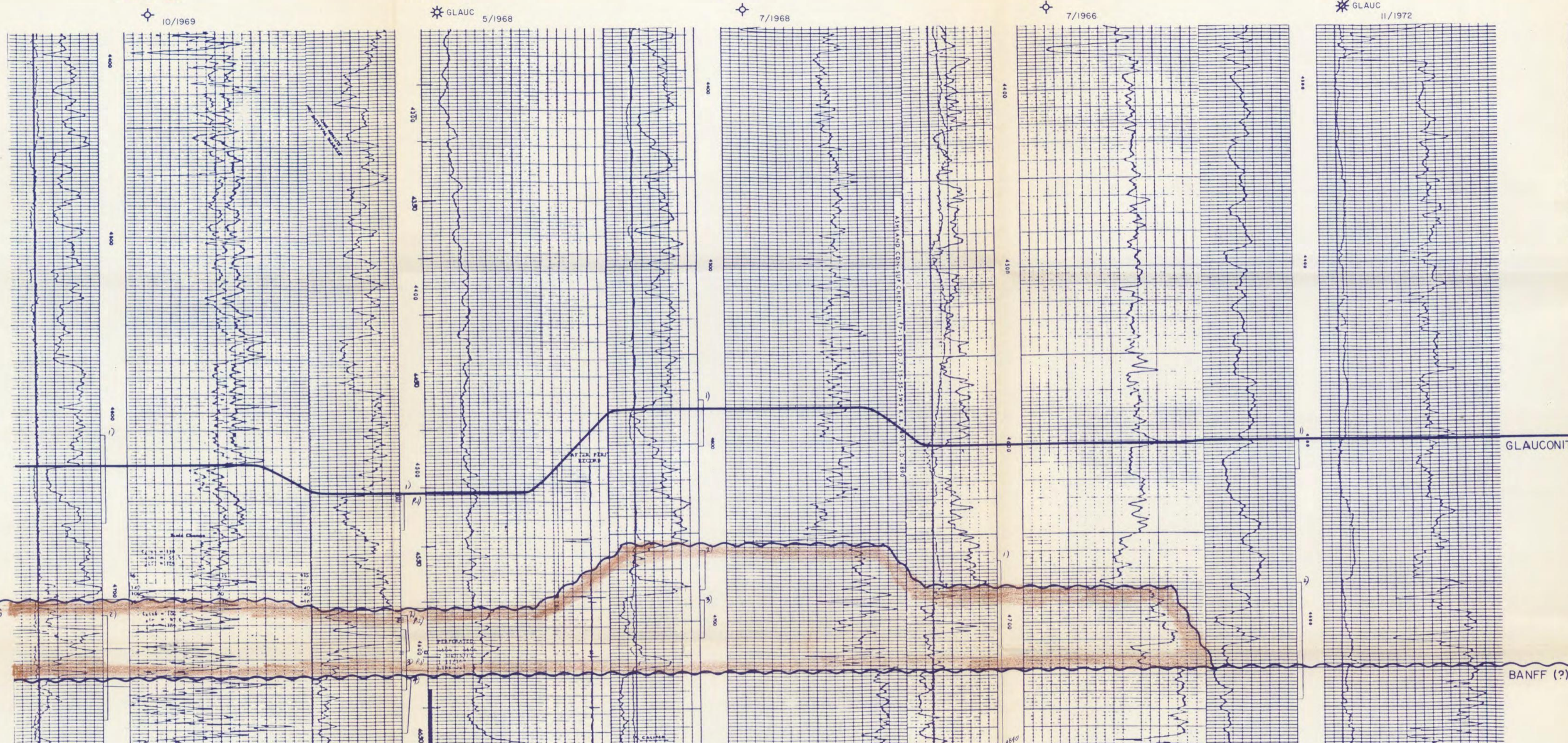
11-36-55-6w5
KB 2496

12-32-55-5w5
KB 2445

7-15-55-5w5
KB 2487

11-11-55-5w5
KB 2502

6-6-55-4w5
KB 2438



DST 1) 30'm, 190' gcm sw, 2105 gcs w
2) 280' dr fl, 53'm

DST 1) 18 mcf/d, 25'm
2) 214 mcf/d, 140'm
3) GTS-TSTM, 3592 gc oil, 778' sw

Perfs 1) 500 mcf/d
2) 175 dec 150 mcf/d
3) 250 mcf/d

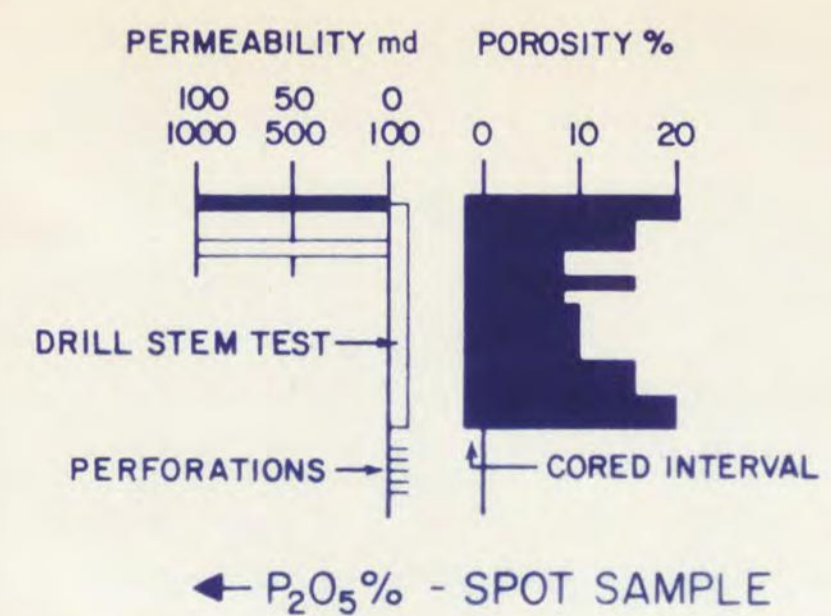
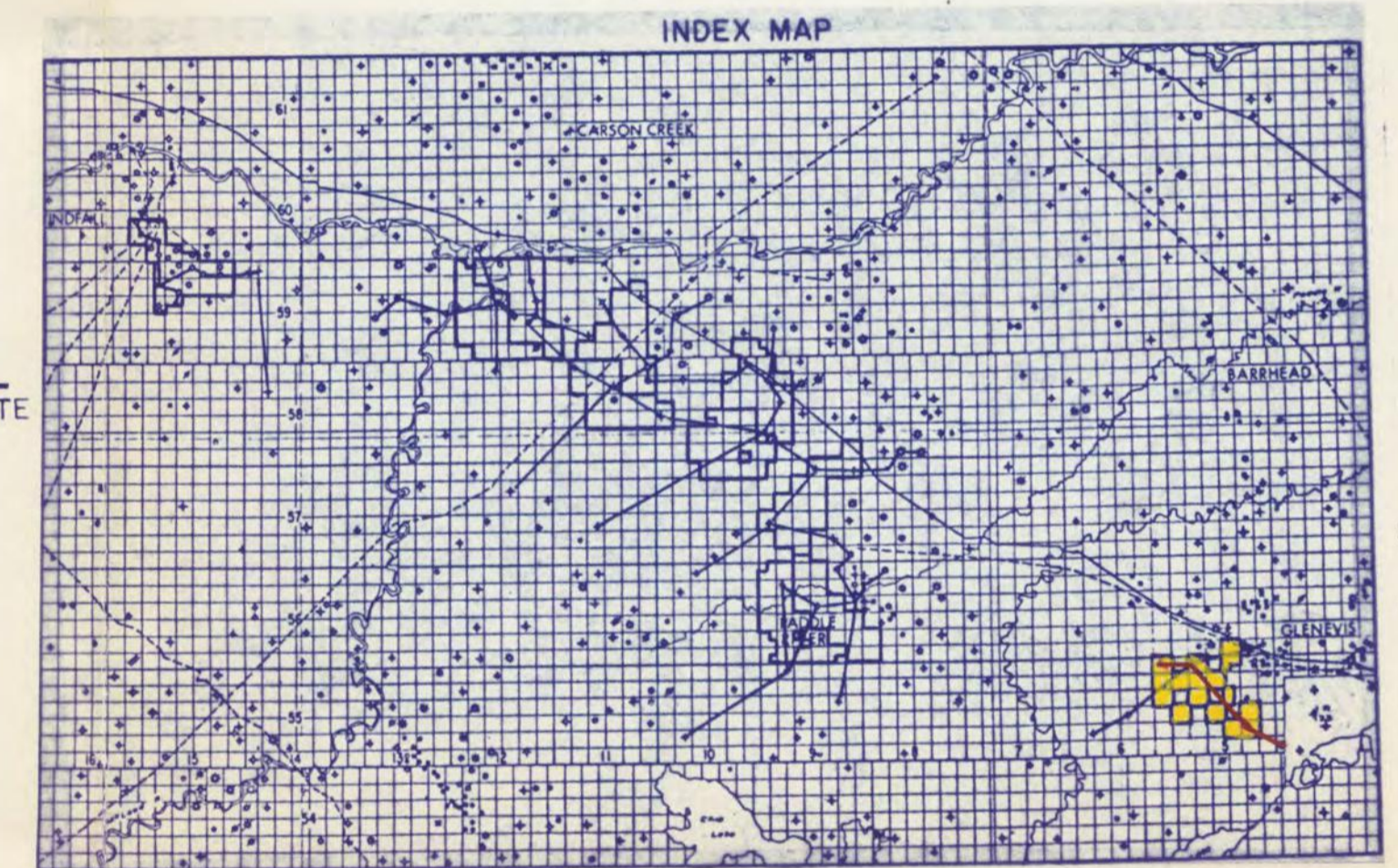
DST 4) GTS-TSTM, 60' ocm, 240' gcm oil,
120' gcs w, 1850' gcs w

DST 1) 2890' sw
2) 30'm
3) 360' mcw, 3800' gcs w

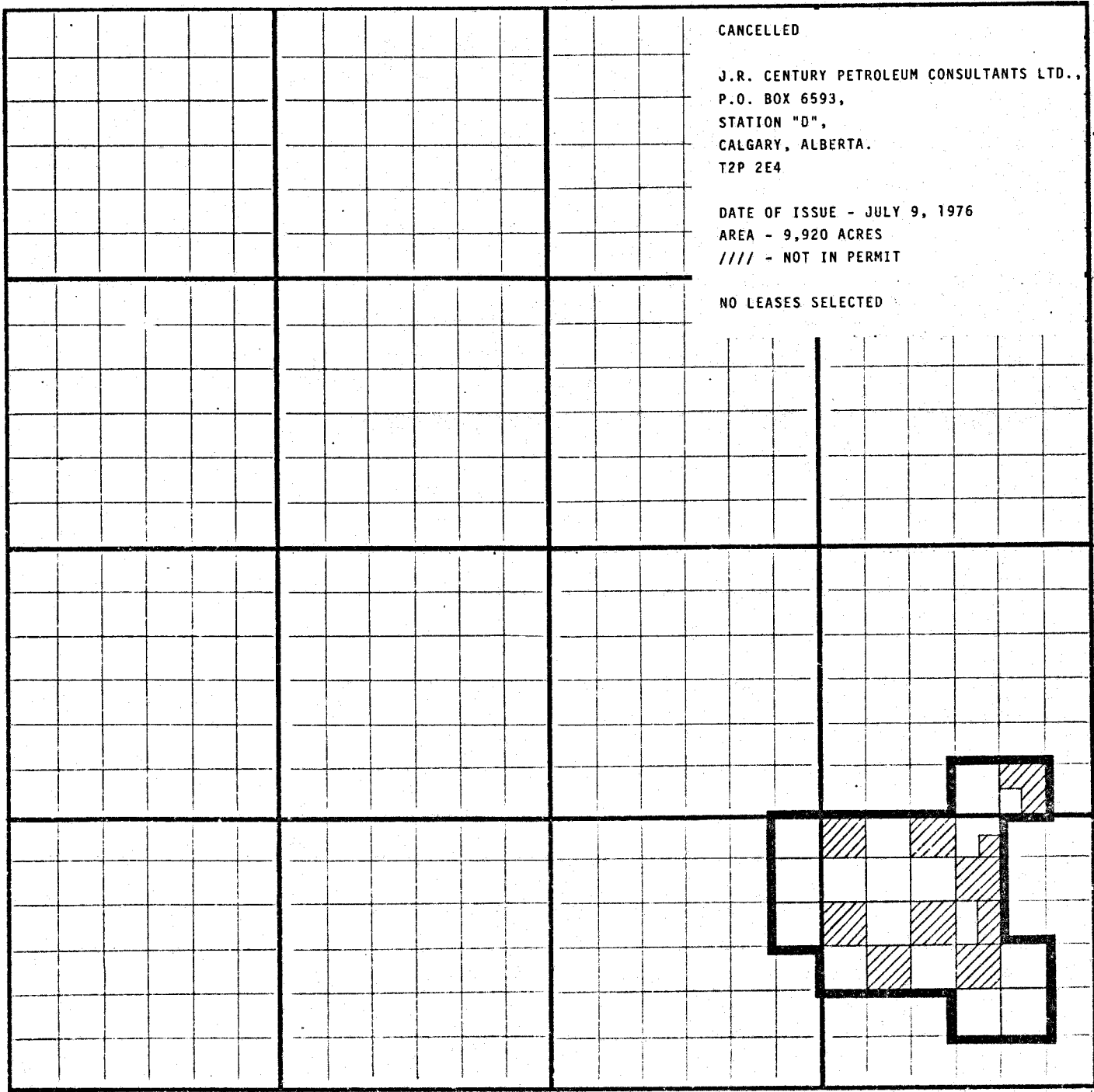
DST 1) 20 mcf/d, 180' gcm

DST 1) 33 mcf/d, 70' sw
2) 20'm

QUARTZ MINERAL EXPLORATION PERMIT NO. 6876070001
CHERRILL
NORDEGG PHOSPHORITE
STRATIGRAPHIC CROSS SECTION W-W'
19770030.
Enclosure 3
J.R. CENTURY PETROLEUM CONSULTANTS LTD. DEC. 1976



QUARTZ MINERAL EXPLORATION PERMIT NO. 6876070001



CANCELLED

J.R. CENTURY PETROLEUM CONSULTANTS LTD.,
P.O. BOX 6593,
STATION "D",
CALGARY, ALBERTA.
T2P 2E4

DATE OF ISSUE - JULY 9, 1976
AREA - 9,920 ACRES
/// - NOT IN PERMIT

NO LEASES SELECTED

R.

R.

R. 6

R.5 W.5 M.

TP.

TP.

TP.56

TP.55