

MAR 19770029: NORTHEASTERN ALBERTA

Received date: Dec 31, 1977

Public release date: Jan 01, 1979

DISCLAIMER

By accessing and using the Alberta Energy website to download or otherwise obtain a scanned mineral assessment report, you ("User") agree to be bound by the following terms and conditions:

- a) Each scanned mineral assessment report that is downloaded or otherwise obtained from Alberta Energy is provided "AS IS", with no warranties or representations of any kind whatsoever from Her Majesty the Queen in Right of Alberta, as represented by the Minister of Energy ("Minister"), expressed or implied, including, but not limited to, no warranties or other representations from the Minister, regarding the content, accuracy, reliability, use or results from the use of or the integrity, completeness, quality or legibility of each such scanned mineral assessment report;
- b) To the fullest extent permitted by applicable laws, the Minister hereby expressly disclaims, and is released from, liability and responsibility for all warranties and conditions, expressed or implied, in relation to each scanned mineral assessment report shown or displayed on the Alberta Energy website including but not limited to warranties as to the satisfactory quality of or the fitness of the scanned mineral assessment report for a particular purpose and warranties as to the non-infringement or other non-violation of the proprietary rights held by any third party in respect of the scanned mineral assessment report;
- c) To the fullest extent permitted by applicable law, the Minister, and the Minister's employees and agents, exclude and disclaim liability to the User for losses and damages of whatsoever nature and howsoever arising including, without limitation, any direct, indirect, special, consequential, punitive or incidental damages, loss of use, loss of data, loss caused by a virus, loss of income or profit, claims of third parties, even if Alberta Energy have been advised of the possibility of such damages or losses, arising out of or in connection with the use of the Alberta Energy website, including the accessing or downloading of the scanned mineral assessment report and the use for any purpose of the scanned mineral assessment report so downloaded or retrieved.
- d) User agrees to indemnify and hold harmless the Minister, and the Minister's employees and agents against and from any and all third party claims, losses, liabilities, demands, actions or proceedings related to the downloading, distribution, transmissions, storage, redistribution, reproduction or exploitation of each scanned mineral assessment report obtained by the User from Alberta Energy.

19770029

NORCEN ENERGY RESOURCES LIMITED

YEAR-END REPORT

1977 EXPLORATION PROGRAM

QUARTZ MINERAL EXPLORATION PERMITS
NORTHEASTERN ALBERTA

ORIGINAL

November, 1977

G. McWilliams
D. A. Sawyer, P. Geol.

"THE INFORMATION CONTAINED HEREIN HAS
BEEN ACQUIRED BY VIRTUE OF THE ATOMIC
ENERGY CONTROL REGULATIONS PURSUANT TO
THE ATOMIC ENERGY CONTROL ACT THIS INFOR-
MATION IS NOT TO BE RELEASED WITHOUT
THE PERMISSION OF THE ORIGINATOR."

Drilling SummaryHole #1

Location: Tp. 107 R9 Sec. 4 NW West of the 4th Meridian
 Permit No. 6876120003 N.T.S. Ref. 74L
 Started: August 18, 1977 Completed: August 20, 1977

0-142 feet	0-43.3 metres	-	overburden
142-189 feet	43.3-57.7 metres	-	dolomite
189-275 feet	57.7-83.9 metres	-	mudstone
275-305 feet	83.9-93.0 metres	-	granitic gneiss

Hole #2

Location: Tp 104 R6 Sec. 21 NW West of the 4th Meridian
 Permit No. 687612005 N.T.S. Ref. 74L
 Started: August 23, 1977 Completed: August 24, 1977

0-110 feet	0-33.6 metres	-	overburden
110-160 feet	33.6-48.8 metres	-	mudstone dolomite
160-184 feet	48.8-56.1 metres	-	sandstone La Loche formation
184-194 feet	56.1-59.2 metres	-	paragneiss

Hole #3

Location: Tp. 103 R7 Sec. 35 NW West of the 4th Meridian
 Permit No. 6876120006 N.T.S. Ref. 74E
 Started: August 25, 1977 Completed: August 26, 1977

0-91 feet	0-27.8 metres	-	overburden
91-160 feet	27.8-48.8 metres	-	dolomite
160-172 feet	48.8-52.5 metres	-	mudstone
172-197 feet	52.5-60.1 metres	-	mudstone sandstone
197-225 feet	60.1-68.6 metres	-	granitic gneiss

Hole #4

Location: Tp. 105 R6 Sec. 14 NW West of the 4th Meridian
 Permit No. 687612004 N.T.S. 74L
 Started: August 27, 1977 Completed: August 31, 1977

0-205 feet	0-62.5 metres	-	overburden
205-320 feet	62.5-97.6 metres	-	sandstone mudstone
320-337 feet	97.6-102.8 metres	-	granodiorite

Hole #5

Location: Tp. 107 R5 Sec. 28 SE West of the 4th Meridian
 Permit No. 211 N.T.S. 74L
 Started: September 3, 1977 Completed: September 10, 1977
 0-115 feet 0-35.1 metres - overburden
 115 827 feet 35.1 252.2 metres - Athabasca sandstone

Hole #6

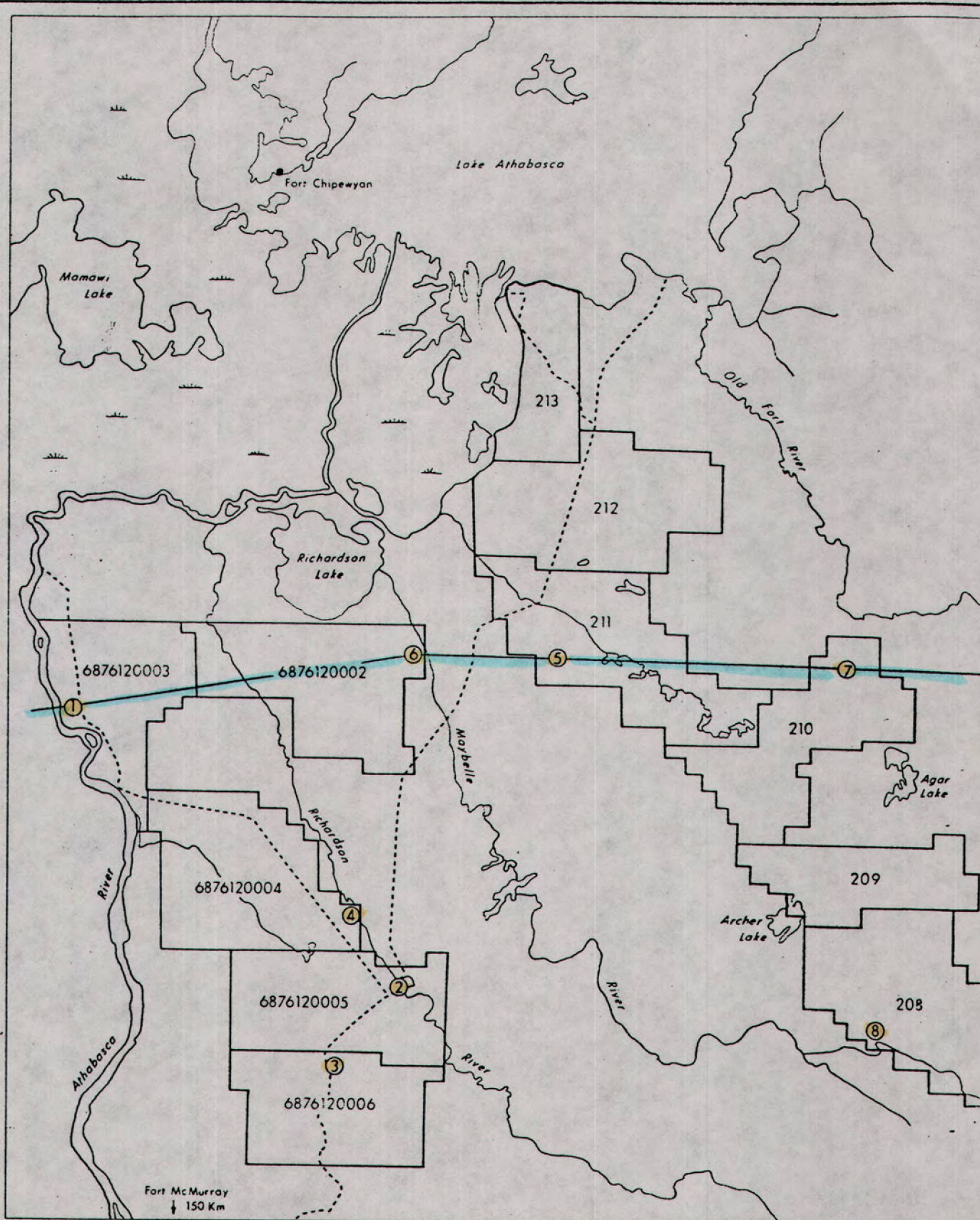
Location: Tp. 107 R6 Sec. 27 NE West of the 4th Meridian
 Permit No. 687612002 N.T.S. 74L
 Started: September 13, 1977 Completed: September 19, 1977
 0-45 feet 0-12.8 metres - overburden
 45-578 feet 12.8-176.4 metres - Athabasca sandstone
 578-721 feet 176.4-220.1 metres - coarse Athabasca sandstone
 721-767 feet 220.1-233.9 metres - altered granite

Hole #7

Location: Tp. 107 R2 Sec. 28 NE West of the 4th Meridian
 Permit No. 210 N.T.S. 74I
 Started: September 20, 1977 Completed: September 24, 1977
 0-156 feet 0-47.6 metres - overburden
 156 604 feet 47.6 184.2 metres - Athabasca sandstone

Hole #8

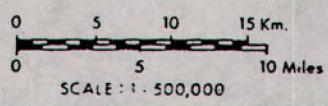
Location: Tp. 104 R2 Sec. 9 NE West of the 4th Meridian
 Permit No. 208 N.T.S. 74L
 Started: September 26, 1977 Completed: September 29, 1977
 0-114 feet 0-34.8 metres - overburden
 114 747 feet 34.8 227.8 metres - Athabasca sandstone



② DRILL SITES
 — LINE OF CROSS SECTION

FIGURE 2

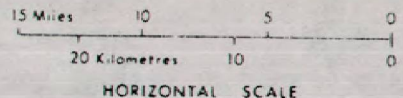
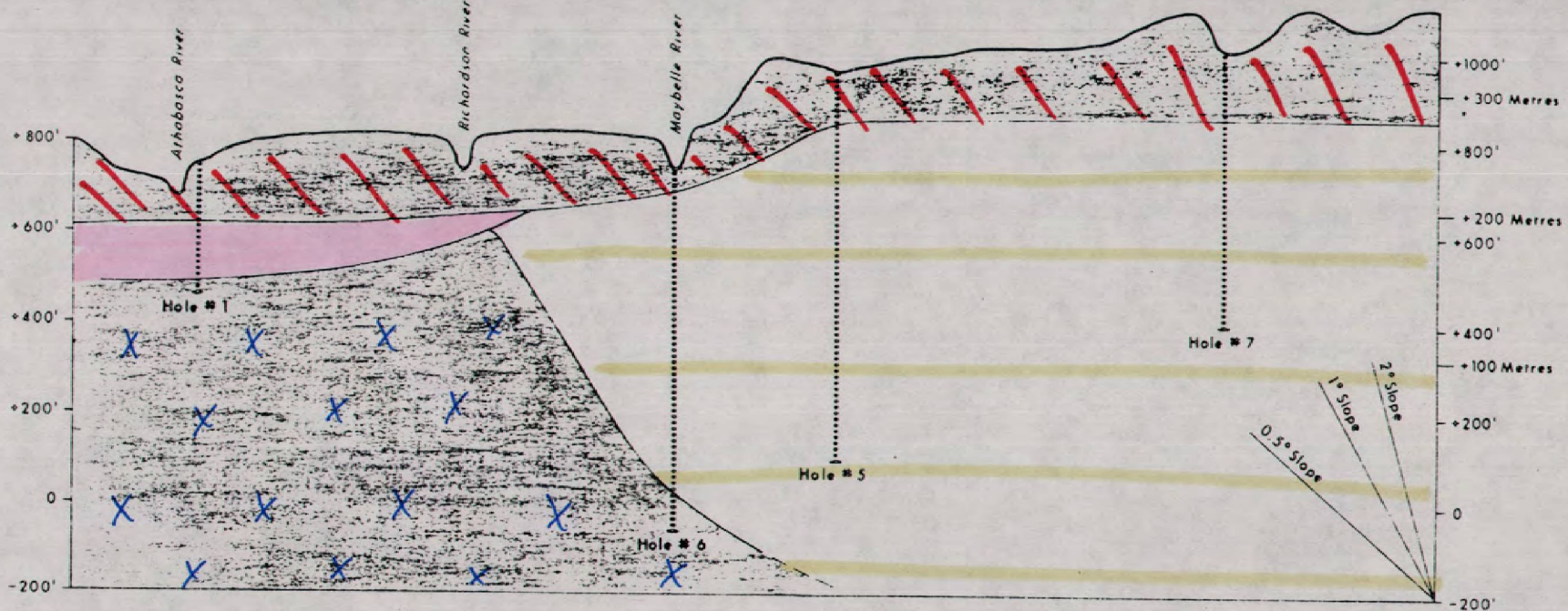
LOCATION OF DRILL SITES



19770029

111°30' | 111°00' | 110°30' | 110°00'

58°20' ——— RICHARDSON PERMITS ——— ARCHER PERMITS ——— ——— 58°20'

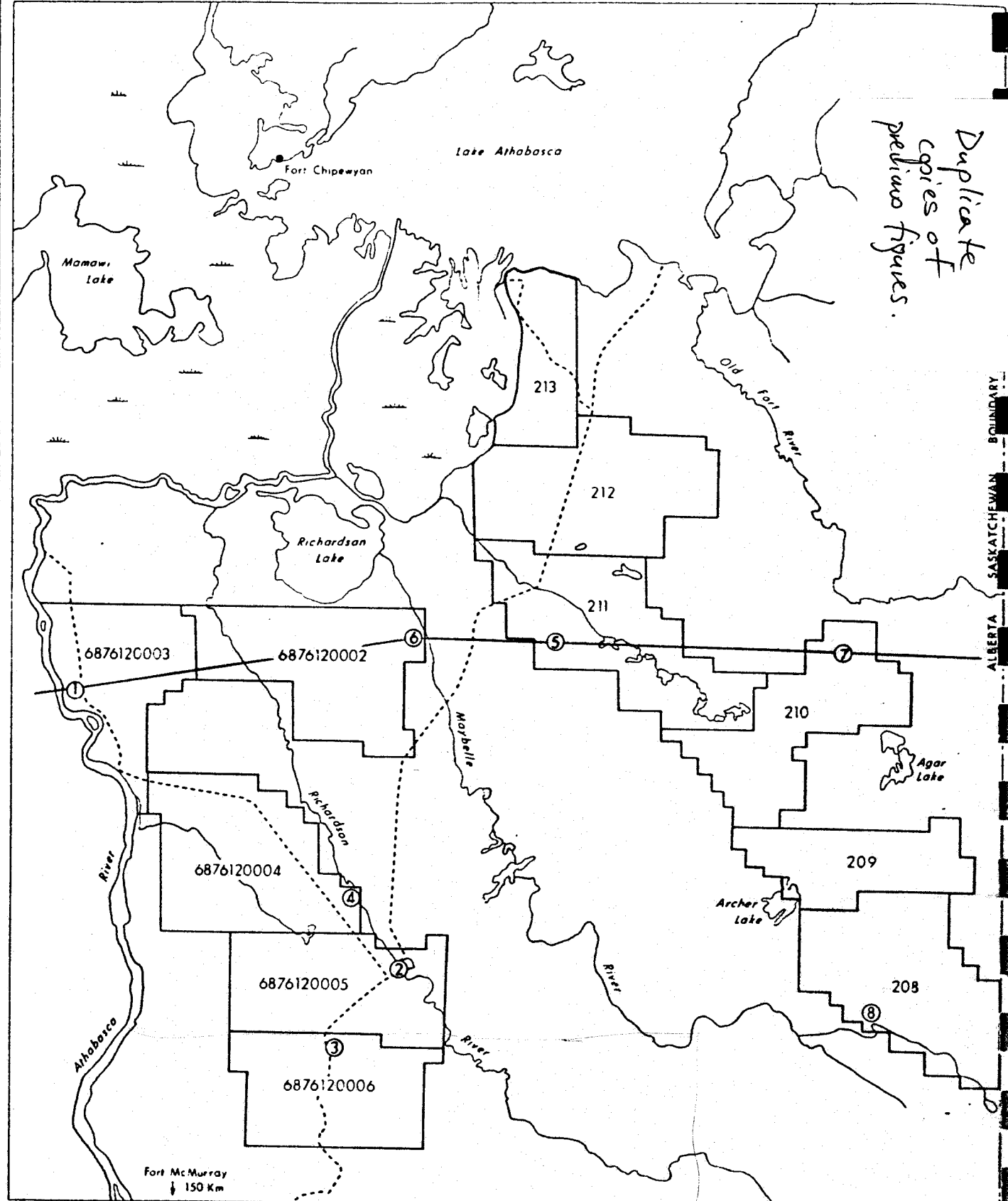


- PLEISTOCENE**
 Glacial Sand & Boulders
- DEVONIAN**
 Sandstone, Dolomite, Mudstone
- PROTEROZOIC**
 Athabasca Sandstone
- ARCHAEAN**
 Granite Paragneiss

EAST - WEST CROSS SECTION
 DRAWN ALONG 58°20'

Cross Section #1
 1977 0029

Duplicate
copies of
previous figures.



② DRILL SITES
— LINE OF CROSS SECTION

19770029
FIGURE 2

LOCATION OF DRILL SITES

