

MAR 19760001: NORTH KOOTENAY PASS

Received date: Feb 09, 1976

Public release date: Feb 10, 1977

DISCLAIMER

By accessing and using the Alberta Energy website to download or otherwise obtain a scanned mineral assessment report, you ("User") agree to be bound by the following terms and conditions:

- a) Each scanned mineral assessment report that is downloaded or otherwise obtained from Alberta Energy is provided "AS IS", with no warranties or representations of any kind whatsoever from Her Majesty the Queen in Right of Alberta, as represented by the Minister of Energy ("Minister"), expressed or implied, including, but not limited to, no warranties or other representations from the Minister, regarding the content, accuracy, reliability, use or results from the use of or the integrity, completeness, quality or legibility of each such scanned mineral assessment report;
- b) To the fullest extent permitted by applicable laws, the Minister hereby expressly disclaims, and is released from, liability and responsibility for all warranties and conditions, expressed or implied, in relation to each scanned mineral assessment report shown or displayed on the Alberta Energy website including but not limited to warranties as to the satisfactory quality of or the fitness of the scanned mineral assessment report for a particular purpose and warranties as to the non-infringement or other non-violation of the proprietary rights held by any third party in respect of the scanned mineral assessment report;
- c) To the fullest extent permitted by applicable law, the Minister, and the Minister's employees and agents, exclude and disclaim liability to the User for losses and damages of whatsoever nature and howsoever arising including, without limitation, any direct, indirect, special, consequential, punitive or incidental damages, loss of use, loss of data, loss caused by a virus, loss of income or profit, claims of third parties, even if Alberta Energy have been advised of the possibility of such damages or losses, arising out of or in connection with the use of the Alberta Energy website, including the accessing or downloading of the scanned mineral assessment report and the use for any purpose of the scanned mineral assessment report so downloaded or retrieved.
- d) User agrees to indemnify and hold harmless the Minister, and the Minister's employees and agents against and from any and all third party claims, losses, liabilities, demands, actions or proceedings related to the downloading, distribution, transmissions, storage, redistribution, reproduction or exploitation of each scanned mineral assessment report obtained by the User from Alberta Energy.

ECONOMIC MINERALS

FILE REPORT No

PB-AF-010(5)

19760001

RECEIVED

JAN 23 09 02 '76

ENERGY
NATURAL RESOURCES

KINTLA EXPLORATIONS LIMITED

FINAL REPORT

ON

EXPLORATION ACTIVITY

1972 - 1975

ON

QUARTZ MINERAL EXPLORATION PERMIT # 174

NORTH KOOTENAY PASS AREA

SOUTHWESTERN ALBERTA

January 16, 1976

E. Goble

Quartz mineral exploration permit # 174 comprises an area of 6,209 acres within the Clark Range of the Rocky Mountains, centered upon latitude 49° 26' N and longitude 114° 33' W in southwestern Alberta. The permit lies approximately 25 miles west-southwest of Pincher Creek, adjacent to the Alberta-British Columbia boundary in the Crowsnest Forest Reserve. The permit was obtained by Kintla Explorations Limited, an Alberta based company, in association with Mr. Paul Wilfort of Lethbridge, Alberta in June of 1972 and innitially consisted of 9,433 acres.

SUMMARY

The permit was taken out as a result of the discovery of high-grade lead-zinc-silver mineralization in the Siyeh Formation in the area and the knowledge of the presence of some lead-zinc mineralization in the North Kootenay Pass area. An initial prospecting program was undertaken on permit # 174 during the summer of 1972 and spring of 1973. Two reports detailing this program are appended:

1. Geological Report # V-P-1 - Kintla Explorations Limited, E. Goble, February, 1973.
2. Supplementary Report # W-P-1 - Kintla Explorations Limited, E. Goble, July, 1973.

This initial program totalled 60 man days and cost \$3,785.10.

A more detailed examination of the property was planned for the summer and fall of 1973 and the spring of 1974. More detailed prospecting was carried out during 1973, with a diamond drill program planned for early 1974, however, extreme snow conditions in the spring of 1974 prevented the carrying out of the proposed diamond drill program. The 1973-1974 program is summarized in the appended Kintla Explorations Limited Report on Prospecting Permit # 174 by E. Goble dated June 27, 1974. The 1973-1974 program totalled 45 man days and \$3,410.03 expended on the property between July 1973 and June 1974. The property was reduced in

ize at the end of this second year.

The diamond drill program initially planned for the spring of 1974 was carried out on the property during July, August, and September of 1974. The drill logs and statement of expenditure are presented in the appended Kintla Explorations Limited Final Report on Quartz Mineral Exploration Permit # 174 by E. Goble, dated June 30, 1975. The 1974-1975 program expenditure totalled \$11,789.02.

Therefore, during the three years of exploration on Quartz Mineral Exploration Permit # 174 (prior to its conversion to a lease) the expenditures by Kintla Explorations Limited and Paul Wilfort were as follows:

Year of Permit		
1	July 1972 to June 1973	\$3,785.10
2	July 1972 to June 1974	\$3,410.03
3	July 1974 to June 1975	<u>\$11,789.02</u>
3 year Total - July 1972 to June 1975		\$18,984.15

Additional prospecting was carried out on the property during the fall of 1975, primarily for MoS_2 and U_3O_8 , but these expenditures have not been included in this summary.

Edmonton, Alberta

January 16, 1976

E. Goble


I, E.O. Goble, of the city of Edmonton, in the province of Alberta hereby declare:

1. That I am a member in good standing of the Association of Professional Engineers, Geologists, and Geophysicists of Alberta.

2. That I am a graduate of the University of Alberta with the degrees of Bachelor of Science, 1968, and Bachelor of Science (Geology), 1969.

3. That I hold the position of Chief Geologist and President of Kintla Explorations Limited of 11420 - 73 Avenue, Edmonton, Alberta.

4. That I supervised the work on Quartz Mineral Explorations Permit # 174.

5. That the statements of work are true statements of costs incurred on the property.

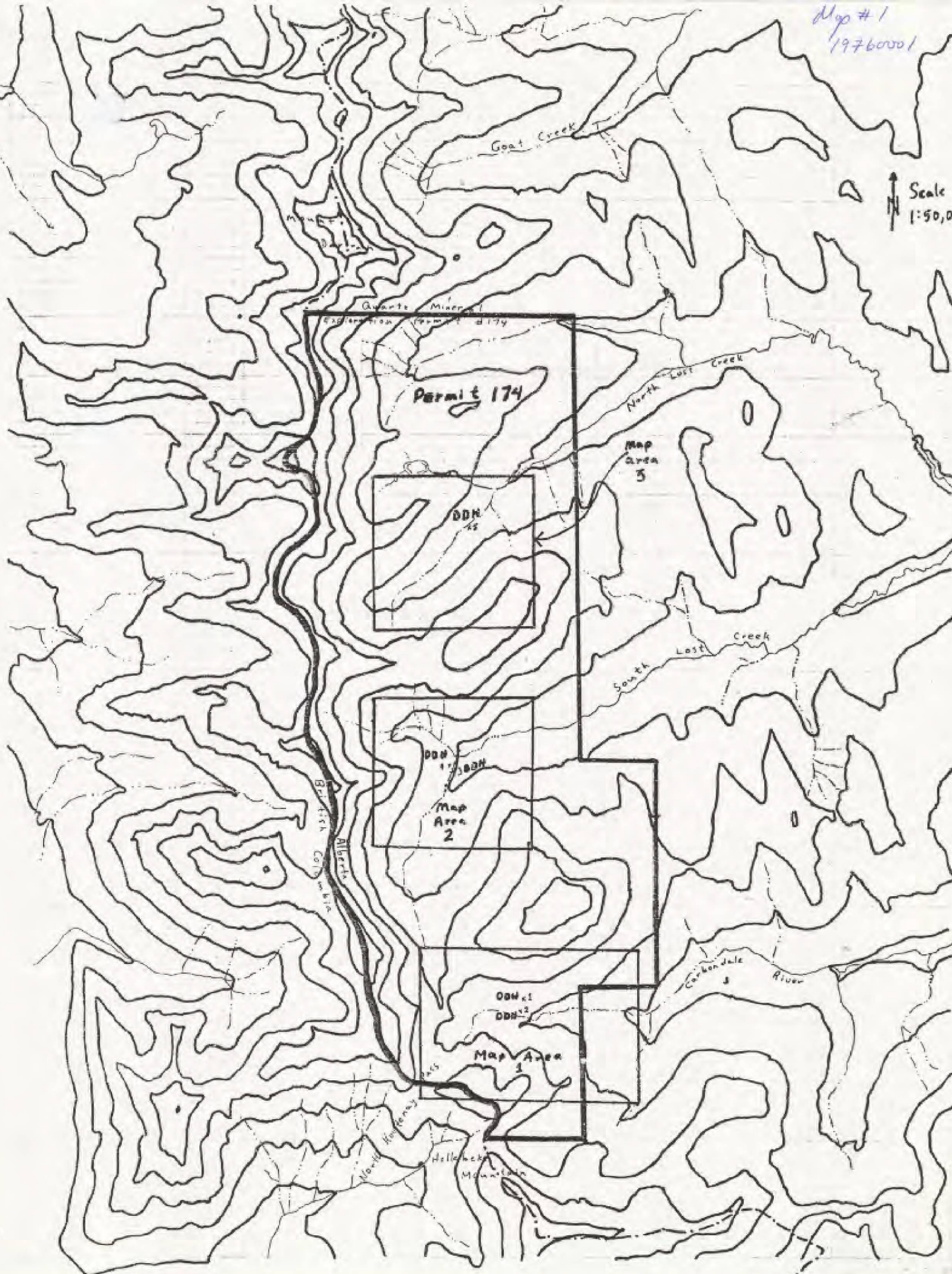
Submitted January 16, 1976



E.O. Goble

Map # 1
19760001

Scale
1:50,000





Scale
1:10,000
Map AREA 1

6500' Contour

7000' Contour

6500' Contour

6000' Contour

FORESTRY ROAD

DDH 1

DDH 2

Contour
Interval
500 feet

Carbondale
River

CARBONDALE RIVER

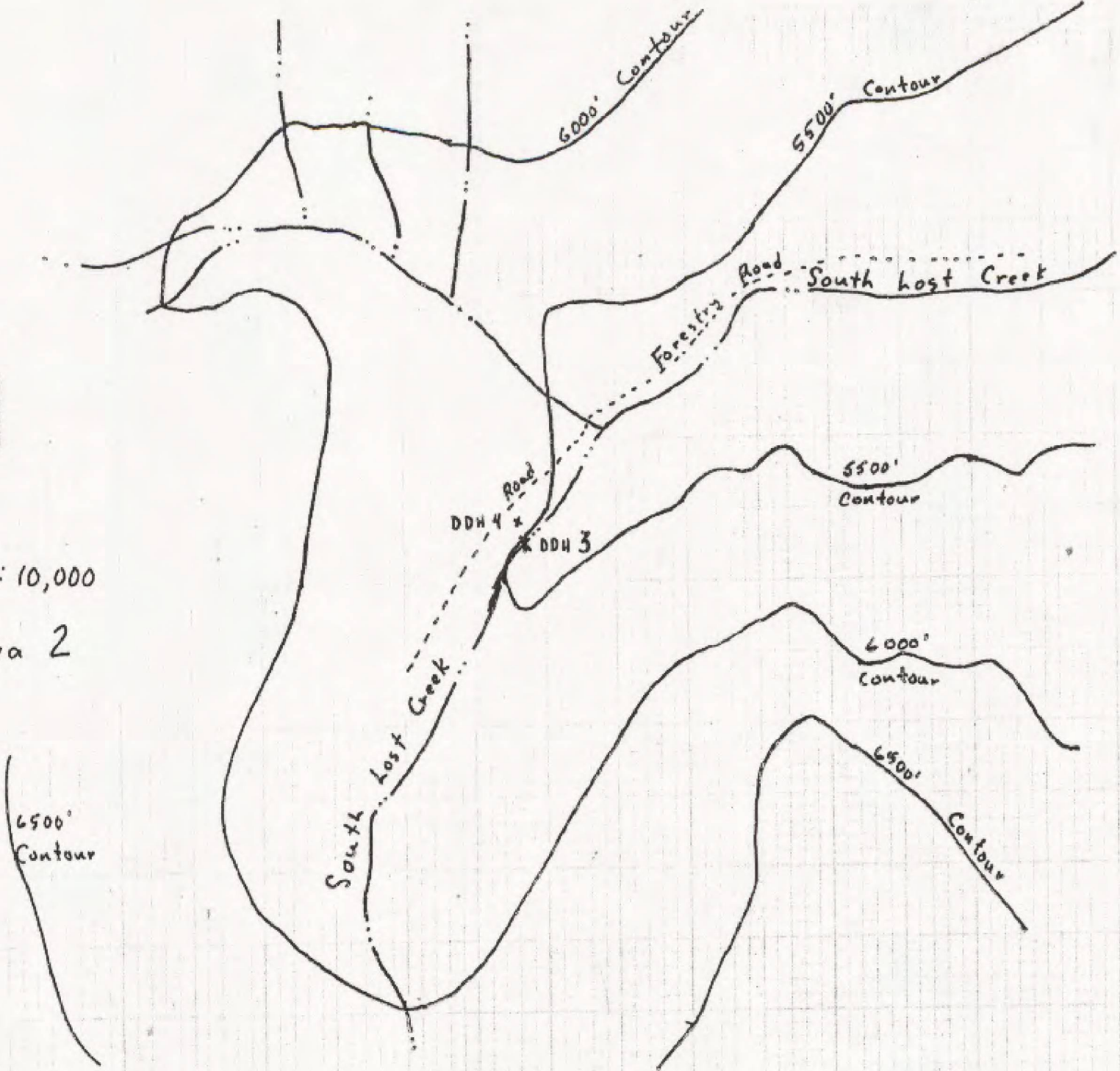
6500' Contour

6000' Contour

19760001



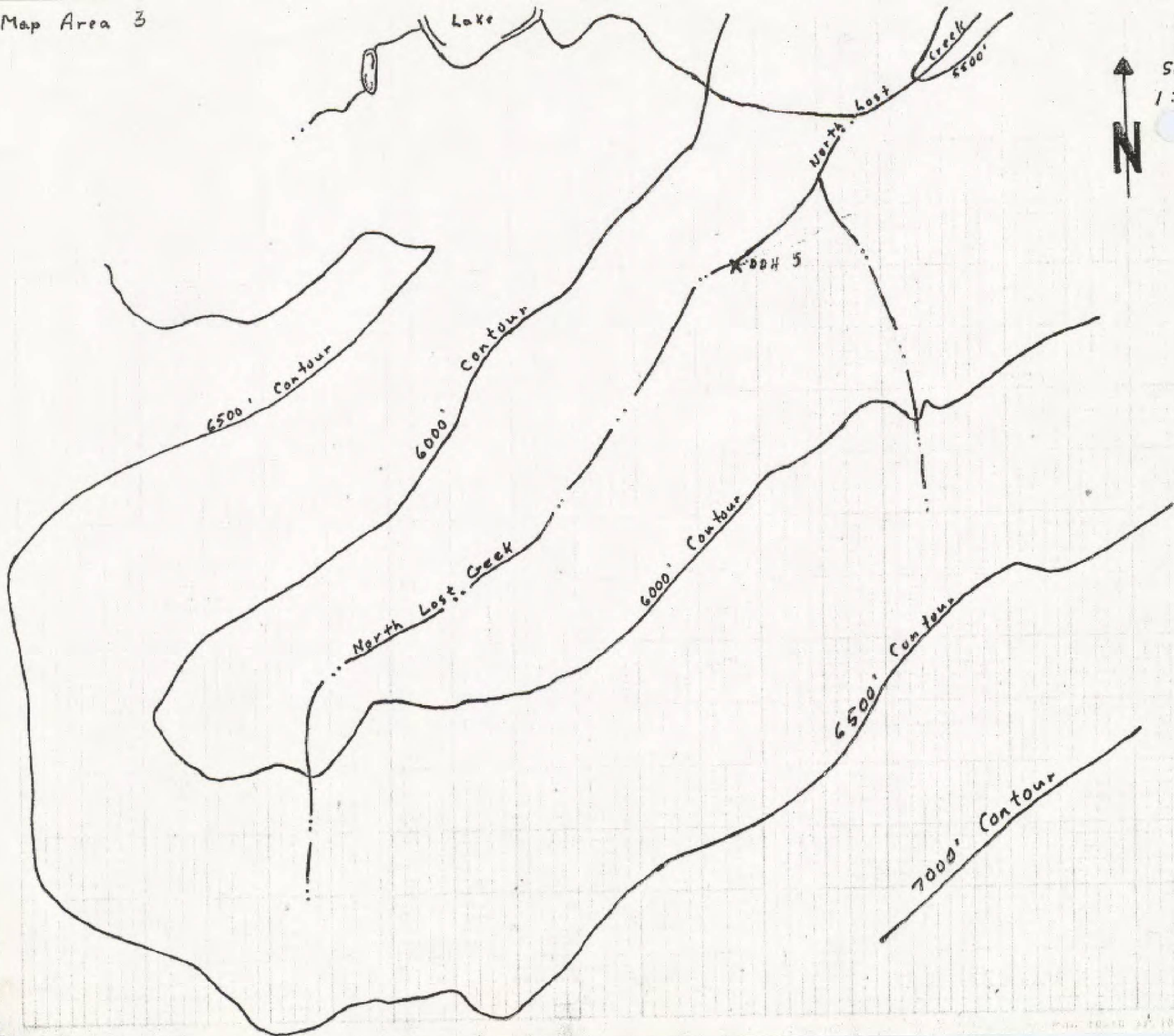
Scale 1:10,000
Map Area 2



19760201

Map Area 3

Scale
1:10,000



1976000/