

MAR 19750001: SOUTHWESTERN ALBERTA

Received date: Dec 31, 1975

Public release date: Jan 01, 1977

DISCLAIMER

By accessing and using the Alberta Energy website to download or otherwise obtain a scanned mineral assessment report, you ("User") agree to be bound by the following terms and conditions:

- a) Each scanned mineral assessment report that is downloaded or otherwise obtained from Alberta Energy is provided "AS IS", with no warranties or representations of any kind whatsoever from Her Majesty the Queen in Right of Alberta, as represented by the Minister of Energy ("Minister"), expressed or implied, including, but not limited to, no warranties or other representations from the Minister, regarding the content, accuracy, reliability, use or results from the use of or the integrity, completeness, quality or legibility of each such scanned mineral assessment report;
- b) To the fullest extent permitted by applicable laws, the Minister hereby expressly disclaims, and is released from, liability and responsibility for all warranties and conditions, expressed or implied, in relation to each scanned mineral assessment report shown or displayed on the Alberta Energy website including but not limited to warranties as to the satisfactory quality of or the fitness of the scanned mineral assessment report for a particular purpose and warranties as to the non-infringement or other non-violation of the proprietary rights held by any third party in respect of the scanned mineral assessment report;
- c) To the fullest extent permitted by applicable law, the Minister, and the Minister's employees and agents, exclude and disclaim liability to the User for losses and damages of whatsoever nature and howsoever arising including, without limitation, any direct, indirect, special, consequential, punitive or incidental damages, loss of use, loss of data, loss caused by a virus, loss of income or profit, claims of third parties, even if Alberta Energy have been advised of the possibility of such damages or losses, arising out of or in connection with the use of the Alberta Energy website, including the accessing or downloading of the scanned mineral assessment report and the use for any purpose of the scanned mineral assessment report so downloaded or retrieved.
- d) User agrees to indemnify and hold harmless the Minister, and the Minister's employees and agents against and from any and all third party claims, losses, liabilities, demands, actions or proceedings related to the downloading, distribution, transmissions, storage, redistribution, reproduction or exploitation of each scanned mineral assessment report obtained by the User from Alberta Energy.

19750001

ECONOMIC MINERALS

FILE REPORT

PB-AF-010(4)

FINAL REPORT - Quartz Mineral Exploration Permit #174

Kintla Explorations Limited

Prospecting permit #174 comprises an area of 6,209 acres adjacent to the British Columbia border in southwestern Alberta. The permit lies between Hollekeke Mountain to the south and Mount Darrah in the north, and from the eastern edge of Range 5, west of the 5th Meridian to the British Columbia border.

Following a surface sampling program undertaken in 1972, 1973, and 1974 along the lead-zinc-silver molybdenum bearing black shale bed in the lower Sheppard Formation, five shallow diamond drill holes were completed on the property. These diamond drill holes are plotted on the enclosed map, and are described in the appended diamond drill logs.

Drill core and surface samples indicate that the mineralization was deposited in a lagoon of which the presently exposed N-S strike length of $7\frac{1}{2}$ miles represents a cross section. To the south of Carbon-dale forestry road (DDH: 1 and 2) and to the north of North Lost Creek the mineralized black shale bed becomes progressively thinner, more buff colored, and less well mineralized. The best mineralized section occurs in the center of the permit on the south side of South Lost Creek where the unit is 25-30 feet thick and assays at 2.8 - 3.5% Zn, 0.5 - 1.5% Pb, 0.2 - 4.5 oz/ton Ag, and 0.10 to 0.18 MoS₂. It is on this location that drill holes 3 and 4 were drilled.

Diamon drill hole #5 was drilled on North Lost Creek, and this hole shows the movement across the PreCambrian lagoon as the rocks are buff coloured with considerably lower economic mineralization.

On the basis of the field programs undertaken to date I recommend that:



1) The permit be converted to a lease comprising the following lands:

In township 5, Range 5, west of the 5th Meridian: Section 23, the northwest quarter of Section 25, the west half of Section 25, sections 26 and 35, and those portions of the north half of section 14, section 15, 22, 27, and 34 lying within the Province of Alberta;

and

in township 6, range 5, west of the 5th meridian: Sections 2 and 11 and those portions of sections 3 and 10 lying within the Province of Alberta

containing an area of approximately 5,980 acres.

This includes dropping the south half of section 14, township 5, range 5, west of the 5th meridian and the southwest quarter of section 24, township 5, range 5, west of the 5th meridian.

2) Further diamond drilling to be undertaken in the near future to test out the large (20 million tons+) dip slope lying immediately south of South Lost Creek.



E. O. Goble

DDH: 1 -

Location 150' SSW of where Purcell Lava Crosses Road to North Kootenay Pass, north of Carbondale River:

AQ core, 90° inclination, drilller - F. Goble, 2 assistants

FOOTAGE	% RECOVERY	LOG
0-7.0	-	overburden, casing required,
7.0-18.0	85%	grey-buff argillaceous siltstone - no mineralization,
18.0-27.5	80-85%	black argillaceous siltstone "Black Shale," 2.0 - 3.0% galena and sphalerite present in ground core,
27.5-28.0	0%	ground core
28.0-47.0 47.0	85%	buff shale-siltstone - no mineralization present. End of the hole.

DDH: 2 - 250' S of DDH: 1

FOOTAGE	% RECOVERY	LOG
0-1.5	-	overburden - no casing
1.5-15.0	85%	Mineralized section, however here is buff colored siltstone, estimated 2.0% combined sulfides, no sharp contact with underlying bed.
15.0-27.0	95%	Interlayered buff and black shale layers 1'-3' up to 1' thick, no mineralization
27.0		End of the hole.

DDH: 3 -

Location - immediately southeast of where mineralized outcrop crosses South Lost Creek (10' from creek).

FOOTAGE	% RECOVERY	LOG
0-1.5	-	overburden - no casing required
1.5-2.5	85-90%	grey shale - very minor mineralization
2.5-23.5	90%	"Black Shale" - black siltstone with very minor grey silty layers, well mineralized, up to 5% combined Pb-Zn sulfides, very minor jointing at 60° to hole

DDH: 3(cont.)

FOOTAGE	% RECOVERY	LOG
23.5-40.5	90%	grey siltstone with minor black silty layers. Black layers contain minor sulfides
40.5-73.0	95%	grey and black silty layers - no mineralization
73.0-74.0	-	ground core
74.0-105.0	95%	grey silty layered rock, no visible Pb or Zn sulfides, minor chalcopyrite and pyrite
105.0		END of hole.

DDH: 4 -

Location - 200' north of DDH:-3 near South Lost Creek.

FOOTAGE	% RECOVERY	LOG
0-4.5	-	Overburden casing required
4.5-12.5	90%	mineralized black shale, estimated up to 5% combined Pb-Zn sulfides, minor pyrite and chalcopyrite, possibly 0.25 to 0.50% arsenopyrite. Very little grey shale banding.
12.5-17.5	0-5%	gravel - apparently drilled through an overhand
17.5		END of hole.

DDH: 5 -

Location - where mineralized section crosses North Lost Creek.

FOOTAGE	% RECOVERY	LOG
0-2.0	-	overburden - no casing required
2.0-18.5	90%	mineralized black shale - interbedded with less well mineralized buff shale lenses increasing in frequency to 18.5 feet. Estimated sulfide content 2-3% combined Pb, Zn.
18.5-22.5	95%	Interbedded grey and black shale, combined Pb-Zn sulfides
22.5-60.0	95%	buff shale, no mineralization
60.0		END of hole.

TOTAL FOOTAGE FOR:

DDH: 1:	47.0
DDH: 2:	27.0
DDH: 3:	105.0
DDH: 4:	17.5
DDH: 5:	60.0

Total footage

416.5

NOT!

↑
256.5 feet

STATEMENT OF EXPENDITURE: PERMIT #174

Kintla Explorations Limited

July - August - September, 1974.

Dates Worked: F. Goble and 2 assistants:

July 3-10 inclusive	5 days
August 18-31 inclusive	14 days
September 1-10 inclusive	10 days
	<hr/>
TOTAL	32 days

E. Goble, Supervisor

July 3	1 day
Aug. 18, 30	2 days
Sept. 9, 10	2 days
	<hr/>
TOTAL	5 days

WAGES:

██████████ - \$175.00 per day x 32 =	\$5,600.00
2 drilling assistants - \$35.00 per day x 32 = 1)	\$1,120.00
2)	\$1,120.00
██████████ Geologist - \$275.00 per day x 5 =	<u>\$1,375.00</u>
TOTAL WAGES	= \$9,215.00
FOOD: 101 man days at \$8.00 per day	= \$ 808.00
GROUND TRANSPORTATION: 4 wheel drive chevrolet truck	
at \$475.00 per month. 475 x 32/31	= \$ 490.32
and \$.14 per mile for 3755	= \$ 525.70
DRILL RENTAL - nil - owned by Kintla Explorations	nil
DRILL BITS AND CASING SHOES - Estimated from	
previous inventory	= \$ 500.00
ASSAYING (estimate)	= \$ 250.00
TOTAL COST OF PROGRAM	<u>\$11,789.02</u>

CERTIFICATE

I, E.O. Goble, of the city of Edmonton, in the province of Alberta hereby declare:

1) That I am a member in good standing of the Association of Professional Engineers, Geologists, and Geophysicist of Alberta,

2) That I am a graduate of the University of Alberta with the degrees of Bachelor of Science, 1968, and Bachelor of Science (Geology), 1969.

3) That I hold the position of chief Geologist and President of Kintla Explorations Limited of #7-8540-109 Street, Edmonton, Alberta.

4) That I did supervise the work done in the Quartz Mineral Exploration Permit #174 in July, August, and September of 1974.

5) That the WORK AFFADAVIT accompanying this certificate is a true statement of costs incurred in this program.

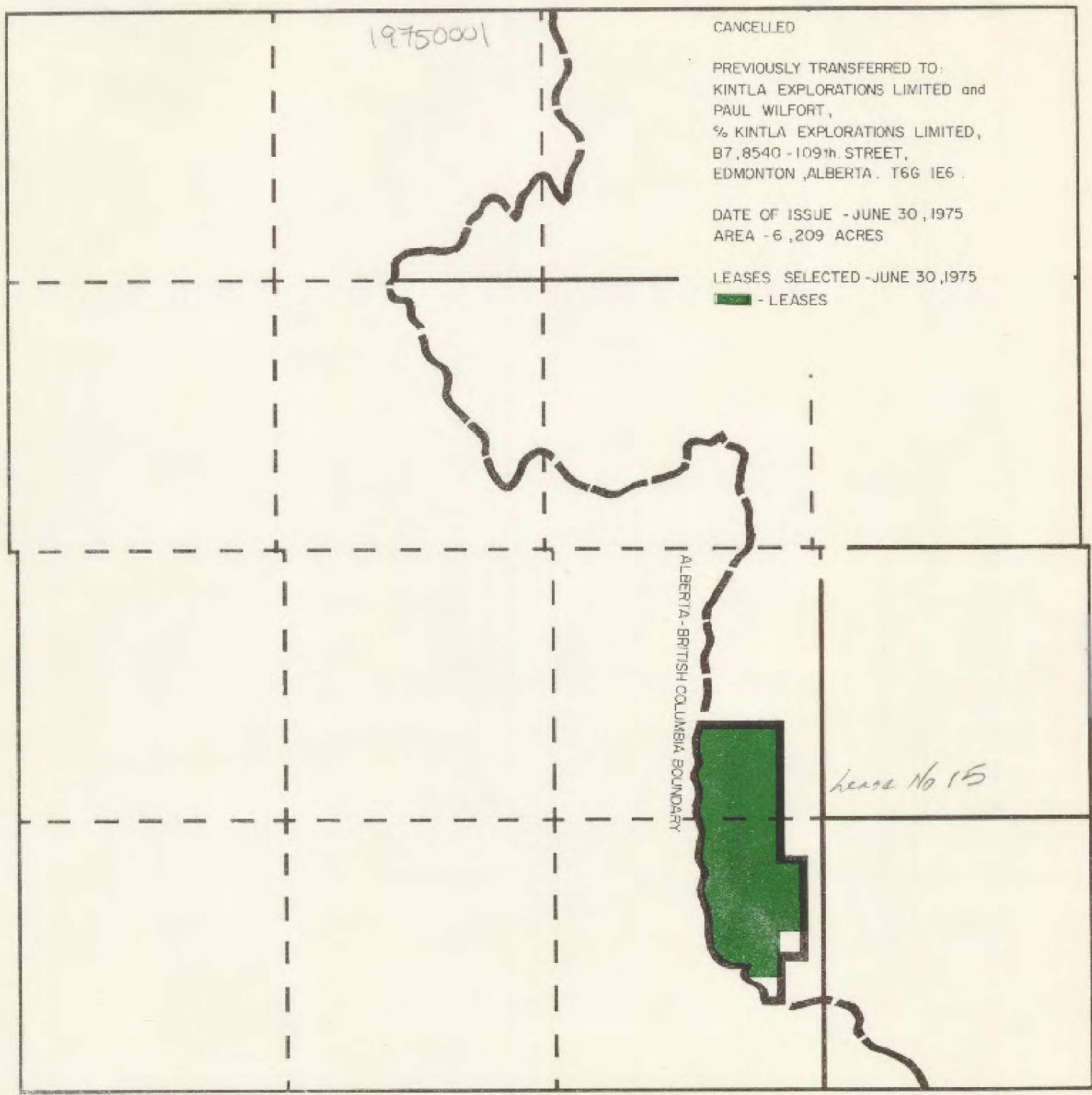
6) That the five diamond drill hole logs appended to this certificate are logs of the holes drilled on permit #174.

Submitted June 30, 1975



E. Goble, B.Sc., Professional Engineer

QUARTZ MINERAL EXPLORATION PERMIT NO.174



CANCELLED

PREVIOUSLY TRANSFERRED TO:
KINTLA EXPLORATIONS LIMITED and
PAUL WILFORT,
% KINTLA EXPLORATIONS LIMITED,
B7, 8540 - 109th STREET,
EDMONTON, ALBERTA. T6G 1E6.

DATE OF ISSUE - JUNE 30, 1975
AREA - 6,209 ACRES

LEASES SELECTED - JUNE 30, 1975
█ - LEASES

19750001

ALBERTA-BRITISH COLUMBIA BOUNDARY

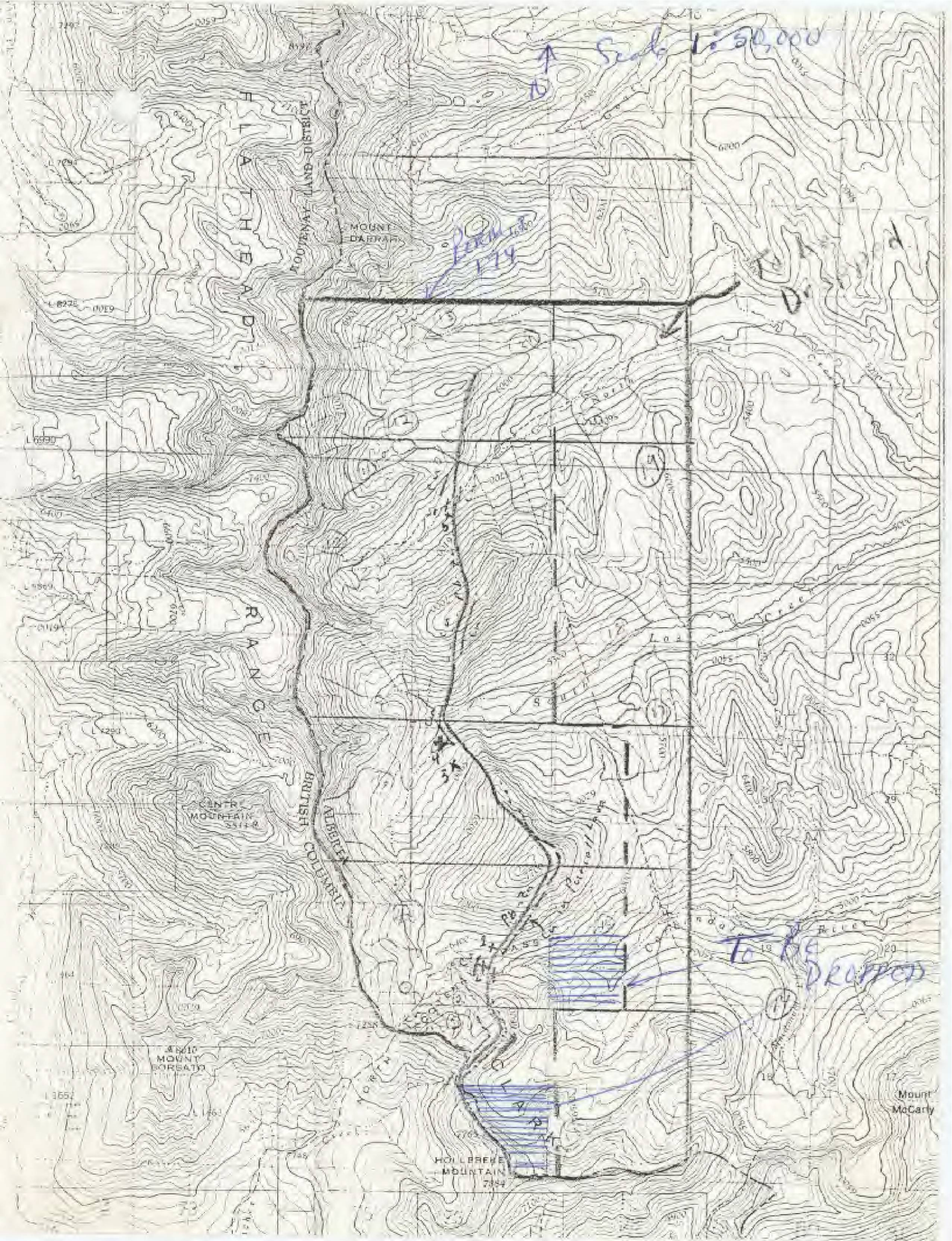
lease No 15

TP. 6

TP. 5

R. 5

R. 4 W. 5 M.



Scale 1:50,000

PERMIT
174

To be
dropped

FLATHEAD RANGE

RANGE

BRITISH COLUMBIA

ALBERTA

MOUNT DARRAGH

CENTRE MOUNTAIN
2514

4120 MOUNT BORSATO

7765
MOUNT
HOLLBREKE
MOUNTAIN
7344

Mount
McCarly