

# MAR 19740003: SAGE CREEK

Received date: Dec 31, 1974

Public release date: Jan 01, 1976

## **DISCLAIMER**

By accessing and using the Alberta Energy website to download or otherwise obtain a scanned mineral assessment report, you ("User") agree to be bound by the following terms and conditions:

- a) Each scanned mineral assessment report that is downloaded or otherwise obtained from Alberta Energy is provided "AS IS", with no warranties or representations of any kind whatsoever from Her Majesty the Queen in Right of Alberta, as represented by the Minister of Energy ("Minister"), expressed or implied, including, but not limited to, no warranties or other representations from the Minister, regarding the content, accuracy, reliability, use or results from the use of or the integrity, completeness, quality or legibility of each such scanned mineral assessment report;
- b) To the fullest extent permitted by applicable laws, the Minister hereby expressly disclaims, and is released from, liability and responsibility for all warranties and conditions, expressed or implied, in relation to each scanned mineral assessment report shown or displayed on the Alberta Energy website including but not limited to warranties as to the satisfactory quality of or the fitness of the scanned mineral assessment report for a particular purpose and warranties as to the non-infringement or other non-violation of the proprietary rights held by any third party in respect of the scanned mineral assessment report;
- c) To the fullest extent permitted by applicable law, the Minister, and the Minister's employees and agents, exclude and disclaim liability to the User for losses and damages of whatsoever nature and howsoever arising including, without limitation, any direct, indirect, special, consequential, punitive or incidental damages, loss of use, loss of data, loss caused by a virus, loss of income or profit, claims of third parties, even if Alberta Energy have been advised of the possibility of such damages or losses, arising out of or in connection with the use of the Alberta Energy website, including the accessing or downloading of the scanned mineral assessment report and the use for any purpose of the scanned mineral assessment report so downloaded or retrieved.
- d) User agrees to indemnify and hold harmless the Minister, and the Minister's employees and agents against and from any and all third party claims, losses, liabilities, demands, actions or proceedings related to the downloading, distribution, transmissions, storage, redistribution, reproduction or exploitation of each scanned mineral assessment report obtained by the User from Alberta Energy.

Quartz Mineral Exploration Permit No. 177

Prospecting permit # 177 was taken out in April 1973 following the discovery of Au - Ag and Cu - Pb - Zn mineralization in similar rocks approximately five miles southwest of the permit area in British Columbia. In that location syenitic and dioritic intrusives cutting the Siyeh, Purcell Lava, Sheppard and Gateway formations had been found to be enriched in disseminated Au and Ag, and to a lesser economic extent, Cu - Pb - Zn.

Prospecting and sampling was undertaken on the permit in the summer and fall of 1973. Two areas of economic interest were located which are outlined on the attached map. Area 1, <sup>no</sup> cross-hatched in red indicates an exposure of syenitic and dioritic intrusives grading to the southwest into more mafic amphibolitic intrusives. Samples from this area show an enrichment in gold and silver values corresponding inversely to the mafic content of the intrusive. Assay on these intrusives show from \$1.50 gold in the more mafic units to \$3.20 gold in the syenitic units. <sup>0.0097 oz/ton</sup> (0.331 g Au/t) <sup>0.0206 oz/ton</sup> (0.706 g Au/t)

Prices: 1974 (Source: 1990 Canadian Minerals Yearbook)

Au price: \$155.36/oz (average for year)  
 Ag price: \$4.595/oz (average for year) P. 1

Silver values are also related to mafic content, with syenitic units containing up to \$4.38 of silver in the same samples that show the Au enrichment, for a value of \$7.58 per ton for these samples. As can be seen from the map, the intrusions constitute a considerable area and additional prospecting must be carried out in this area to determine the exact extent of the enriched intrusives, but on the basis of the 1973 field work they appear sufficiently widespread and well mineralized to warrant further work. This is particularly the case as the majority of the intrusives encountered to date appear open pitable and current break even costs for open pit mining in southern Canada (in 1972) are from \$4.00 to \$6.00 per ton, depending on tonnage. This can go as low as \$1.50 per ton (Gibraltar Mines, April 1973 figure) on extremely large tonnage deposits.

The second area of interest is the "Phillips bed", a copper bearing siltstone in the middle portion of the Phillips formation. The outcrop of this unit is marked in black on the attached map. This unit was found to contain sedimentary bornite - chalcocite - covellite mineralization immediately south of the permit area in British Columbia and similar mineral-

P.1 2

ization has been located on the permit area by the 1973 field program. Samples of the bed, varying from 4½ to 8 feet thick carry from 0.38% Cu (Lys ridge on the northern portion of the permit) to 0.68 and 0.75% Cu near the head of Grizzly Creek and locally to 1.6% copper near the British Columbia - Alberta border. The mineralization varies from bornite - covellite - chalcocite in the south to chalcopyrite - pyrite and minor bornite to the north. These values are from \$5.32 per ton (0.38%) to \$22.40 per ton (1.6% copper) with minor values of silver. The east - west parameters of the sedimentary layer are constant, with 0.68 to 0.9% copper present as bornite and chalcocite at the head of Yarrow Creek (two miles east of the permit) and bornite - covellite - chalcocite on the western edge of the permit.

The permit contains two definite areas of interest which warrant further work. The Au - Ag area is most easily prospected and should be looked at first in 1974. A statement of the expenses incurred on the property in 1973 is attached.

P. H. 3

Wages -

Geologist - 7 days at \$100.00 = 700.00  
Prospector - 7 days at \$ 75.00 = 525.00  
Assistant - 7 days at \$ 50.00 = 350.00

Truck Rental ( 475/mo ) -

7/30 x 475 = 110.81  
325 miles at 14¢ = 45.50

Assaying - = 135.00

Meals -

7 x 10 x 3 = 210.00

Accommodation -


7 x 18 = 126.00

Total - 

---

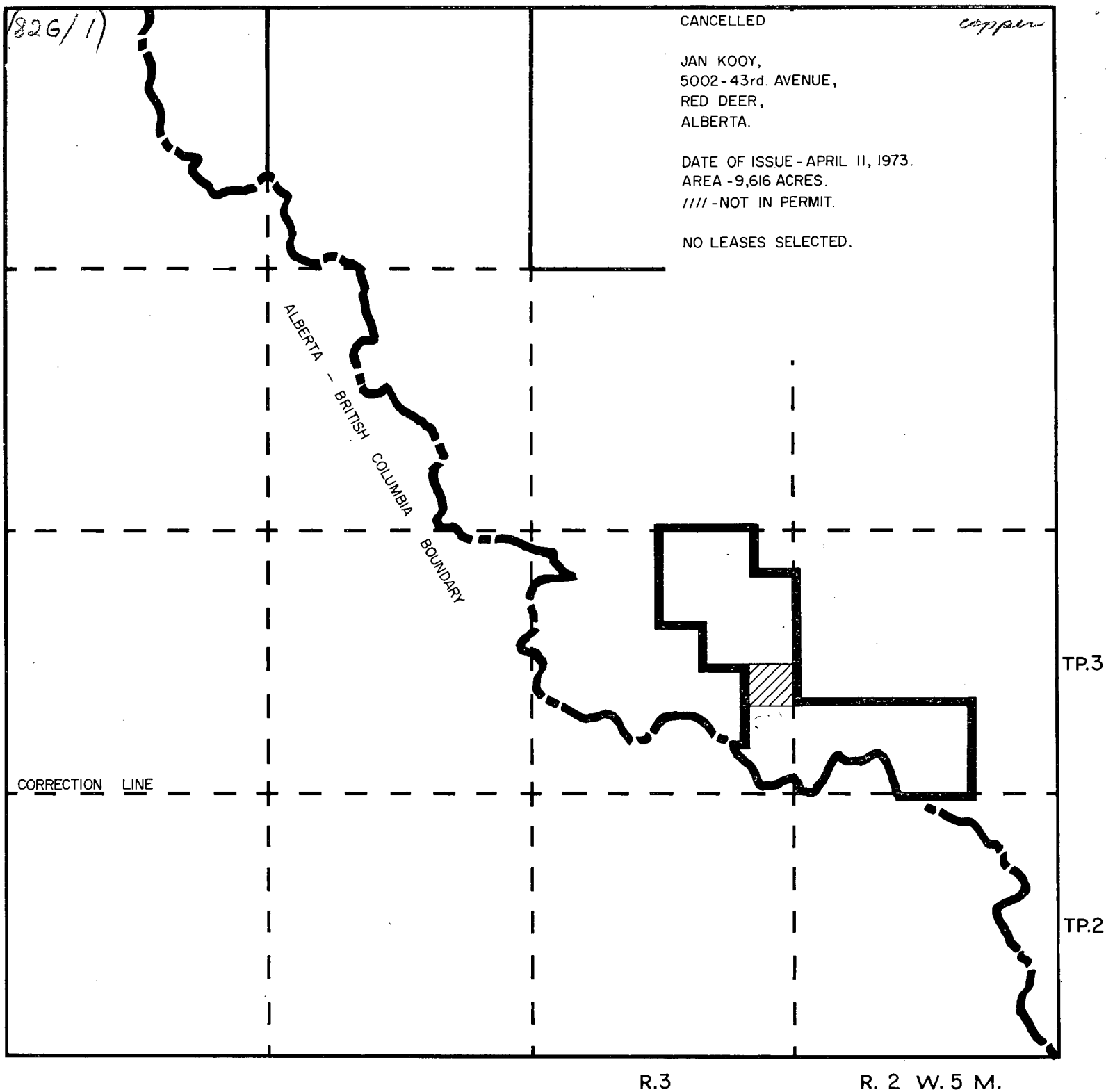
\$2202.31

Submitted April 3, 1974

  
Eric Soble, B.Sc.  
Consultant

P. H. 7

# QUARTZ MINERAL EXPLORATION PERMIT No. 177

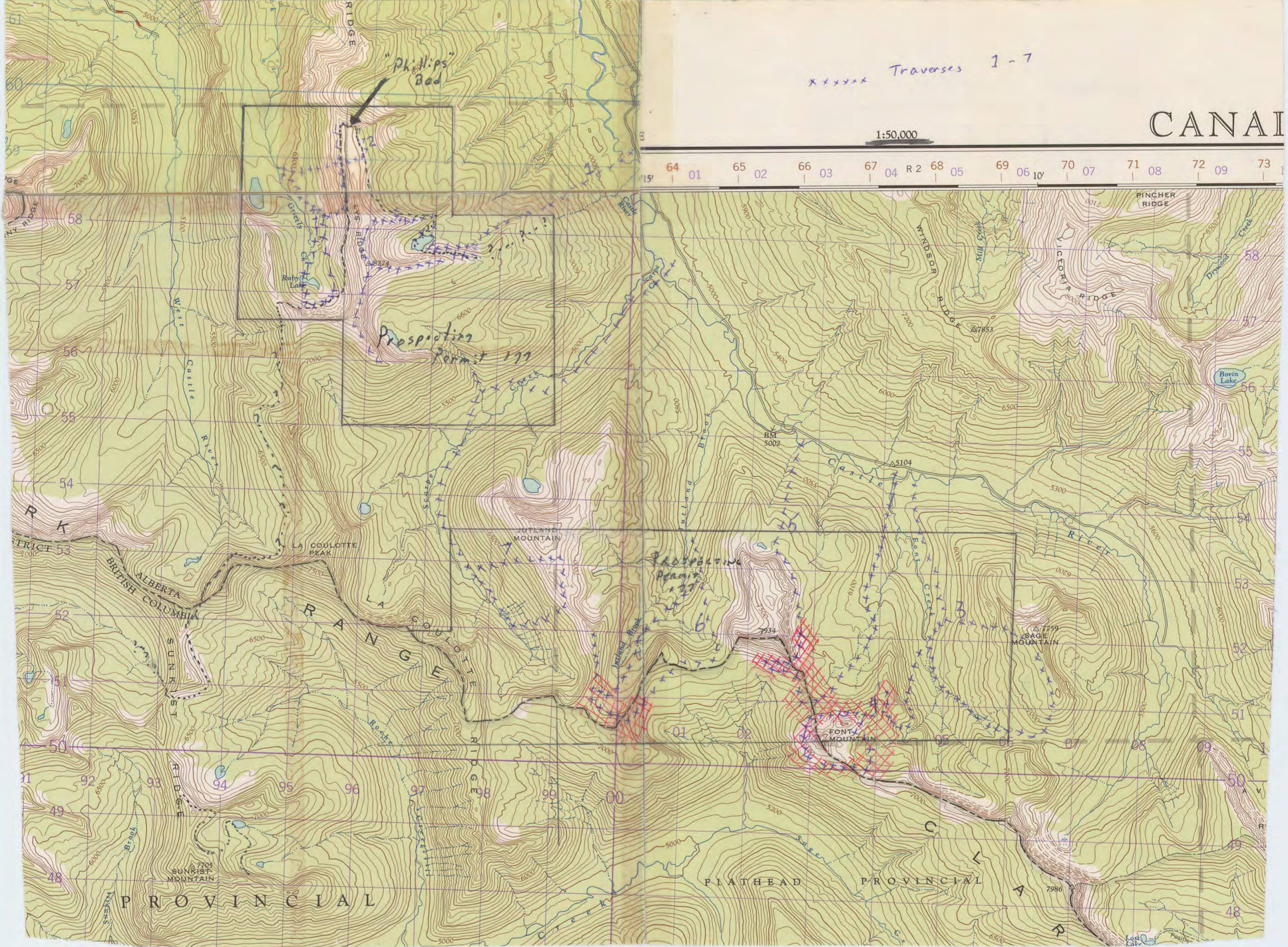


xxxxx Traverses 1-7

1:50,000

CANAI

64 01 65 02 66 03 67 04 R2 68 05 69 06 10' 70 07 71 08 72 09 73



"Phillips"  
Bed

Prospecting  
Permit 177

Prospecting  
Permit 177

Font  
Mountain

FLATHEAD PROVINCIAL  
PARK

FLATHEAD PROVINCIAL  
PARK

ALBERTA  
BRITISH COLUMBIA

LA COULOTTE  
RANGE

Lost Lake  
Positivity