

MAR 19720006: BIGHORN

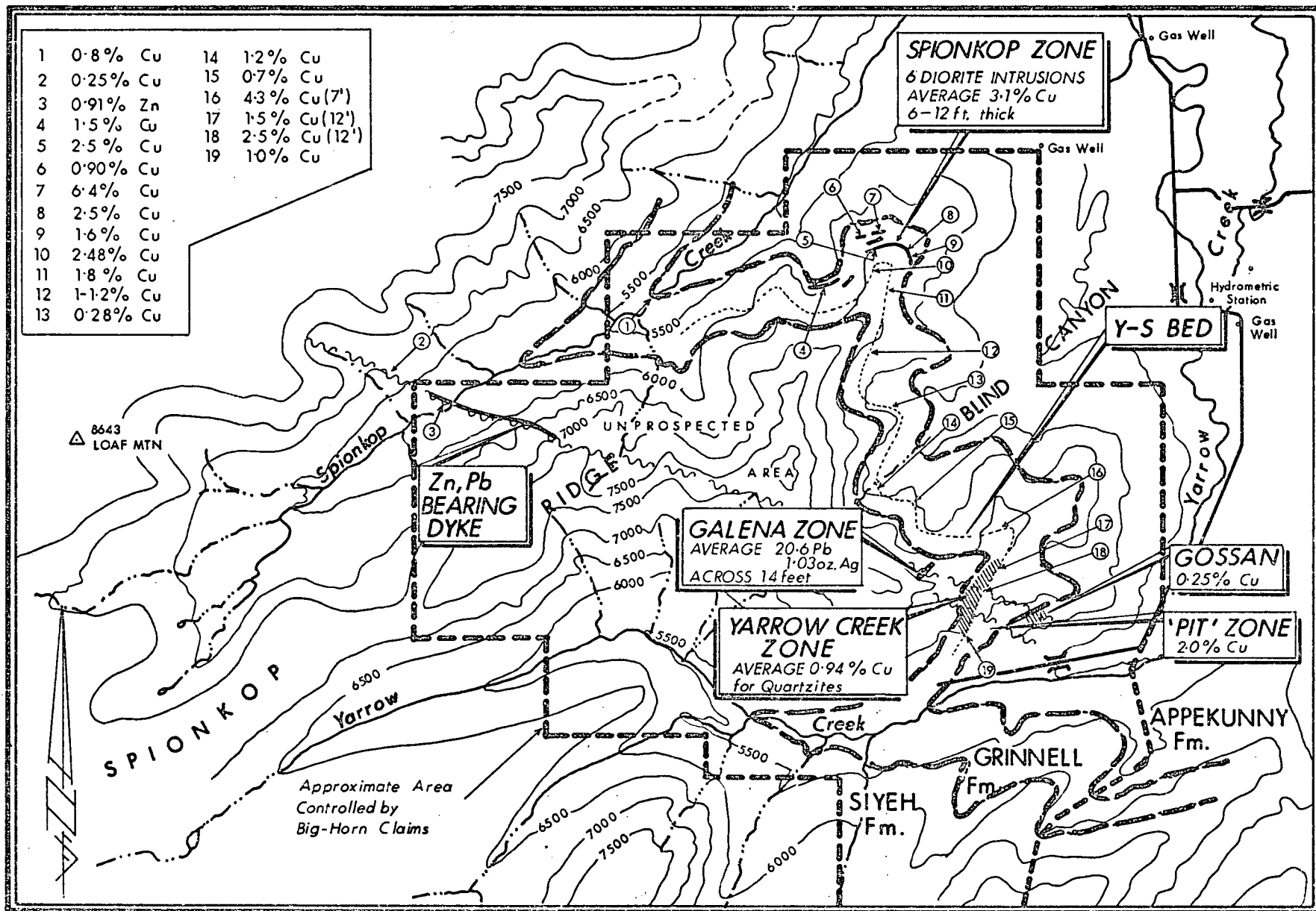
Received date: Dec 31, 1972

Public release date: Jan 01, 1974

DISCLAIMER

By accessing and using the Alberta Energy website to download or otherwise obtain a scanned mineral assessment report, you ("User") agree to be bound by the following terms and conditions:

- a) Each scanned mineral assessment report that is downloaded or otherwise obtained from Alberta Energy is provided "AS IS", with no warranties or representations of any kind whatsoever from Her Majesty the Queen in Right of Alberta, as represented by the Minister of Energy ("Minister"), expressed or implied, including, but not limited to, no warranties or other representations from the Minister, regarding the content, accuracy, reliability, use or results from the use of or the integrity, completeness, quality or legibility of each such scanned mineral assessment report;
- b) To the fullest extent permitted by applicable laws, the Minister hereby expressly disclaims, and is released from, liability and responsibility for all warranties and conditions, expressed or implied, in relation to each scanned mineral assessment report shown or displayed on the Alberta Energy website including but not limited to warranties as to the satisfactory quality of or the fitness of the scanned mineral assessment report for a particular purpose and warranties as to the non-infringement or other non-violation of the proprietary rights held by any third party in respect of the scanned mineral assessment report;
- c) To the fullest extent permitted by applicable law, the Minister, and the Minister's employees and agents, exclude and disclaim liability to the User for losses and damages of whatsoever nature and howsoever arising including, without limitation, any direct, indirect, special, consequential, punitive or incidental damages, loss of use, loss of data, loss caused by a virus, loss of income or profit, claims of third parties, even if Alberta Energy have been advised of the possibility of such damages or losses, arising out of or in connection with the use of the Alberta Energy website, including the accessing or downloading of the scanned mineral assessment report and the use for any purpose of the scanned mineral assessment report so downloaded or retrieved.
- d) User agrees to indemnify and hold harmless the Minister, and the Minister's employees and agents against and from any and all third party claims, losses, liabilities, demands, actions or proceedings related to the downloading, distribution, transmissions, storage, redistribution, reproduction or exploitation of each scanned mineral assessment report obtained by the User from Alberta Energy.



SCALE 0 1 2 MILES

E. Goble July, 1972.

KINTLA EXPLORATIONS LTD
ZONES OF MINERALIZATION
BIG-HORN CLAIMS

(MAP #1)

19720006

MAP 6

HULLA EXPLORATIONS LIMITED

Tonnages:

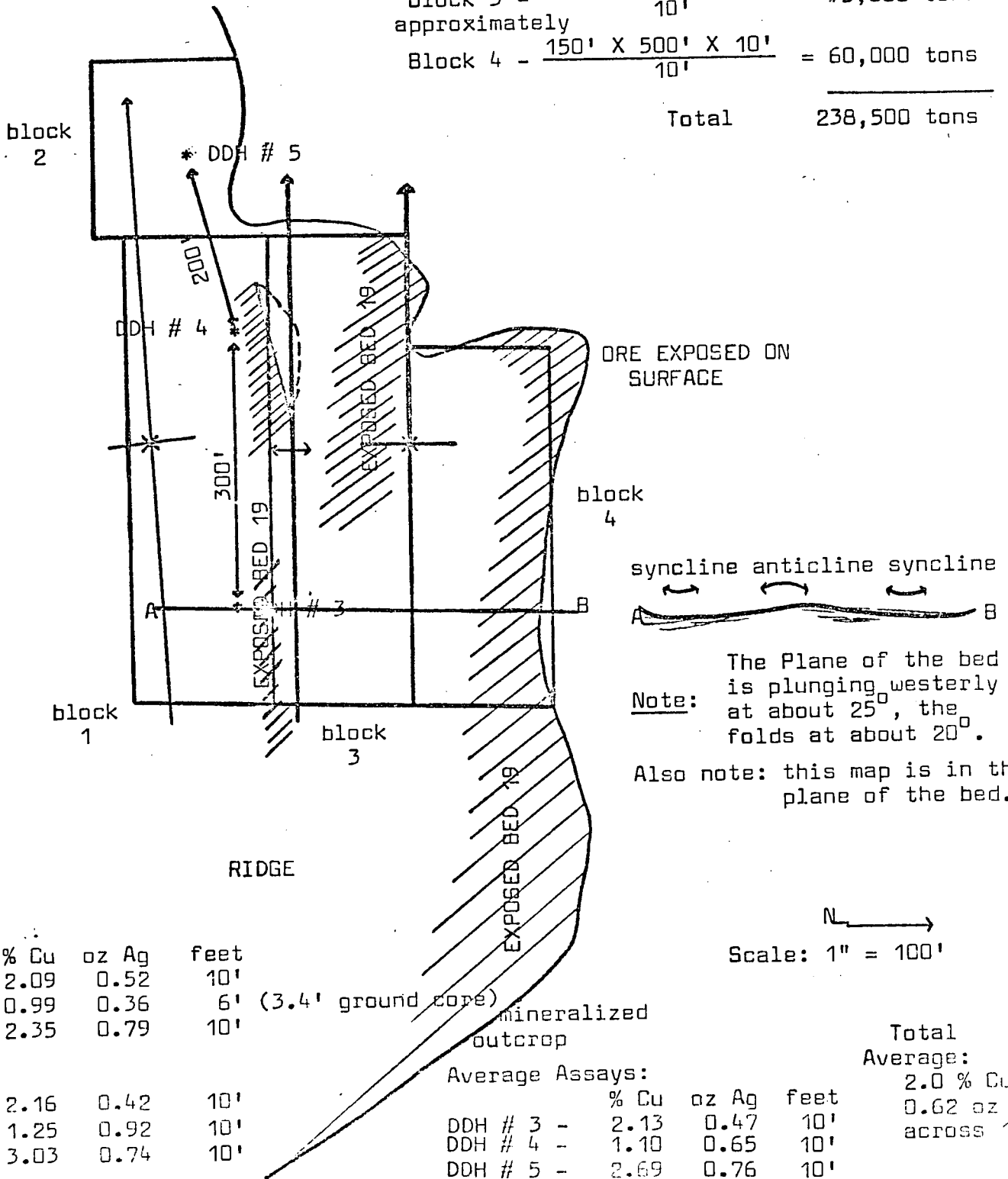
Block 1 - $\frac{150' \times 500' \times 10'}{10'}$ = 75,000 tons

Block 2 - $\frac{190' \times 150' \times 10'}{10'}$ = 28,500 tons

Block 3 - $\frac{150' \times 500' \times 10'}{10'}$ = 75,000 tons approximately

Block 4 - $\frac{150' \times 500' \times 10'}{10'}$ = 60,000 tons

Total 238,500 tons



Assays:

	% Cu	oz Ag	feet
DDH # 3 -	2.09	0.52	10'
DDH # 4 -	0.99	0.36	6' (3.4' ground core)
DDH # 5 -	2.35	0.79	10'

Face:

	% Cu	oz Ag	feet
DDH # 3 -	2.16	0.42	10'
DDH # 4 -	1.25	0.92	10'
DDH # 5 -	3.03	0.74	10'

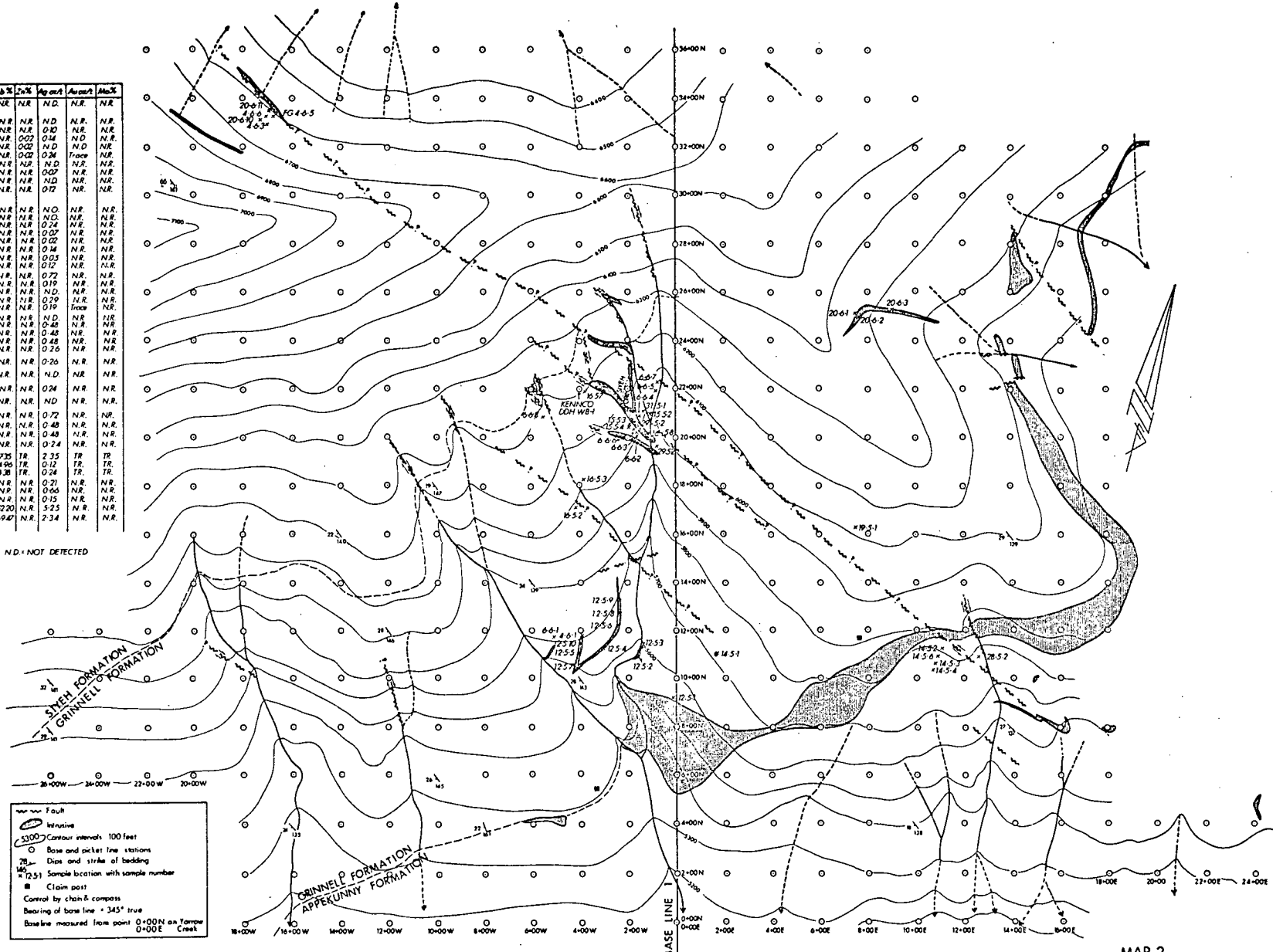
Average Assays:

	% Cu	oz Ag	feet
DDH # 3 -	2.13	0.47	10'
DDH # 4 -	1.10	0.65	10'
DDH # 5 -	2.69	0.76	10'

Total Average:
2.0 % Cu
0.62 oz Ag
across 10'

Sample	Thick	Gr%	Pb%	Zn%	Ag cont	Au cont	Mo%
401	0'	1.20	NR	NR	ND	NR	NR
1252	10'	0.28	NR	NR	ND	NR	NR
1253	12'	0.07	NR	NR	ND	NR	NR
1254	12'	1.30	NR	0.02	0.14	ND	NR
1255	7'	0.42	NR	0.02	ND	ND	NR
1256	12'	1.26	NR	0.02	0.24	Trace	NR
1257	12'	0.97	NR	NR	ND	NR	NR
1258	12'	0.52	NR	NR	0.07	NR	NR
1259	7'	0.09	NR	NR	ND	NR	NR
1260	10'	0.94	NR	NR	0.12	NR	NR
M52		0.15	NR	NR	ND	NR	NR
M52#1		0.03	NR	NR	ND	NR	NR
M52#2		0.11	NR	NR	0.24	NR	NR
M52#3		0.29	NR	NR	0.02	NR	NR
M52#4		0.51	NR	NR	0.02	NR	NR
M52#5		0.52	NR	NR	0.14	NR	NR
M52#6		0.76	NR	NR	0.03	NR	NR
M53	10'	0.21	NR	NR	0.12	NR	NR
605	7'	1.20	NR	NR	0.72	NR	NR
1451	8'	1.04	NR	NR	0.19	NR	NR
1552	8'	0.84	NR	NR	ND	NR	NR
1553	6'	1.08	NR	NR	0.19	NR	NR
1554	4'	0.09	NR	NR	0.19	Trace	NR
1652	7'	0.55	NR	NR	ND	NR	NR
1653	10'	0.91	NR	NR	0.48	NR	NR
1657	10'	1.76	NR	NR	0.48	NR	NR
1658	8'	0.45	NR	NR	0.25	NR	NR
1659	12'	0.49	NR	NR	0.26	NR	NR
2852	16'	0.11	NR	NR	ND	NR	NR
2952	9'	1.39	NR	NR	0.24	NR	NR
3151	20'	0.54	NR	NR	ND	NR	NR
601	10'	0.86	NR	NR	0.72	NR	NR
602	7'	1.84	NR	NR	0.48	NR	NR
603	6'	0.65	NR	NR	0.48	NR	NR
604	10'	0.82	NR	NR	0.24	NR	NR
400	4'	0.07	5235	TR	2.35	TR	TR
402	10'	0.05	490	TR	0.12	TR	TR
403	5'	0.02	328	TR	0.21	TR	TR
2061	1'	0.09	NR	NR	0.21	NR	NR
2062	5'	4.80	NR	NR	0.66	NR	NR
2067	5'	1.03	NR	NR	0.15	NR	NR
2068	4'	1.1	NR	NR	5.25	NR	NR
20611	4'	NR	0.92	NR	2.34	NR	NR

NR=NOT REQUIRED, ND=NOT DETECTED
TR=TRACE

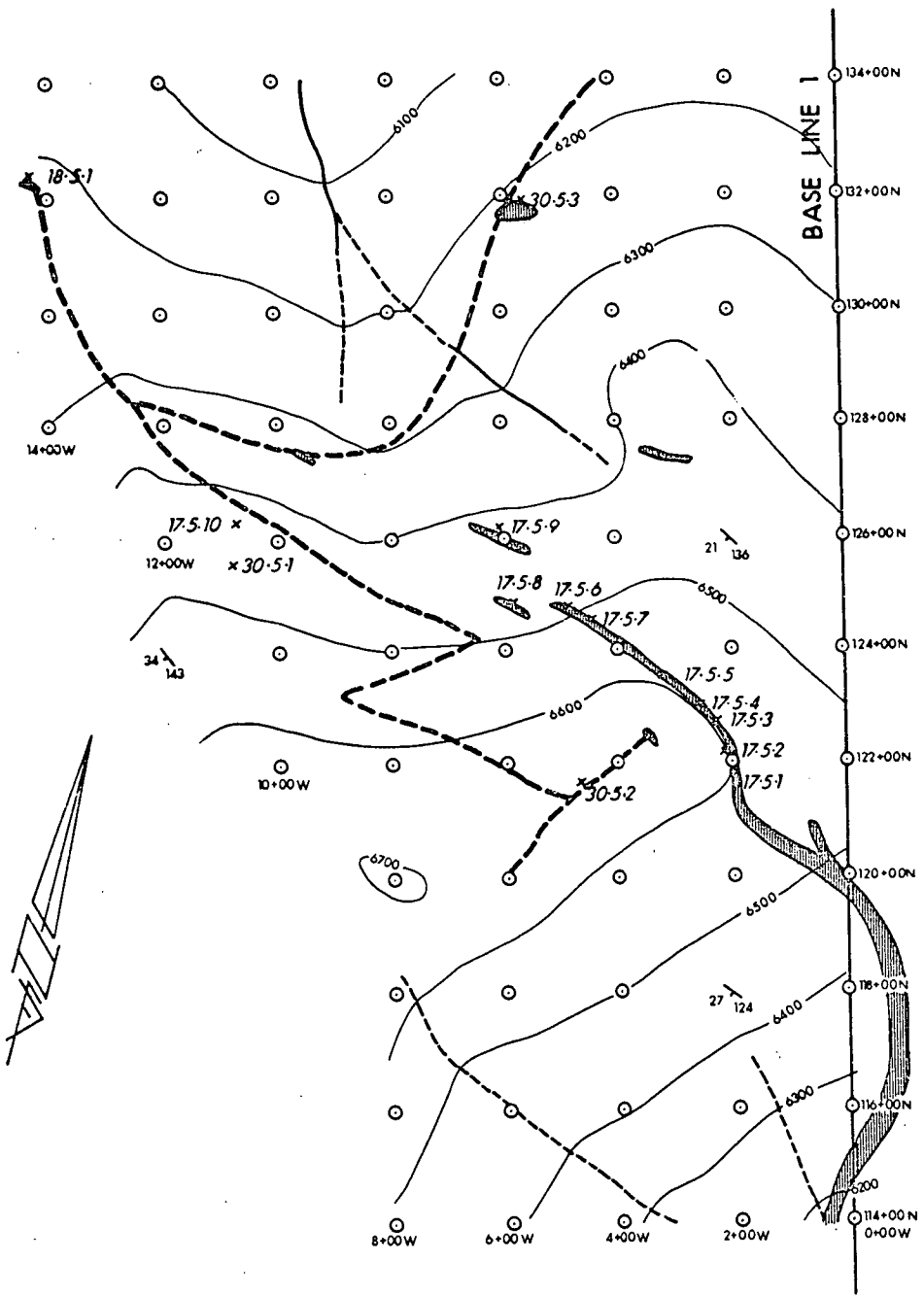


Fault
 Intrusive
 5000 Contour interval 100 feet
 Base and picket line stations
 Dip and strike of bedding
 Sample location with sample number
 Claim post
 Control by chain & compass
 Bearing of base line = 345° true
 Base line measured from point 0+00N on Yarrow 0+00E Creek

© SHELL WATERLOO NO.

MAP 2.
 KINTLA EXPLORATIONS LTD.
 SAMPLE LOCATION MAP
 ZONE 1
 Big Horn-Claims - Yarrow Creek Area
 SW-Alberta
 SCALE 0 200 400 FEET
 R.Gobbie June 1972

19720006

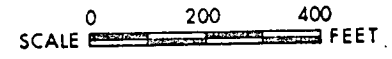


Sample	Thick.	Cu %	Zn %	Au oz/t	Ag oz/t
17-5-1	7'	2.52	N.R.	N.R.	0.02
17-5-2	30'	2.32	N.R.	N.R.	0.10
17-5-3	2'	6.48	N.R.	N.R.	N.D.
17-5-4	6'	2.44	N.R.	N.R.	N.D.
17-5-5	7'	1.88	N.R.	N.R.	N.D.
17-5-6	4'	2.68	N.R.	N.R.	0.22
17-5-7	9'	2.36	N.R.	N.R.	0.10
17-5-8	5'	1.60	N.R.	N.R.	0.07
17-5-9	8'	0.90	N.R.	N.R.	0.12
17-5-10	8'	2.48	N.R.	N.R.	0.12
18-5-1	5'	0.32	N.R.	N.R.	N.D.
30-5-1	8'	0.86	N.R.	N.R.	0.12
30-5-2	7'	1.78	N.R.	N.R.	0.24
30-5-3	10'	0.62	N.R.	N.R.	N.D.

N.R. = NOT REQUIRED
 N.D. = NOT DETECTED

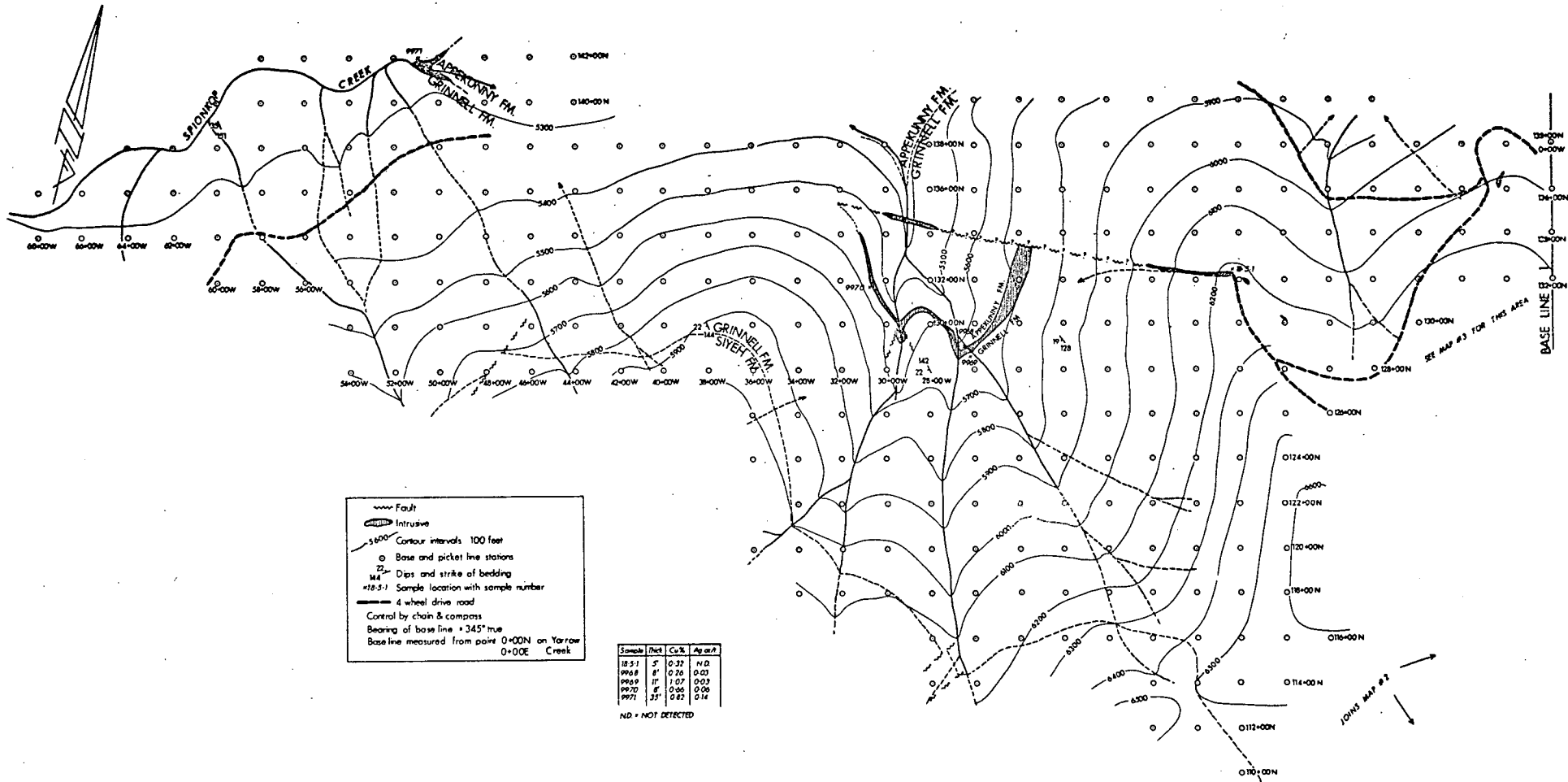
Intrusive
 Contour intervals 100 ft.
 Base and picket line stations
 Dips and strike of bedding
 Sample location with sample number
 4 wheel drive road
 Control by chain & compass
 Bearing of base line = 345° true
 Base line measured from point 0+00N on Yarrow
 0+00E Creek

MAP 3.
 KINTLA EXPLORATIONS LTD.
 SAMPLE LOCATION MAP
 ZONE 2
 Big Horn - Claims — Spionkop Ridge Area
 SW.-Alberta



R. Goble — June 1972

19720006



MAP 4.
KINTLA EXPLORATIONS LTD.
 SAMPLE LOCATION MAP
 ZONE 2
 Big Horn-Claims — Spionkop Creek Area
 SW-Alberta

SCALE 0 200 400 FEET
 R. Goble - July, 1972

19720506