

# MAR 19700025: BIG VALLEY

Received date: Dec 31, 1970

Public release date: Jan 01, 1972

## **DISCLAIMER**

By accessing and using the Alberta Energy website to download or otherwise obtain a scanned mineral assessment report, you ("User") agree to be bound by the following terms and conditions:

- a) Each scanned mineral assessment report that is downloaded or otherwise obtained from Alberta Energy is provided "AS IS", with no warranties or representations of any kind whatsoever from Her Majesty the Queen in Right of Alberta, as represented by the Minister of Energy ("Minister"), expressed or implied, including, but not limited to, no warranties or other representations from the Minister, regarding the content, accuracy, reliability, use or results from the use of or the integrity, completeness, quality or legibility of each such scanned mineral assessment report;
- b) To the fullest extent permitted by applicable laws, the Minister hereby expressly disclaims, and is released from, liability and responsibility for all warranties and conditions, expressed or implied, in relation to each scanned mineral assessment report shown or displayed on the Alberta Energy website including but not limited to warranties as to the satisfactory quality of or the fitness of the scanned mineral assessment report for a particular purpose and warranties as to the non-infringement or other non-violation of the proprietary rights held by any third party in respect of the scanned mineral assessment report;
- c) To the fullest extent permitted by applicable law, the Minister, and the Minister's employees and agents, exclude and disclaim liability to the User for losses and damages of whatsoever nature and howsoever arising including, without limitation, any direct, indirect, special, consequential, punitive or incidental damages, loss of use, loss of data, loss caused by a virus, loss of income or profit, claims of third parties, even if Alberta Energy have been advised of the possibility of such damages or losses, arising out of or in connection with the use of the Alberta Energy website, including the accessing or downloading of the scanned mineral assessment report and the use for any purpose of the scanned mineral assessment report so downloaded or retrieved.
- d) User agrees to indemnify and hold harmless the Minister, and the Minister's employees and agents against and from any and all third party claims, losses, liabilities, demands, actions or proceedings related to the downloading, distribution, transmissions, storage, redistribution, reproduction or exploitation of each scanned mineral assessment report obtained by the User from Alberta Energy.



ASSAYERS  
CHEMISTS  
GEOCHEMISTS



21

ECONOMIC MINERALS

FILE REPORT No.

PB-AF-008(2)

# CORE LABORATORIES - CANADA LTD.

P. O. Box 5670, Postal Station "A" Calgary 9, Alberta Phone 253 - 3391

## Certificate of Analysis

REPORT NO.

CAL-2-2084

Sample(s) from Big Valley Group

Date: May 11, 1970

Attention: Mr. B. Scheuchner

SAMPLE NO.	GOLD Troy ounces per ton	SILVER Troy ounces per ton	LEAD % Pb	ZINC % Zn	COLUMBUM % Co	% Ca
Rock Sample			0.02	0.01	0.012	0.08

PULPS RETAINED 3 MONTHS  
REJECTS RETAINED 1 MONTH

SIGNED \_\_\_\_\_



ASSAYERS  
CHEMISTS  
GEOCHEMISTS



P  
**CORE LABORATORIES - CANADA LTD.**

P. O. Box 5670, Postal Station "A" Calgary 9, Alberta Phone 253 - 3391

# Certificate of Analysis

Sample(s) from Big Valley Group

Date: May 11, 1970


REPORT NO.

CAL-2-2084

Attention: Mr. B. Schuechner

SAMPLE NO.	GOLD Troy ounces per ton	SILVER Troy ounces per ton	MAGNESIUM % Mg	% Sn	% Ti	% Mo
Rock Sample			0.75	ND	ND	ND
		ND - Not Detected				

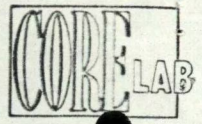
PULPS RETAINED 3 MONTHS  
REJECTS RETAINED 1 MONTH

SIGNED 



ASSAYERS  
CHEMISTS  
GEOCHEMISTS

1 P NORM



# CORE LABORATORIES - CANADA LTD.

P. O. Box 5670, Postal Station "A" Calgary 9, Alberta Phone 253-3391

## Certificate of Analysis

Sample(s) from Big Valley Group  
Date: May 11, 1970

Attention: Mr. B. Scheuchner

REPORT NO.  
CAL-2-2084

SAMPLE NO.	GOLD Troy ounces per ton	SILVER Troy ounces per ton	COPPER % Cu	NICKEL % Ni	IRON % Fe	CHROMIUM % Cr
Rock Sample		ND	2.62	0.03	5.01	0.04

ND - Not Detected

Poor Quality  
Original

PULPS RETAINED 3 MONTHS  
REJECTS RETAINED 1 MONTH

SIGNED [Redacted]



ASSAYERS  
CHEMISTS  
GEOCHEMISTS



ECONOMIC MINERALS  
FILE REPORT No.  
*PB-AF-008(2)*

# CORE LABORATORIES - CANADA LTD.

P. O. Box 5670, Postal Station "A" Calgary 9, Alberta Phone 253 - 3391

## Certificate of Analysis

Sample(s) from *Big Valley Group*  
Date: *May 11, 1970*

REPORT NO.  
*CAL-2-2084*

Attention: Mr. B. Scheuchner

SAMPLE NO.	GOLD Troy ounces per ton	SILVER Troy ounces per ton	LEAD % Pb	ZINC % Zn	COLUMBIUM % Co	% Ca
Rock Sample			0.02	0.01	0.012	0.08

PULPS RETAINED 3 MONTHS  
REJECTS RETAINED 1 MONTH

SIGNED 



ASSAYERS  
CHEMISTS  
GEOCHEMISTS

1 P NORM



# CORE LABORATORIES - CANADA LTD.

P. O. Box 5670, Postal Station "A" Calgary 9, Alberta P. O. Box 243  
253 - 3391

## Certificate of Analysis

Sample(s) from Big Valley Group

Date: May 11, 1970

Attention: Mr. B. Scheuchner

REPORT NO.

CAL-2-2084

SAMPLE NO.	GOLD Troy ounces per ton	SILVER Troy ounces per ton	COPPER % Cu	NI % Ni	IRON % Fe	CHROMIUM % Cr
Rock Sample		ND	2.62	0.03	5.01	0.04

ND - Not Detected

Poor Quality  
Original

PULPS RETAINED 3 MONTHS  
REJECTS RETAINED 1 MONTH

SIGNED



CHEMISTS  
GEOCHEMISTS

P



# CORE LABORATORIES - CANADA LTD.

P. O. Box 5670, Postal Station "A" Calgary 9, Alberta Phone 253-3391

## Certificate of Analysis

Sample(s) from Big Valley Group

Date: May 11, 1970

REPORT NO.

CAL-2-2084

Attention: Mr. B. Schuechner

SAMPLE NO.	GOLD Troy ounces per ton	SILVER Troy ounces per ton	MAGNESIUM % Mg	% Sn	% Ti	% Mo
Rock Sample			0.75	ND	ND	ND
		ND - Not Detected				

PULPS RETAINED 3 MONTHS  
REJECTS RETAINED 1 MONTH

SIGNED



# QUARTZ MINERAL EXPLORATION PERMIT No.155

(82J/2)

*Cancelled*

NORMAN CLIFFORD GILLIS,  
1998 - COTTON WOOD CRESCENT, SE.  
CALGARY 2, ALBERTA

DATE OF ISSUE - MAY 12, 1970  
AREA - 9,947 ACRES

*No leases selected.*

BOUNDARY  
COLUMBIA  
BRITISH  
ALBERTA -

TP. 14

TP. 13

TP. 12

R. 6

R. 5 W. 5 M.



# QUARTZ MINERAL EXPLORATION PERMIT No. 157

(82J/1)

*Cancelled*

NORMAN CLIFFORD GILLIS,  
1998 COTTONWOOD CRESCENT S.E.,  
CALGARY 22, ALBERTA

DATE OF ISSUE - JUNE 1, 1970

AREA - 9,440 ACRES

//// - NOT IN PERMIT

*No leases selected.*

BRITISH COLUMBIA - ALBERTA BOUNDARY

TP. 14

TP. 13

TP. 12

R. 4

R. 3

R. 2 W. 5 M.





# CROWSNEST FOREST

ROCKY MOUNTAINS FOREST RESERVE

DEPARTMENT OF LANDS & FORESTS

Cartography by the Aerial Survey Section  
Technical Division

HON. A. J. HOOKE Minister  
V. A. WOOD Deputy Minister

Scale: One Inch Equals Three Miles

### LEGEND

- Highway
- Forestry Trunk Road
- District Road (All Weather)
- Secondary Road (Dry Weather)
- Trails and Seismograph Lines (Condition Unknown)
- Railways
- Bridge, Overpass, Underpass
- Mountain Pass
- Airstrip
- Town
- Village, Hamlet, Post Office, Locality
- Provincial Park
- Intermittent Stream
- River
- Braided Stream
- Falls
- Dam
- Glacier
- Township Boundary, Surveyed
- Township Boundary, Unsurveyed
- Section Line
- Campsite
- Ranger Cabin
- Ranger Station
- Lookout
- Lookout Tower
- Mountain Peaks
- Gravel Pits, Mines, Quarries
- Historical Site
- Conservation Area Boundary
- Microwave Tower

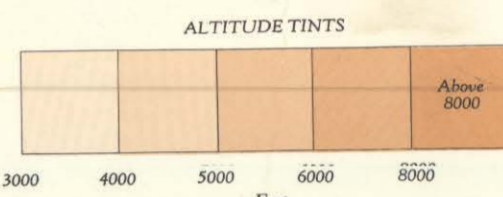
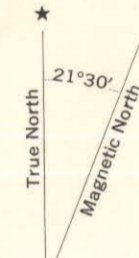


DIAGRAM OF TOWNSHIP SHOWING SECTION NUMBERING

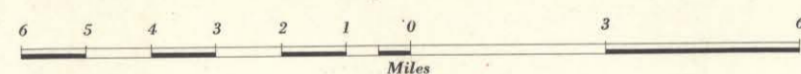
31	32	33	34	35	36
30	29	28	27	26	25
19	20	21	22	23	24
18	17	16	15	14	13
7	8	9	10	11	12
6	5	4	3	2	1



Approximate Magnetic Declination 1962

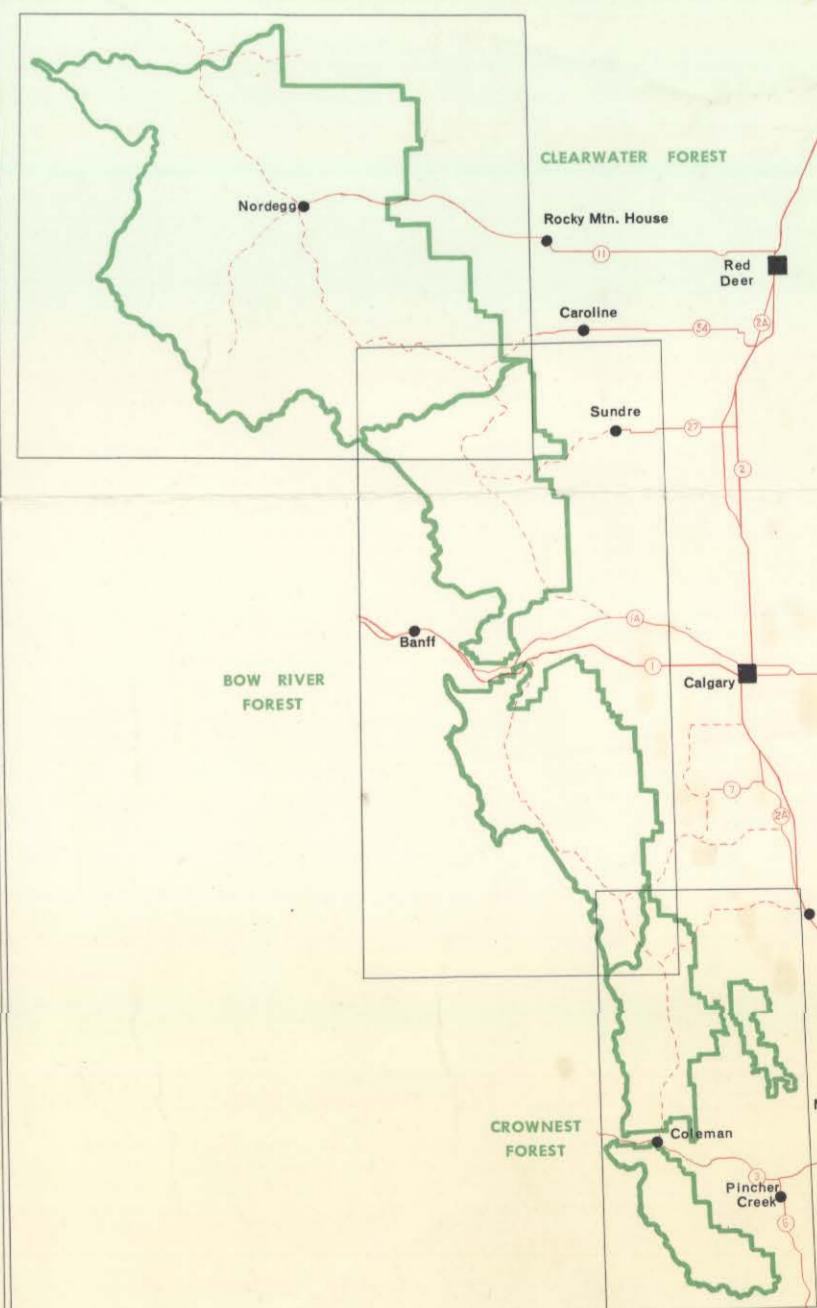
The Average Declination Taken at the Centre of the Map, Approximate Centre of Tp. 10, Rg. 2, W. 5 Meridian is 21° 30' East, With an Annual Decrease of 4' West.

Graphic Scale



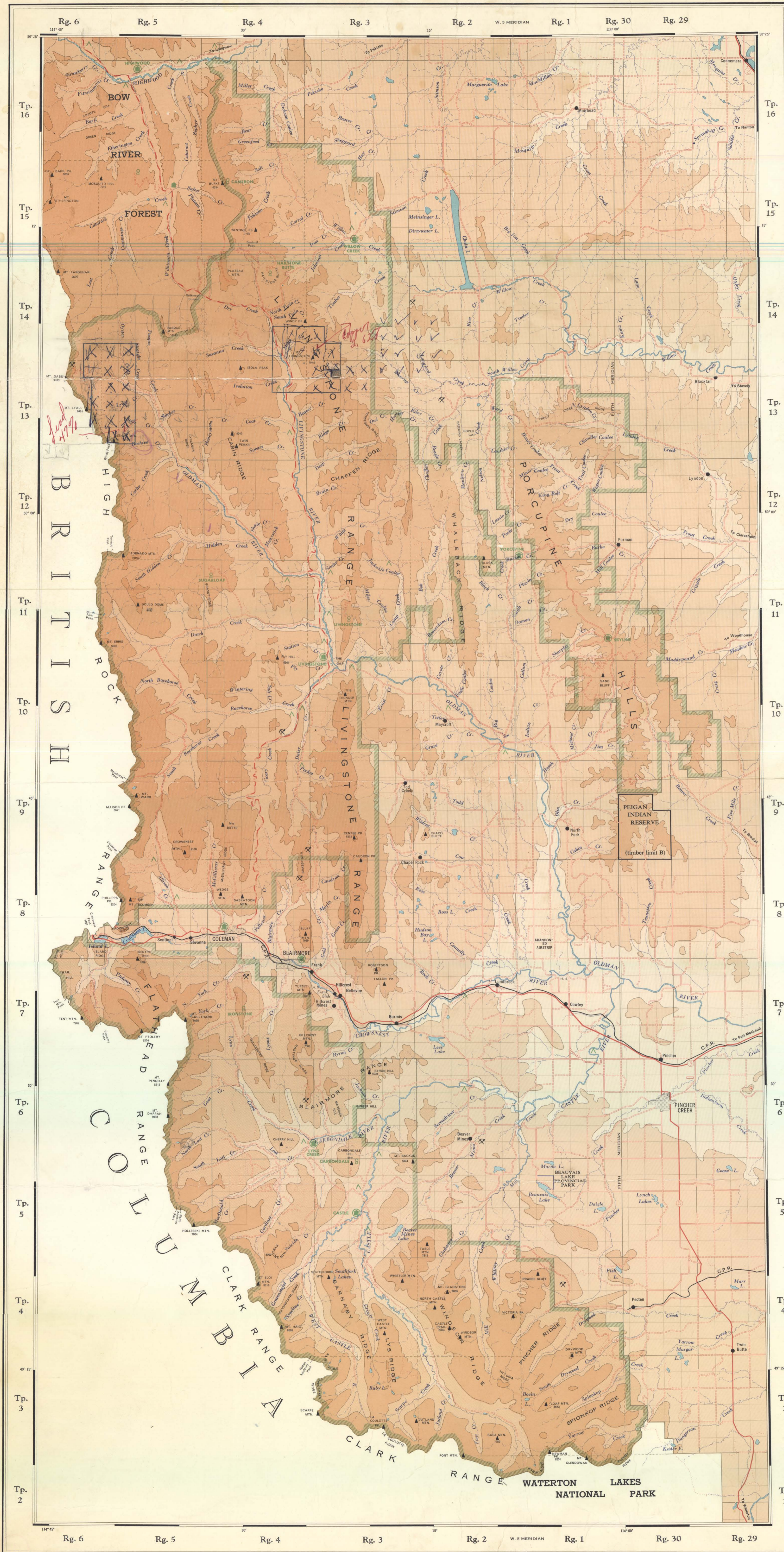
Revised 1968

### INDEX TO ADJOINING SHEETS



KEEP ALBERTA GREEN

Map No. 1  
19700025



Tp. 16  
Tp. 15  
Tp. 14  
Tp. 13  
Tp. 12  
Tp. 11  
Tp. 10  
Tp. 9  
Tp. 8  
Tp. 7  
Tp. 6  
Tp. 5  
Tp. 4  
Tp. 3  
Tp. 2

Rg. 6 Rg. 5 Rg. 4 Rg. 3 Rg. 2 W. 5 MERIDIAN Rg. 1 Rg. 30 Rg. 29

Rg. 6 Rg. 5 Rg. 4 Rg. 3 Rg. 2 W. 5 MERIDIAN Rg. 1 Rg. 30 Rg. 29

BRITISH COLUMBIA

CLARK RANGE  
WATERTON LAKES PARK

CLARK RANGE  
WATERTON LAKES PARK

CLARK RANGE  
WATERTON LAKES PARK