

# MAR 19700015: ATHABASCA LAKE

Received date: Dec 31, 1970

Public release date: Jan 01, 1972

## **DISCLAIMER**

By accessing and using the Alberta Energy website to download or otherwise obtain a scanned mineral assessment report, you ("User") agree to be bound by the following terms and conditions:

- a) Each scanned mineral assessment report that is downloaded or otherwise obtained from Alberta Energy is provided "AS IS", with no warranties or representations of any kind whatsoever from Her Majesty the Queen in Right of Alberta, as represented by the Minister of Energy ("Minister"), expressed or implied, including, but not limited to, no warranties or other representations from the Minister, regarding the content, accuracy, reliability, use or results from the use of or the integrity, completeness, quality or legibility of each such scanned mineral assessment report;
- b) To the fullest extent permitted by applicable laws, the Minister hereby expressly disclaims, and is released from, liability and responsibility for all warranties and conditions, expressed or implied, in relation to each scanned mineral assessment report shown or displayed on the Alberta Energy website including but not limited to warranties as to the satisfactory quality of or the fitness of the scanned mineral assessment report for a particular purpose and warranties as to the non-infringement or other non-violation of the proprietary rights held by any third party in respect of the scanned mineral assessment report;
- c) To the fullest extent permitted by applicable law, the Minister, and the Minister's employees and agents, exclude and disclaim liability to the User for losses and damages of whatsoever nature and howsoever arising including, without limitation, any direct, indirect, special, consequential, punitive or incidental damages, loss of use, loss of data, loss caused by a virus, loss of income or profit, claims of third parties, even if Alberta Energy have been advised of the possibility of such damages or losses, arising out of or in connection with the use of the Alberta Energy website, including the accessing or downloading of the scanned mineral assessment report and the use for any purpose of the scanned mineral assessment report so downloaded or retrieved.
- d) User agrees to indemnify and hold harmless the Minister, and the Minister's employees and agents against and from any and all third party claims, losses, liabilities, demands, actions or proceedings related to the downloading, distribution, transmissions, storage, redistribution, reproduction or exploitation of each scanned mineral assessment report obtained by the User from Alberta Energy.

ECONOMIC MINERALS
FILE REPORT No.
<u>U-AF-095(2)</u>

PERMIT TERMINATION REPORT

QUARTZ MINERAL EXPLORATION PERMIT 139

IN THE PROVINCE OF ALBERTA

by

John A. Greig

Department of Geology  
University of Alberta  
Edmonton, Alberta

June 1, 1970

## Results of 1969 Exploration Programme

An airborne radiometric survey covering the complete permit area was conducted by Geo-X Surveys Ltd. of Vancouver. The instrument employed in this survey was an 'Exploranium DIGRS - 2000', 4-channel spectrometer equipped with three 6" by 4" crystals. The radiometric results are presented on the attached map. A second map shows the location of flight lines.

Flight line spacing is 1/8 th mile. Background for the Bi<sup>214</sup> radiation averages 4 - 5 counts per second over the permit area. Several areas of anomalous radioactivity are evident on the map and these show intensities of 2 - 3 times background.

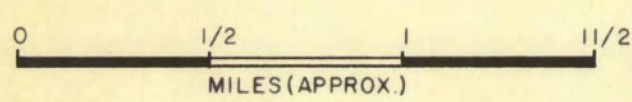
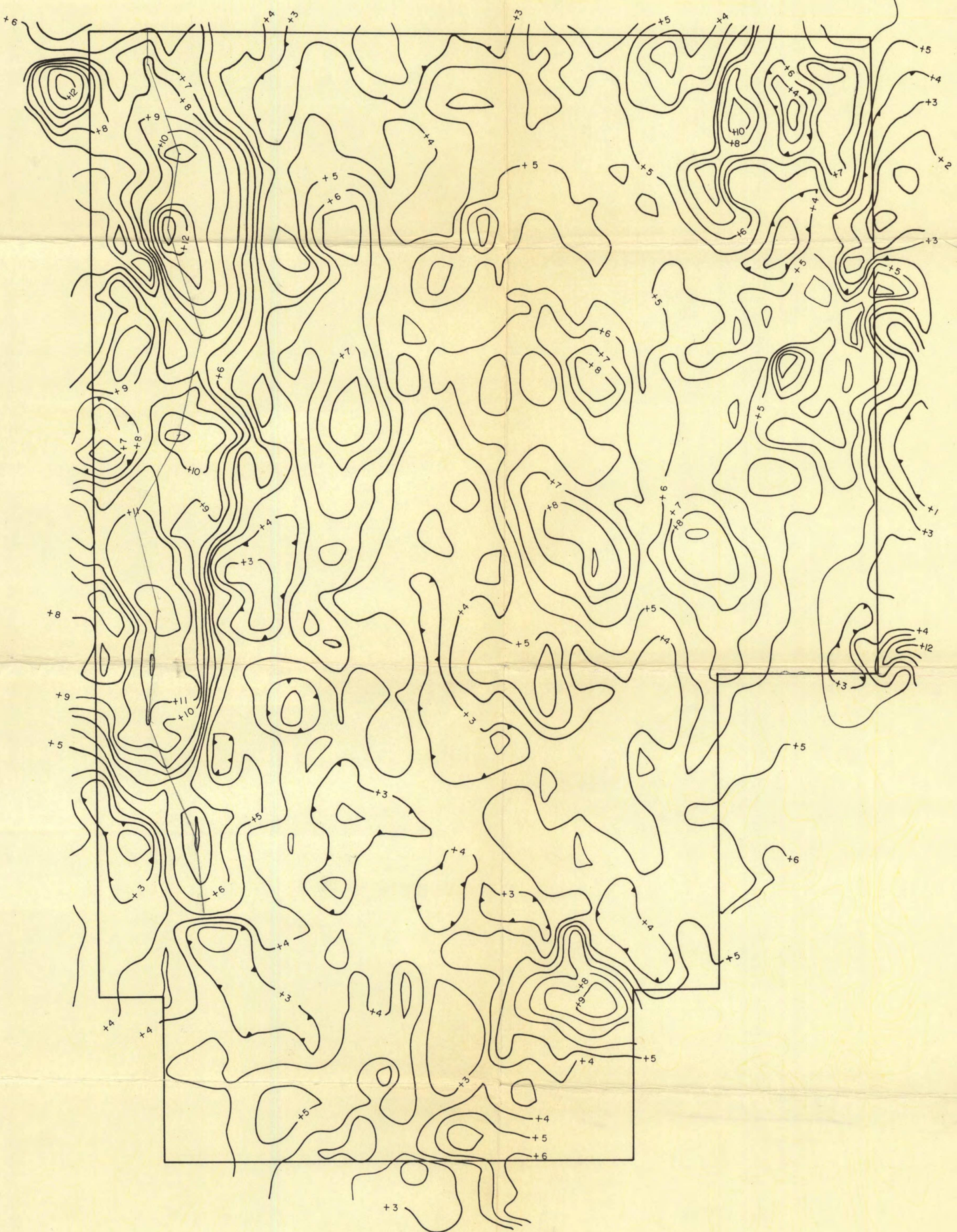
Several of the anomalies warrant a follow - up field exploration program. In view of the costs involved and the current unfavourable situation regarding uranium exploration, it was decided to abandon Permit 139.

A geological report is included with this report. The lithological and structural information therein is based in part on aerial photograph interpretation.

## Approximate Costs of the 1969 Exploration Program on Permit 139

Airborne radiometric survey	\$2000.00
Interpretation of radiometric data	300.00
Geological report including aerial photograph interpretation	200.00
Air photos, maps, other publications and drafting	100.00
	<hr/>
TOTAL	\$2600.00



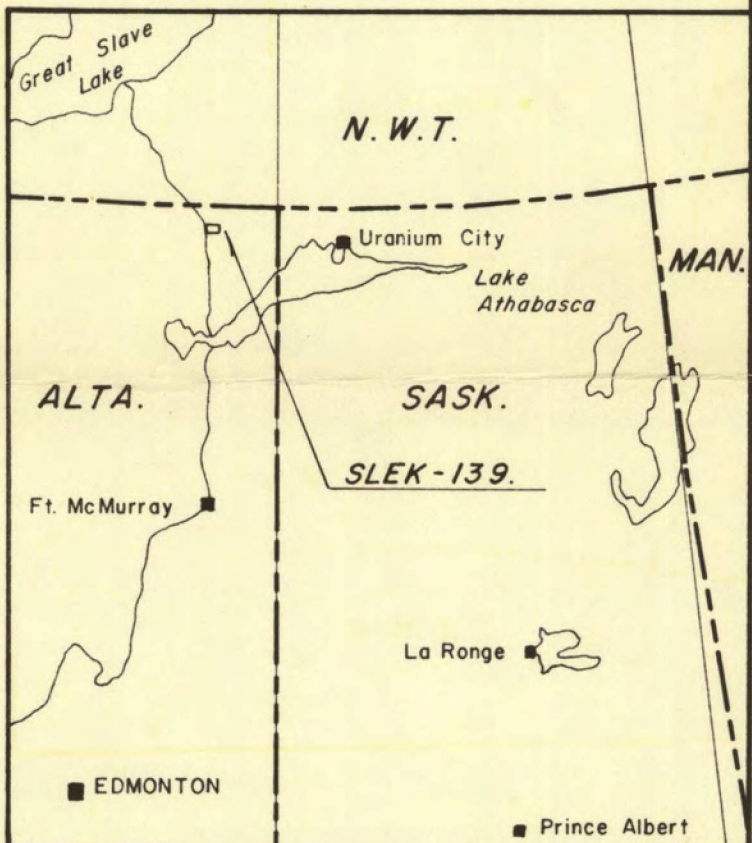
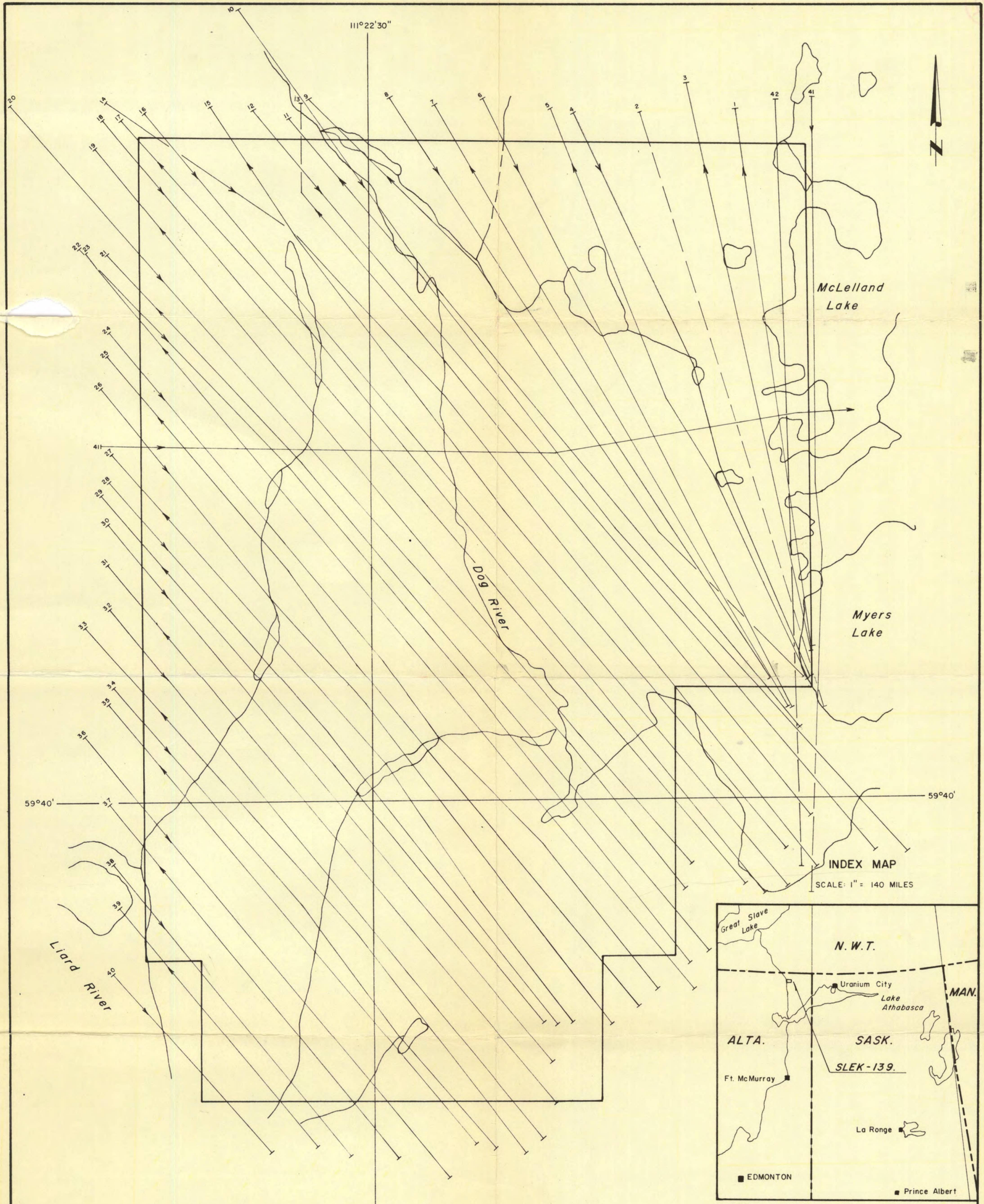


SLEK INVESTMENTS LTD. LAKE ATHABASCA AREA ALBERTA		
PERMIT 139		
BISMUTH 214 CONTOUR INT. : 1 C.P.S.		
Drawn C.C. Comp.	Dated Oct. 29/69	Fig.No.
Checked	Job No. 1107	2

**G** GEO - X SURVEYS LTD.

19700015





NOTE  
Copied From Enlarged N.T.S. Map # 74M - Fitzgerald, Alberta

SLEK INVESTMENTS LTD.  
LAKE ATHABASCA AREA  
ALBERTA

PERMIT 139  
FLIGHT LINE LAYOUT

