

MAR 19700005: FOREMOST

Received date: Dec 31, 1970

Public release date: Jan 01, 1972

DISCLAIMER

By accessing and using the Alberta Energy website to download or otherwise obtain a scanned mineral assessment report, you ("User") agree to be bound by the following terms and conditions:

- a) Each scanned mineral assessment report that is downloaded or otherwise obtained from Alberta Energy is provided "AS IS", with no warranties or representations of any kind whatsoever from Her Majesty the Queen in Right of Alberta, as represented by the Minister of Energy ("Minister"), expressed or implied, including, but not limited to, no warranties or other representations from the Minister, regarding the content, accuracy, reliability, use or results from the use of or the integrity, completeness, quality or legibility of each such scanned mineral assessment report;
- b) To the fullest extent permitted by applicable laws, the Minister hereby expressly disclaims, and is released from, liability and responsibility for all warranties and conditions, expressed or implied, in relation to each scanned mineral assessment report shown or displayed on the Alberta Energy website including but not limited to warranties as to the satisfactory quality of or the fitness of the scanned mineral assessment report for a particular purpose and warranties as to the non-infringement or other non-violation of the proprietary rights held by any third party in respect of the scanned mineral assessment report;
- c) To the fullest extent permitted by applicable law, the Minister, and the Minister's employees and agents, exclude and disclaim liability to the User for losses and damages of whatsoever nature and howsoever arising including, without limitation, any direct, indirect, special, consequential, punitive or incidental damages, loss of use, loss of data, loss caused by a virus, loss of income or profit, claims of third parties, even if Alberta Energy have been advised of the possibility of such damages or losses, arising out of or in connection with the use of the Alberta Energy website, including the accessing or downloading of the scanned mineral assessment report and the use for any purpose of the scanned mineral assessment report so downloaded or retrieved.
- d) User agrees to indemnify and hold harmless the Minister, and the Minister's employees and agents against and from any and all third party claims, losses, liabilities, demands, actions or proceedings related to the downloading, distribution, transmissions, storage, redistribution, reproduction or exploitation of each scanned mineral assessment report obtained by the User from Alberta Energy.

47 Hollinsworth Building,
301 - 8th Avenue, South West,
Calgary 2, Alberta,
January 15, 1970.

ECONOMIC MINERALS
FILE REPORT No.
U-AF-048(1)

Department of Mines and Minerals,
Mineral Division,
Agriculture Building,
9718 - 107th Street,
Edmonton 6, Alberta.

Gentlemen:

Re: Quartz Mineral Exploration Permit No. 90
Foremost Area

Please accept this letter as a report of the work carried out on Quartz Mineral Exploration Permit No. 90. A statutory declaration of the expenditures incurred is also included as a part of this report.

In compliance with our original work program a test hole was drilled on this permit. The following is a list of the data pertinent to this hole:

- Location: Lsd. 2, Sec. 6, Twp. 7, Rge. 11 W4M
- Co-ordinates: north 660', west 2,020'
- Licence No: 35461
- Hole Size: 4 3/4"
- Depth: 635 feet
- Bore Hole Fluid: water and mud.
- Terminal Formation: Lower Milk River
- Completion Date: February 3, 1969
- Logs: Self Potential 635' - surface
- Natural gamma ray 635' - surface
- Resistance 635' - surface
- Samples: 10 foot samples 0' - 605'
- Core: 605' - 635'
- Plugs: Full Length.

The gamma ray curve gave a negative result with respect to the occurrence of uranium ore. The core and samples were checked in Casper, Wyoming for the occurrence of uranium minerals and they also gave a negative result. A copy of the log is attached to this report.

The expenditures incurred in this work program were as follows:

Drilling	\$ 914.29
Casing 57 ft. @ \$5.50 per foot	313.50
Special Abandonment 1.7 hrs. @ \$23.00 per hour	39.10
Living Allowance 2.6 days @ \$7.00 per day for 7 men	127.40
Coring 30 ft. @ \$5.50 per foot	165.00
Logging	860.40
Supervision and Overhead	300.00
Evaluation (core and logs)	400.00

TOTAL COSTS \$ 3,119.69

The drilling, coring and logging were given out on the basis of a five well program and therefore, it has been necessary to take the total invoices and divide them by five in order to pro-rate the costs to the test hole at Foremost. We would be happy to furnish you with copies of these invoices if you should wish to examine them.

We intend to surrender this permit in view of the negative results obtained in our exploration program and if this report meets with your approval, we respectfully request that our deposit be returned to the address given below.

Yours very truly,

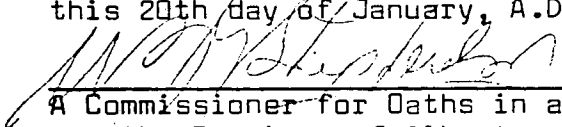


HARRY L. TAYLOR
PETROLEUM AND MINING GEOLOGISTS LTD.
47 Hollinsworth Building,
301 - 8th Avenue, South West,
Calgary 2, Alberta.

HLT/jt
Encl.
c.c. Cliffs of Canada Ltd.,
Thunder Bay, Ontario.

THIS IS EXHIBIT "A" REFERRED TO IN
THE ATTACHED STATUTORY DECLARATION.

SWORN before me at the City of
Calgary, in the Province of Alberta,
this 20th day of January, A.D. 1970.


A Commissioner for Oaths in and for
the Province of Alberta.



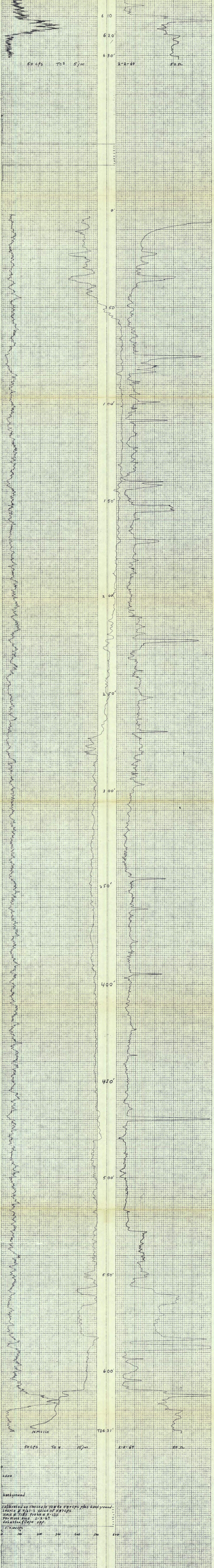
Century Geophysical Corporation
Tulsa, Oklahoma

1700005 Figure 1

DATE 2-2-69		HOLE NO. 635	T. D. DRILLED 635 ft.
BORE HOLE Geoscope Petroleum Consultants Ltd.		SEC. Formost	BORE HOLE FLUID H₂O - Mud
AREA Formost		COUNTY Formost	DENSITY
STATE Alberta		COMPANY Geoscope Pet.	RESISTIVITY
COUNTY Formost		DATE 2-2-69	OPERATOR Johnston/Cape
SECTION		LOG MEASURED FROM GA	UNIT 7183
TOWNSHIP		TOTAL FEET LOGGED 631	LOCATION Calgary
RANGE			DRIVE
INITIAL RUN			TIME IN
T. D. LOGGED		GAMMA BEGINS (Initial Run Offset)	STANDBY .5 Hrs. 20:20
SCALE			LOGGING
GAMMA FULL SCALE 631 ft.			TOTAL 2.0 Hrs.
TIME CONSTANT 50 Cps.			ROUNDTRIP MESSAGE
LOGGING SPEED 4 Sec.			CHARGEABLE STANDBY
CALIBRATION 15 Ft./Min.			
SOURCE NO. 9/67-3			
SOURCE VALUE 587Cps			
PROBE SIZE #H-132			
RES. (FULL SCALE) 130 in.			
S. P. 50 Mv/in.			

SELF POTENTIAL
NATURAL GAMMA RAY
COUNTS PER SECOND

CALIPER
RESISTANCE
OHMS



Calibrated on 500 scale Tc 2 to 587Cps plus background
 source # 9/67-3 value of 587Cps
 Unit # 7183 Probe # H-132
 For Most Area 2-2-69
 Johnston/Cape off.
 1" = 100Cps
 100 200 300 400 500 600

QUARTZ MINERAL EXPLORATION PERMIT No. 90

19700005

(72E/5,6,11,12)

GEOSCOPE PETROLEUM CONSULTANTS LTD.,
235 - EXAMINER BLDG.,
805 - 5th. STREET S.W.,
CALGARY, ALBERTA.

DATE OF ISSUE - DECEMBER 12, 1968
AREA - 9,760 ACRES.

TP. 7

TP. 6

TP. 5

R. 12

R. 11 W. 4 M.

QUARTZ MINERAL EXPLORATION PERMIT No. 90

CANCELLED

GEOSCOPE PETROLEUM CONSULTANTS LTD.,
235 - EXAMINER BLDG.,
805 - 5th. STREET S.W.,
CALGARY, ALBERTA.

DATE OF ISSUE - DECEMBER 12, 1968
AREA - 9,760 ACRES.

NO LEASES SELECTED

TP. 7

TP. 6

TP. 5

R. 12

R. 11 W. 4 M.