

MAR 19700004: COLD LAKE

Received date: Dec 31, 1970

Public release date: Jan 01, 1972

DISCLAIMER

By accessing and using the Alberta Energy website to download or otherwise obtain a scanned mineral assessment report, you ("User") agree to be bound by the following terms and conditions:

- a) Each scanned mineral assessment report that is downloaded or otherwise obtained from Alberta Energy is provided "AS IS", with no warranties or representations of any kind whatsoever from Her Majesty the Queen in Right of Alberta, as represented by the Minister of Energy ("Minister"), expressed or implied, including, but not limited to, no warranties or other representations from the Minister, regarding the content, accuracy, reliability, use or results from the use of or the integrity, completeness, quality or legibility of each such scanned mineral assessment report;
- b) To the fullest extent permitted by applicable laws, the Minister hereby expressly disclaims, and is released from, liability and responsibility for all warranties and conditions, expressed or implied, in relation to each scanned mineral assessment report shown or displayed on the Alberta Energy website including but not limited to warranties as to the satisfactory quality of or the fitness of the scanned mineral assessment report for a particular purpose and warranties as to the non-infringement or other non-violation of the proprietary rights held by any third party in respect of the scanned mineral assessment report;
- c) To the fullest extent permitted by applicable law, the Minister, and the Minister's employees and agents, exclude and disclaim liability to the User for losses and damages of whatsoever nature and howsoever arising including, without limitation, any direct, indirect, special, consequential, punitive or incidental damages, loss of use, loss of data, loss caused by a virus, loss of income or profit, claims of third parties, even if Alberta Energy have been advised of the possibility of such damages or losses, arising out of or in connection with the use of the Alberta Energy website, including the accessing or downloading of the scanned mineral assessment report and the use for any purpose of the scanned mineral assessment report so downloaded or retrieved.
- d) User agrees to indemnify and hold harmless the Minister, and the Minister's employees and agents against and from any and all third party claims, losses, liabilities, demands, actions or proceedings related to the downloading, distribution, transmissions, storage, redistribution, reproduction or exploitation of each scanned mineral assessment report obtained by the User from Alberta Energy.

ECONOMIC MINERALS

FILE REPORT No.

U-AF-035(1)

138610

47 Hollinsworth Building,
301 - 8th Avenue, South West,
Calgary 2, Alberta,
January 15, 1970.

Department of Mines and Minerals,
Mineral Division,
Agriculture Building,
9718 - 107th Street,
Edmonton 6, Alberta.

Gentlemen:

Re: Quartz Mineral Exploration Permit No. 76
Cold Lake Area

Please accept this letter as a report of the work carried out on Quartz Mineral Exploration Permit No. 76. A statutory declaration of the expenditures incurred is also included as a part of this report.

In compliance with our original work program a test hole was drilled on this permit. The following is a list of the data pertinent to this hole:

Location: Lsd. 4, Sec. 35, Twp. 63, Rge. 3 W4M
Co-ordinates: north 390', east 340'
Licence No.: 35453
Hole Size: 4 3/4"
Depth: 575 feet
Bore Hole Fluid: water and mud.
Terminal Formation: 2nd White Specks.
Completion Date: January 13, 1969.
Logs: Self Potential 569' - surface.
Natural Gamma Ray 569' - surface.
Resistance 569' - surface.
Samples: 0' - 366' 477' - 535'
Core: 366' - 477' 535' - 575'
Plugs: 0' - 25'

The gamma ray curve gave a negative result with respect to the occurrence of uranium ore. The core and samples were checked in Casper, Wyoming for the occurrence of uranium minerals and they also gave a negative result. A copy of the log is attached to this report.

The expenditures incurred in this work program were as follows:

Drilling	914.29
Casing 57' @ 5.50 per foot	313.50
Living Allowance 2.6 days @ \$7.00 per day for 7 men	127.40
Coring 151' @ \$5.50 per foot	830.50
Logging	860.40
Supervision and Overhead	300.00
Evaluation (core and logs)	400.00
	<hr/>
TOTAL COSTS	\$ <u>3,746.09</u>

The drilling, coring and logging were given out on the basis of a five well program and therefore, it has been necessary to take the total invoices and divide them by five in order to pro-rate the costs to the test hole at Cold Lake. We would be happy to furnish you with copies of the invoices if you should wish to examine them.

We intend to surrender this permit in view of the negative results obtained in our exploration program and if this report meets with your approval we respectfully request that our deposit be returned to the address given below.

Yours very truly,



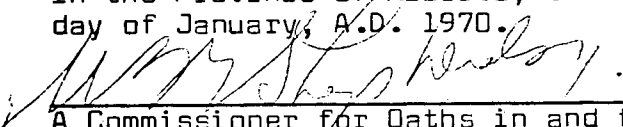
HARRY L. TAYLOR
 PETROLEUM AND MINING GEOLOGISTS LTD.
 47 Hollinsworth Building,
 301 - 8th Avenue, South West,
 Calgary 2, Alberta.

HLT/jt
 Encl.

c.c. Cliffs of Canada Ltd.,
 Thunder Bay, Ontario.

THIS IS EXHIBIT "A" REFERRED TO IN
 THE ATTACHED STATUTORY DECLARATION.

SWORN before me at the City of Calgary,
 in the Province of Alberta, this 20th
 day of January, A.D. 1970.


 A Commissioner for Oaths in and for
 the Province of Alberta.

QUARTZ MINERAL EXPLORATION PERMIT No. 76

19700004

GEOSCOPE PETROLEUM CONSULTANTS
LTD.,
235 EXAMINER BLDG.,
805 - 5th STREET S.W.,
CALGARY, ALBERTA

DATE OF ISSUE - DECEMBER 12, 1968
AREA - 9,920 ACRES

TP. 64

TP. 63

R. 3 W. 4 M.

QUARTZ MINERAL EXPLORATION PERMIT No. 76

CANCELLED

GEOSCOPE PETROLEUM CONSULTANTS
LTD.,
235 EXAMINER BLDG.,
805 - 5th STREET S.W.,
CALGARY , ALBERTA

DATE OF ISSUE - DECEMBER 12 , 1968
AREA - 9,920 ACRES

NO LEASES SELECTED

TP. 64

TP. 63

R. 3 W. 4 M.

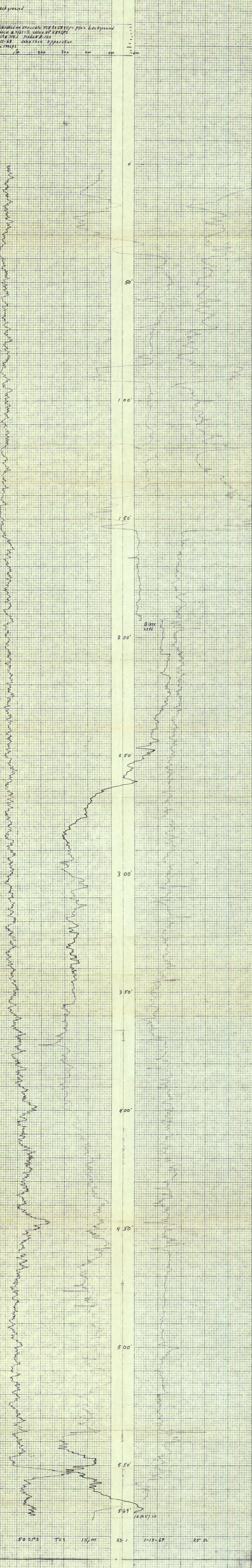


DATE: 1-13-69
 COMPANY: Geoscope Petroleum Consultants Limited
 BORE HOLE: 23-1
 AREA: Cold Lake
 COUNTY: Cold Lake
 STATE: Alberta Calgary
 LOG MEASURED FROM: G.L. through rig
 STATE: Alberta Can
 COMPANY: Geoscope Pet.
 DATE: 1-13-69
 TOTAL FEET LOGGED: 567

HOLE NO: 23-1
 SEC: 35 TWP: 63 RANGE: 3W4
 AREA: Cold Lake
 COUNTY: Cold Lake
 T.D. DRILLED: 575
 BIT SIZE: 4 3/4
 BORE HOLE FLUID: H₂O Mud
 OPERATOR: Johnston
 UNIT NO: 7183
 LOCATION: Calgary Alberta
 DRIVE: 1.0 Hrs. 4:30
 RESISTIVITY: 2.0 Hrs. 6:00
 LOGGING SPEED: 1.5 Hrs.
 BOUNDSTRIP MILEAGE: 4.5 Hrs.
 CHANGEABLE STAND: Hrs.

T. D. LOGGED	SCALE	SCALE	SCALE	SCALE	SCALE	SCALE	SCALE	SCALE	SCALE
569	50	4	15	1.0	2.0	1.5	4.5	1.0	4.30

SELF POTENTIAL NATURAL GAMMA RAY COUNTS PER SECOND CALIPER RESISTANCE OHMS



Calibrated on 50 cps scale to 50 cps plus background
 Source # 9/67-3 Value of 50 cps
 Unit # 7183 Probe # H-133
 1-13-69 Johnston operator
 42 100 cps