

MAR 19690028: LAKE ATHABASCA

Received date: Dec 31, 1969

Public release date: Jan 01, 1971

DISCLAIMER

By accessing and using the Alberta Energy website to download or otherwise obtain a scanned mineral assessment report, you ("User") agree to be bound by the following terms and conditions:

- a) Each scanned mineral assessment report that is downloaded or otherwise obtained from Alberta Energy is provided "AS IS", with no warranties or representations of any kind whatsoever from Her Majesty the Queen in Right of Alberta, as represented by the Minister of Energy ("Minister"), expressed or implied, including, but not limited to, no warranties or other representations from the Minister, regarding the content, accuracy, reliability, use or results from the use of or the integrity, completeness, quality or legibility of each such scanned mineral assessment report;
- b) To the fullest extent permitted by applicable laws, the Minister hereby expressly disclaims, and is released from, liability and responsibility for all warranties and conditions, expressed or implied, in relation to each scanned mineral assessment report shown or displayed on the Alberta Energy website including but not limited to warranties as to the satisfactory quality of or the fitness of the scanned mineral assessment report for a particular purpose and warranties as to the non-infringement or other non-violation of the proprietary rights held by any third party in respect of the scanned mineral assessment report;
- c) To the fullest extent permitted by applicable law, the Minister, and the Minister's employees and agents, exclude and disclaim liability to the User for losses and damages of whatsoever nature and howsoever arising including, without limitation, any direct, indirect, special, consequential, punitive or incidental damages, loss of use, loss of data, loss caused by a virus, loss of income or profit, claims of third parties, even if Alberta Energy have been advised of the possibility of such damages or losses, arising out of or in connection with the use of the Alberta Energy website, including the accessing or downloading of the scanned mineral assessment report and the use for any purpose of the scanned mineral assessment report so downloaded or retrieved.
- d) User agrees to indemnify and hold harmless the Minister, and the Minister's employees and agents against and from any and all third party claims, losses, liabilities, demands, actions or proceedings related to the downloading, distribution, transmissions, storage, redistribution, reproduction or exploitation of each scanned mineral assessment report obtained by the User from Alberta Energy.

X-RAY ASSAY LABORATORIES

LIMITED

45 LESMILL ROAD

DON MILLS ONTARIO

445-5755

Certificate of Analysis

NO. 3609

TO. McIntyre Porcupine Mines Limited,
55 Yonge St., suite 1200,
Toronto, Ontario

ECONOMIC MINERALS

FILE REPORT No.

U-AF-045(2)

U-AF-046(2)

RECEIVED September 4, 1969

INVOICE NO. 4712

SAMPLE(S) OF soil

SUBMITTED TO US SHOW RESULTS AS FOLLOWS:


Sample		U_3O_8 ppm
Miles-6-	3	X
	4	X
	5	X
	6	X
	7	X
	8	X
	9	X
	10	X
	11	X
	12	X
	13	X

X= less than 2 ppm

INDEXING DOCUMENT NOS. 700084
700086

X-RAY ASSAY LABORATORIES LIMITED

DATE September 19, 1969

CERTIFIED BY 

X-RAY ASSAY LABORATORIES

LIMITED

45 LESMILL ROAD

DON MILLS ONTARIO

445-5755

Certificate of Analysis

NO. 3609

TO. McIntyre Porcupine Mines Limited,
55 Yonge St., suite 1200,
Toronto, Ontario

RECEIVED September 4, 1969

INVOICE NO. 4712

SAMPLE(S) OF Sample	soil	U ₃ O ₈	SUBMITTED TO US SHOW RESULTS AS FOLLOWS: Sample	U ₃ O ₈	
Miles 4-	5	X	Miles 4-	45	X
	6	X		46	X
	7	X		47	X
	8	X		48	X
	9	X		49	X
	10	X		50	X
	11	X	Miles 5-	1	X
	12	X		2	X
	13	X		3	X
	14	X		4	X
	15	X		5	X
	16	X		6	X
	17	X		7	X
	20	X		8	X
	21	X		9	X
	22	X		10	X
	23	X		11	X
	24	X		12	X
	25	X		13	X
	26	X		14	X
	27	X		15	X
	28	X		16	X
	32	X		17	X
	33	X		18	X
	34	X		19	X
	35	X		20	X
	36	X		24	X
	37	X		25	X
	38	X		26	X
	39	X		27	X
	40	X		28	X
	41	X		29	X
	42	X		30	X
	43	X	Miles 6-	1	X
	44	X		2	X

X-RAY ASSAY LABORATORIES LIMITED

DATE September 19, 1969

CERTIFIED BY

X-RAY ASSAY LABORATORIES

LIMITED

45 LESMILL ROAD

DON MILLS ONTARIO

445-5755

Certificate of Analysis

NO. 3609

To McIntyre Porcupine Mines Limited,
55 Yonge Street, suite 1200,
Toronto, Ontario

J. W. B. B.
SEP 23 1969

RECEIVED September 4, 1969

INVOICE NO. 4712

SAMPLE(S) OF soil

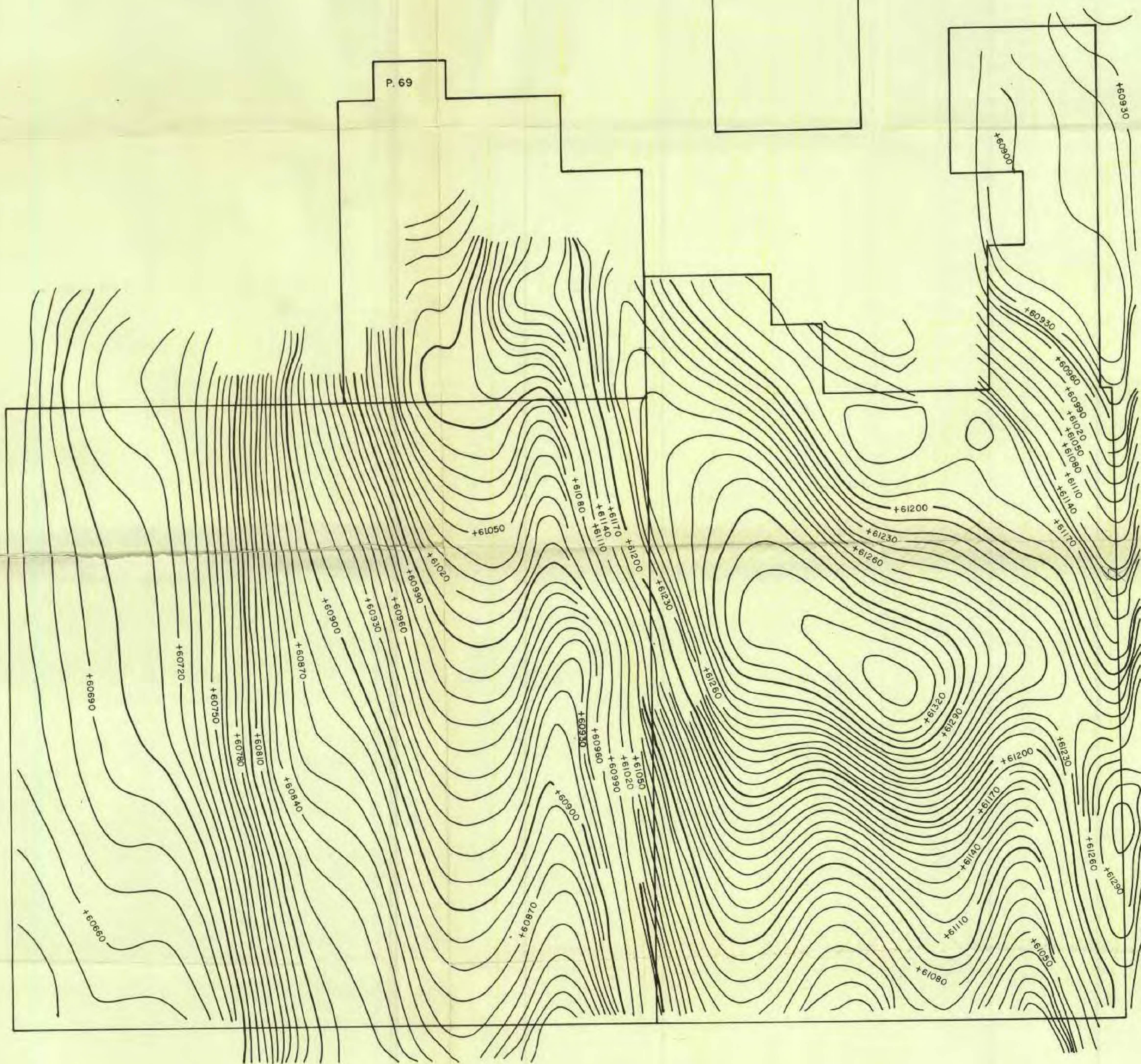
SUBMITTED TO US SHOW RESULTS AS FOLLOWS:

Sample	U ₃ O ₈ ppm	Sample	U ₃ O ₈ ppm
Miles-1- 1	X	Miles-1-41	X
2	X	42	X
3	X	43	X
4	X	44	X
5	X	45	X
6	X	46	X
7	X	47	X
8	X	48	X
9	X	49	X
10	X	50	X
11	X	51	X
12	X	52	X
13	X	53	X
15	X	Miles-2- 1	X
16	X	5	X
17	X	10	X
18	X	15	X
19	X	20	X
20	X	22	X
21	X	25	X
23	X	30	X
25	X	35	X
26	X	40	X
29	X	45	X
30	X	50	X
31	X	Miles-3-5	X
32	X	15	X
33	X	25	X
34	X	35	X
35	X	45	X
36	X	53	X
37	X	Miles4- 1	X
38	X	2	X
39	X	3	X
40	X	4	X

X-RAY ASSAY LABORATORIES LIMITED

DATE September 19, 1969

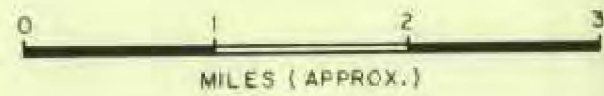
CERTIFIED BY



McINTYRE PORCUPINE MINES LTD.
LAKE ATHABASCA AREA
ALBERTA

PERMITS 87 & 88

MAGNETIC TOTAL INTENSITY
CONTOUR INT. : 10 GAMMAS

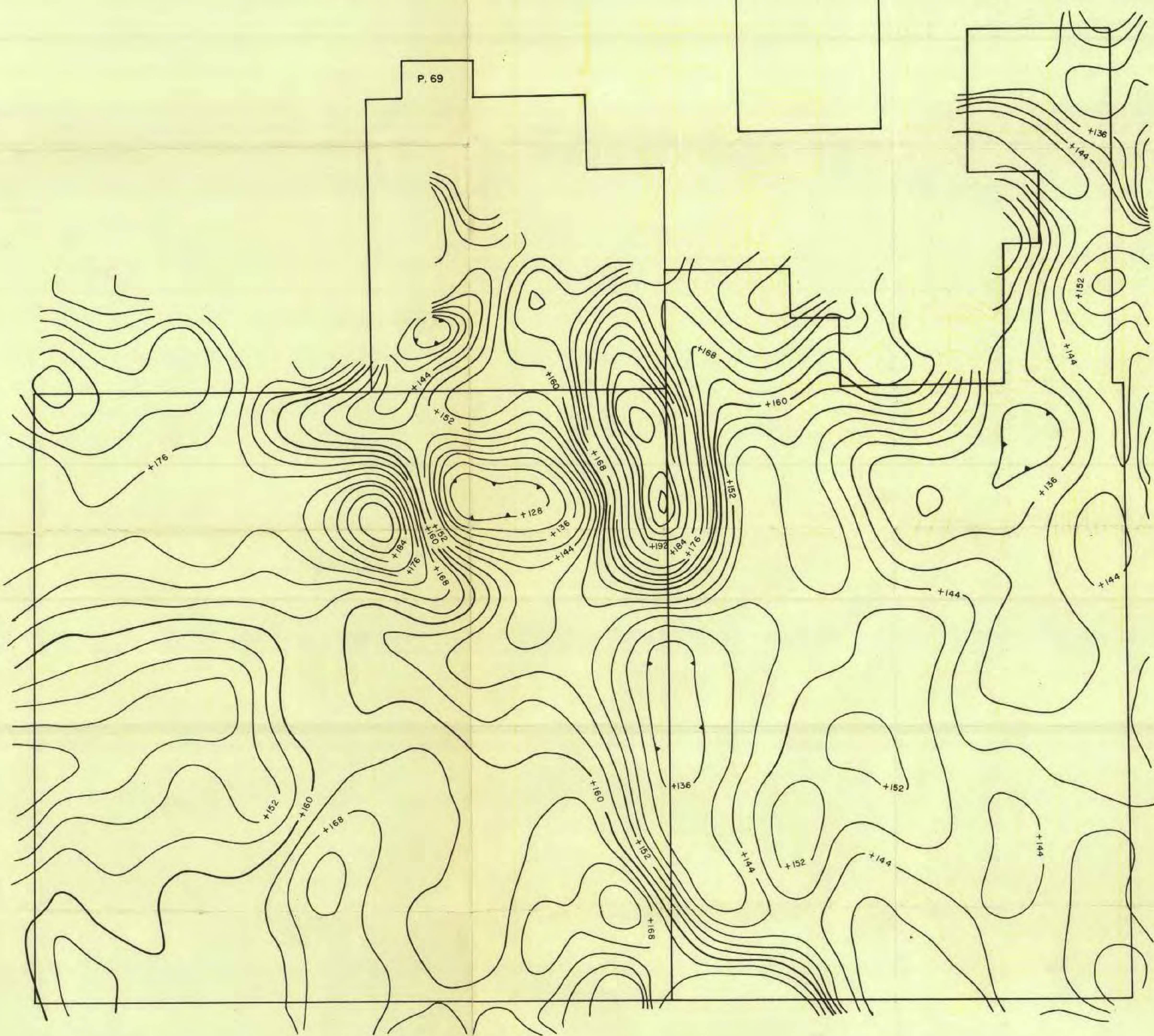


Drawn C.C. Comp Dated SEPT 15/69
Checked Job No. 1089

Fig. No.
3

GEO - X SURVEYS LTD.

19690028




McINTYRE PORCUPINE MINES LTD.
LAKE ATHABASCA AREA
ALBERTA

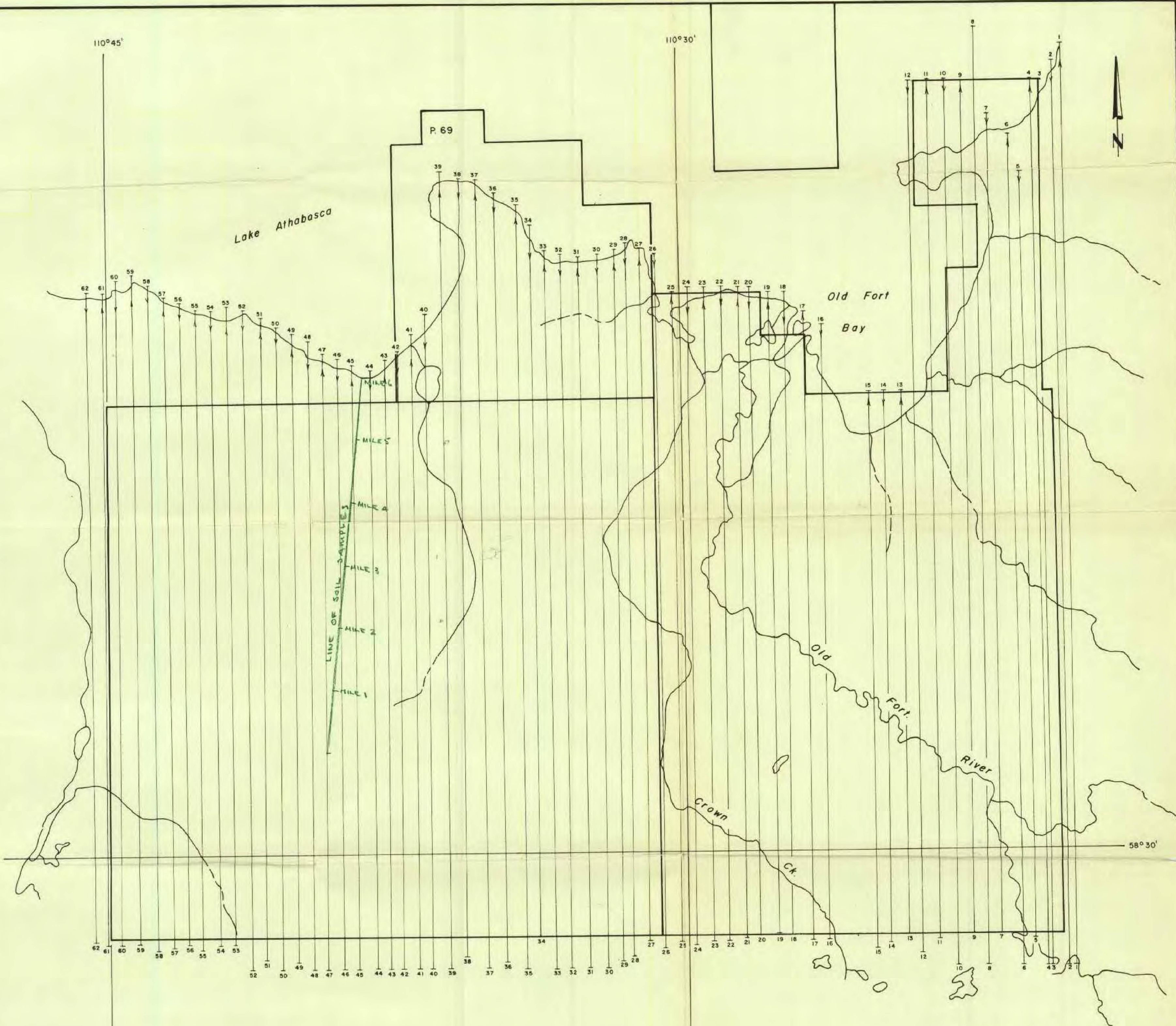


PERMITS 87 & 88
GAMMA RAY TOTAL COUNT
TOTAL COUNT C.P.S
CONTOUR INT. : 4 C.P.S.

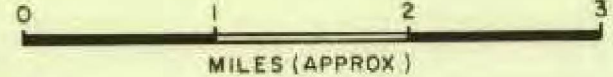
Drawn C.C. Comp. Dated SEPT 15/69 Fig. No. 2
Checked *[Signature]* Job No. 1089

 GEO - X SURVEYS LTD.

19680028



NOTE
 Copied From Enlarged N.T.S. Map # 74L-
 Fort Chipewyan, Alberta



MCINTYRE PORCUPINE MINES LTD.
 LAKE ATHABASCA AREA
 ALBERTA

PERMITS 87 & 88
 FLIGHT PLAN LAYOUT

GEO - X SURVEYS LTD.

Drawn T.M.	Dated SEPT. 15/69	Fig. No. 1
Checked [Signature]	Job No. 1089	

QUARTZ MINERAL EXPLORATION PERMIT No. 87

(744/9110)

McINTYRE PORCUPINE MINES LIMITED,
SUITE 1200 - 55 YONGE STREET,
TORONTO, ONTARIO.

DATE OF ISSUE - DECEMBER 17, 1968
AREA - 38,080 ACRES.

CORRECTION LINE

TP.111

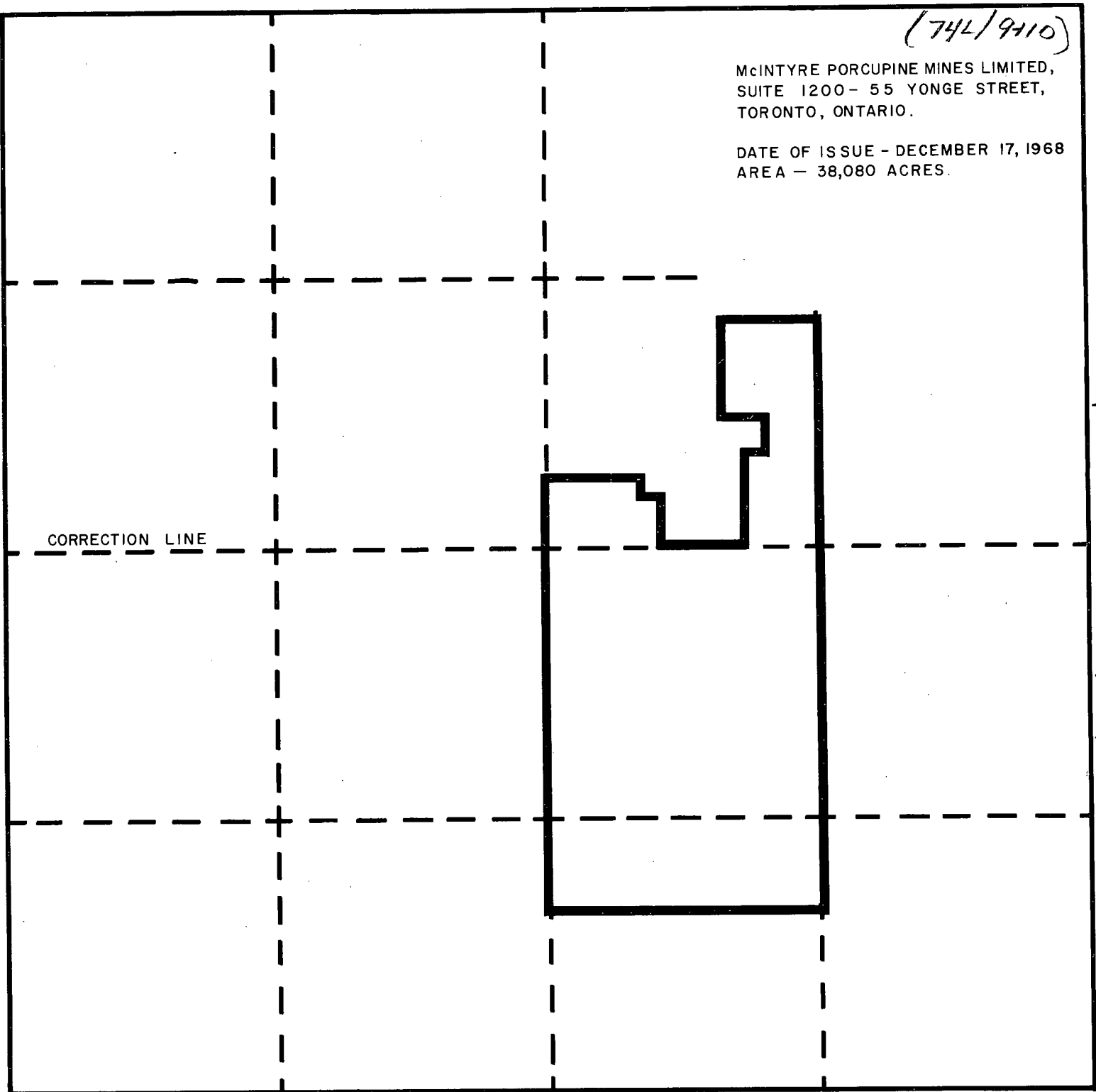
TP.110

TP.109

R.3

R.2 W.4 M.

11
46
30
2
53
22



QUARTZ MINERAL EXPLORATION PERMIT No. 88

(1742/10)

McINTYRE PORCUPINE MINES LIMITED,
SUITE 1200 - 55 YONGE STREET,
TORONTO, ONTARIO.

DATE OF ISSUE - DECEMBER 17, 1968
AREA - 46,080 ACRES.

CORRECTION LINE

TP. 110

TP. 109

R. 5

R. 4

R. 3 W. 4 M.