

MAR 19680145: NORTHERN ALBERTA

Received date: Dec 31, 1968

Public release date: Jan 01, 1970

DISCLAIMER

By accessing and using the Alberta Energy website to download or otherwise obtain a scanned mineral assessment report, you ("User") agree to be bound by the following terms and conditions:

- a) Each scanned mineral assessment report that is downloaded or otherwise obtained from Alberta Energy is provided "AS IS", with no warranties or representations of any kind whatsoever from Her Majesty the Queen in Right of Alberta, as represented by the Minister of Energy ("Minister"), expressed or implied, including, but not limited to, no warranties or other representations from the Minister, regarding the content, accuracy, reliability, use or results from the use of or the integrity, completeness, quality or legibility of each such scanned mineral assessment report;
- b) To the fullest extent permitted by applicable laws, the Minister hereby expressly disclaims, and is released from, liability and responsibility for all warranties and conditions, expressed or implied, in relation to each scanned mineral assessment report shown or displayed on the Alberta Energy website including but not limited to warranties as to the satisfactory quality of or the fitness of the scanned mineral assessment report for a particular purpose and warranties as to the non-infringement or other non-violation of the proprietary rights held by any third party in respect of the scanned mineral assessment report;
- c) To the fullest extent permitted by applicable law, the Minister, and the Minister's employees and agents, exclude and disclaim liability to the User for losses and damages of whatsoever nature and howsoever arising including, without limitation, any direct, indirect, special, consequential, punitive or incidental damages, loss of use, loss of data, loss caused by a virus, loss of income or profit, claims of third parties, even if Alberta Energy have been advised of the possibility of such damages or losses, arising out of or in connection with the use of the Alberta Energy website, including the accessing or downloading of the scanned mineral assessment report and the use for any purpose of the scanned mineral assessment report so downloaded or retrieved.
- d) User agrees to indemnify and hold harmless the Minister, and the Minister's employees and agents against and from any and all third party claims, losses, liabilities, demands, actions or proceedings related to the downloading, distribution, transmissions, storage, redistribution, reproduction or exploitation of each scanned mineral assessment report obtained by the User from Alberta Energy.

19680145

REPORT ON FIELD EXAMINATION

AZTEC OIL AND GAS COMPANY

SULPHUR PROSPECTING PERMIT NO. 178

NORTHERN ALBERTA

THIS REPORT HAS BEEN PREPARED
FOR THE EXCLUSIVE USE OF:

Aztec Oil and Gas Company

COPY NO:.....3.....

EARNSCLOTTE

LINEN BOND

—RAG CONTENT—CANADA—

ECONOMIC MINERALS

FILE REPORT No.

S-AF-178(2)

REPORT ON FIELD EXAMINATION
AZTEC OIL AND GAS COMPANY
SULPHUR PROSPECTING PERMIT NO. 178
NORTHERN ALBERTA

Prepared For
Aztec Oil and Gas Company
November, 1968

J. C. SPROULE AND ASSOCIATES LTD.
OIL AND GAS ENGINEERING AND GEOLOGICAL CONSULTANTS

REPORT ON FIELD EXAMINATION

AZTEC OIL AND GAS COMPANY

SULPHUR PROSPECTING PERMIT NO. 178

NORTHERN ALBERTA

The field work on this Permit has been carried out at the request of Mr. J.B. Duff acting for Aztec Oil and Gas Company. The work was authorized under our letter agreement of July 5, 1968 and the request made was that J.C. Sproule & Associates Ltd. should collect representative near-surface samples as described in the pertinent section of our July 5th letter. We quote:

"We have already carried out a photogeological study on Permit No. 178 and our present plans would call for a field party to check those areas of indicated interest to collect hand specimens and/or auger samples to determine the presence or absence of sulphur. If this initial checking indicates that further geological field work including more detailed shallow auger testing should be carried out, you would be immediately apprised. A brief report on the results of the reconnaissance check would be submitted. You could then, if you so desired, authorize further detailed studies."

"Our charges for the initial field investigation of Permit No. 178 would be \$600."

The field work has been conducted by Mr. N. Soul. The field notes describing the samples taken are as follows. We quote:

"Permit No. 178

Area No. 1

Hole No. 1 - S.W. 17-125-18 W. 5 M. Depth, 4 feet.

<u>Sample No.</u>	<u>Depth</u> Ft.	<u>Sulphur</u> %	<u>Sample</u>
178-1-1	2	15.55	Muskeg
178-1-1	4	Trace	Muskeg

Hole No. 2 - S.W. 20-125-18 W. 5 M. Depth, 8 feet.

<u>Sample No.</u>	<u>Depth</u> Ft.	<u>Sulphur</u> %	<u>Sample</u>
178-1-2	4	0.65	Clay
178-1-2	8	0.15	Clay

Hole No. 3 - S.W. 19-125-18 W. 5 M. Depth, 4 feet.

<u>Sample No.</u>	<u>Depth</u> Ft.	<u>Sulphur</u> %	<u>Sample</u>
178-1-3	4	59.27	Muskeg

Area No. 2

Hole No. 1' - S.E. 31-125-18 W. 5 M. Depth, 2.5 feet.

No sample submitted.

Hole No. 2 - N.W. 32-125-18 W. 5 M. Depth, 7 feet.

<u>Sample No.</u>	<u>Depth</u> Ft.	<u>Sulphur</u> %	<u>Sample</u>
178-2-2	4	2.17	Clay
178-2-2	7	1.55	Clay"

The sample locations are given on the accompanying Figure 1 and the related analyses by Chemical and Geological Laboratories Ltd. constitute Appendix I attached hereto.


With reference to these results, it will be observed that the majority of the analyses made on samples taken from Sulphur Permit No. 178 show only traces or small percentages of sulphur, with two notable exceptions. The material


penetrated was mostly clay, but included muskeg debris. These are normally rather high in sulphur in lake or depressional areas where sulphur is known.

Samples taken from Permit No. 94 consist of clay and muskeg debris. Analyses of these were rather low in sulphur content with the exception of two, which contained 59.27 percent sulphur and 15.55 percent sulphur. These samples, Nos. 178-1-3 and 178-1-1, respectively, were taken from a large area of muskeg which, in other spots, proved to have a low sulphur content. Despite the disparity in the results obtained during this preliminary examination, we feel that the Permit is worthy of additional attention. Inasmuch as the Permit is dominated by broad muskeg areas, a second look is almost mandatory. This follow-up would involve more extensive field studies and sampling of prospective areas as well as to devoting time to the remainder of the Permit.

Under the circumstances, we recommend that Sulphur Prospecting Permit No. 178 be retained.

We will be pleased to submit an estimate of the cost of conducting an adequate exploration sampling program over the area recommended for retention at such time as a complete analysis of costs and performance of the past season's operations have been completed.

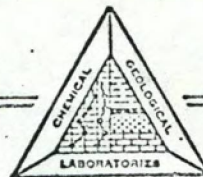

H.B. Lyall, P. Geol.


J.C. Sproule, P. Geol.

1009 Fourth Avenue S.W.,
Calgary, Alberta.
November 15, 1968.
HBL:JCS:ldl

CHEMICAL & GEOLOGICAL LABORATORIES LTD.

14240-115 AVENUE, EDMONTON, ALBERTA



Date Reported: October 11, 1968

Laboratory Report Number: C68-4157

J. C. SPROULE & ASSOCIATES LTD.

Kind of Sample: Soil

Date Received: October 3, 1968

SAMPLE NUMBER	DEPTH IN FEET	ELEMENTAL SULFUR	
		(% by Weight on Dry Sample)	(% by Weight on Wet Sample)
178-1-1	4	Trace	Trace
178-1-2	4	0.65	0.16

REPORT NUMBER: C68-3993 and
C68-3994

Date Reported: August 29th., 1968

Date Received: August 22nd., 1968

SAMPLE NUMBER	DEPTH IN FEET	ELEMENTAL SULFUR (% by Wt. -dry sample)
173-1-1	2	15.55
173-2-2	4	2.17
173-2-2	7	1.55
173-1-2	8	0.15
173-1-3	4	59.27

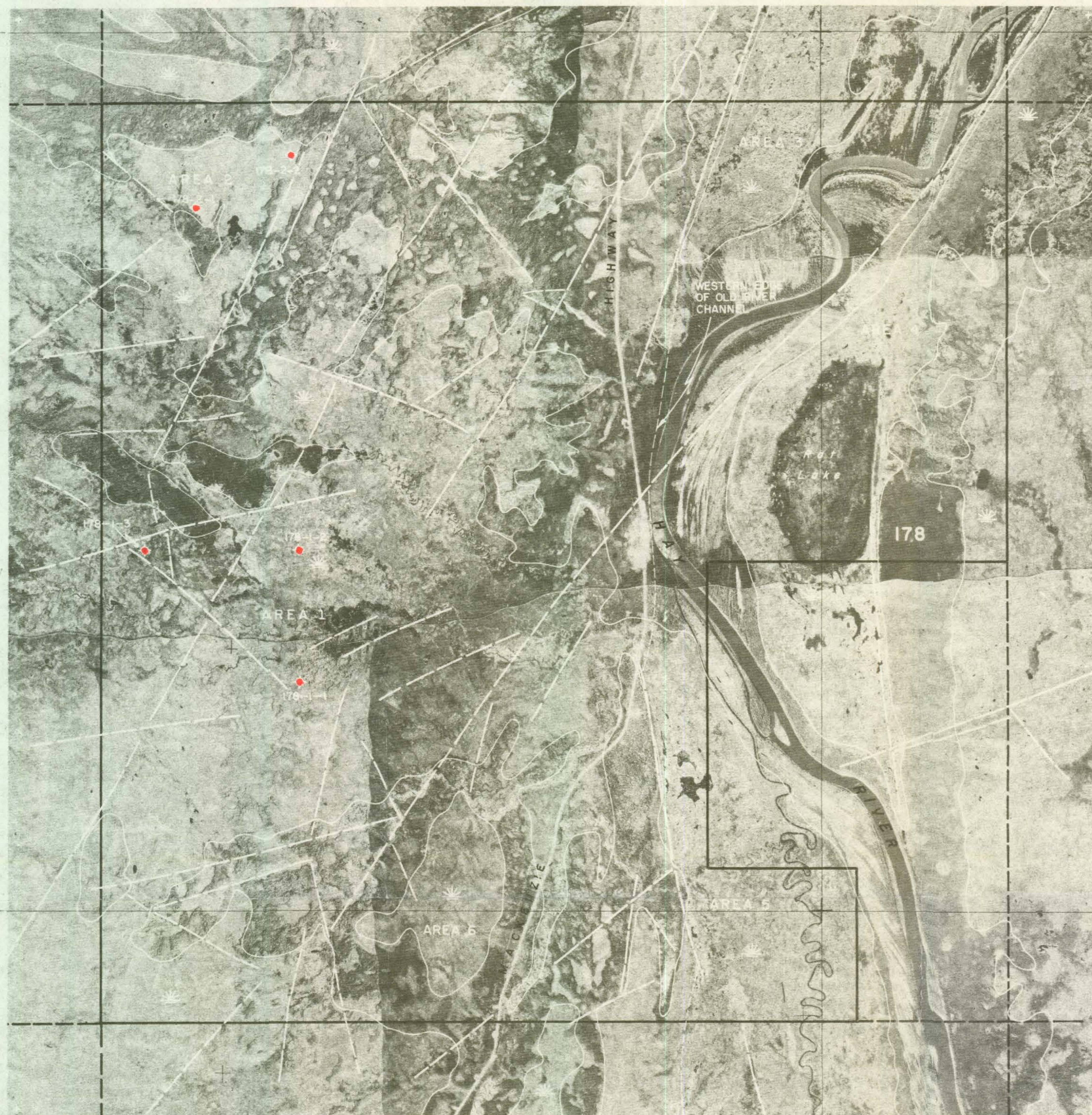
R.18 W.5

117°00'

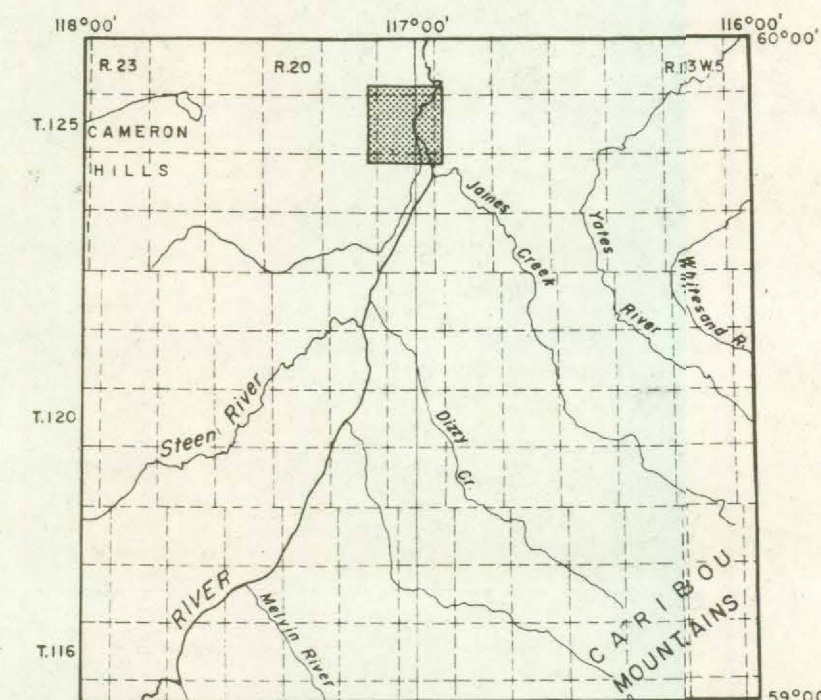
59°55'

T.125

59°50'



INDEX MAP



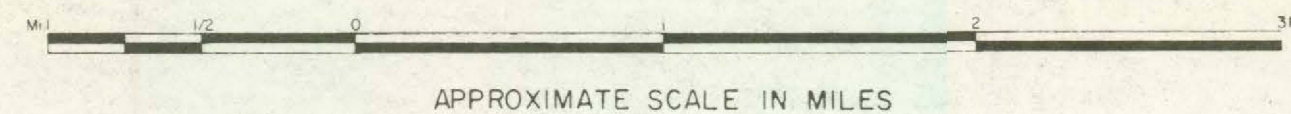
REPRODUCTION OF THIS ILLUSTRATION, OR ANY OF THE INFORMATION ON IT, IN ANY FORM IS PROHIBITED WITHOUT THE WRITTEN AUTHORITY OF J.C. SPROULE AND ASSOCIATES LTD.

PHOTOGEOLOGICAL MOSAIC
SULPHUR PROSPECTING PERMIT
 No. 178
RAT LAKE AREA
ALBERTA

PREPARED FOR
AZTEC OIL & GAS CO. LTD.

LEGEND

- Alignments interpreted to indicate faulting or bedrock fracturing
- Muskeg
- AREA 1, 2 etc. General areas of interest
- 178 Permit Outline
- Sample Location



THIS IS A SEMICONTROLLED MAP-MOSAIC AND SHOULD NOT BE MISTAKEN FOR AN ACCURATE GEOGRAPHIC BASE

J.C. SPROULE AND ASSOCIATES LTD. CALGARY, ALBERTA