

MAR 19680131: ALBERTA

Received date: Dec 31, 1968

Public release date: Jan 01, 1970

DISCLAIMER

By accessing and using the Alberta Energy website to download or otherwise obtain a scanned mineral assessment report, you ("User") agree to be bound by the following terms and conditions:

- a) Each scanned mineral assessment report that is downloaded or otherwise obtained from Alberta Energy is provided "AS IS", with no warranties or representations of any kind whatsoever from Her Majesty the Queen in Right of Alberta, as represented by the Minister of Energy ("Minister"), expressed or implied, including, but not limited to, no warranties or other representations from the Minister, regarding the content, accuracy, reliability, use or results from the use of or the integrity, completeness, quality or legibility of each such scanned mineral assessment report;
- b) To the fullest extent permitted by applicable laws, the Minister hereby expressly disclaims, and is released from, liability and responsibility for all warranties and conditions, expressed or implied, in relation to each scanned mineral assessment report shown or displayed on the Alberta Energy website including but not limited to warranties as to the satisfactory quality of or the fitness of the scanned mineral assessment report for a particular purpose and warranties as to the non-infringement or other non-violation of the proprietary rights held by any third party in respect of the scanned mineral assessment report;
- c) To the fullest extent permitted by applicable law, the Minister, and the Minister's employees and agents, exclude and disclaim liability to the User for losses and damages of whatsoever nature and howsoever arising including, without limitation, any direct, indirect, special, consequential, punitive or incidental damages, loss of use, loss of data, loss caused by a virus, loss of income or profit, claims of third parties, even if Alberta Energy have been advised of the possibility of such damages or losses, arising out of or in connection with the use of the Alberta Energy website, including the accessing or downloading of the scanned mineral assessment report and the use for any purpose of the scanned mineral assessment report so downloaded or retrieved.
- d) User agrees to indemnify and hold harmless the Minister, and the Minister's employees and agents against and from any and all third party claims, losses, liabilities, demands, actions or proceedings related to the downloading, distribution, transmissions, storage, redistribution, reproduction or exploitation of each scanned mineral assessment report obtained by the User from Alberta Energy.

J. C. SPROULE AND ASSOCIATES LTD.

GEOLOGICAL & ENGINEERING CONSULTANTS

1009 FOURTH AVENUE S.W.
CALGARY - ALBERTA

P.O. BOX 2525

TELEPHONE 269-7951
AREA CODE 403
CABLE ADDRESS "SPROULE"

ONTARIO REPRESENTATIVE
A. E. MACKAY
27 FARMVIEW CRESCENT
WILLOWDALE, ONTARIO
TELEPHONE 447-5682
AREA CODE 416

AUSTRALIAN REPRESENTATIVE
DATA ANALYSIS PTY. LTD.
127-141 EAGLE STREET
BRISBANE, QUEENSLAND
TELEPHONE 27603

J. C. SPROULE, P.GEOL.
S. R. L. HARDING, P.GEOL.
A. N. EDGINGTON, P.ENG.
H. A. GORRELL, P.GEOL.
G. H. JONES, P.GEOL.
C. A. S. BULMER, P.GEOL.

G. R. ALDERMAN, P.GEOL.
J. W. BAKHOVEN, P.GEOL.
E. D. BIETZ, P.ENG.
M. J. BRUSSET, P.ENG.
J. R. CHILTON, P.GEOL.
N. A. CLELAND, P.ENG.
J. P. HUNTER, P.ENG.
N. SOUL, P.GEOL.

October 25, 1968

REF. 2.719.1527

ECONOMIC MINERALS

FILE REPORT No.

S-AF-165(2)
S-AF-169(2)

Mr. R. T. Vanderham,
Peyto Oils Limited,
335 Examiner Building,
Calgary, Alberta.

Dear Sir:

Re: Sulphur Permits Nos. 165, 166, 169, 173 & 174
Townships 116 and 117, Ranges 5, 6, and 7, W.5

In response to your letter authorization of August 28, 1968, our field party, under the general supervision of Norman Soul, has completed the work described in your letter. We have, subsequent to that, submitted the samples obtained to Chemical & Geological Laboratories Ltd. Chemical & Geological Laboratory Report No. C68-4119, dated October 7, 1968, attached hereto, presents the results obtained.

In accordance with your instructions, Mr. Soul has made notes on the samples on the locations selected and the list of these holes with the related notes is also attached. As you will observe, the sample numbers in each case are correlated as between the attached reference index maps and the numbers on the Chemical & Geological Laboratories Ltd. reports. The identifications are made with respect to permit number, area number and hole number on each permit.

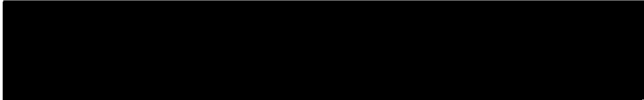
In accordance with your instructions we have drilled only the one hole on each permit to a depth in each case of eight feet. Furthermore, you will also observe that the samples are taken from the bottom of each eight-foot hole.

Although these analyses do not indicate that the shows of native sulphur are sufficiently significant to guarantee their economic value, it may be that other samples above those taken may be different. I assume, therefore, that you may wish to have other analyses made and then draw your own conclusions. If, on the other hand, you wish us to do this for you, we shall be pleased to oblige.

We return to you herewith the samples taken, in the supposition that you may wish to have additional analyses made.

In the hope that this summary report will serve your present purpose and with thanks for allowing us to serve you in this matter, I remain,

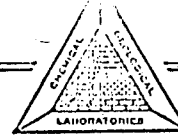
Yours very truly,



J.C. Sproule, P. Geol.

JCS/lh
Encls.

- Appendix I - Chemical and Geological Laboratories Ltd.
Laboratory Report Number C68-4119
- Appendix II - Index Map of Permits 165, 166, 169, 173 and 174
- Appendix III - Permit No. 165, showing location of test hole.
- Appendix IV - Permit No. 166, showing location of test hole.
- Appendix V - Permit No. 169, showing location of test hole.
- Appendix VI - Permit No. 173, showing location of test hole.
- Appendix VII - Permit No. 174, showing location of test hole.



Date Reported: October 7, 1968

Laboratory Report Number: C68-4119

J. C. SPROULE & ASSOCIATES LTD.

Kind of Sample: Soil

Date Received: September 30, 1968

SAMPLE NUMBER	DEPTH IN FEET	ELEMENTAL SULFUR	
		(% by Weight on Dry Sample)	(% by Weight on Wet Sample)
165-5-1	8	17.68	4.38
166-6-1	8	Trace	Trace
¹⁶⁹ 167-8-1	8	6.19	1.24
173-7-1	8	Trace	Trace
174-7-1	8	Trace	Trace

TUESDAY, SEPTEMBER 3

Permit No. 165 - Peyto Oils

Definitely located. Drilled hole in wet muskeg east of lake and southeast of 2 small lakes to northeast, surrounded by spruce

Hole No. 1 S.W. 10-118-5 W. 5 M. Went easily to 8 feet with bottom of decaying vegetation not reached. Two samples 4' and 8'.

TUESDAY, SEPTEMBER 3 (Con't)

Permit No. 166 - Peyto Oils

Located lakes in Sec. 10-116-6. Drilled hole in very wet muskeg at east end of largest lake.

Hole No. 1. S.E. 10-116-6 W. 5 M. ^By hand to 8 feet. Top of clay at 7' to 7 1/2 feet. Two samples 4' and 8'.

TUESDAY, SEPTEMBER 3 (Con't)

Permit No. 173 - Peyto Oils

Definitely located. Drilled hole in fairly wet narrow muskeg surrounded by small spruce.

Hole No. 1 S.E. 12-117-7. Went to 8 feet by hand. Clay below 3 feet (black muck then grey clay). Felt like gravel at 7 feet but none recovered. Two samples 4' and 8'.

TUESDAY, SEPTEMBER 3 (Con't)

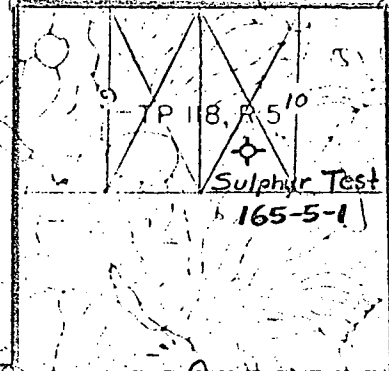
Permit No. 169 - Peyto Oils

✓ S. 1/2 1-117-8. Drilled hole in wet muskeg surrounded by spruce. Auger went to 8 feet, bottom not reached. Decayed vegetation. S.W. 1/4 1-117-8 W. 5 M. Two samples 4' and 8'.

Permit No. 174 - Peyto Oils

Hole No. 1. N.W. 31-115-7 W. 5 M. Wet muskeg on west side of lake. Rx Clutch out of motor, rope jammed. Drilled by hand. Three holes. Gravel at 3 feet to 4 feet in 1st 2 holes, 3rd on edge of lake in deep muskeg went to 8 feet. Grey clay below gravel. Two samples 4' and 8'.

TP 118, R-6

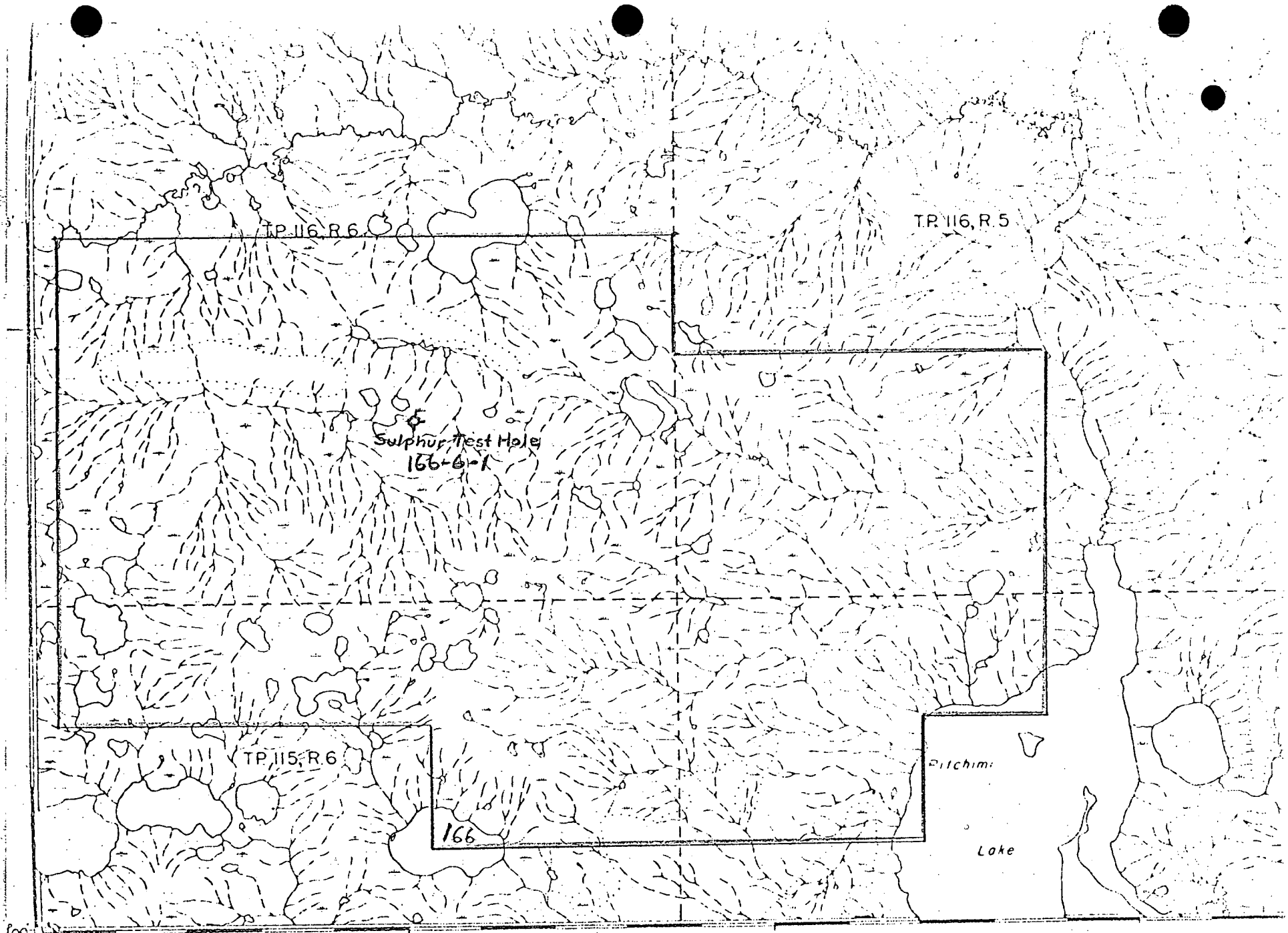


Sulphur Test Hole
165-5-1

TP 117, R-6

TP 117, R-5

165



TP 116, R 6

TP 116, R 5

Sulphur Test Hole
166-6-1

TP 115, R 6

166

Pitchim

Lake

100'
115°00'

55°

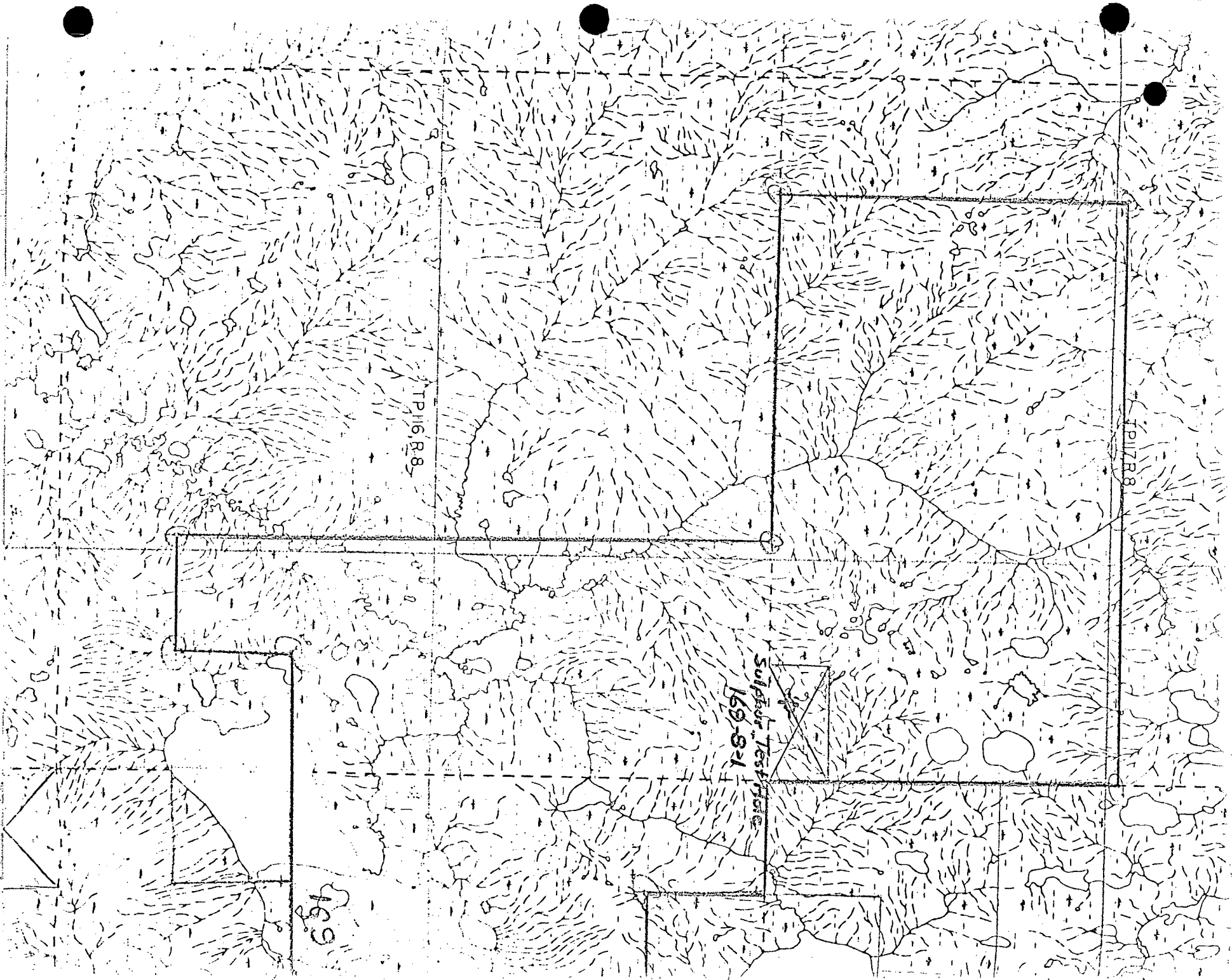
GEOLOGISTS DISCRETION

50°

45'

19680131 Permit No. 166

REFERENCE

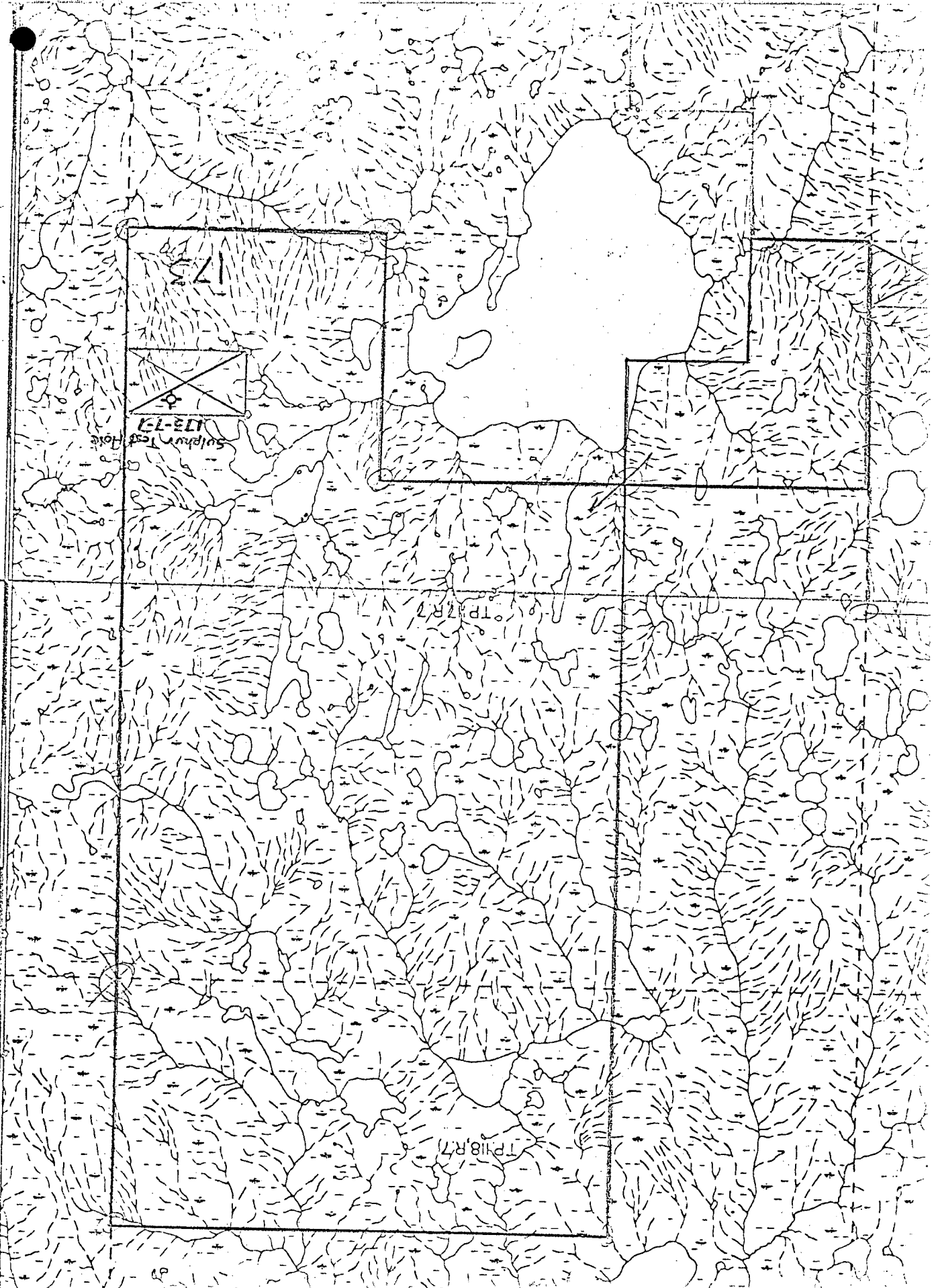


TP116, R.8

TP17, R.8

Superior Testiforme
169-9-1

169

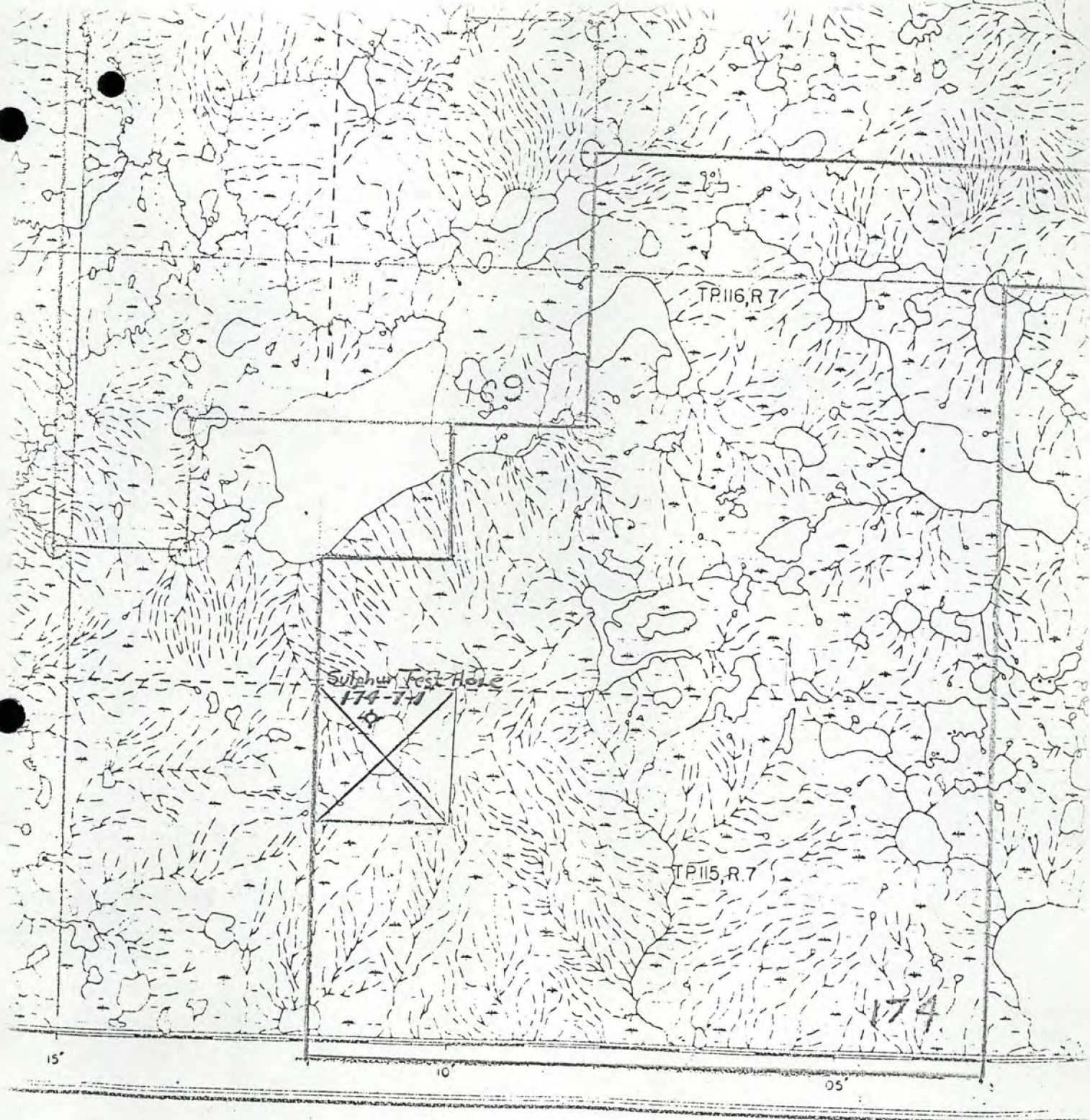


Sulphur Test Hole
173-17

TP17R7

TP18R7

10



FIFTH MERCIDIAN
BERTA

5 MILES

REFERENCE

OIL PIPE LINE	— · — · — · — · — · — · — · — ·
GAS PIPE LINE	— · — · — · — · — · — · — · — ·
PERMANENT LAKE	— · — · — · — · — · — · — · — ·
INTERMITTENT LAKE & STREAM	— · — · — · — · — · — · — · — ·
HIGH WATER MARK	— · — · — · — · — · — · — · — ·
DITCH	— · — · — · — · — · — · — · — ·
SAND OR MUD	— · — · — · — · — · — · — · — ·
SWAMP	— · — · — · — · — · — · — · — ·

116	115
3	14
12	
5	
4	

Poor Quality
Original